



Qty	Piece	Finishing			
1	WALL CUP	MAT GREEN - PANTONE 5635U	1	Switch cap	MAT GREEN - PANTONE 5635U
1	WASHER	MAT GREEN - PANTONE 5635U	1	Switch	SATIN BK11
1	BALL JOINT	MAT GREEN - PANTONE 5635U			
1	TUBE	MAT GREEN - PANTONE 5635U			
1	BALL JOINT	MAT GREEN - PANTONE 5635U / NICKELED N8			
1	CURVED WASHER	SATIN BK11			
1	SHADE	SATIN BK11 OUTSIDE / MAT WHITE INSIDE			
1	JUNCTION PIECE	MAT WHITE			
1	JUNCTION PIECE 2	MAT WHITE			
1	COVER CUP	MAT WHITE			
4	M10X4 NUT				
1	BULBHOLDER				
1	THREAD				
2	M4 PLASTIC SCREW				

dcw.

Name : **BS5 SW – GR–BL**

Matériaux :

Part : **Finishings**

Date :

Rev : 2

Details : E14 - ESL 11W



Qty	Piece	Finishing			
1	WALL CUP	MAT BLACK	1	Switch cap	MAT BLACK
1	WASHER	MAT BLACK	1	Switch	BLACK
1	BALL JOINT	MAT BLACK			
1	TUBE	MAT BLACK			
1	BALL JOINT	MAT BLACK / NICKELED N8			
1	CURVED WASHER	MAT BLACK			
1	SHADE	MAT BLACK OUTSIDE / MAT WHITE INSIDE			
1	JUNCTION PIECE	MAT WHITE			
1	JUNCTION PIECE 2	MAT WHITE			
1	COVER CUP	MAT WHITE			
4	M10X4 NUT				
1	BULBHOLDER				
1	THREAD				
2	M4 PLASTIC SCREW				

dcw.

Name : **BS5 SW – BL**

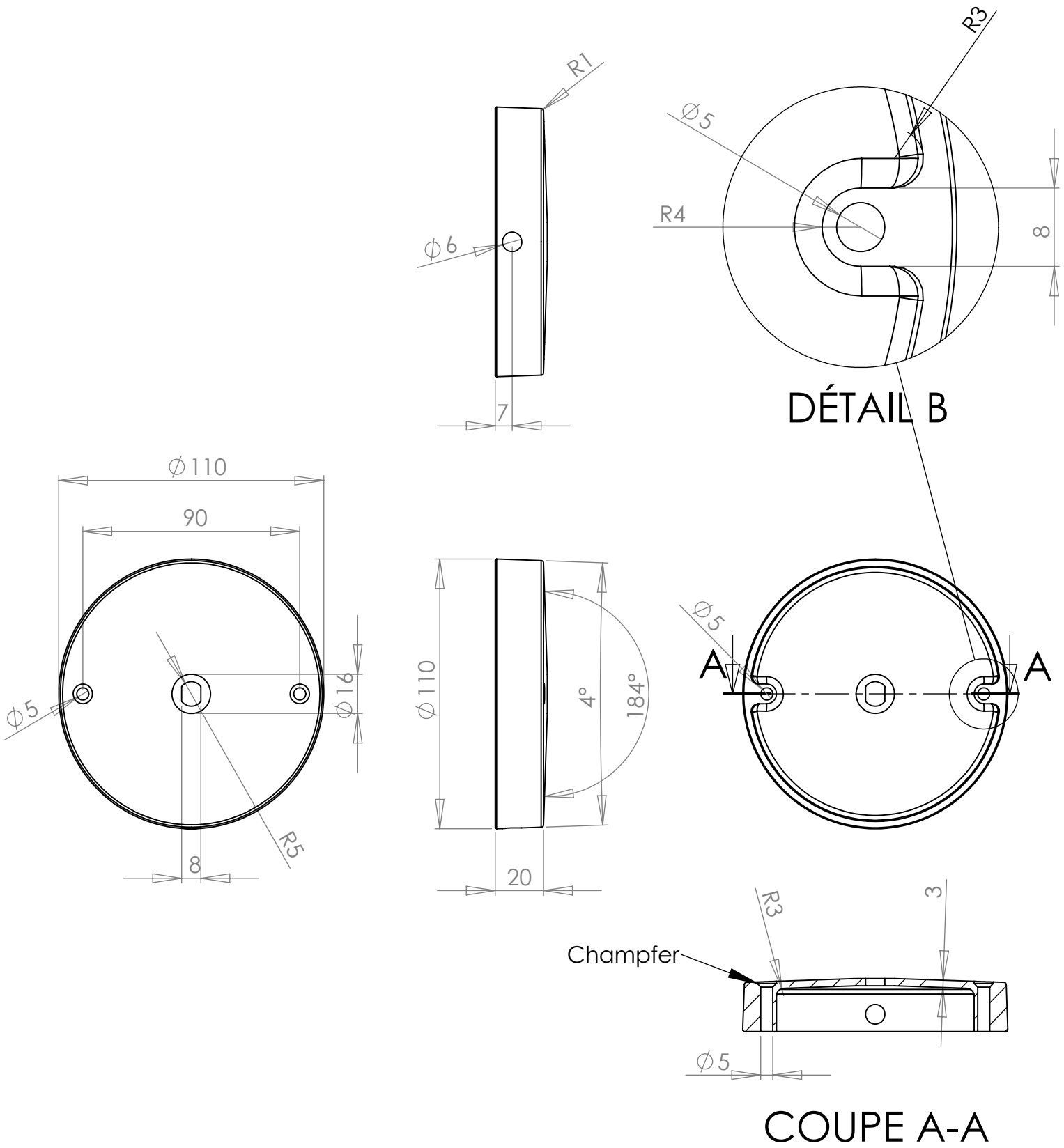
Matériaux :

Part : **Finishings**

Date :

Rev : 2

Details : E14 - ESL 11W



dcw.

Name : BS5 WALL LAMP

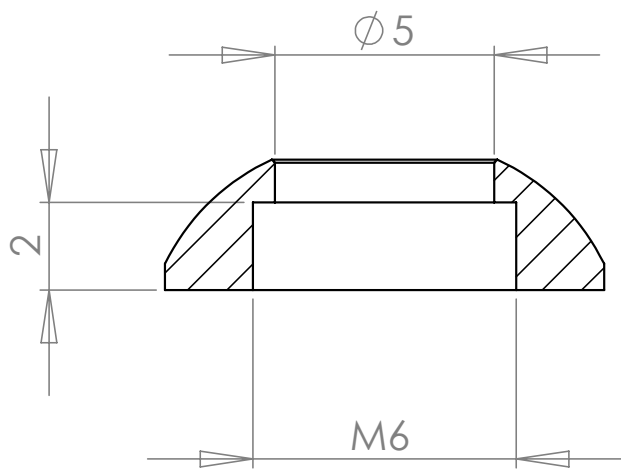
Materials : Painted steel

Part : Wall Cup

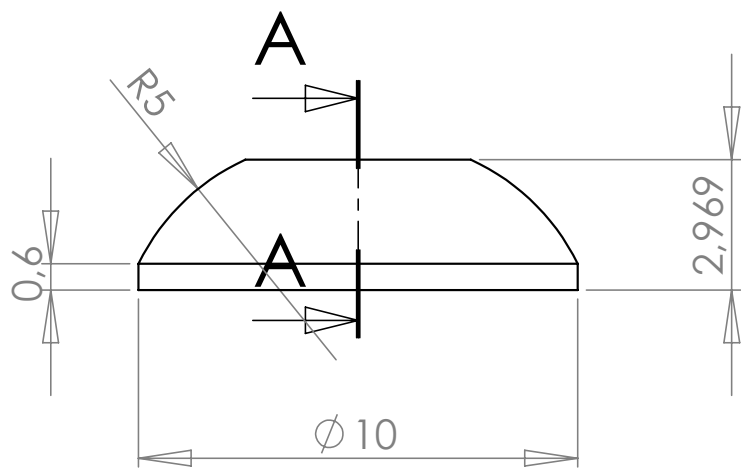
Date :

Rev : 1

Details : E14 - ESL 11W



COUPE A-A



dcw.

Name : BS5 WALL LAMP

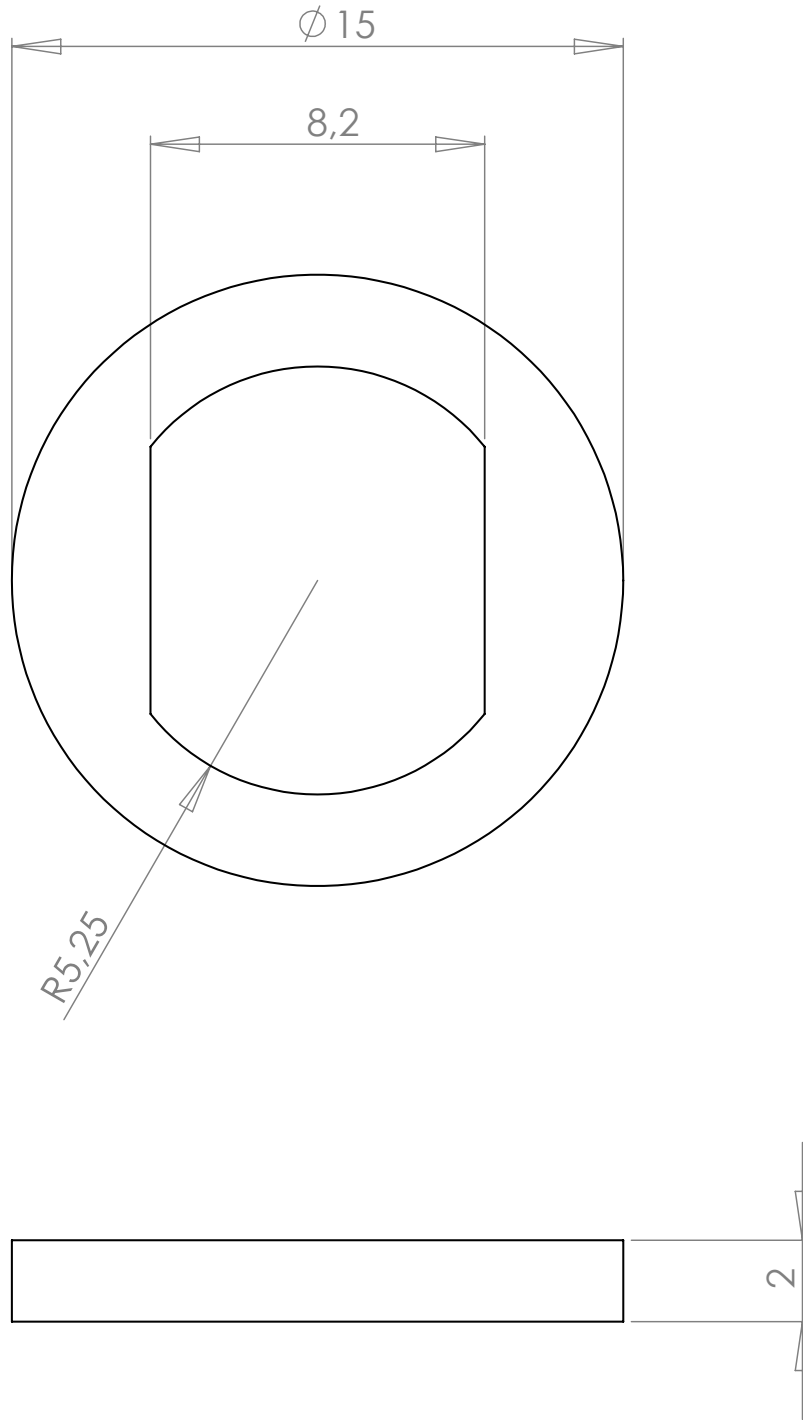
Matériaux : Painted steel

Part : Switch cap

Date :

Rev : 1

Details : E14 - ESL 11W



dcw.

Name : **BS RANGE**

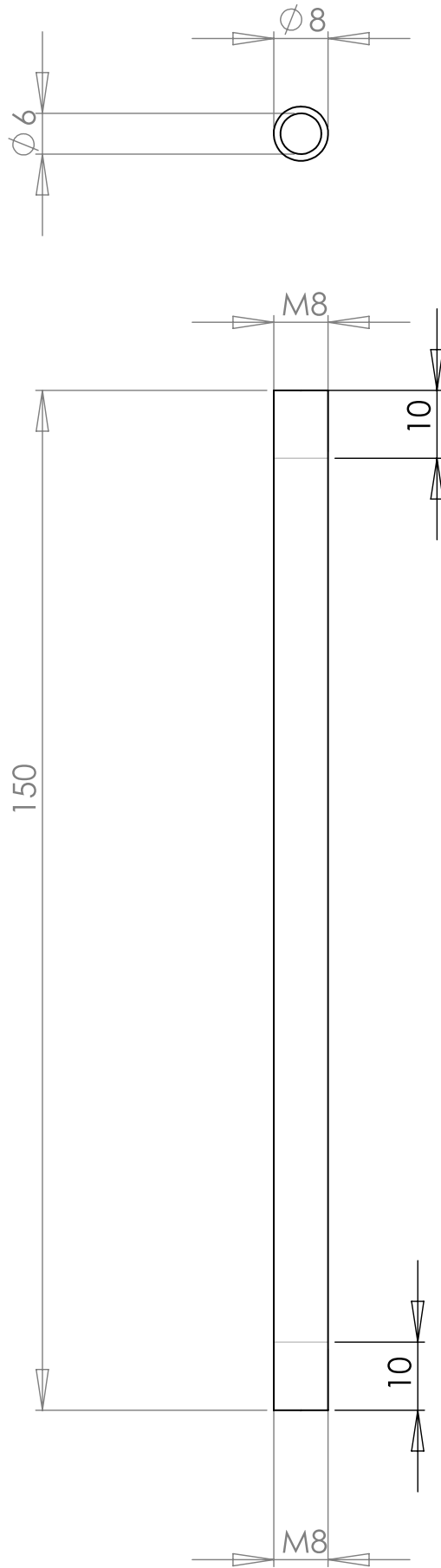
Materials : PAINTED STEEL

Part : **WASHER**

Date :

Rev : 2

Details :



dcw.

Name : **BS5 WALL LAMP**

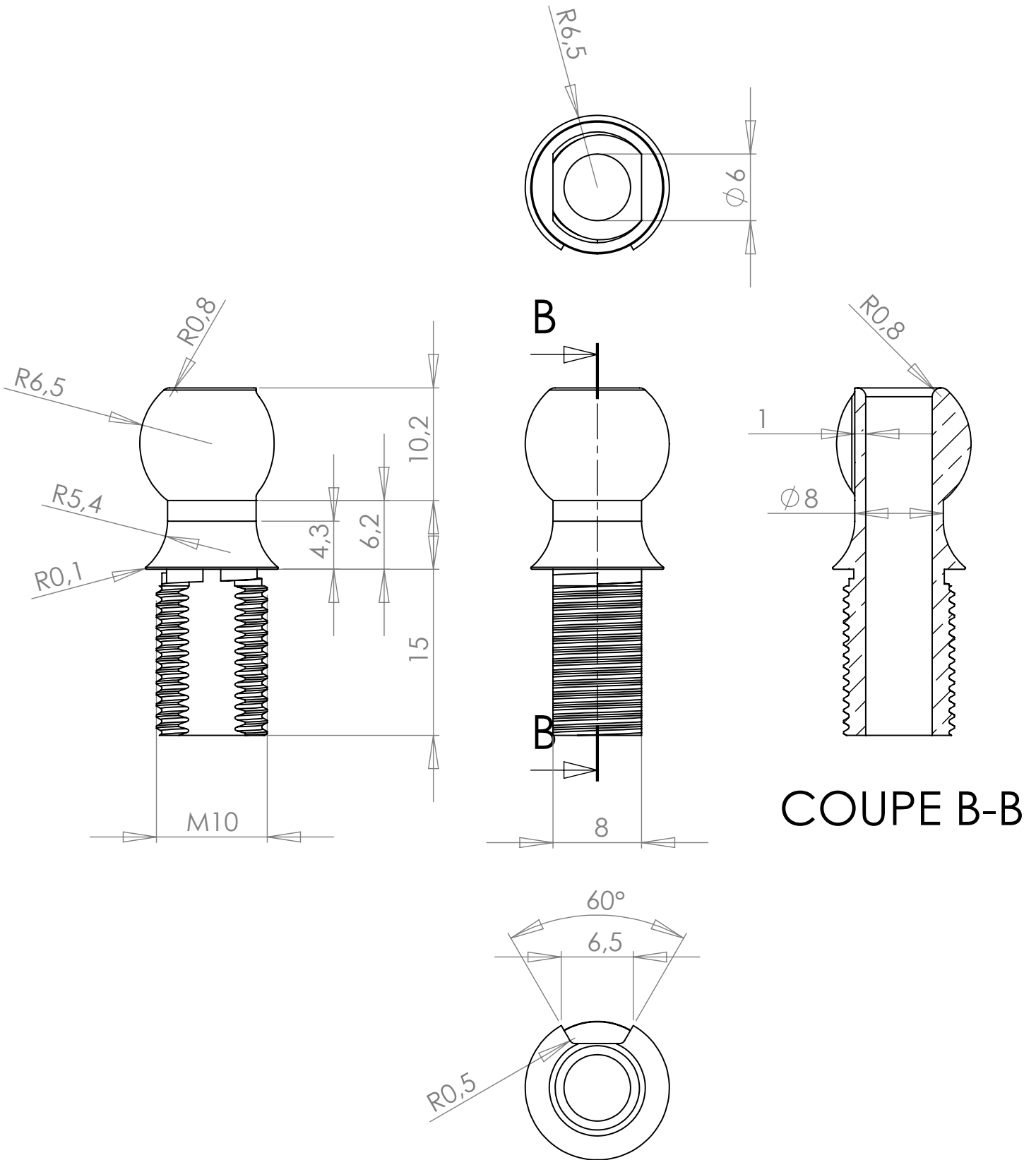
Materials : Painted steel

Part : **Tube**

Date :

Rev : 1

Details : E14 - ESL 11W



COUPE B-B

dcw.

Name : **BS RANGE**

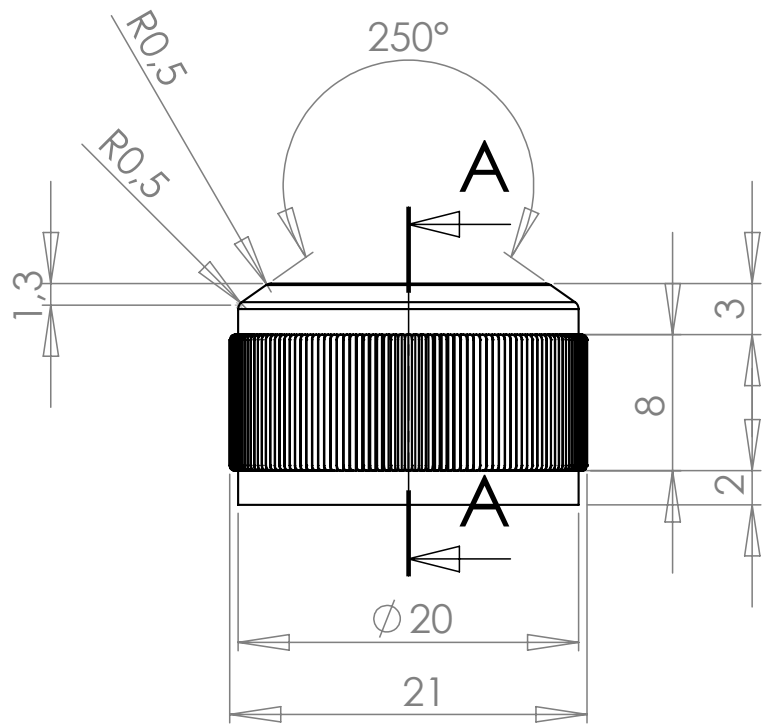
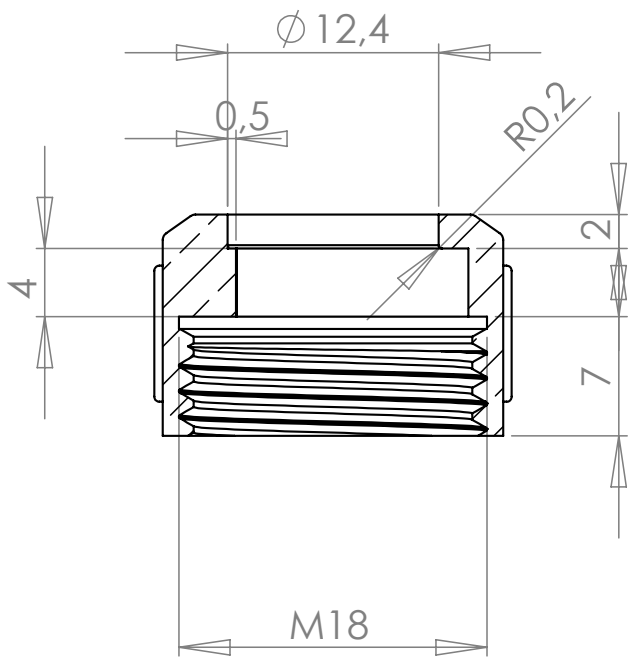
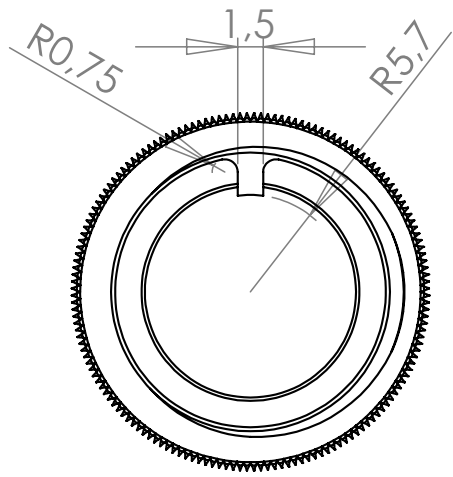
Materials : NICKEL PLATED BRASS

Part : **BALL JOINT – PART 5.2**

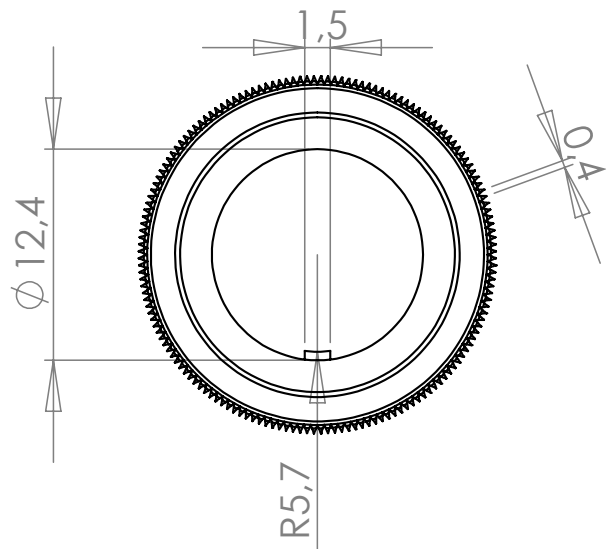
Date :

Rev : 1

Details :



COUPE A-A



dcw.

Name : **BS RANGE**

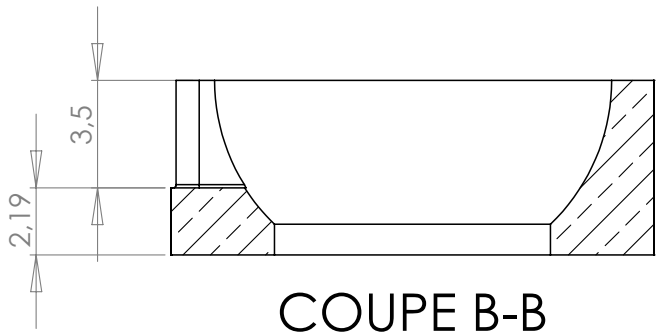
Materials : NICKEL PLATED BRASS

Part : **BALL JOINT – PART 4.2**

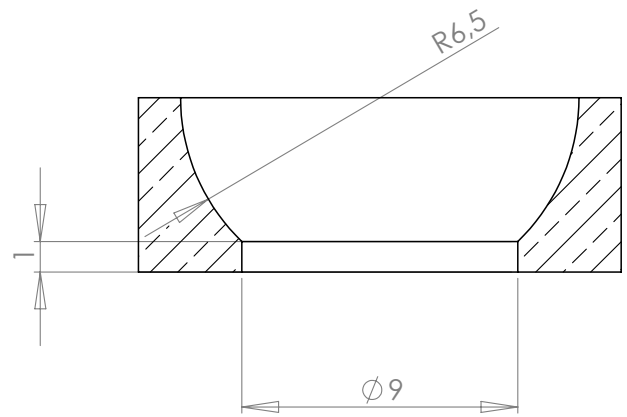
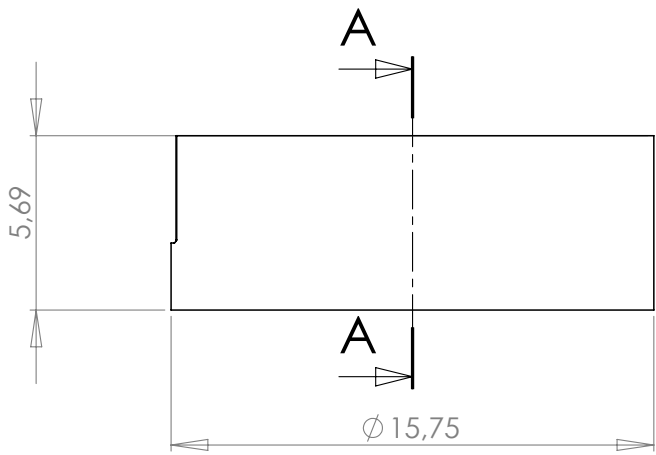
Date :

Rev : 1

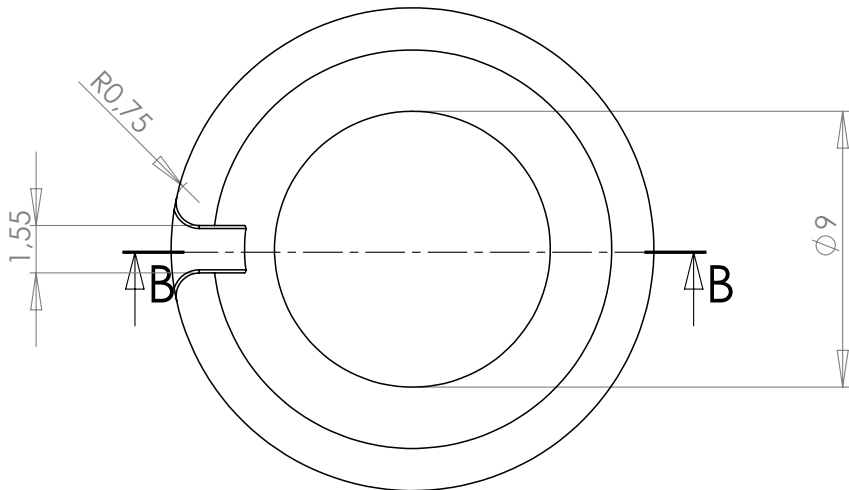
Details :



COUPE B-B



COUPE A-A



dcw.

Name : **BS RANGE**

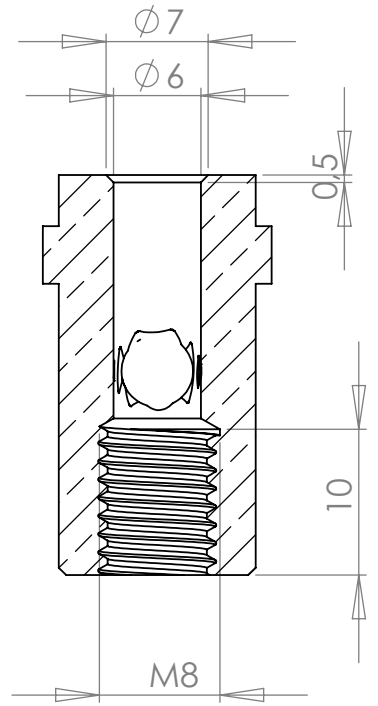
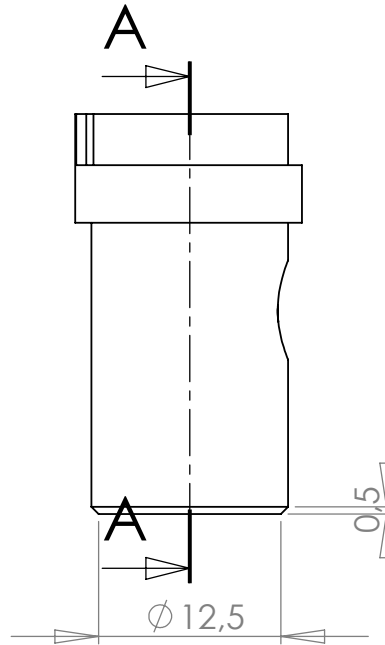
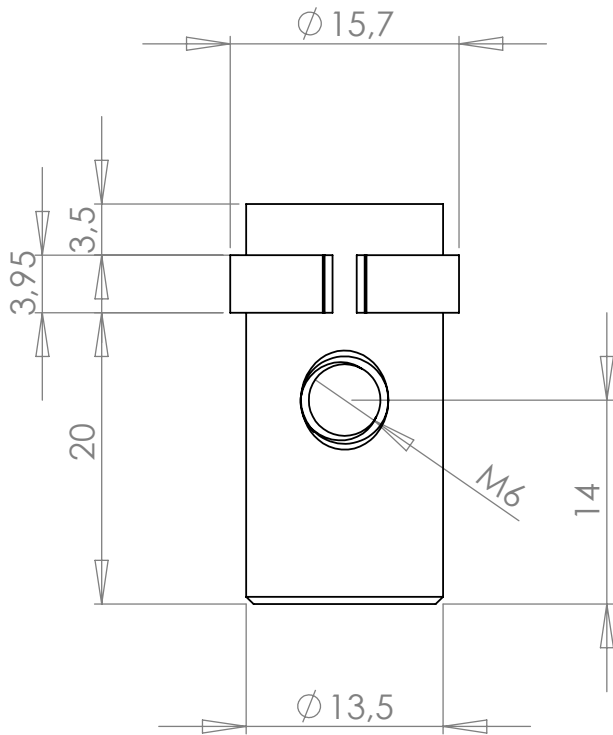
Matériaux : NICKEL PLATED BRASS

Part : **BALL JOINT – PART 3.2**

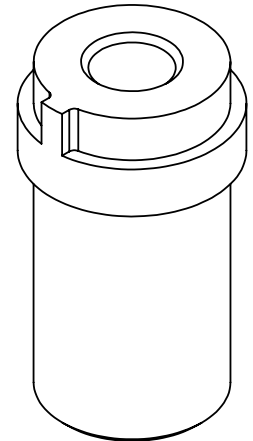
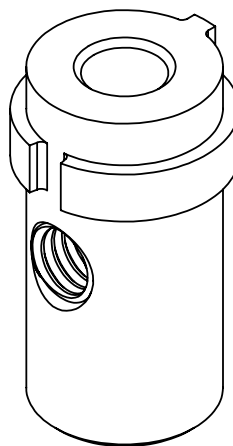
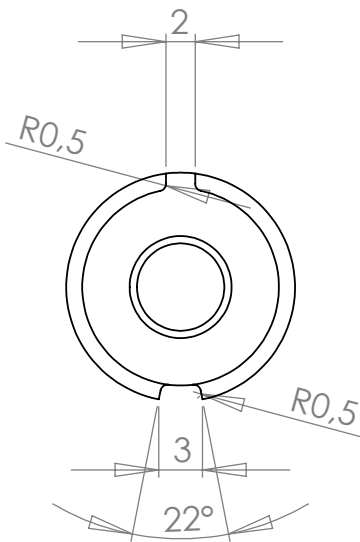
Date :

Rev : 1

Details :



COUPE A-A



dcw.

Name : **BS RANGE**

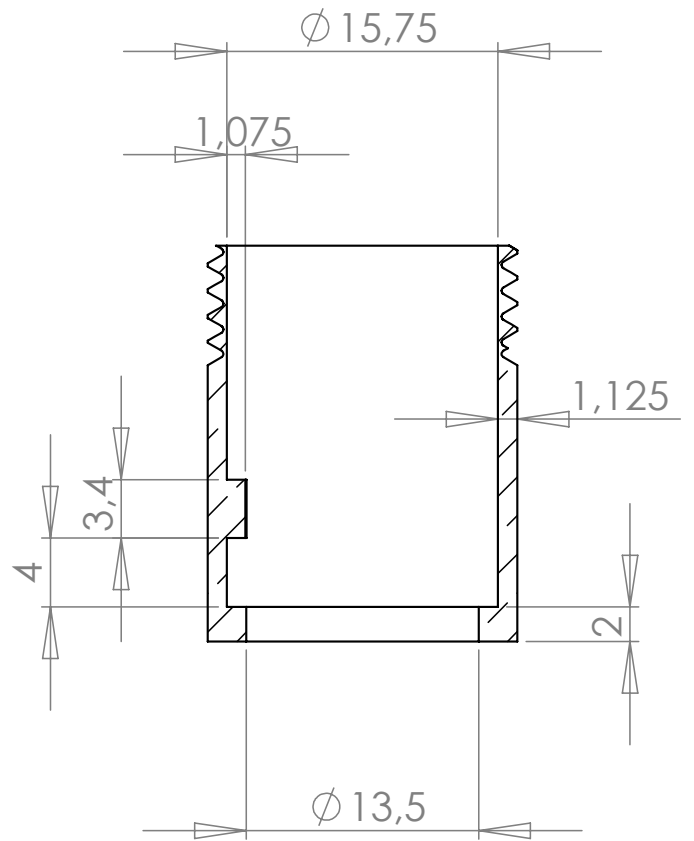
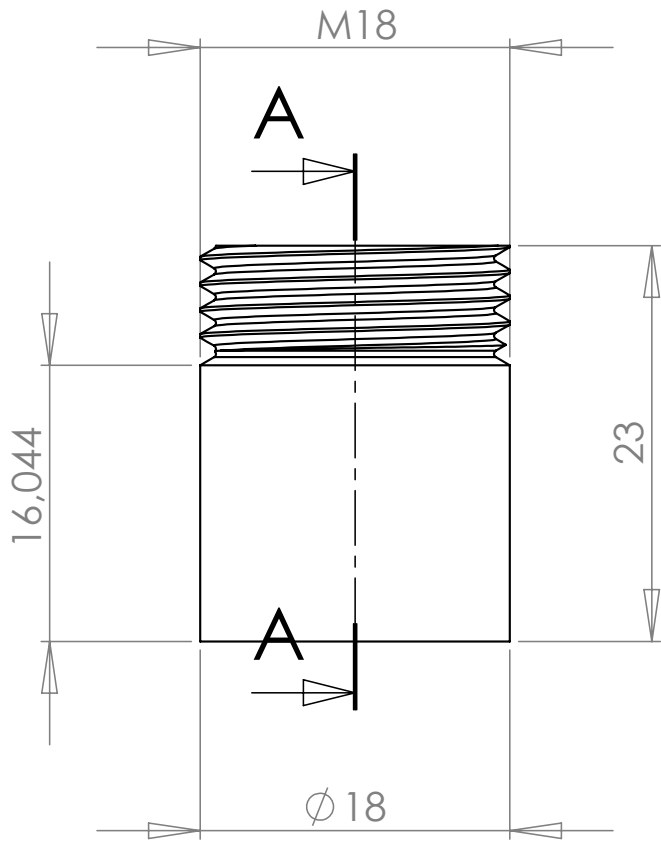
Materials : NICKEL PLATED BRASS

Part : **BALL JOINT – PART 2**

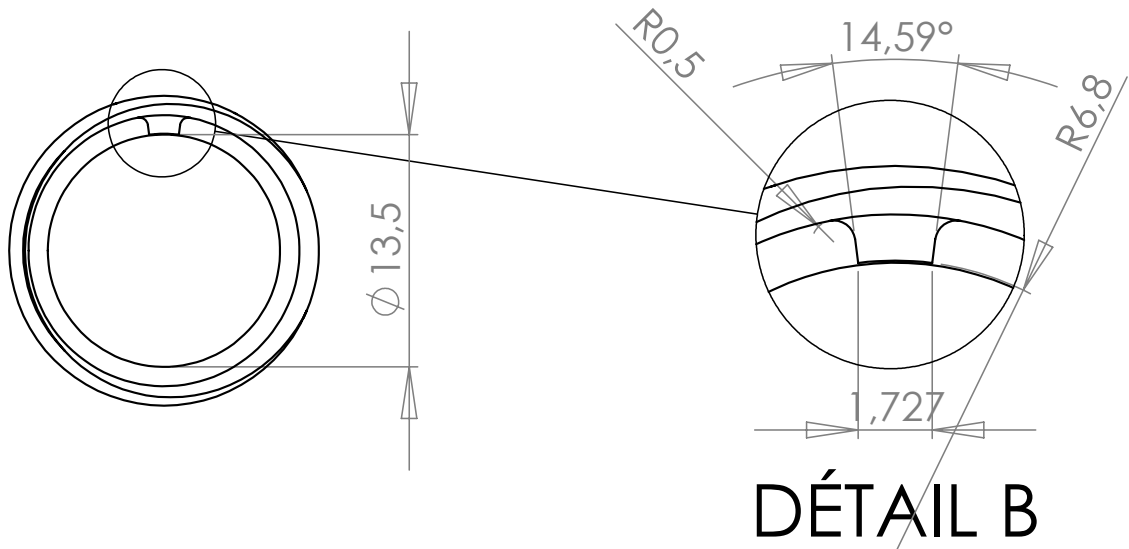
Date :

Rev : 1

Details :



COUPE A-A



DÉTAIL B

dcw.

Name : **BS RANGE**

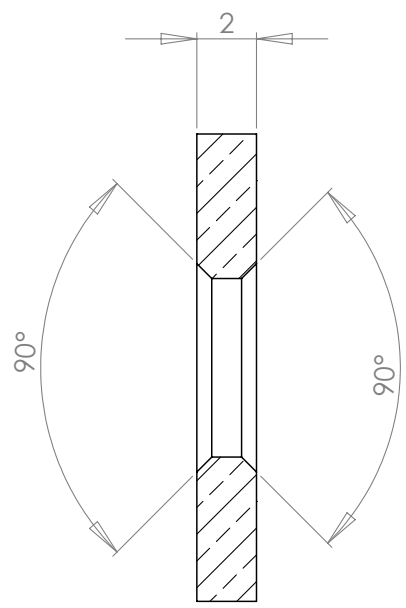
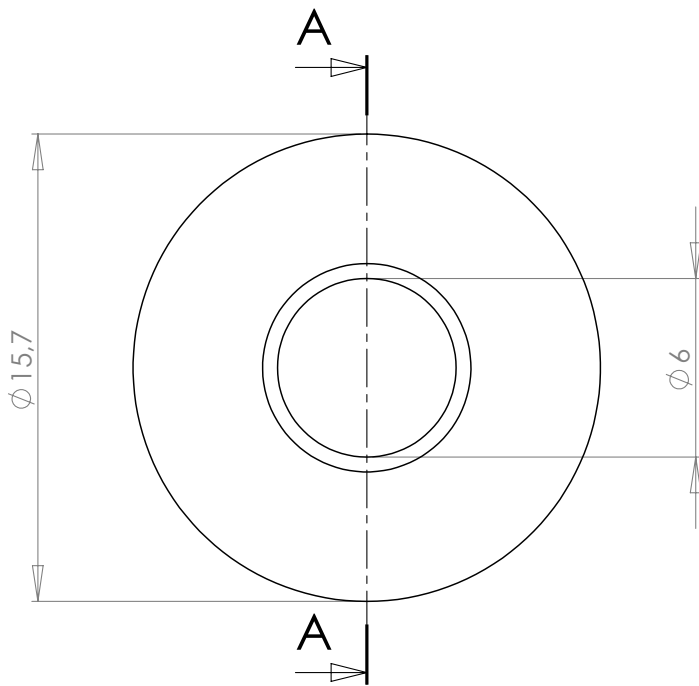
Materials : NICKEL PLATED BRASS

Part : **BALL JOINT – PART 1**

Date :

Rev : 1

Details :



COUPE A-A

dcw.

Name : **BS RANGE**

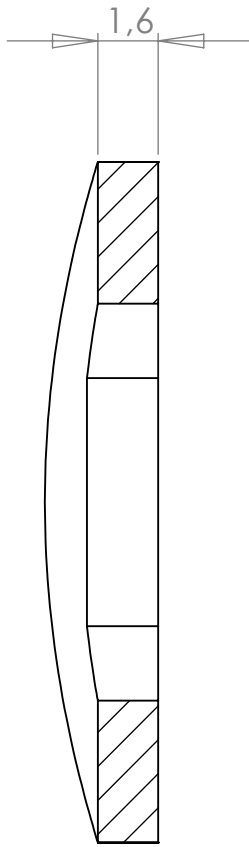
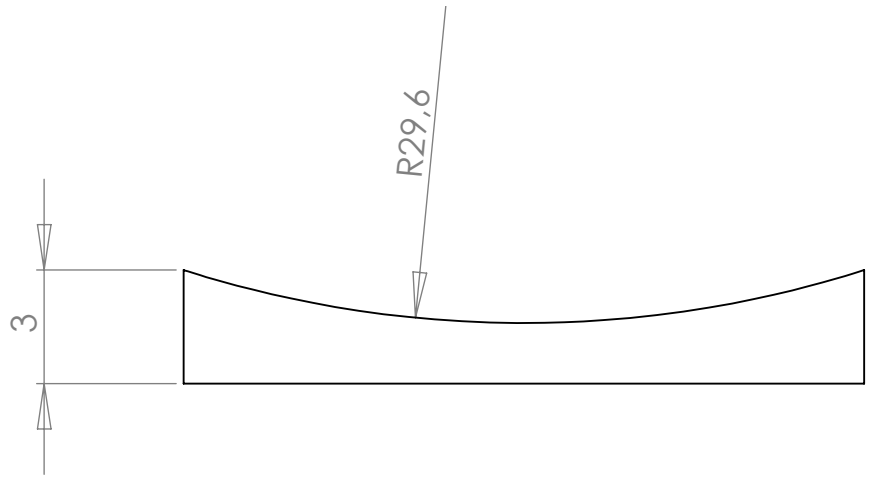
Matériaux : NICKEL PLATED BRASS

Part : **BALL JOINT – WASHER**

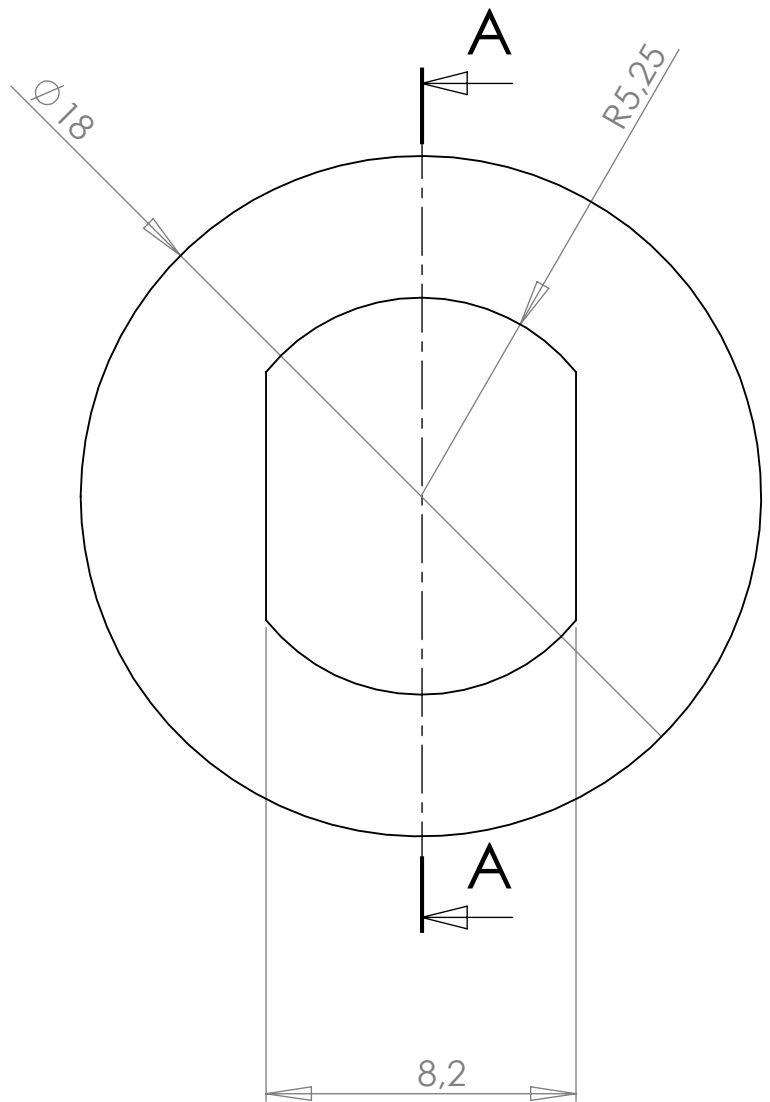
Date :

Rev : **1**

Details :



COUPE A-A



dcw.

Name : **BS RANGE**

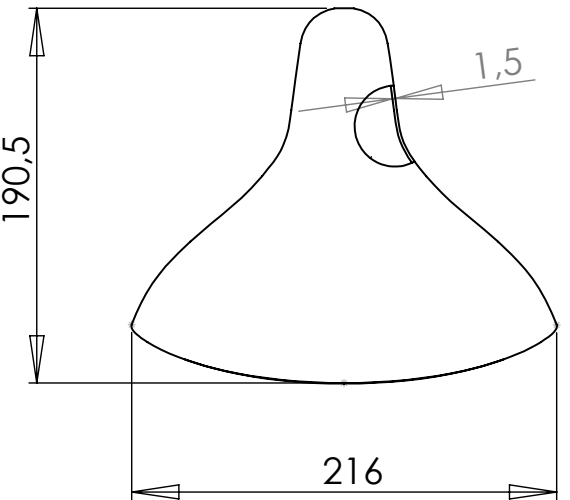
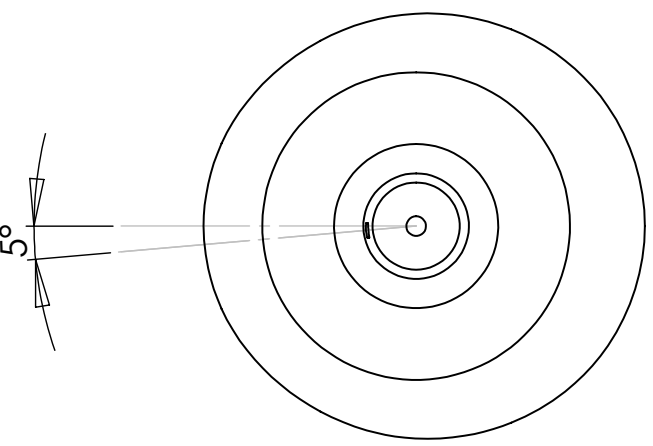
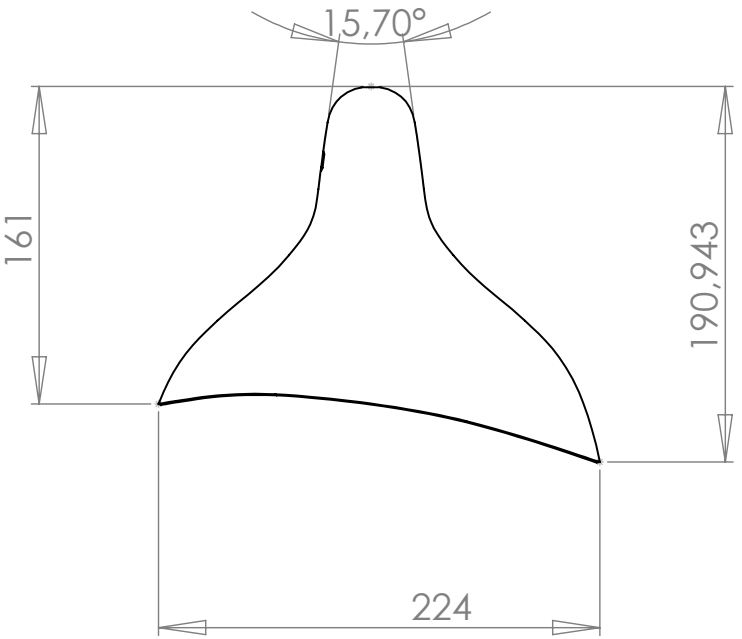
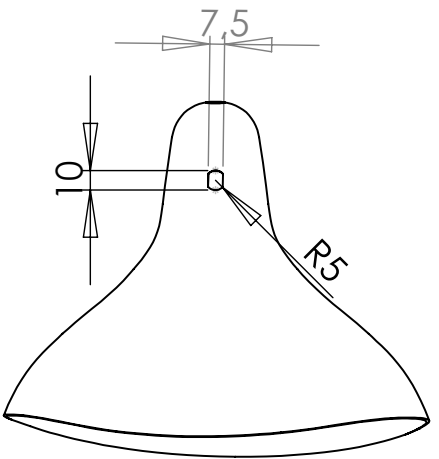
Materials : PAINTED STEEL

Part : **CURVED WASHER**

Date :

Rev : 2

Details :



dcw.

Name : BS – SMALL SHADE

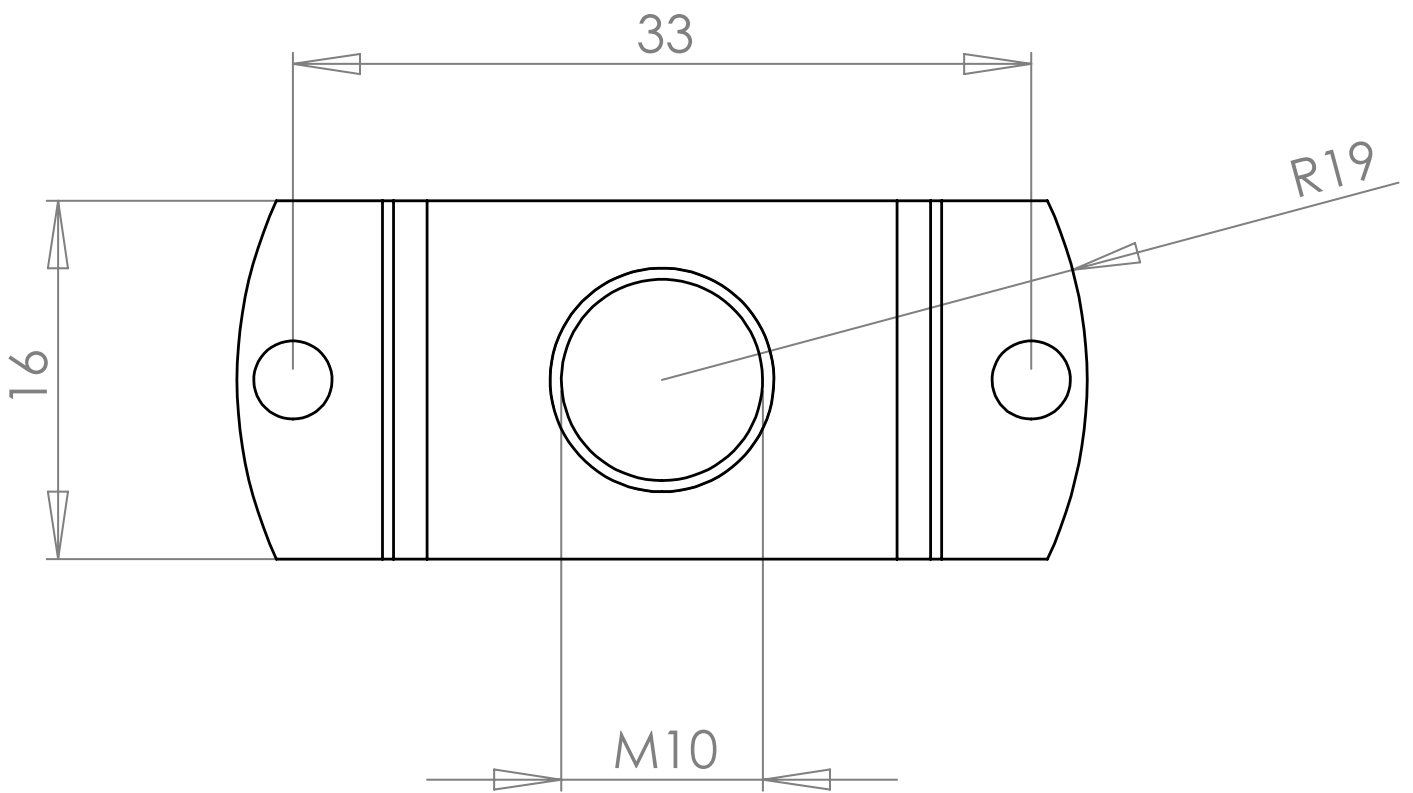
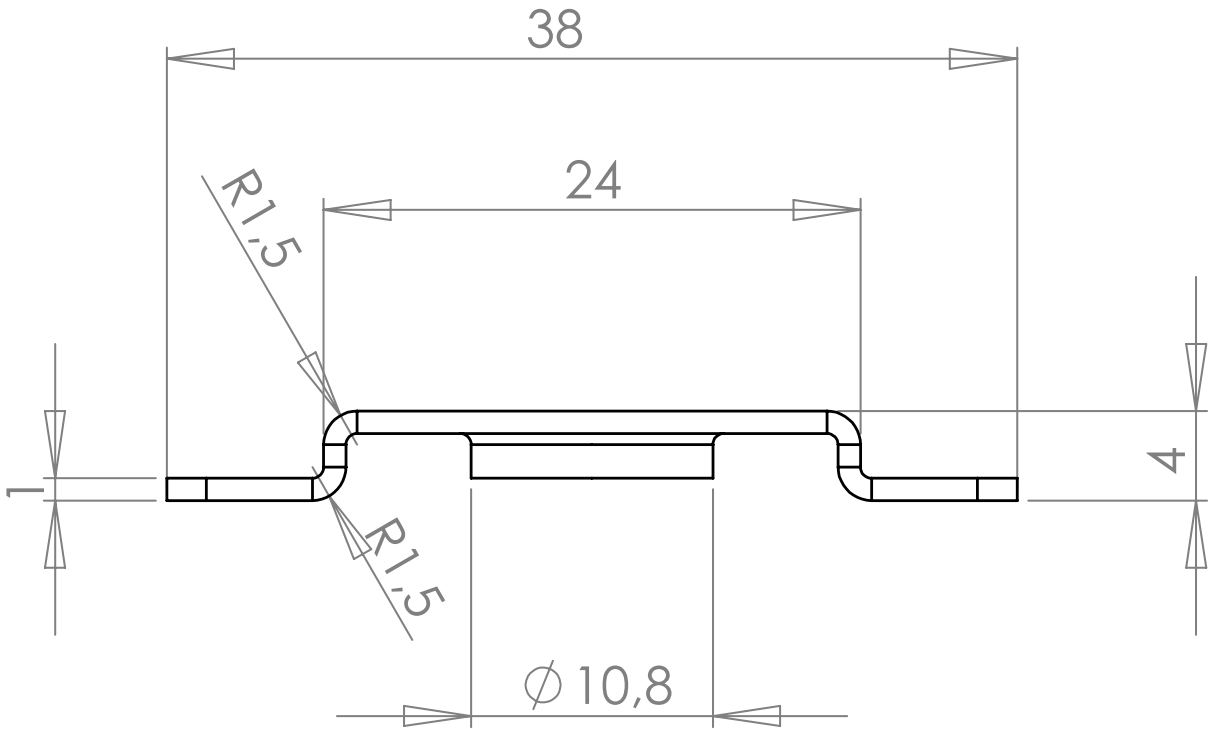
Materials : PAINTED ALUMINIUM

Part : SHADE

Date :

Rev : 3

Details :



dcw.

Name : **BS RANGE**

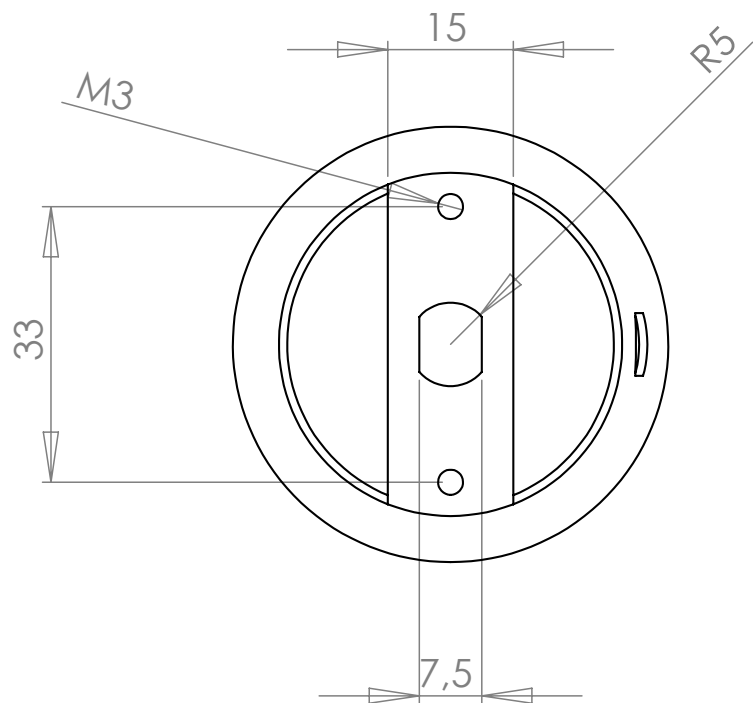
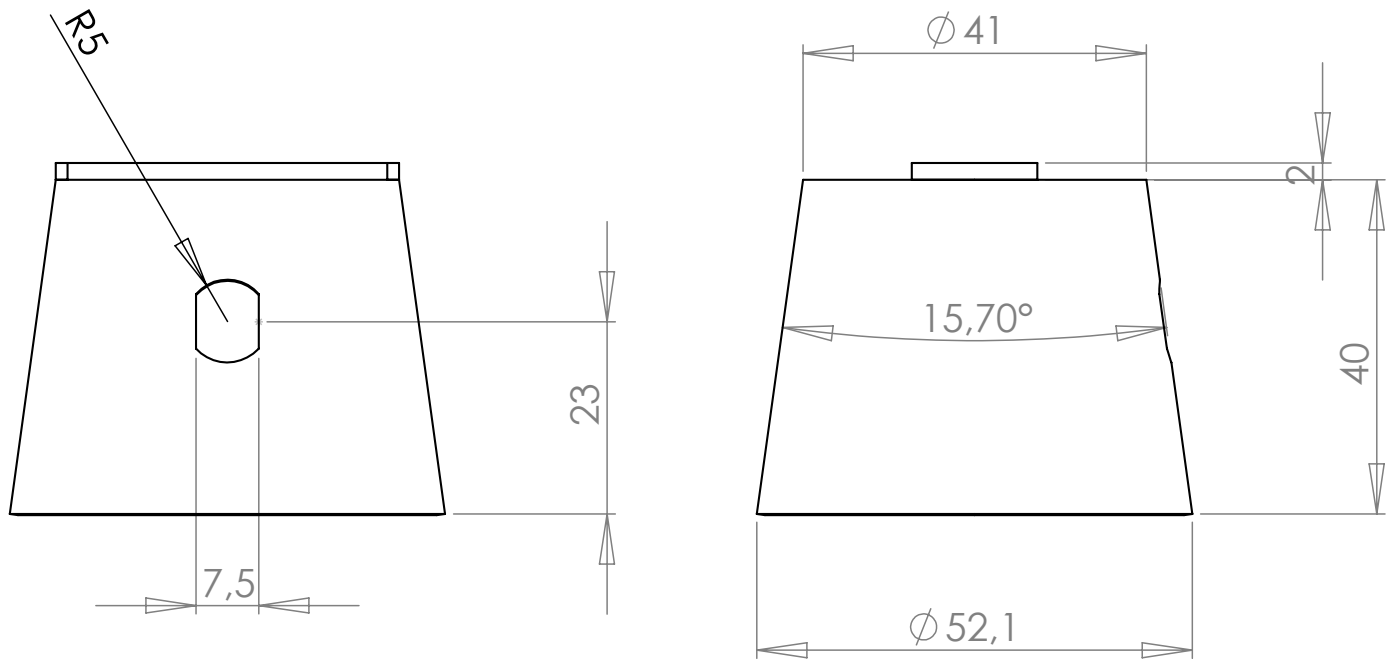
Materials : PAINTED STEEL

Part : **JUNCTION PIECE 2**

Date :

Rev : 2

Details :



dcw.

Name : **BS**

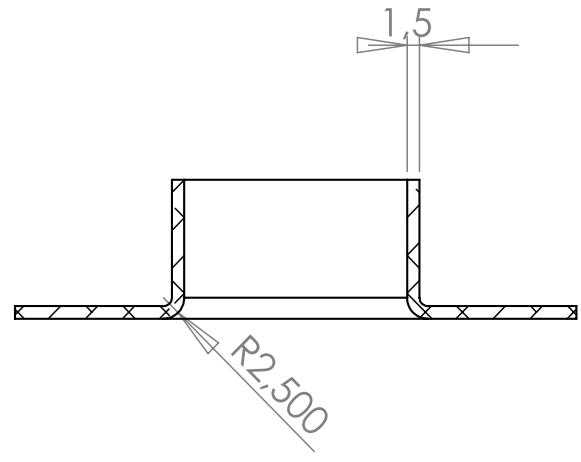
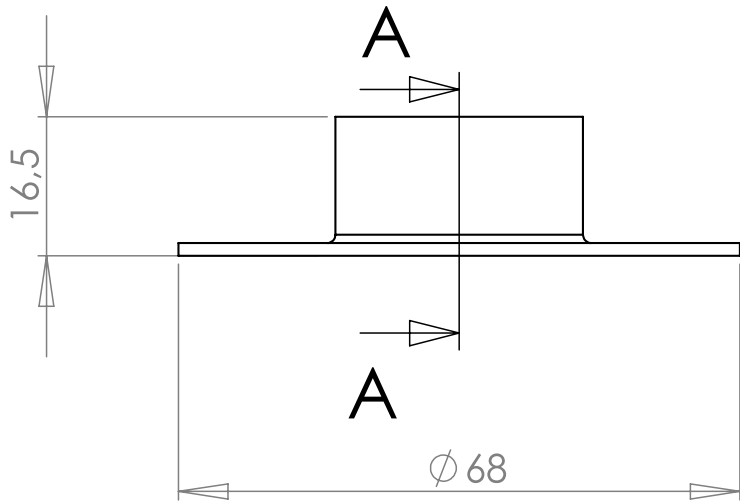
Materials : PAINTED STEEL

Part : **JUNCTION PIECE SMALL**

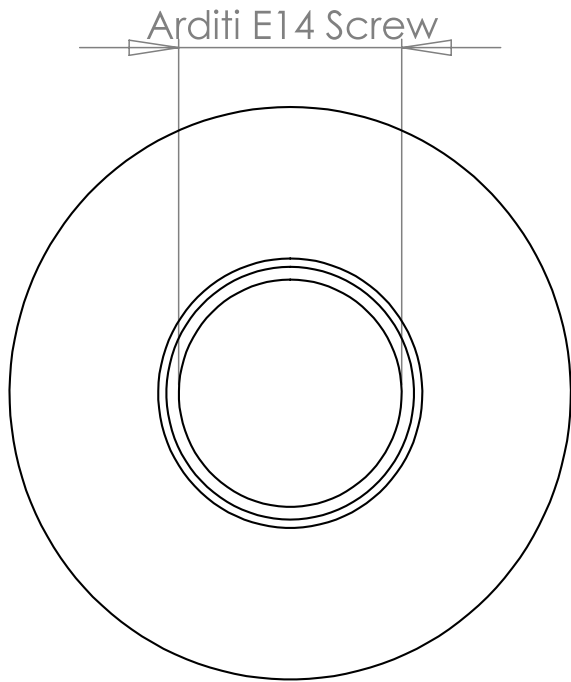
Date :

Rev : 2

Details :



COUPE A-A



dcw.

Name : **BS**

Matériaux : PAINTED STEEL

Part : **COVER CUP**

Date :

Rev : **2**

Details :