



Qty	Piece	Finishing			
1	WEIGHT	BLACK SATIN	1	JUNCTION PIECE	BLACK SATIN
1	WOOD PART	OAK	1	COVERING PIECE	BLACK SATIN
1	BASE	BLACK SATIN	1	FIXATION PIECE	BLACK SATIN
1	LOCKING PIECE	BLACK SATIN	1	SMALL CONIC SHADE	BLACK OUTSIDE / WHITE INSIDE
1	METAL WASHER		1	BULBHOLDER SPACER	CHROME
1	SPRING	CHROME	1	BULBHOLDER SCREW	CHROME
1	SPHERE	BLACK	1	BULBHOLDER	
1	RUBBER	BLACK	3	M5 SCREW	
1	TUBE 1	BLACK SATIN	1	M5 x 5 PLASTIC SCREW	BLACK
1	PLASTIC WASHER Ø40	RED		THREAD 10X100	
1	PLASTIC WAHSER Ø30	RED			
2	PLIERS	CHROME			
2	AXIS	CHROME			
1	TUBE 2	BLACK SATIN			

dcw.

Name : LAMP GRAS N°207 BL-SAT

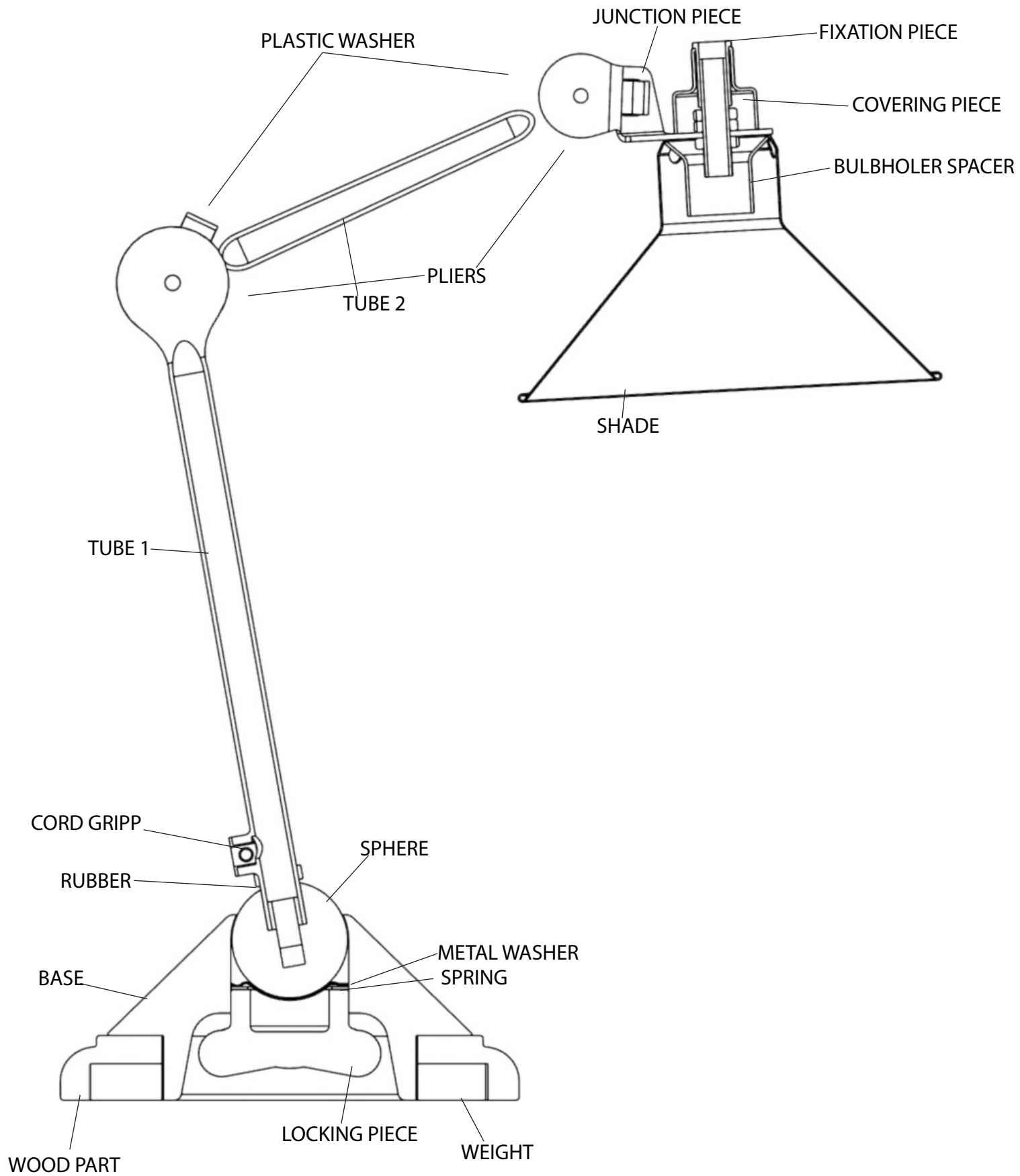
Matériaux :

Part :

Date : 15/03/2013

Rev : 2

Details : G9 - 40w ; Arditi métal bulbholder ; Black fabric wire



dcw.

Name : LAMP GRAS N°207

Materials :

Part : ELEMENTS

Date :

Rev : 2

Details : G9 - 40w ; Arditi métal bulbholder ; Black fabric wire

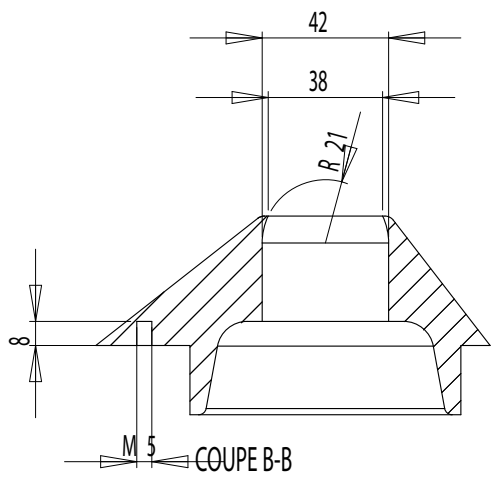
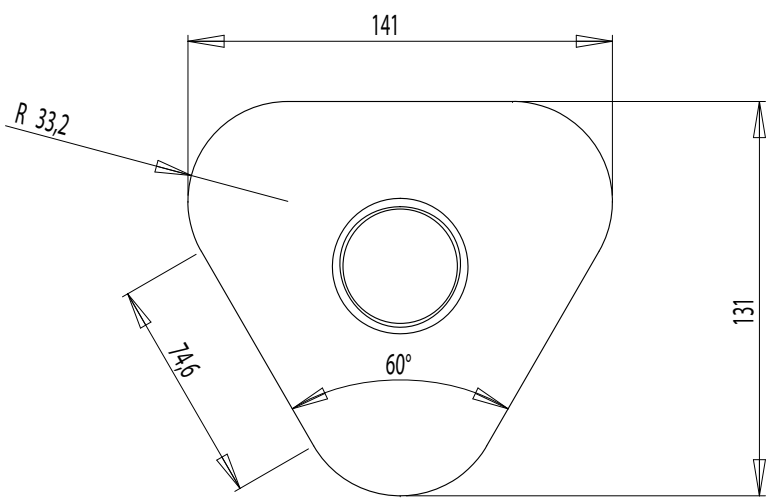
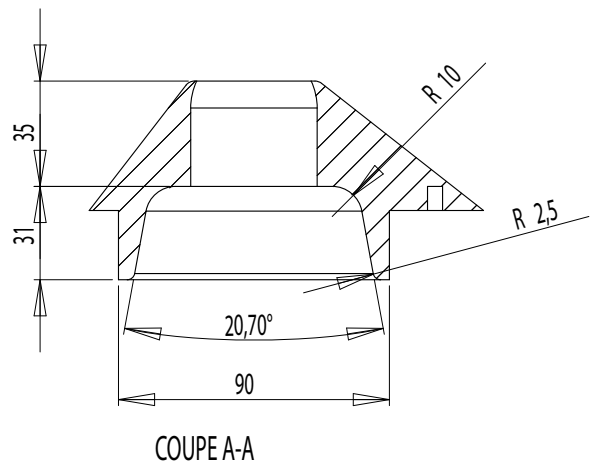
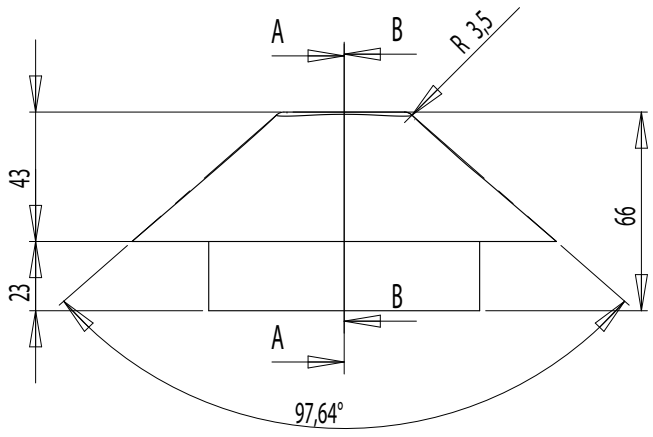
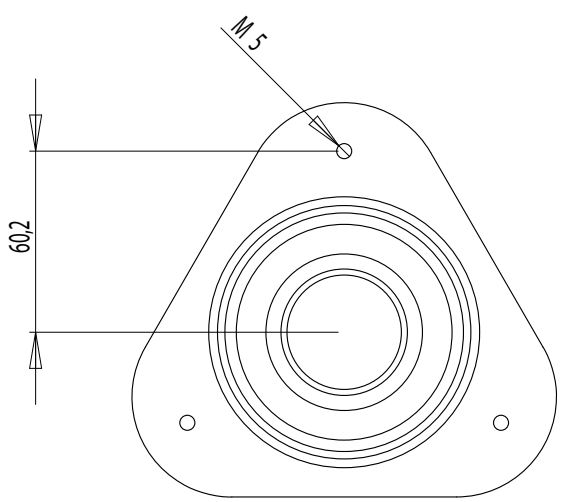
Name : LAMP GRAS N°207
Part : BASE
Date :

Rev : 2

Details :

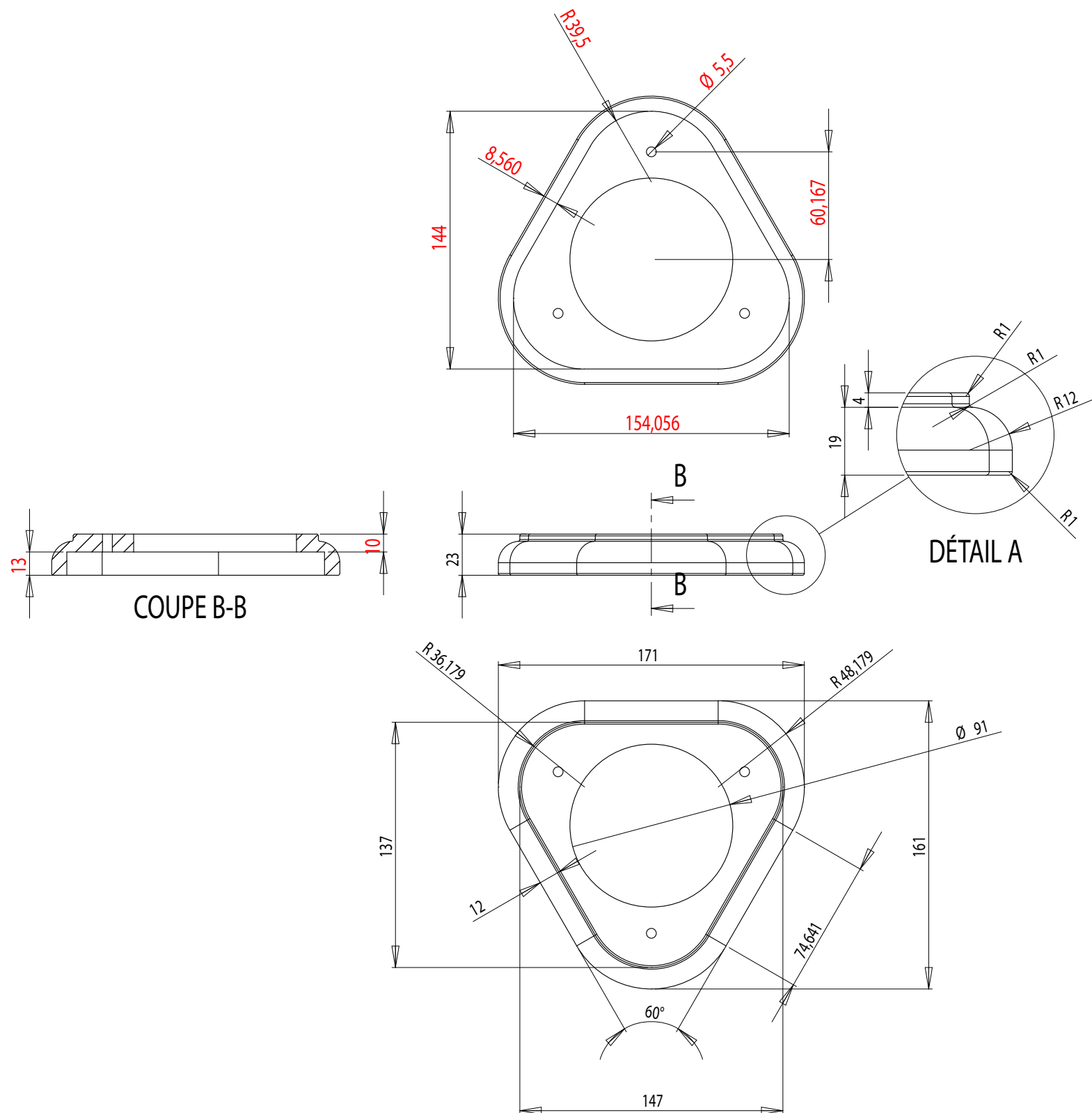
Materials : PAINTED/CHROMED STEEL CAST

dcw.



COUPE B-B

COUPE A-A



dcw.

Name : LAMP GRAS N°207

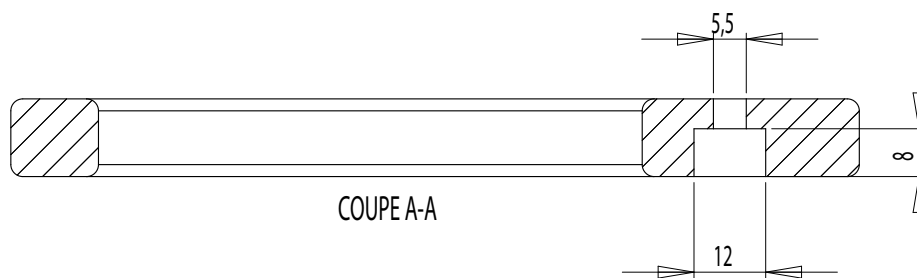
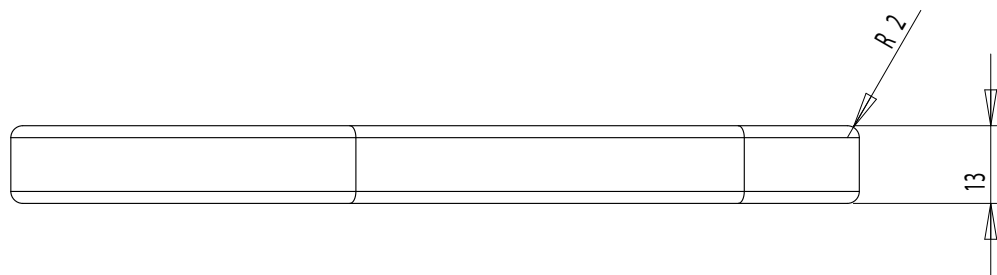
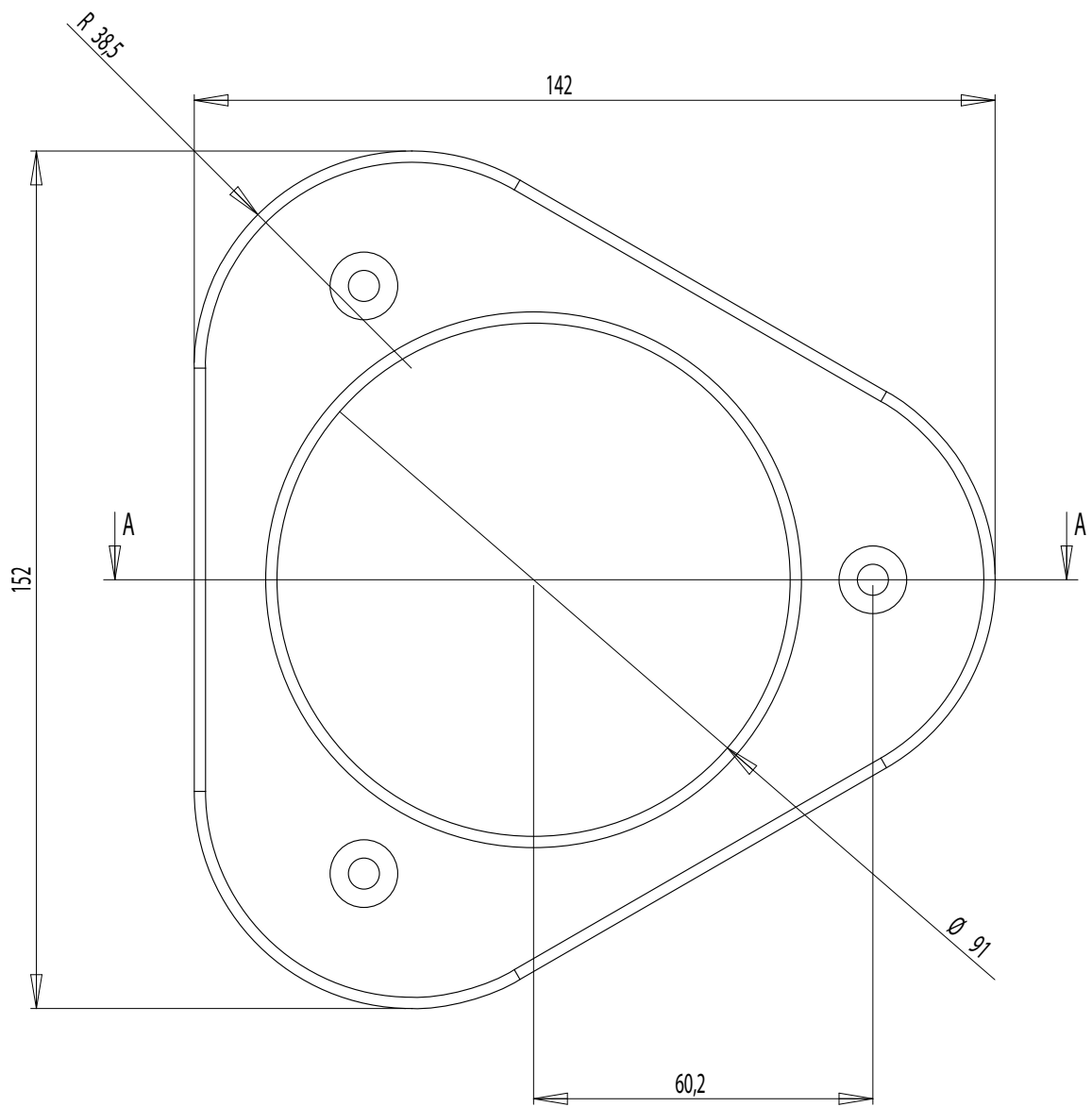
Materials : OAK WOOD - MAT VARNISH

Part : WOOD BASE

Date :

Rev : 2

Details :



dcw.

Name : LAMP GRAS N°207

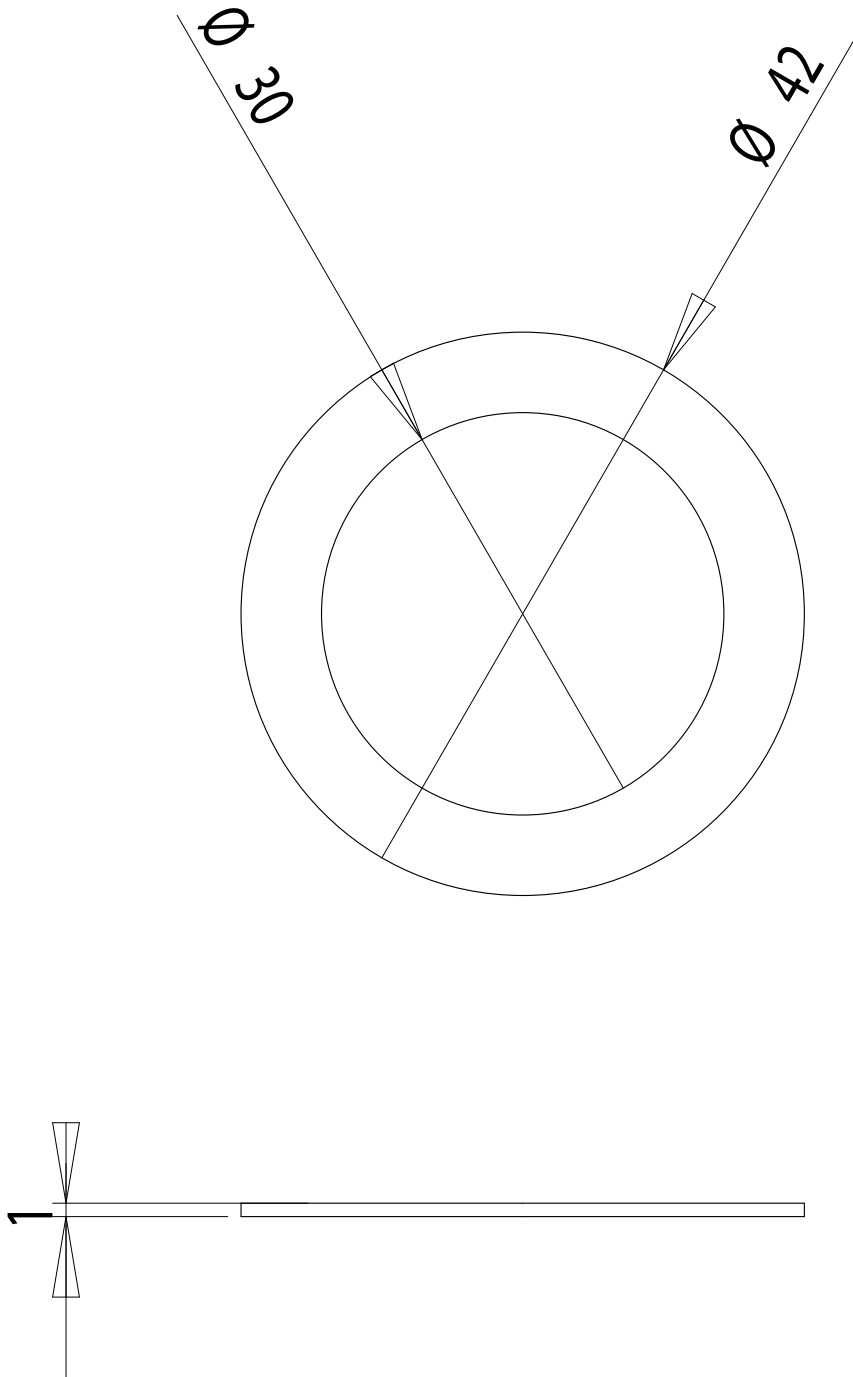
Materials : PAINTED/CHROMED STEEL CAST

Part : WEIGHT

Date :

Rev : 2

Details :



dcw.

Name : LAMP GRAS

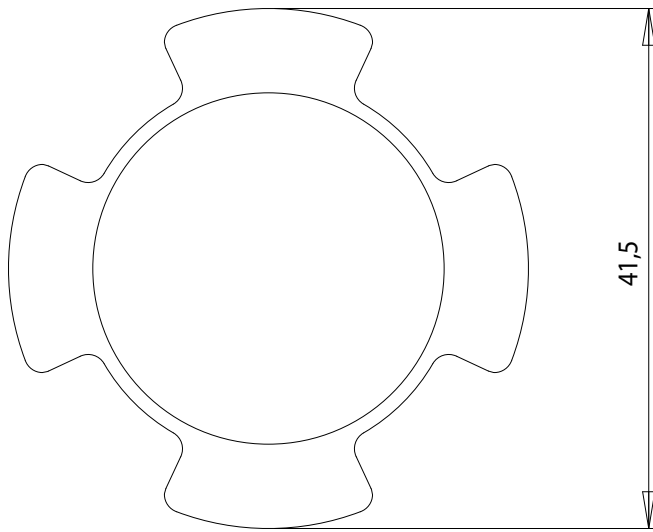
Materials : CHROMED STEEL

Part : METAL WASHER

Date :

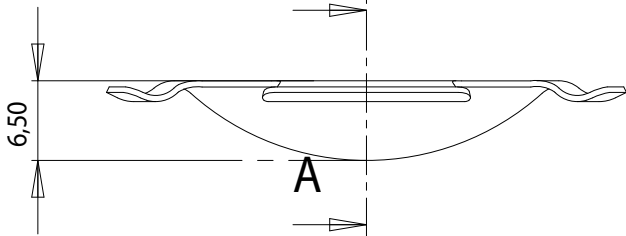
Rev : 1

Details :

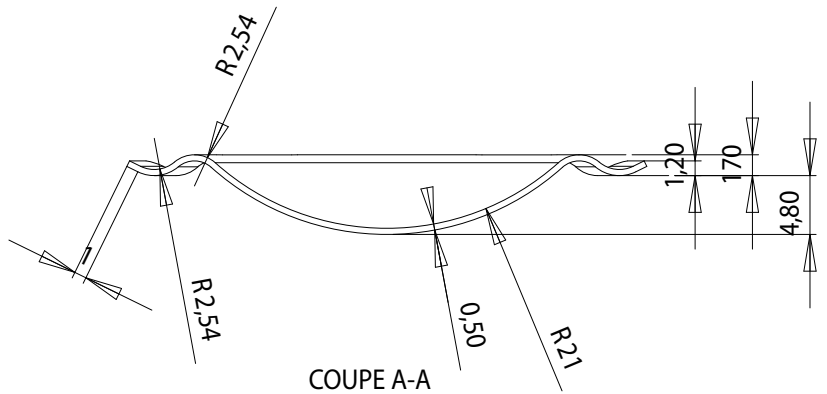


41,5

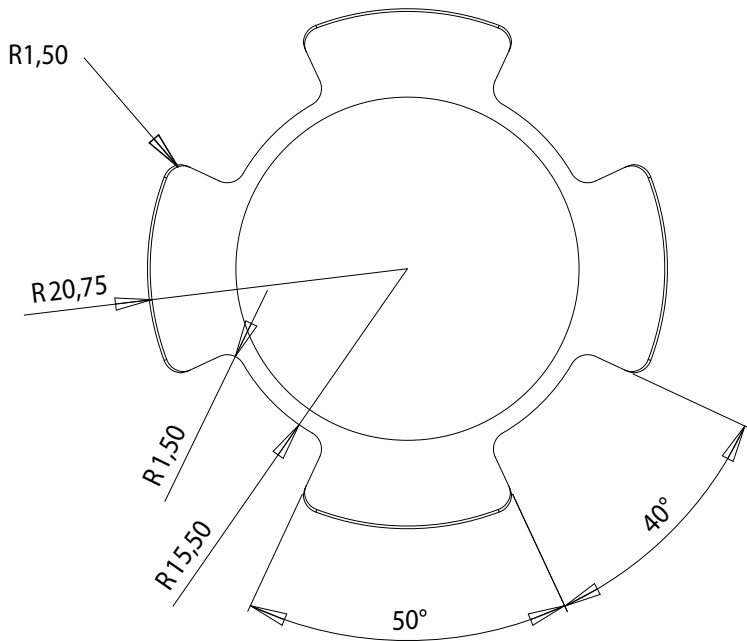
A



A



COUPE A-A



R1,50

R20,75

R1,50

R15,50

50°

40°

dcw.

Name : LAMP GRAS

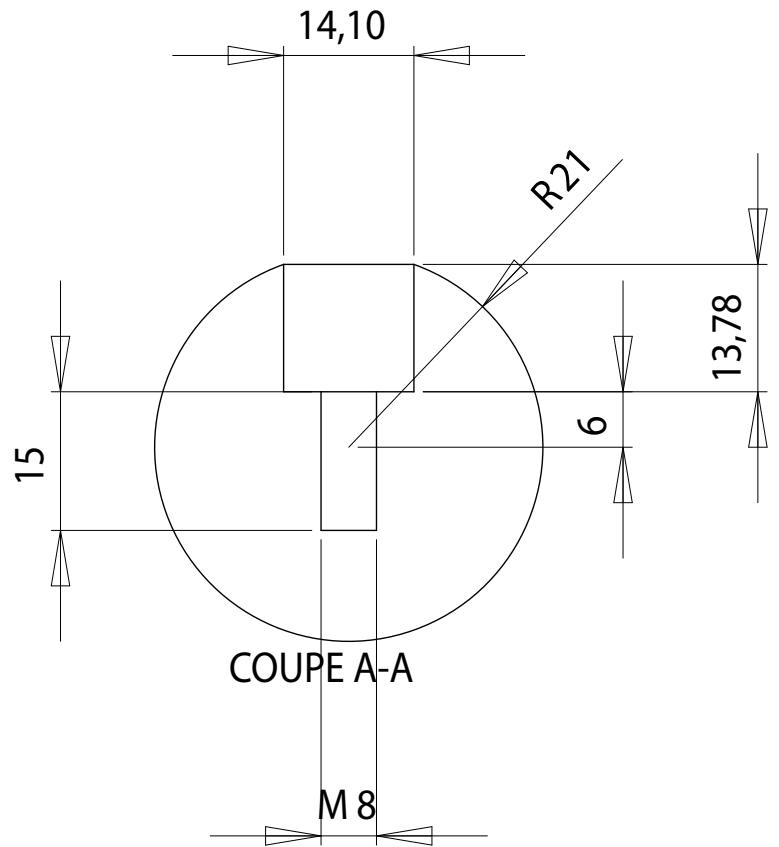
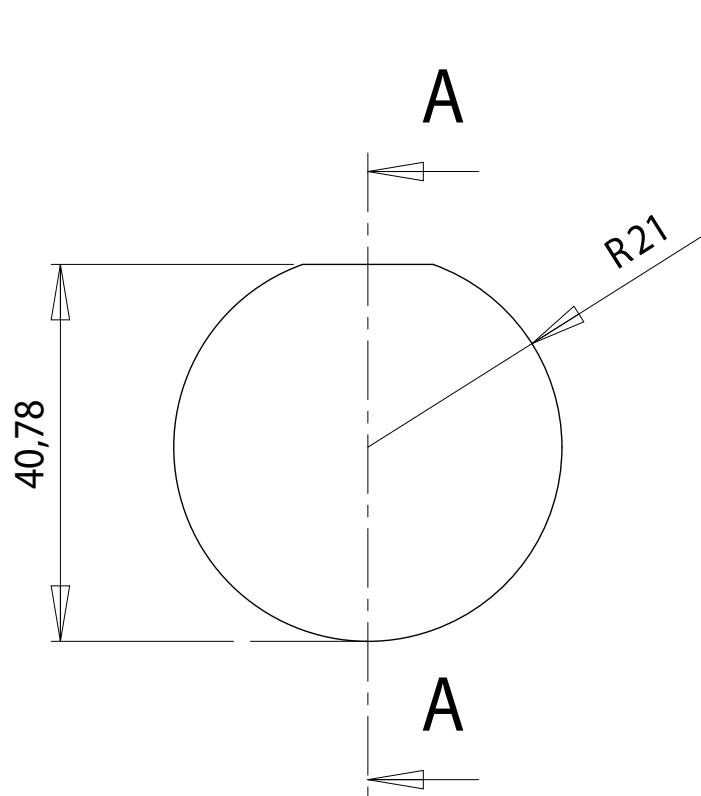
Materials : SPRING STEEL

Part : SPRING

Date :

Rev : 1

Details :



dcw.

Name : LAMP GRAS

Matériaux : BLACK BAKELITE

Part : SPHERE

Date :

Rev : 1

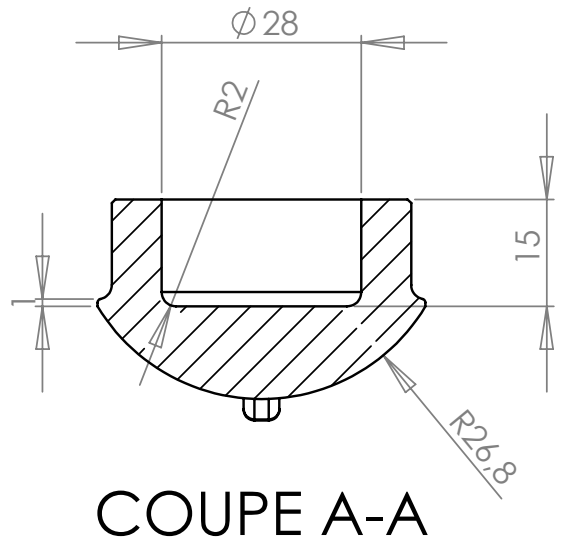
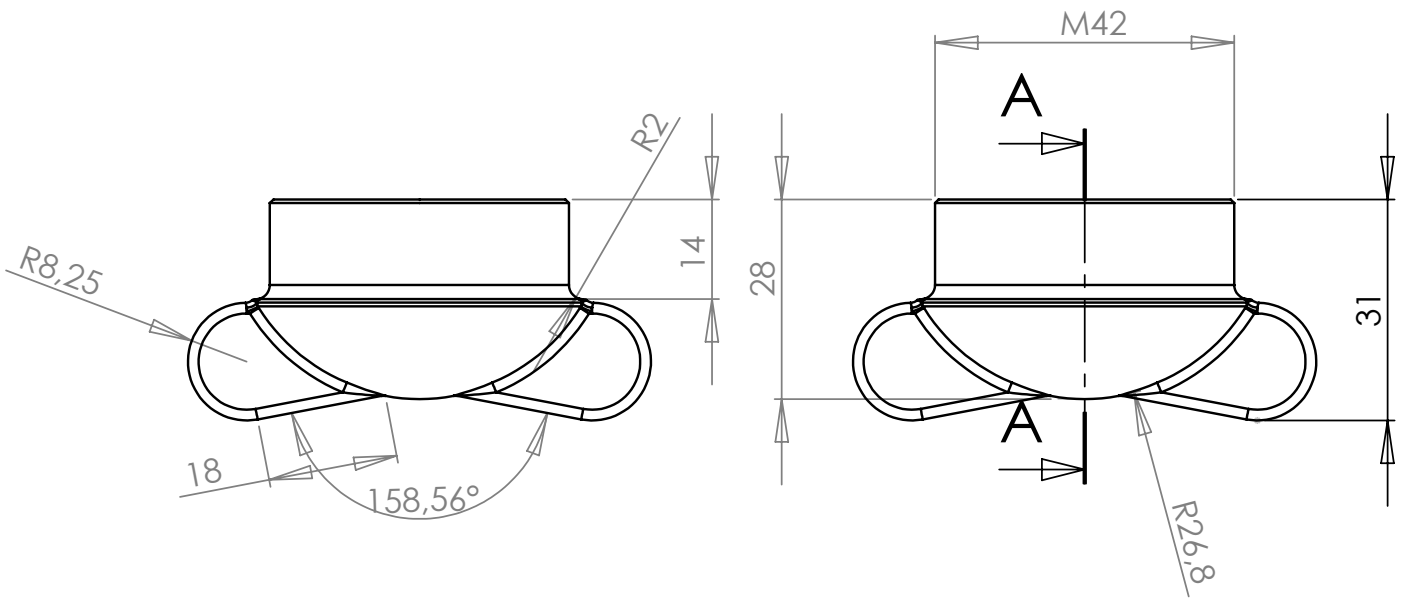
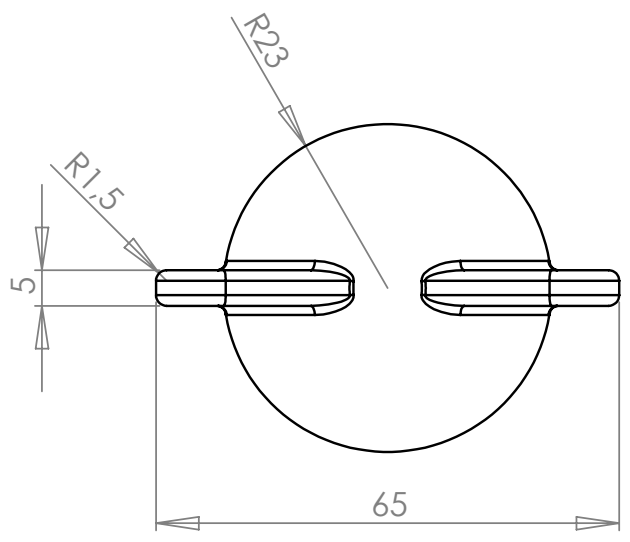
Details :

Name : LAMP GRAS
Part : LOCKING PIECE
Date :

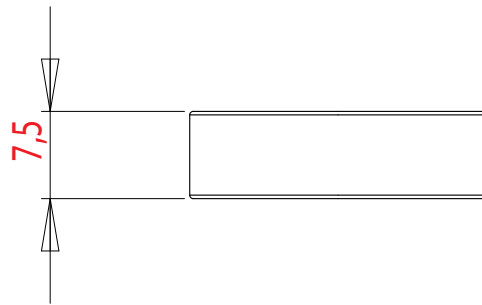
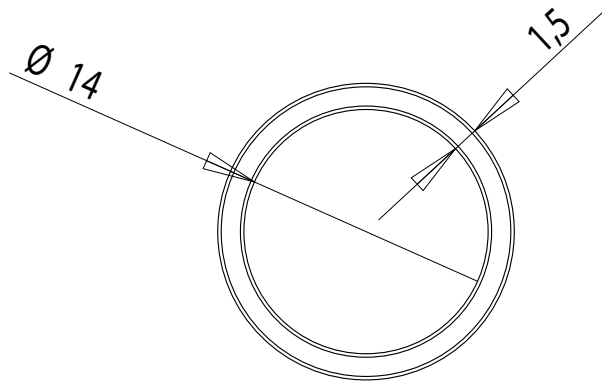
Rev : 1

Materials : CHROMED/PAINTED STEEL
Details :

dcw.



COUPE A-A



dcw.

Name : LAMP GRAS

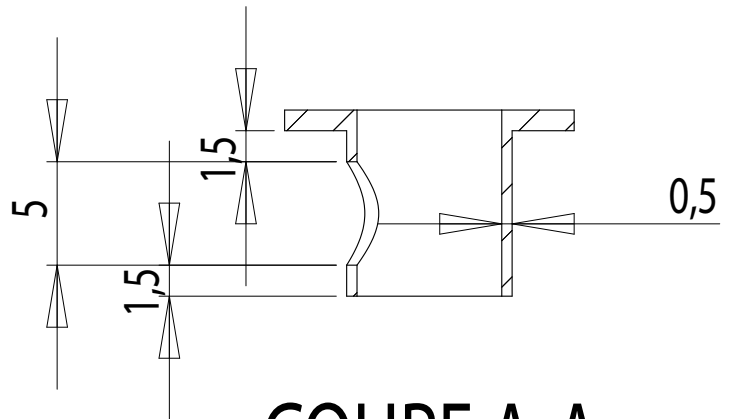
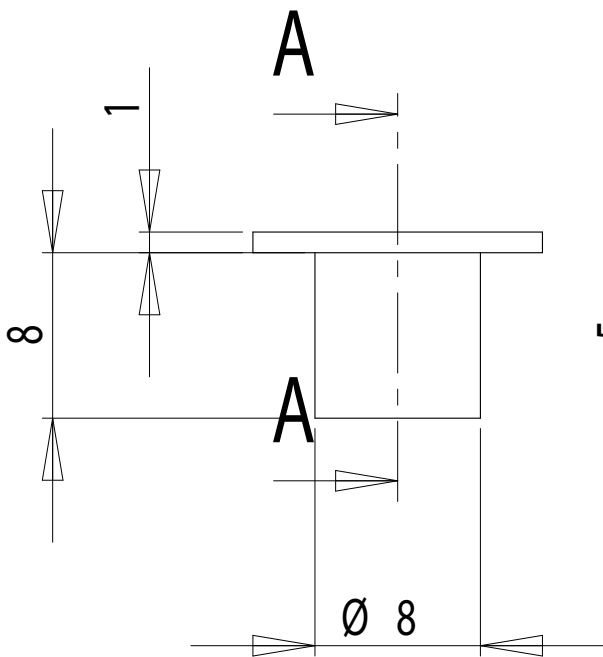
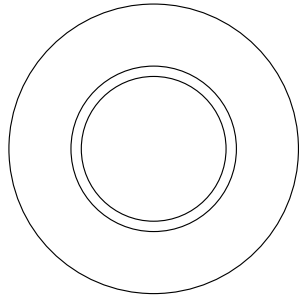
Materials : RUBBER

Part : RUBBER

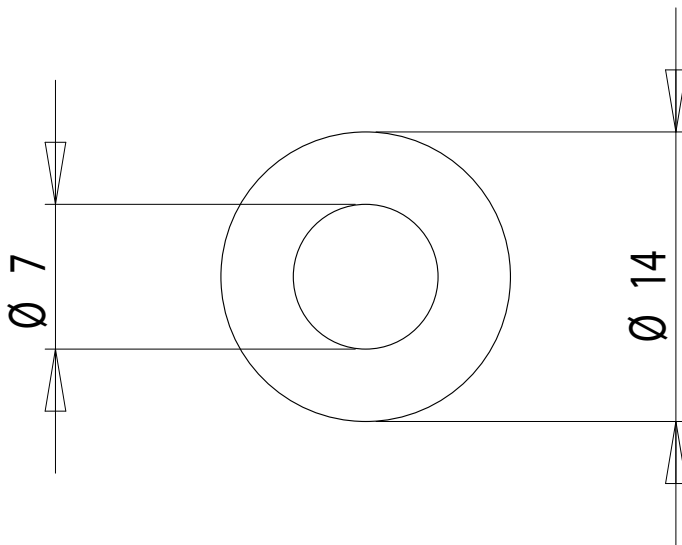
Date :

Rev : 2

Details :



COUPE A-A



dcw.

Name : LAMP GRAS

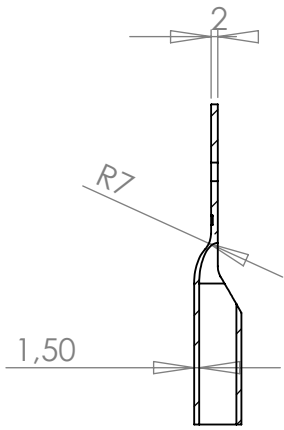
Materials : BLACK PLASTIC

Part : CORD GRIPP

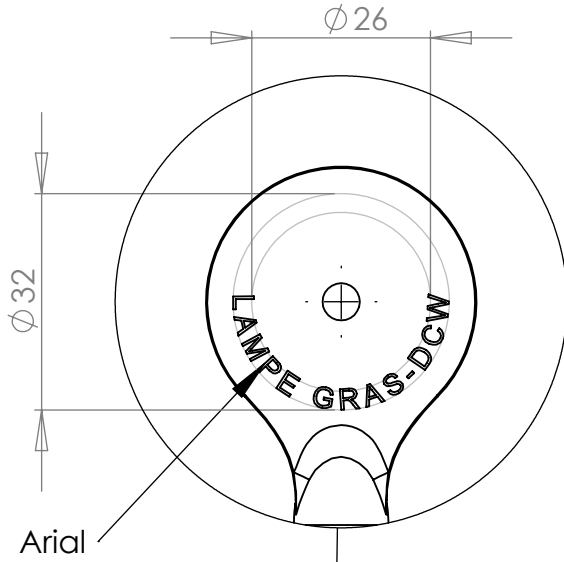
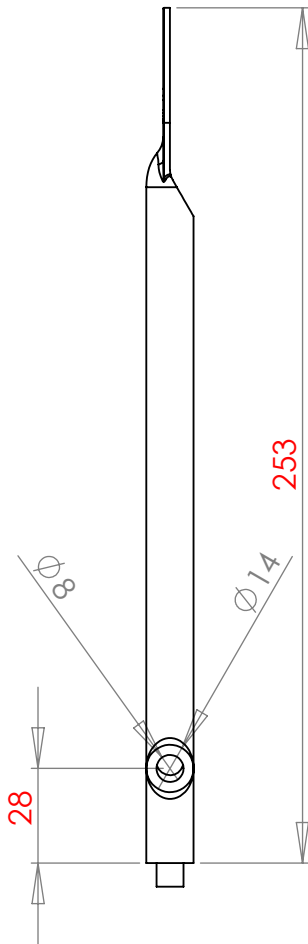
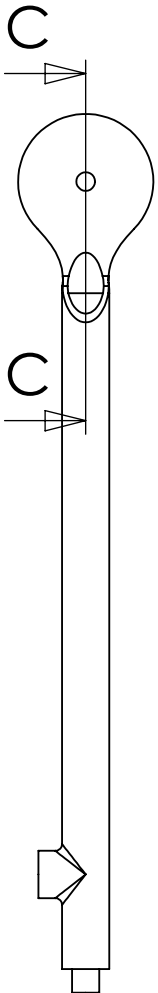
Date :

Rev : 1

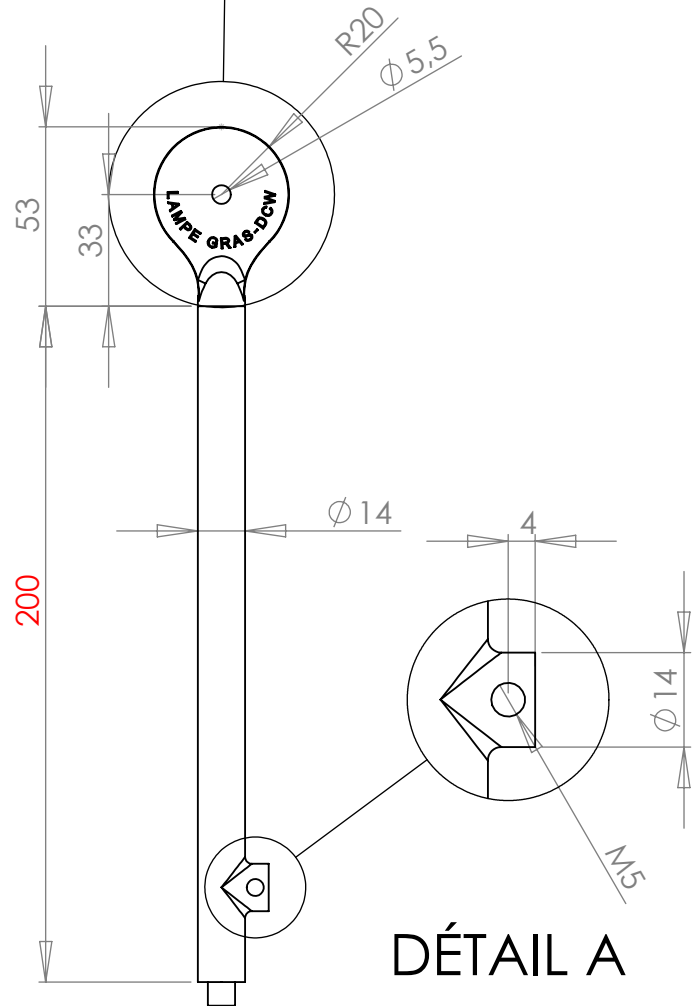
Details :



COUPE C-C



DÉTAIL B



DÉTAIL A

dcw.

Name : LAMP GRAS N°207

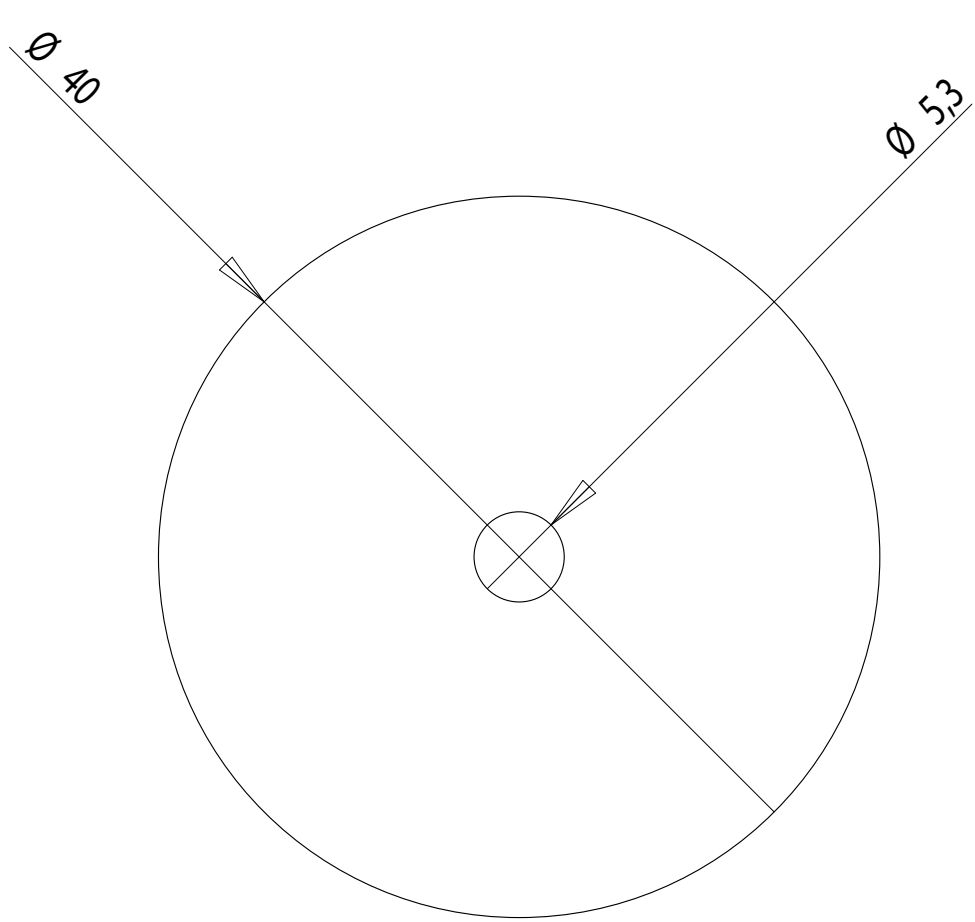
Materials : PAINTED/CHROMED STEEL

Part : TUBE 1

Date :

Rev : 2

Details :



PLIERS SUPPLIED BY DCW

dcw.

Name : LAMP GRAS

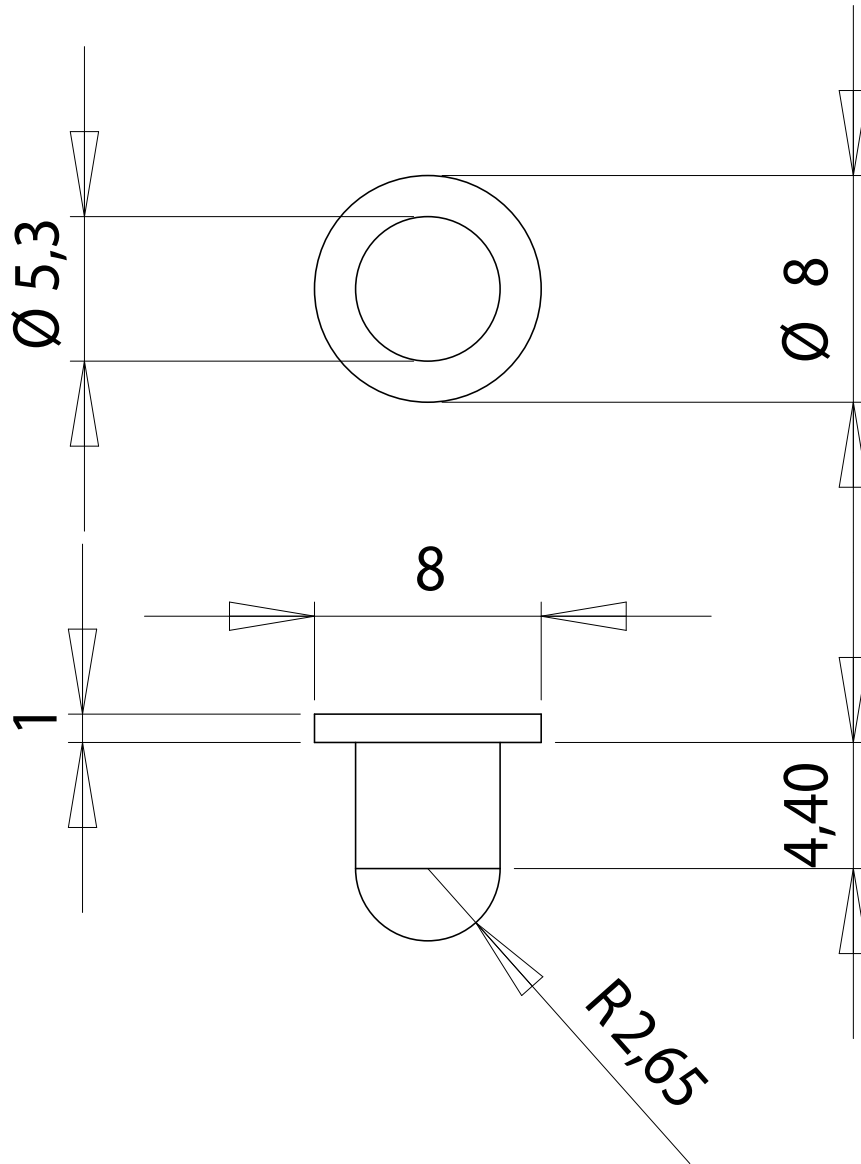
Materials : PLASTIC

Part : PLASTIC WASHER – $\varnothing 40$

Date :

Rev : 1

Details :



dcw.

Name : **LAMP GRAS**

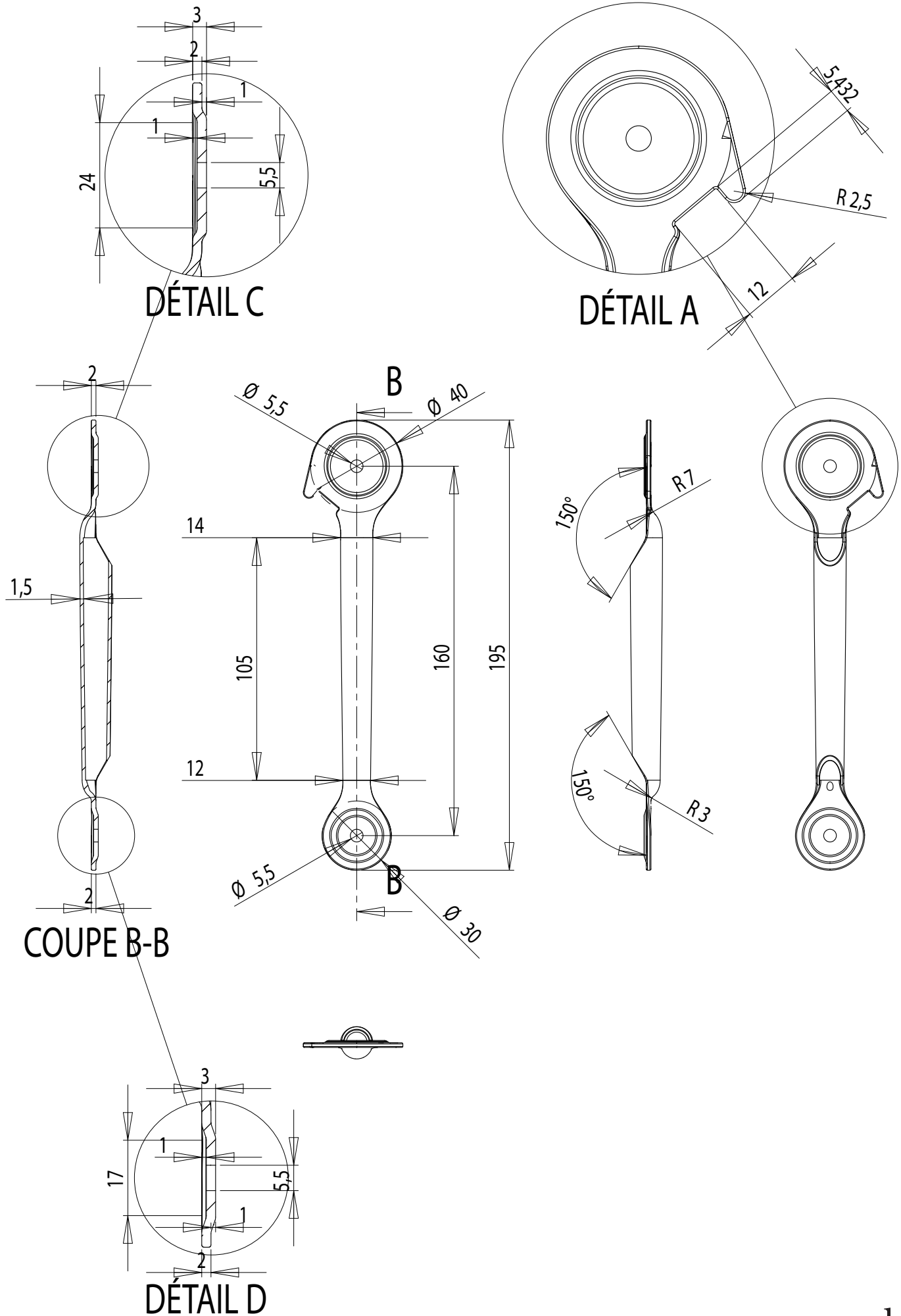
Matériaux : CHROMED STEEL

Part : **AXIS**

Date :

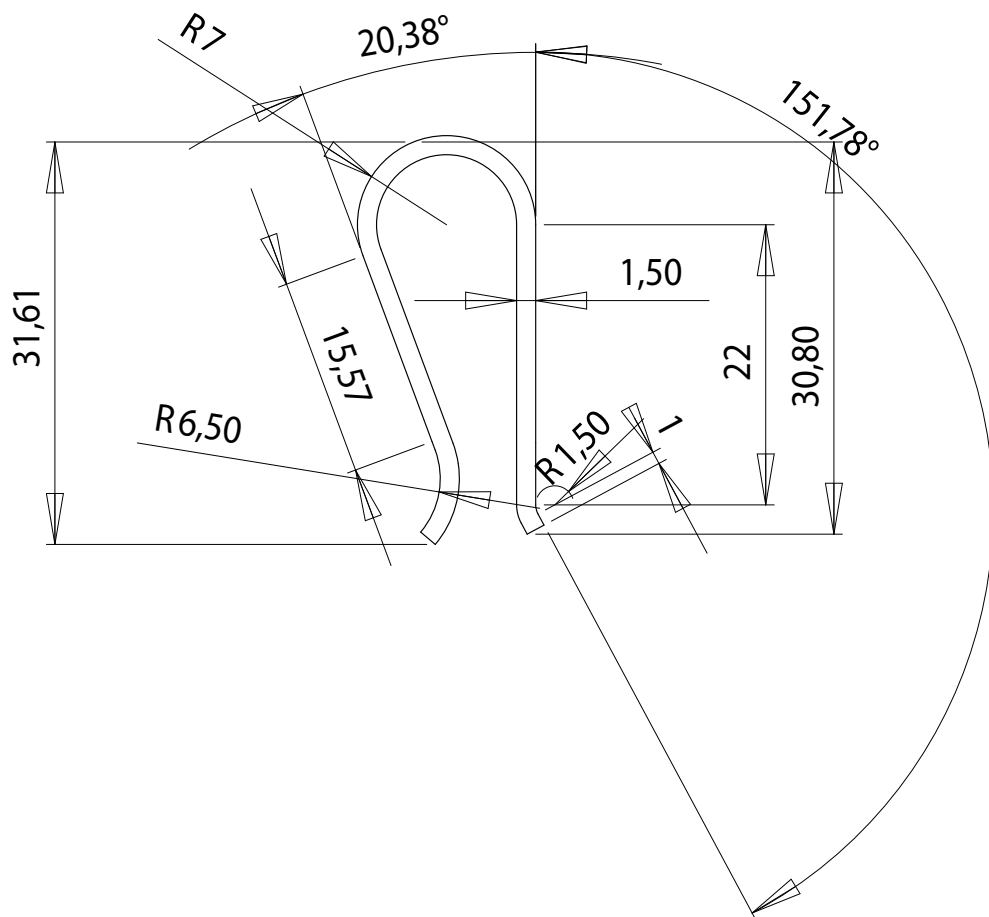
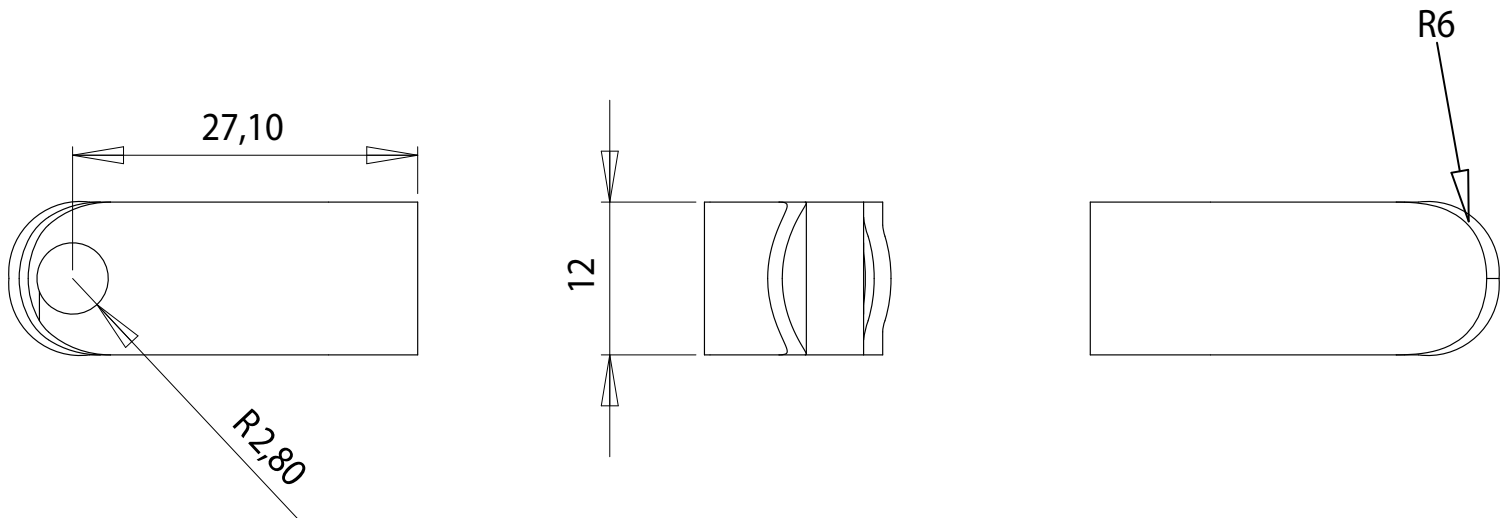
Rev : 1

Details :



dcw.

Name : LAMP GRAS		Materials : PAINTED STEEL/CHROMED STEEL
Part : TUBE 2		
Date :	Rev : 1	Details :



PLIERS SUPPLIED BY DCW

dcw.

Name : LAMP GRAS

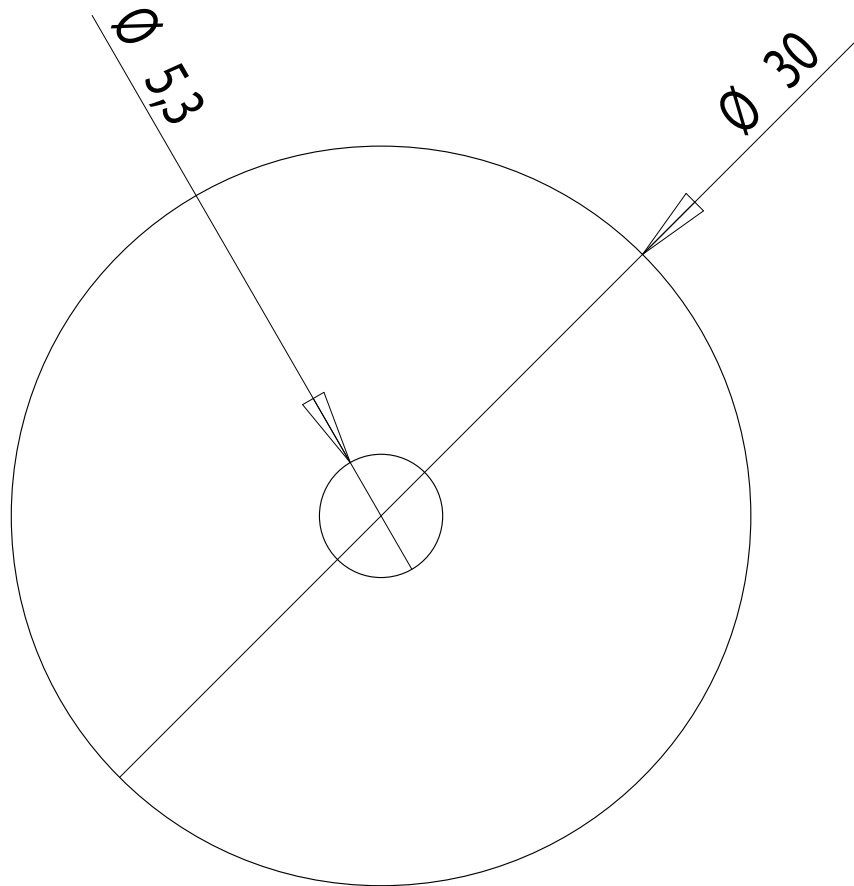
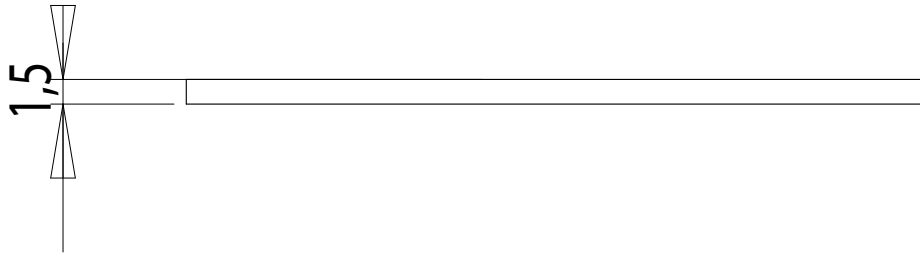
Materials : SPRING CHROMED STEEL

Part : PLIERS

Date :

Rev : 1

Details :



PLIERS SUPPLIED BY DCW

dcw.

Name : LAMP GRAS

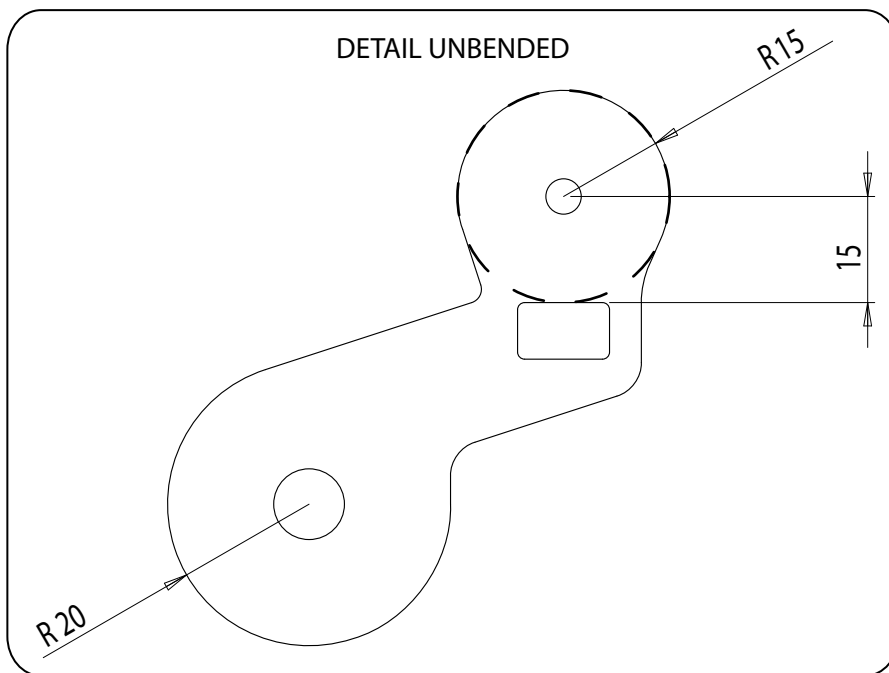
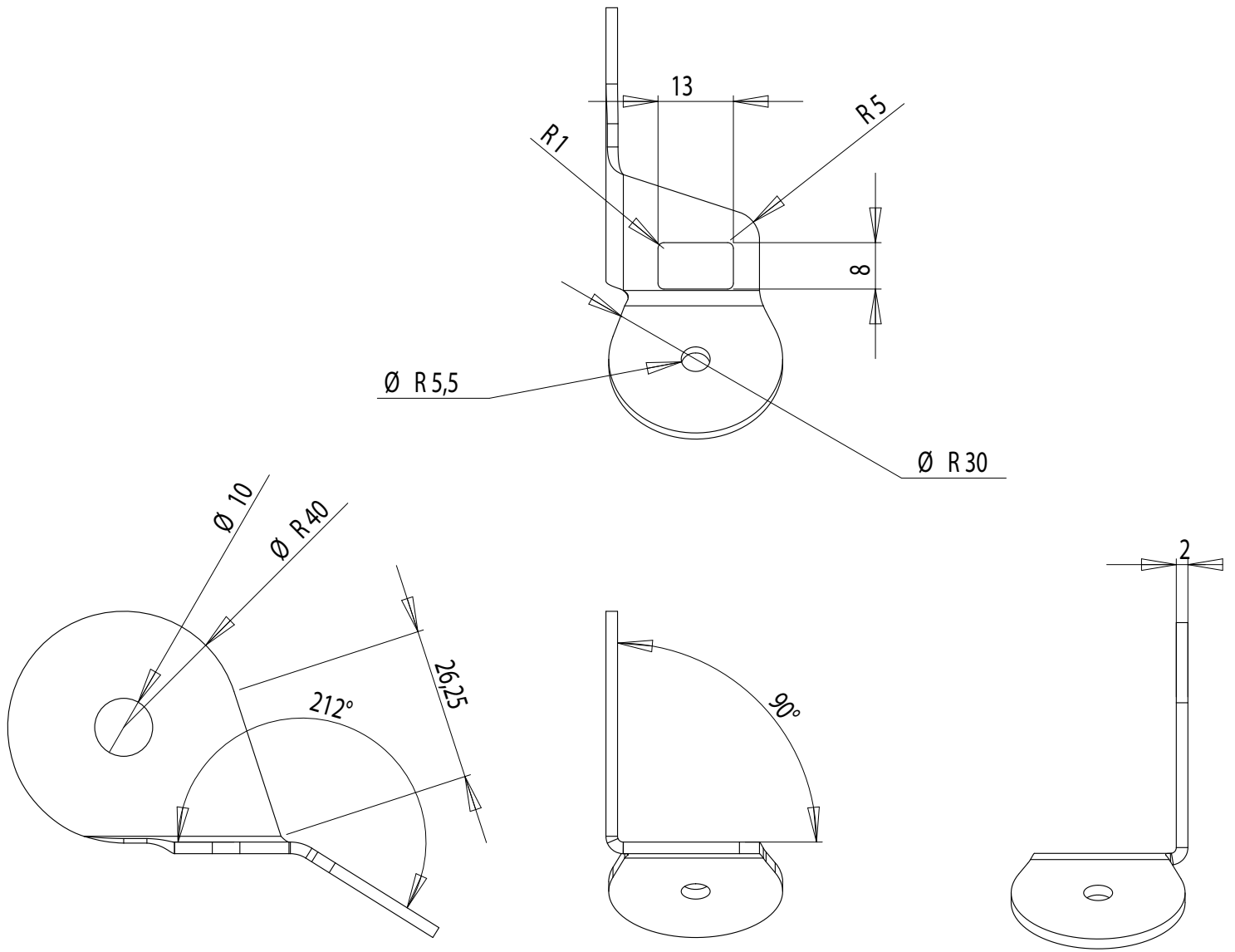
Materials : PLASTIC

Part : PLASTIC WASHER – Ø30

Date :

Rev : 1

Details :



dcw.

Name : **LAMP GRAS**

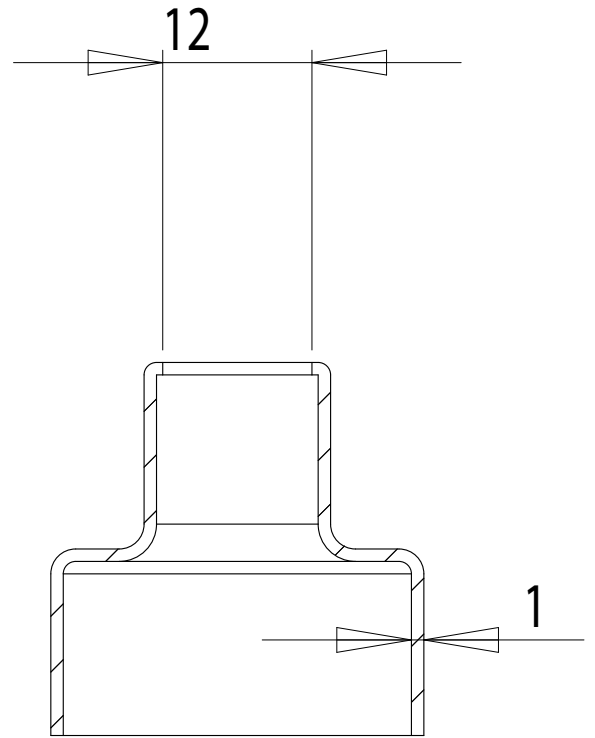
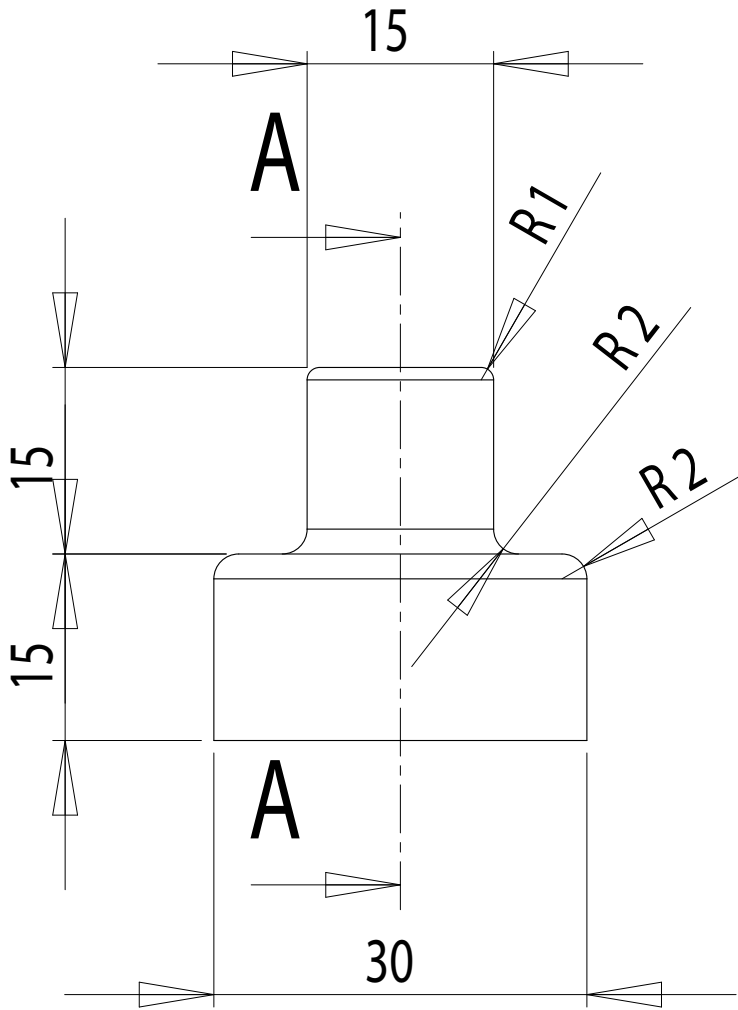
Materials : PAINTED STEEL / CHROMED STEEL

Part : **JUNCTION PIECE**

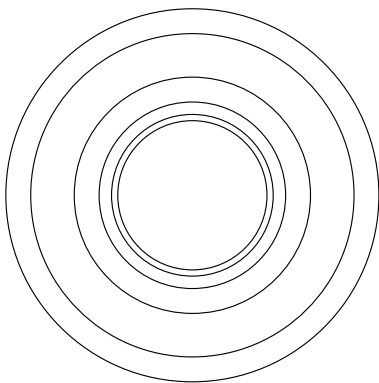
Date :

Rev : 1

Details :



COUPE A-A



dcw.

Name : **LAMP GRAS**

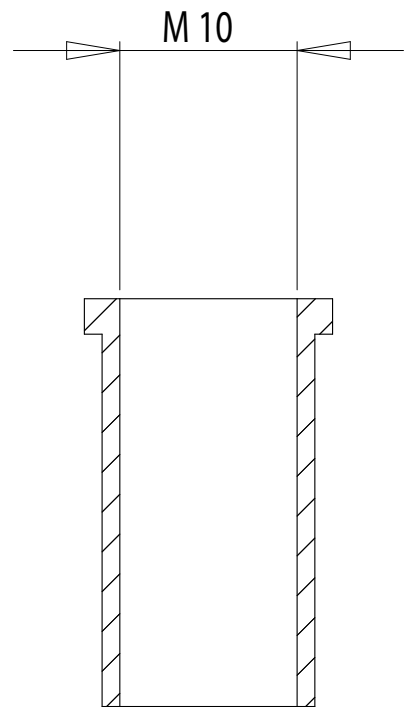
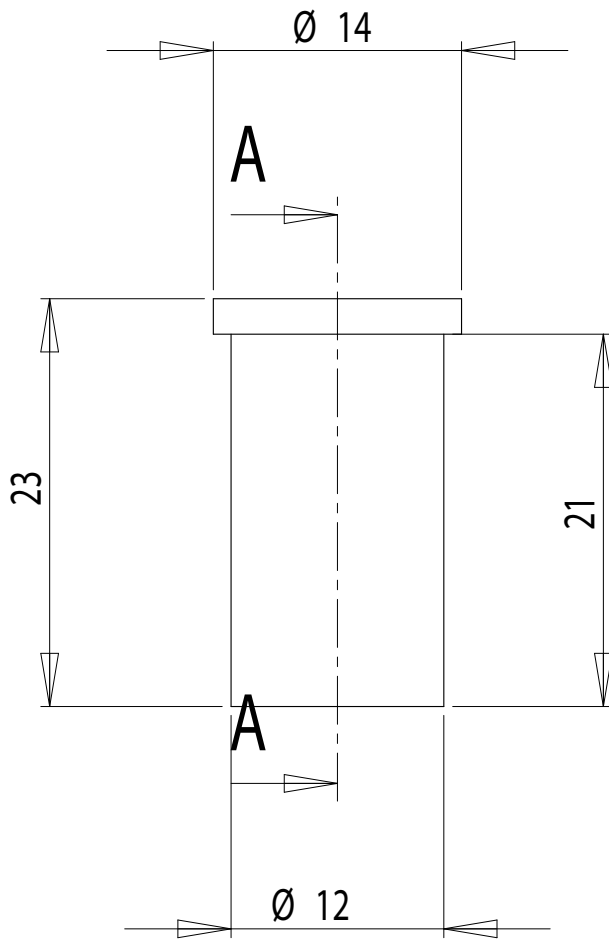
Materials : PAINTED STEEL / CHROMED STEEL

Part : **COVERING PIECE**

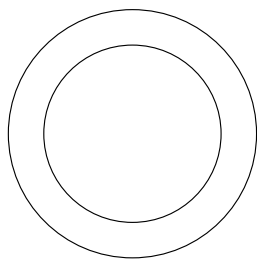
Date :

Rev : 1

Details :



COUPE A-A



dcw.

Name : LAMP GRAS

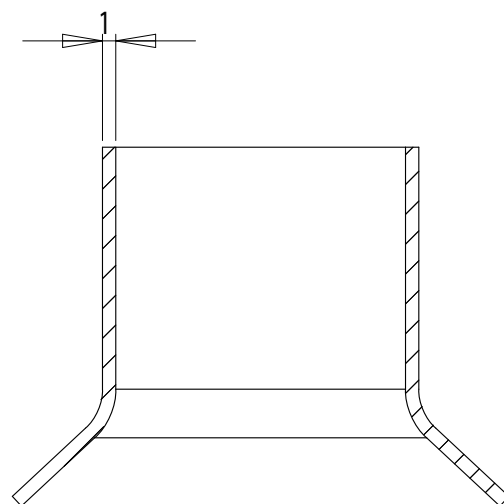
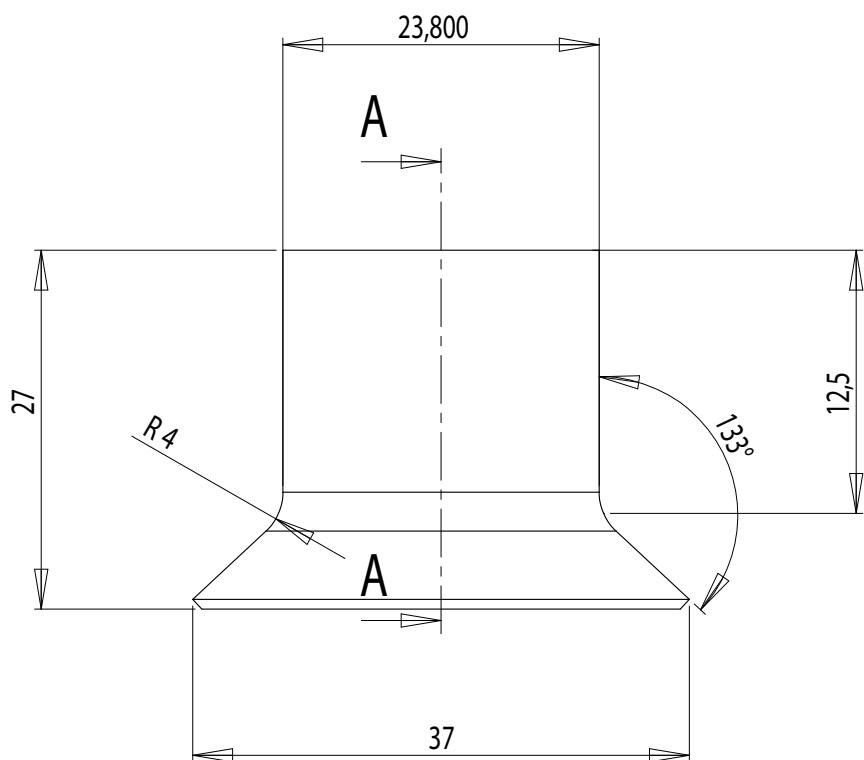
Materials : PAINTED STEEL / CHROMED STEEL

Part : FIXATION PIECE

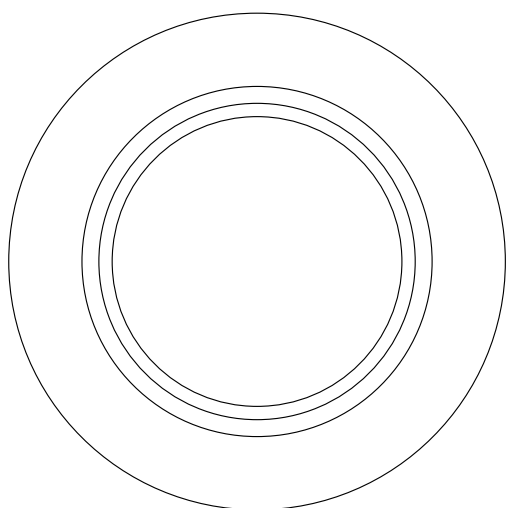
Date :

Rev : 1

Details :



COUPE A-A



dcw.

Name : LAMP GRAS N°207

Matériaux : CHROMED STEEL

Part : BULBHOLDER SPACER

Date :

Rev : 2

Details :