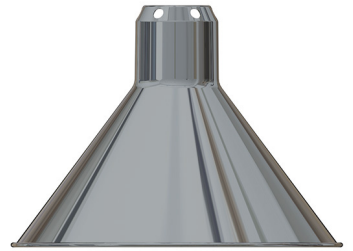


BL

SAT



CH



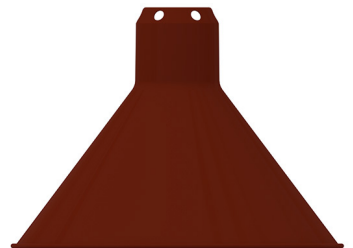
BLUE



YELLOW



RED



Qty	Piece	Finishing			
1	WEIGHT		1	TUBE 2	BLACK SATIN
1	JUNCTION PIECE 2		1	JUNCTION PIECE	BLACK SATIN
1	BASE	BLACK SATIN	1	COVERING PIECE	BLACK SATIN
1	CAST	BLACK SATIN	1	FIXATION PIECE	CHROME
1	TUBE	BLACK SATIN	1	BULBHOLDER SPACER	CHROME
1	TUBE BOLT	BLACK SATIN	1	BULBHOLDER SCREW	CHROME
1	LOCKING PIECE	BLACK SATIN	1	BULBHOLDER	
1	HANDLE	BLACK SATIN	1	M5 x 5 PLASTIC SCREW	BLACK
1	PLASTIC TUBE	BLACK	1	M4 SCREW	
1	CELORON PIECE			THREAD 10X100	
2	BELLEVILLE WASHER				
1	SPHERE	BLACK		SHA 215 SAT	BLACK SATIN OUTSIDE / WHITE INSIDE
1	RUBBER	BLACK		SHA 215 CHROME	CHROME OUTSIDE / WHITE INSIDE
1	CORD GRIP	BLACK		SHA 215 BLUE	BLUE SATIN OUTSIDE / WHITE INSIDE
1	TUBE 1	BLACK SATIN		SHA 215 YELLOW	YELLOW SATIN OUTSIDE / WHITE INSIDE
1	PLASTIC WASHER Ø40	RED		SHA 215 RED	RED SATIN OUTSIDE / WHITE INSIDE
1	PLASTIC WAHSER Ø30	RED			
2	PLIERS	CHROME			
2	AXIS	CHROME			

dcw.

Name : LAMP GRAS N°215 BL—...

Matérials :

Part :

Date :

Rev : 2

Details : E14 - 11w ; Arditi métal bulbholder ; Black fabric wire



Qty	Piece	Finishing			
1	WEIGHT		1	TUBE 2	CHROME
1	JUNCTION PIECE 2		1	JUNCTION PIECE	CHROME
1	BASE	CHROME	1	COVERING PIECE	CHROME
1	CAST	CHROME	1	FIXATION PIECE	CHROME
1	TUBE	CHROME	1	BULBHOLDER SPACER	CHROME
1	TUBE BOLT	CHROME	1	BULBHOLDER SCREW	CHROME
1	LOCKING PIECE	CHROME	1	BULBHOLDER	CHROME
1	HANDLE	CHROME	1	M5 x 5 PLASTIC SCREW	BLACK
1	PLASTIC TUBE	BLACK	1	M4 SCREW	
1	CELORON PIECE			THREAD 10X100	
2	BELLEVILLE WASHER				
1	SPHERE	BLACK		SHA 215 CHROME	CHROME OUTSIDE / WHITE INSIDE
1	RUBBER	BLACK			
1	CORD GRIP	BLACK			
1	TUBE 1	CHROME			
1	PLASTIC WASHER Ø40	RED			
1	PLASTIC WAHSER Ø30	RED			
2	PLIERS	CHROME			
2	AXIS	CHROME			

dcw.

Name : LAMP GRAS N°215 CH-CH

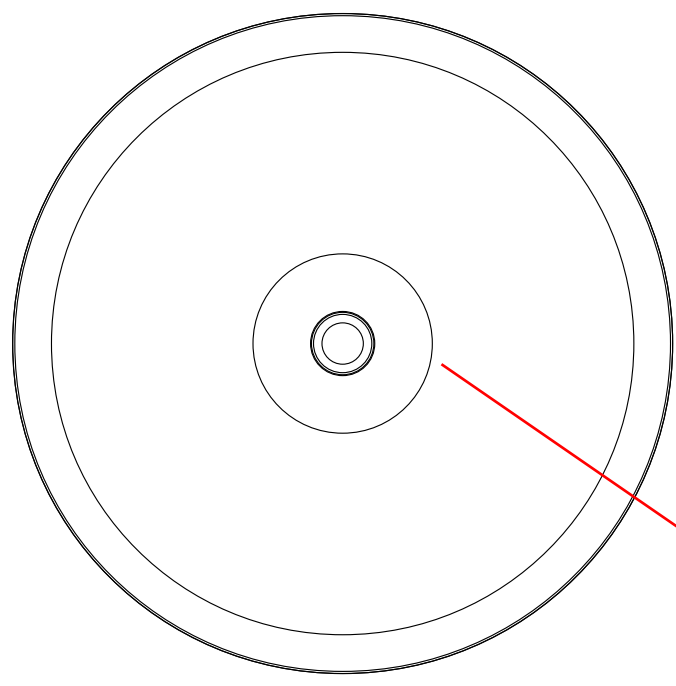
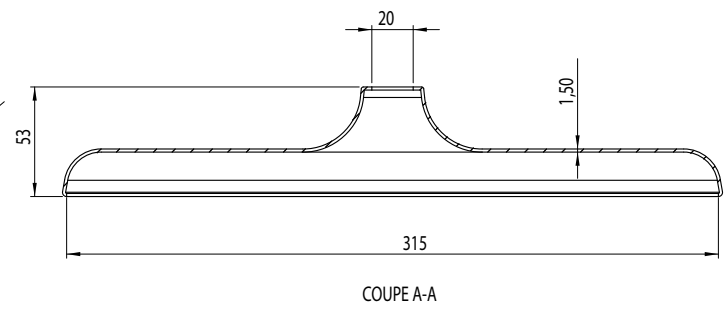
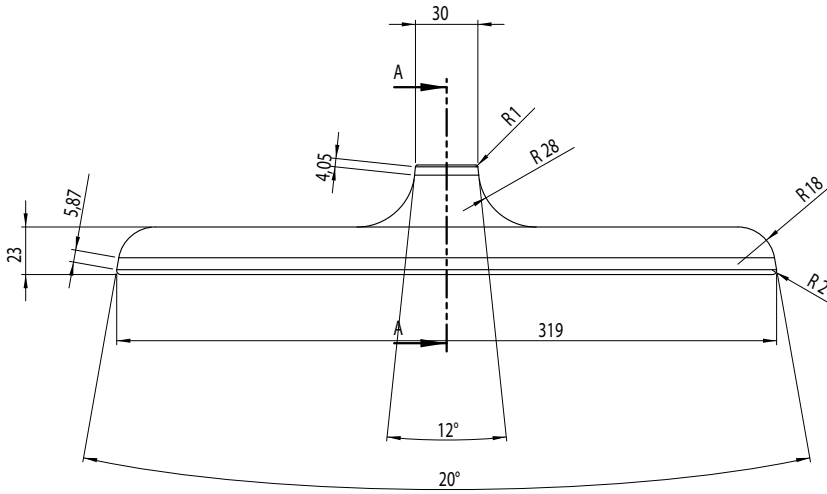
Matérials :

Part :

Date :

Rev : 2

Details : E14 - 11w ; Arditi métal bulbholder ; Black fabric wire



WITHOUT THE THREE HOLES

dcw.

Name : LAMP GRAS N°215

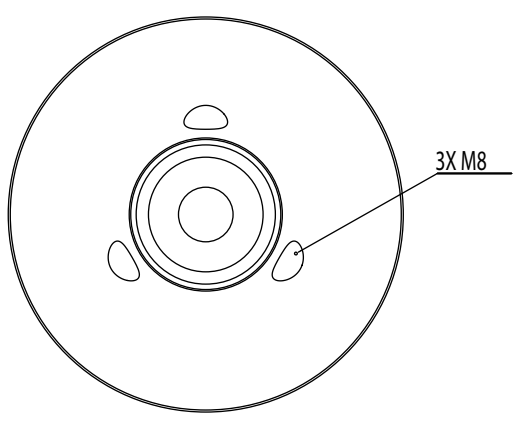
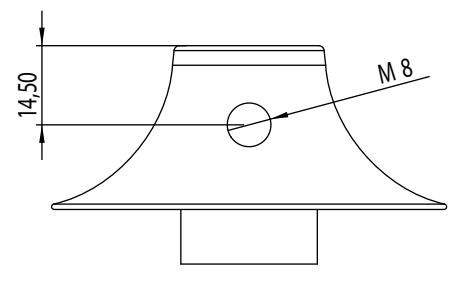
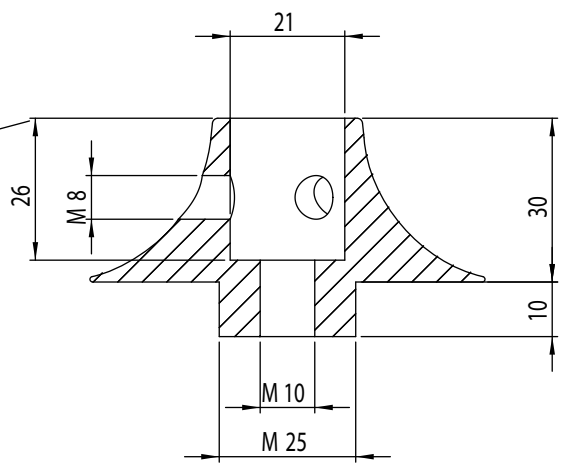
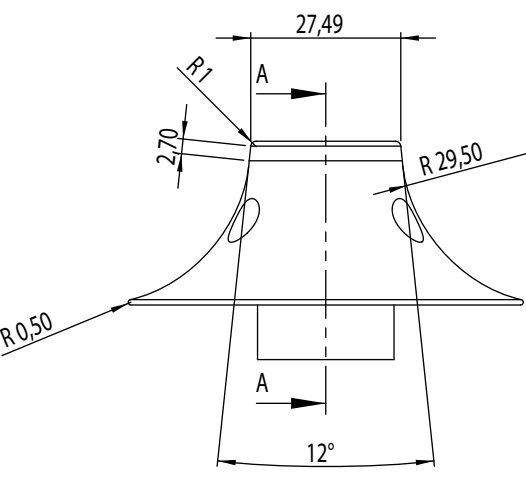
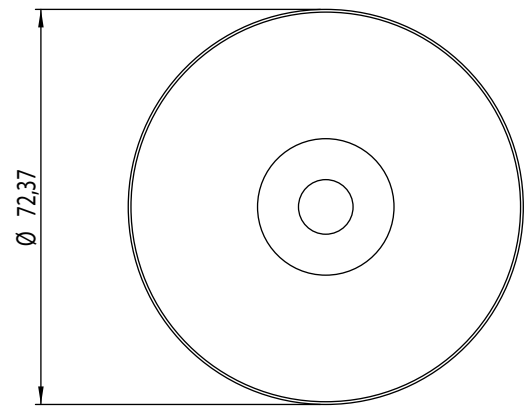
Materials : PAINTED/CHROMED STEEL

Part : BASE

Date :

Rev : 1

Details :



dcw.

Name : LAMP GRAS N°215

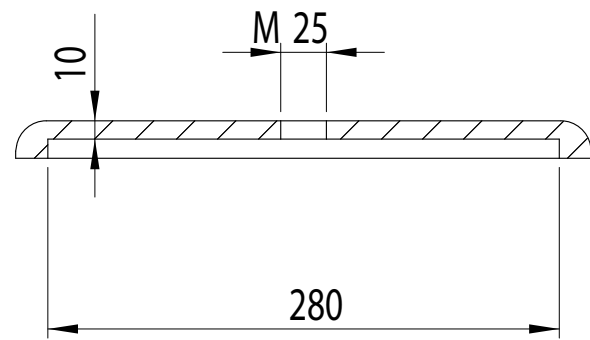
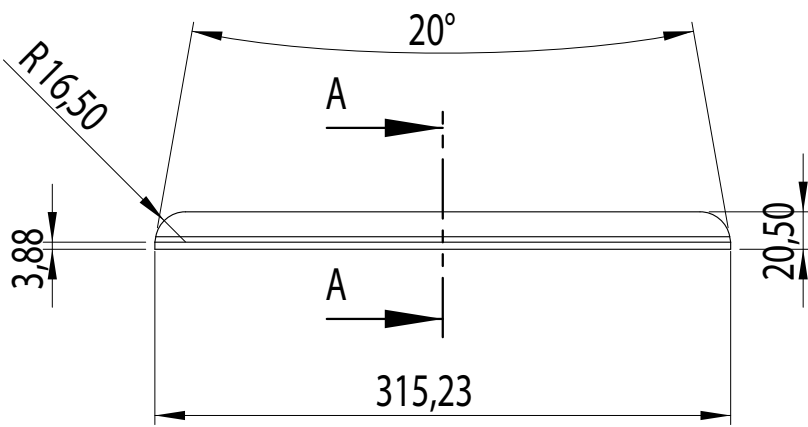
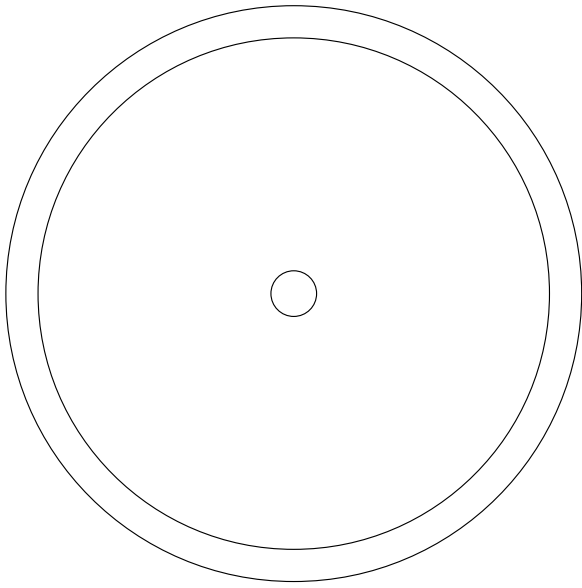
Materials : STEEL

Part : JUNCTION PIECE 2

Date :

Rev : 1

Details :



COUPE A-A

dcw.

Name : LAMP GRAS N°215

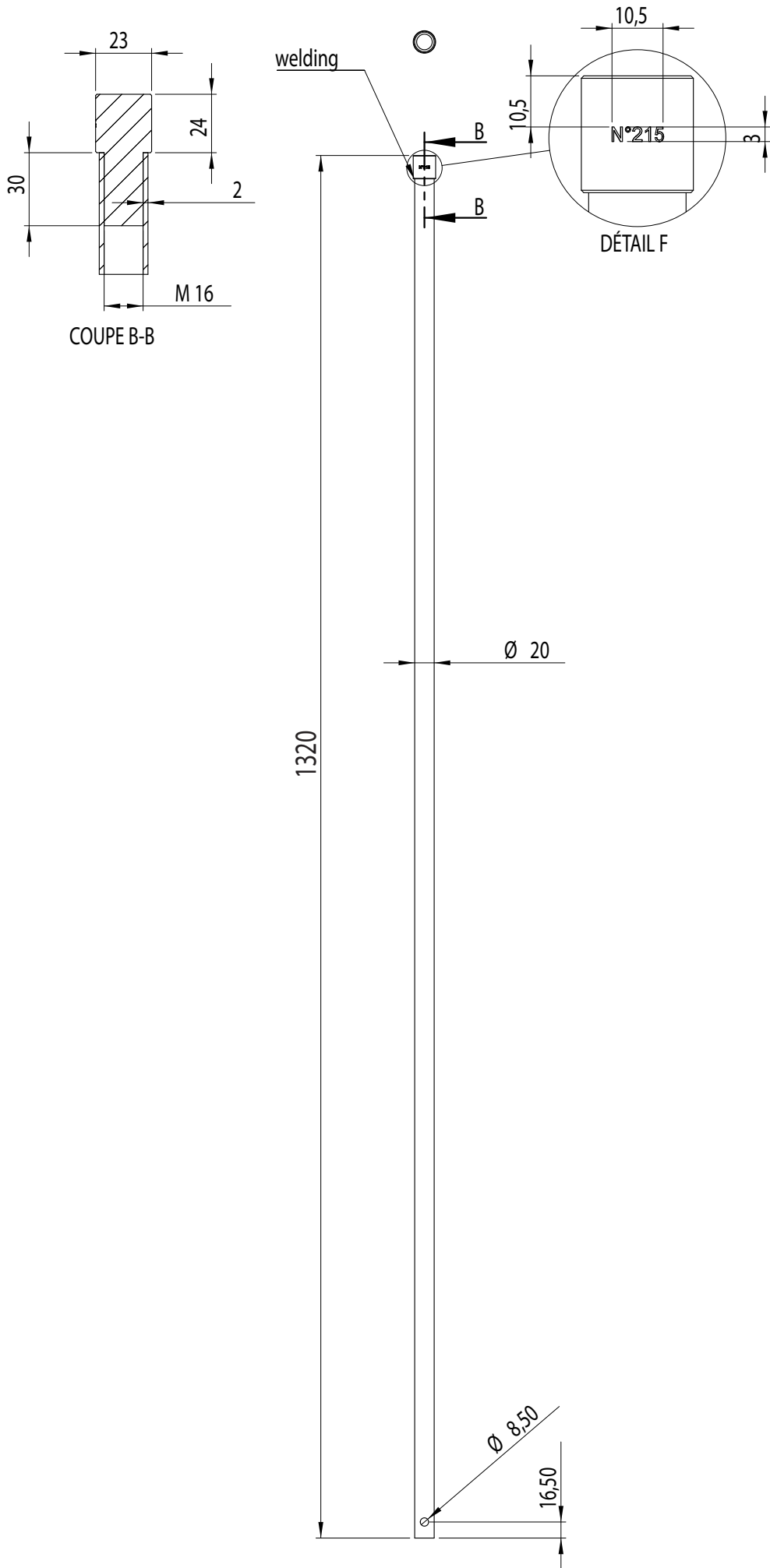
Materials : STEEL

Part : WEIGHT

Date :

Rev : 1

Details :



dcw.

Name : LAMP GRAS N°215

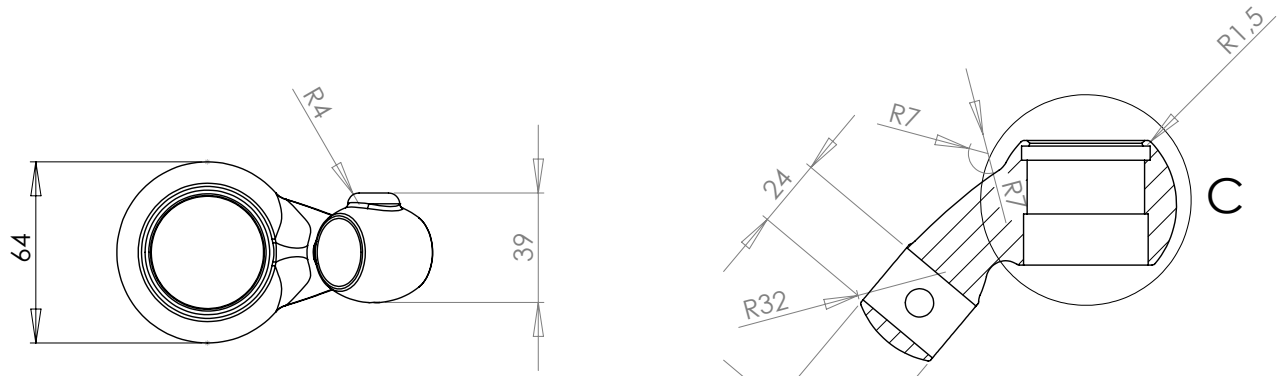
Materials : CHROMED/PAINTED STEEL

Part : TUBE

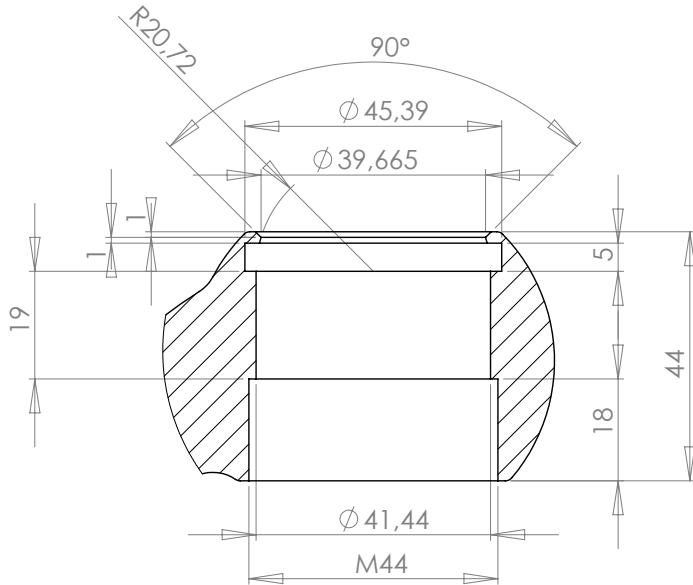
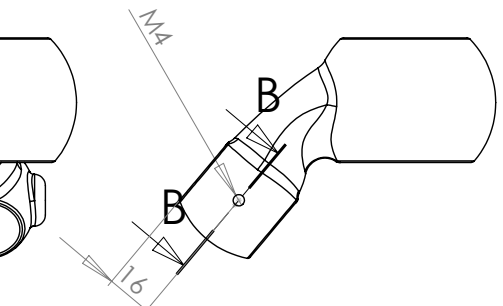
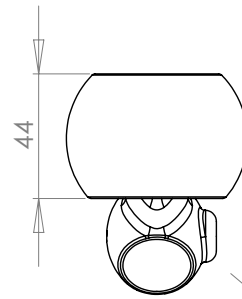
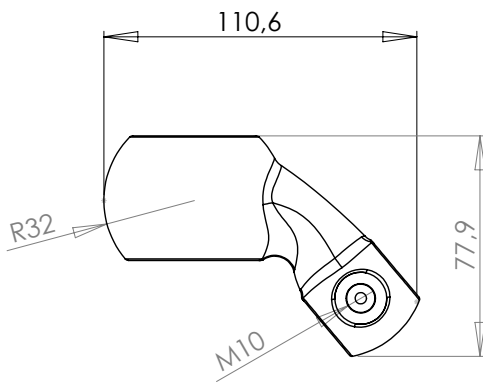
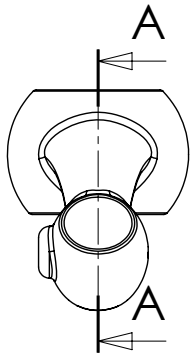
Date :

Rev : 1

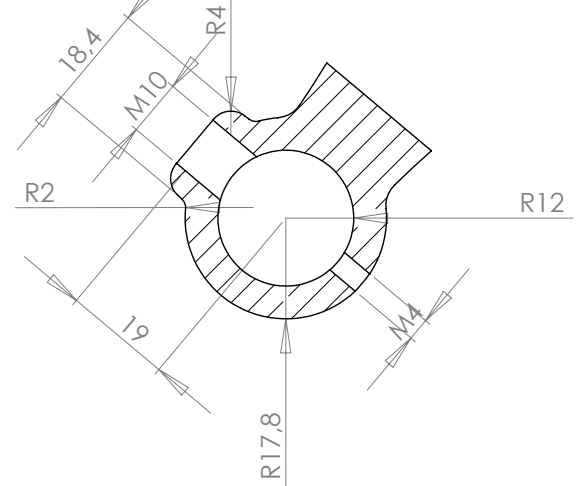
Details :



COUPE A-A



DÉTAIL C



COUPE B-B

dcw.

Name : LAMP GRAS N°215

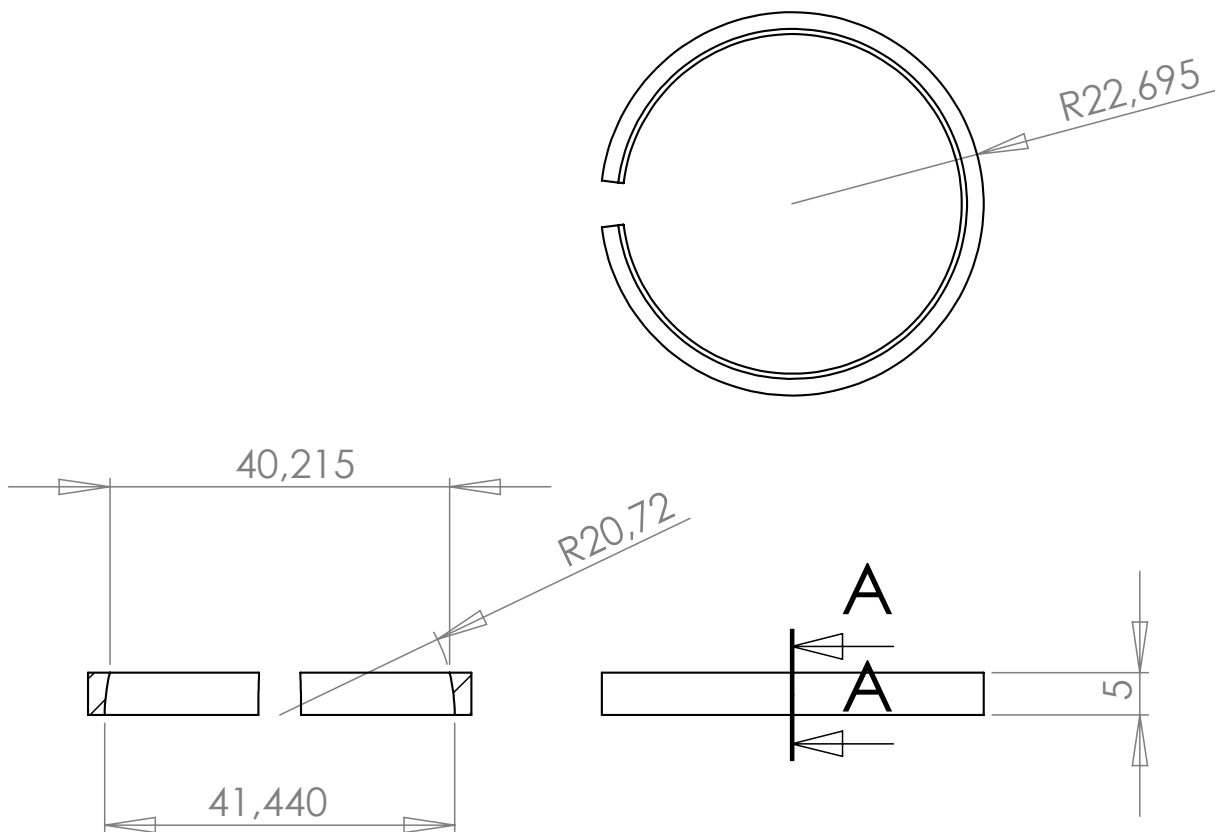
Matériaux : PAINTED STEEL/CHROMED STEEL

Part : CAST

Date :

Rev : 2

Details :



COUPE A-A

dcw.

Name : **LAMP GRAS**

Matériaux : PA 6

Part : **BREAKING RING**

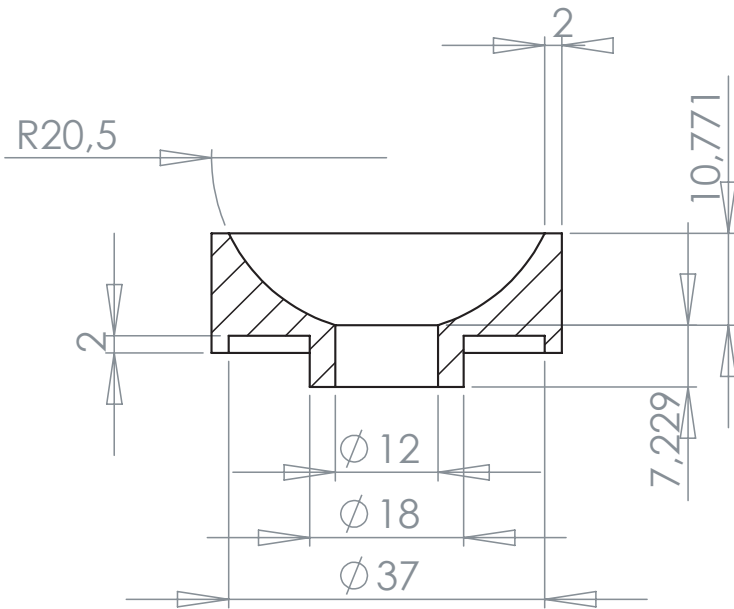
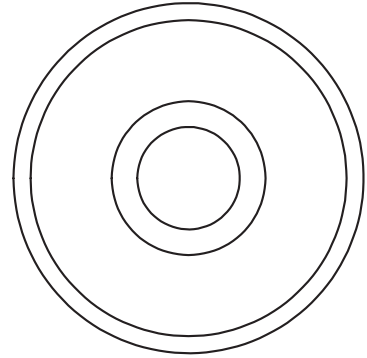
Date :

Rev : 1

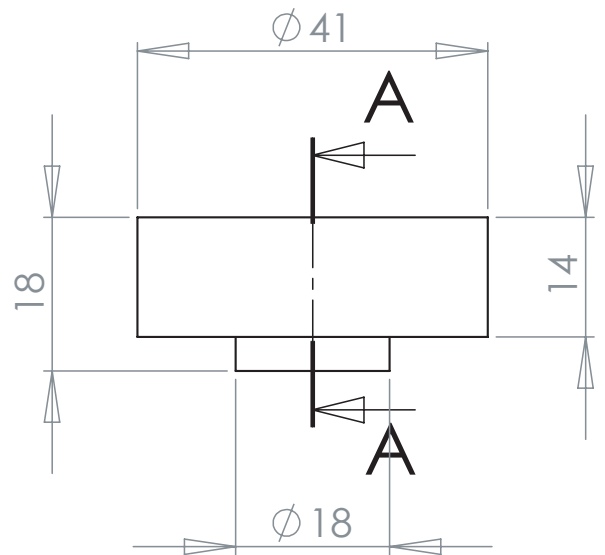
Details :



CELERON



COUPE A-A



dcw.

Name : LAMP GRAS

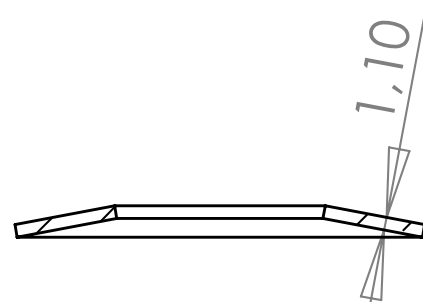
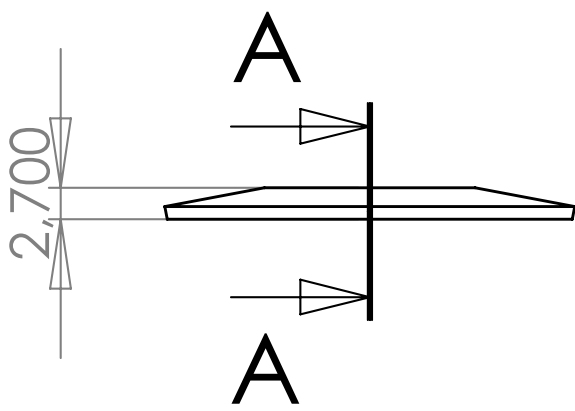
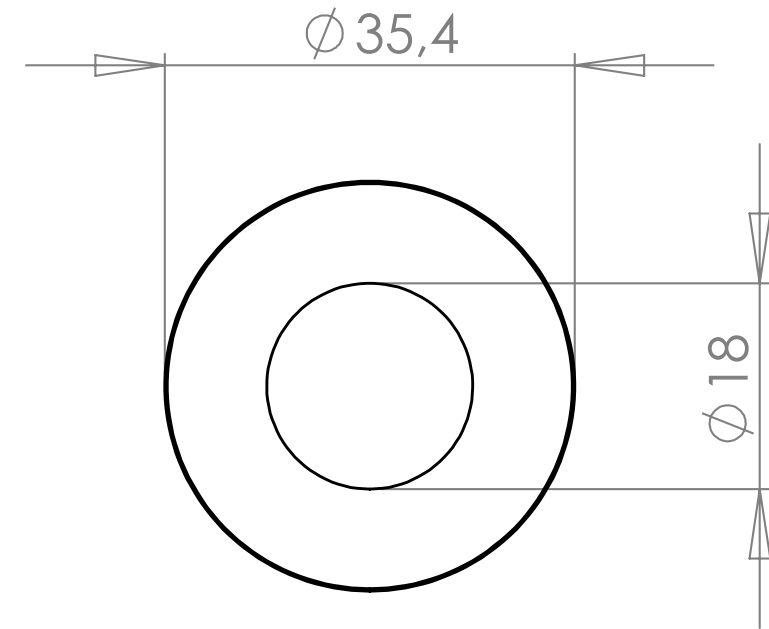
Matériaux : CELERON / THERMOPLASTIC RESIN

Part : BALL BREAKER NEW

Date :

Rev : 1

Details :



COUPE A-A

dcw.

Name : LAMP GRAS

Matériaux : SPRING STEEL

Part : BELLEVILLE WASHER

Date :

Rev : 1

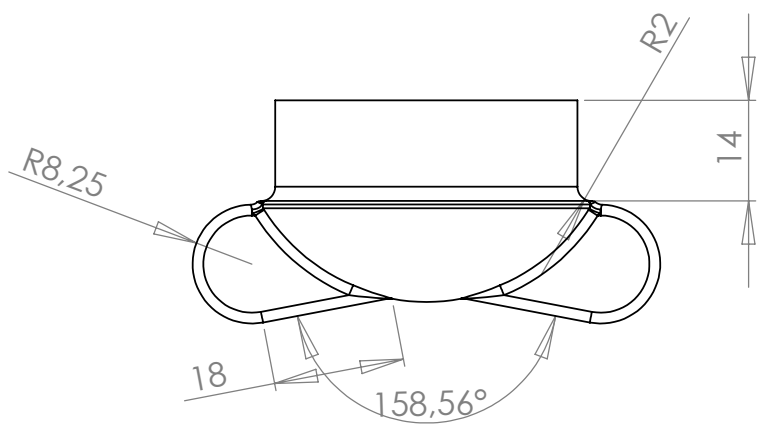
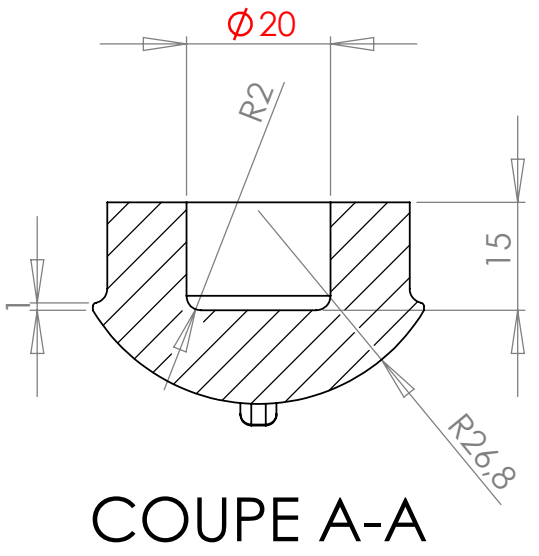
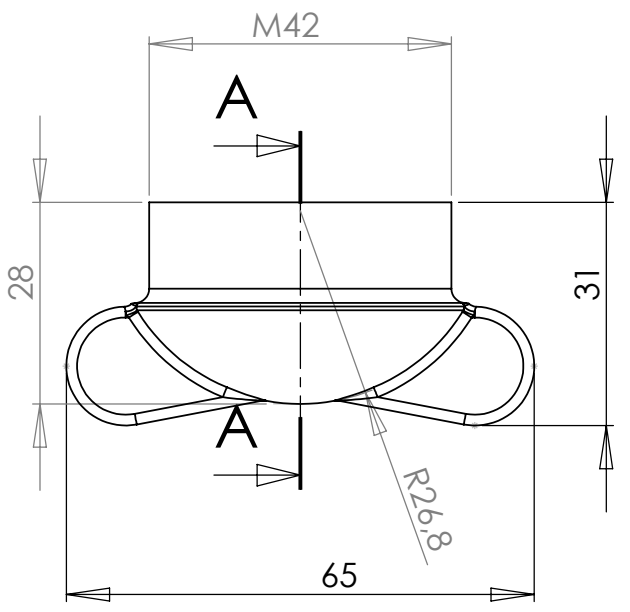
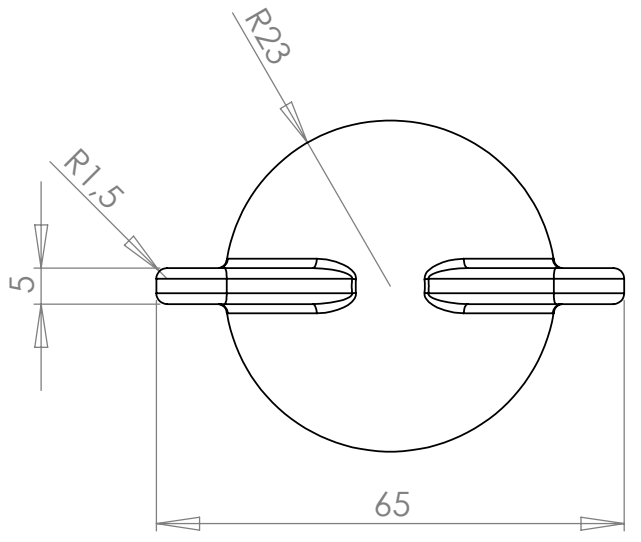
Details :

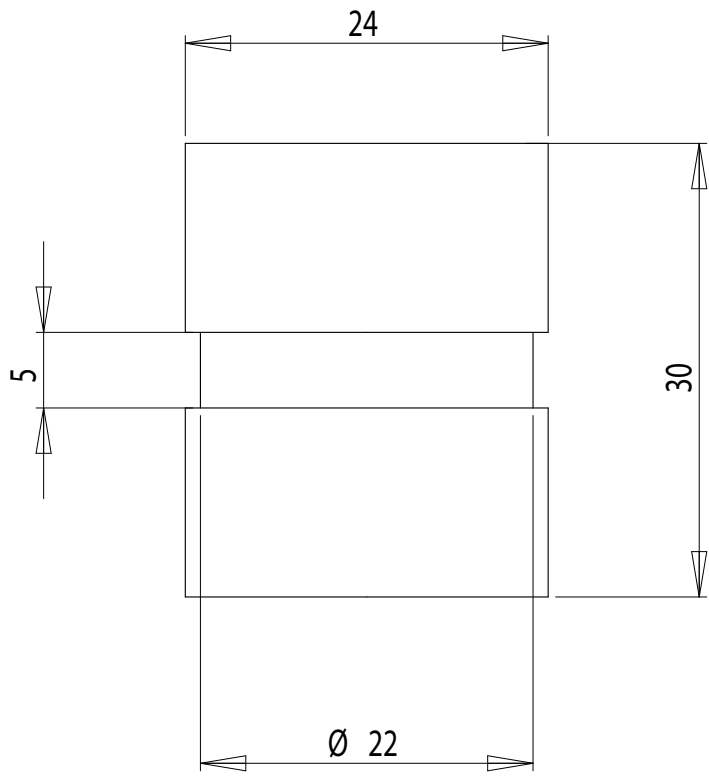
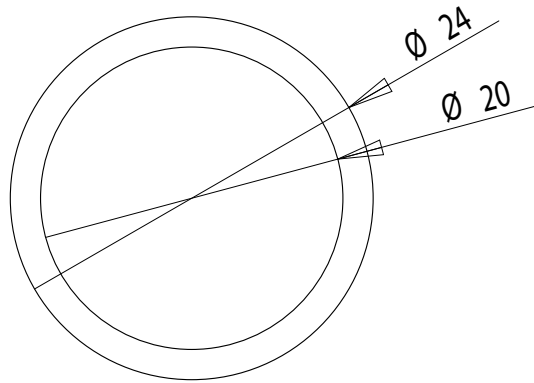
Name : LAMP GRAS
Part : LOCKING PIECE
Date :

Rev : 2

Materials : CHROMED/PAINTED STEEL
Details :

dcw.





dcw.

Name : LAMP GRAS N°215

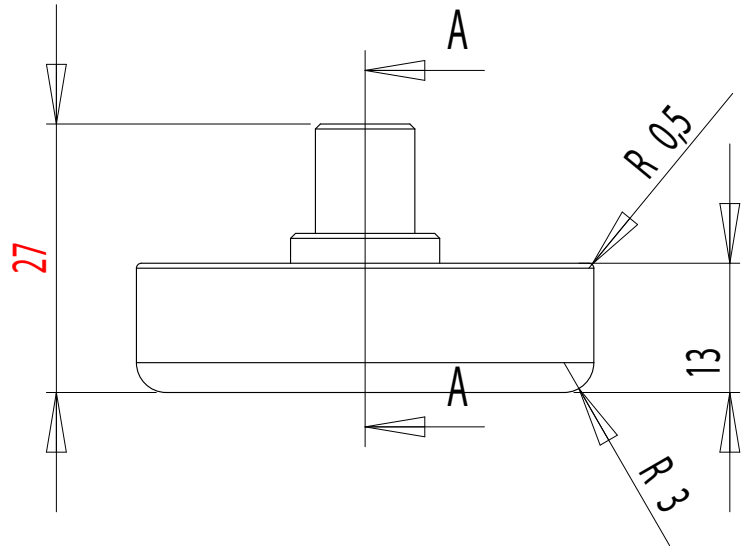
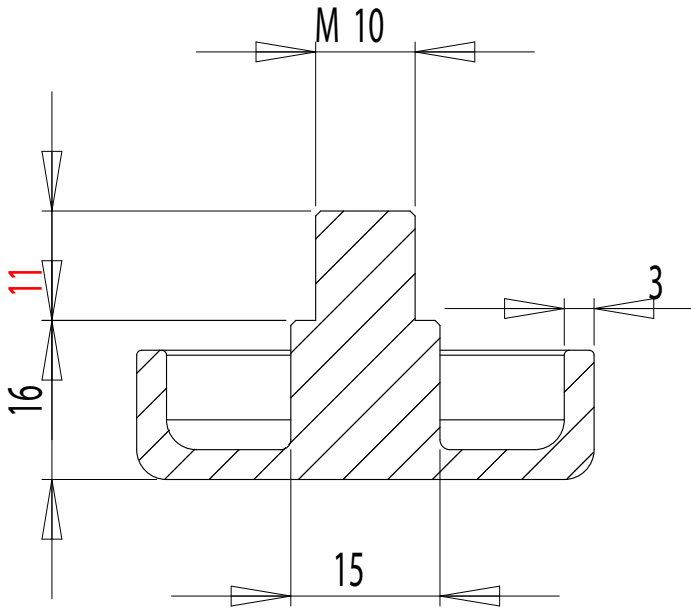
Materials : PLASTIC

Part : PLASTIC TUBE

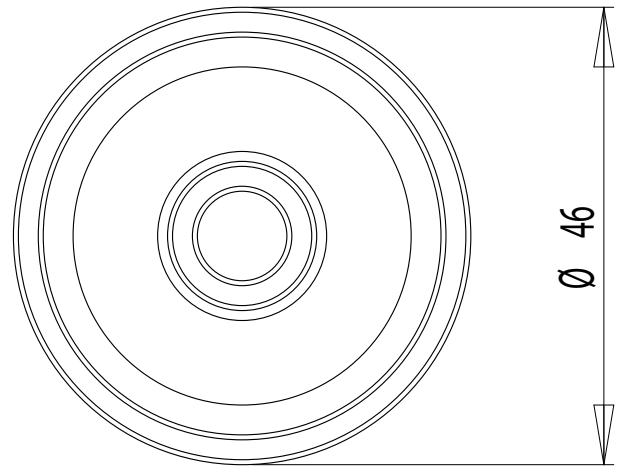
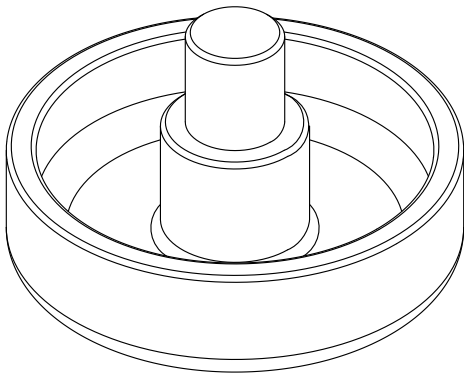
Date :

Rev : 1

Details :



COUPE A-A



dcw.

Name : LAMP GRAS N°210/214/215

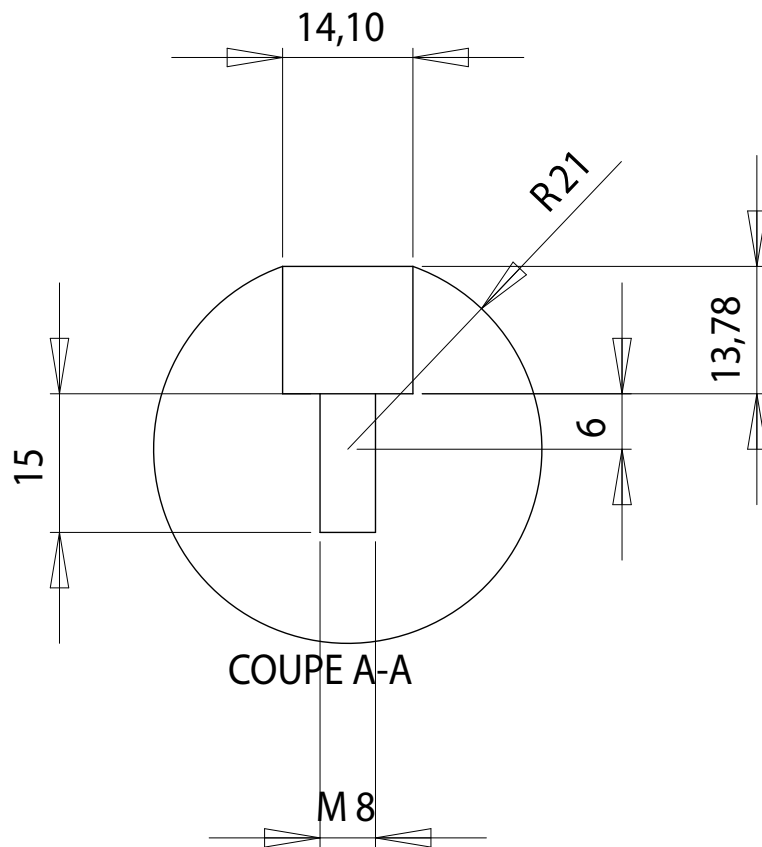
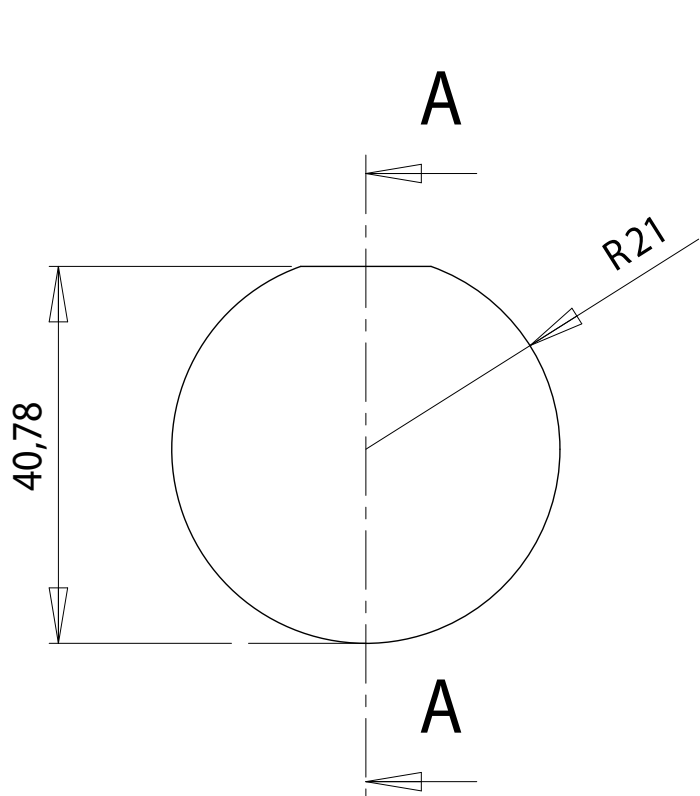
Matériaux : CHROMED/PAINTED STEEL

Part : HANDLE

Date :

Rev : 1

Details :



dcw.

Name : LAMP GRAS

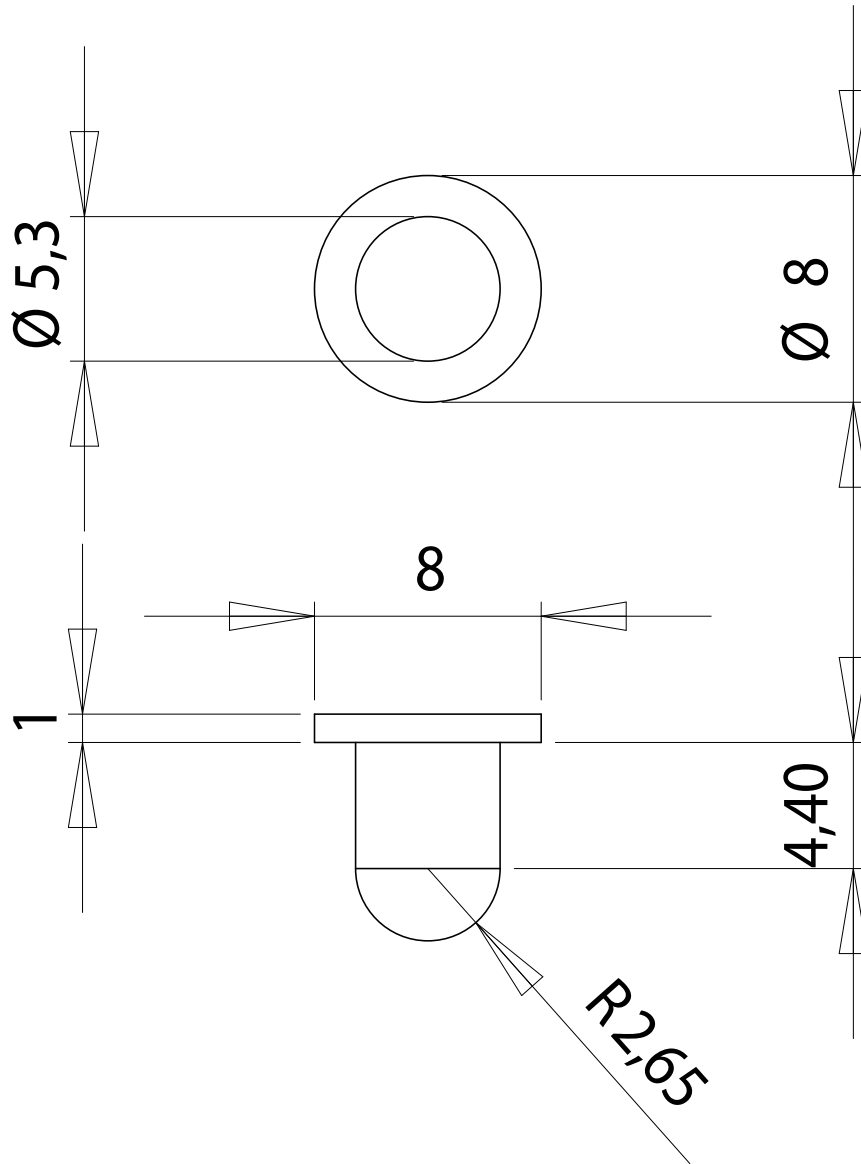
Matériaux : BLACK BAKELITE

Part : SPHERE

Date :

Rev : 1

Details :



dcw.

Name : LAMP GRAS

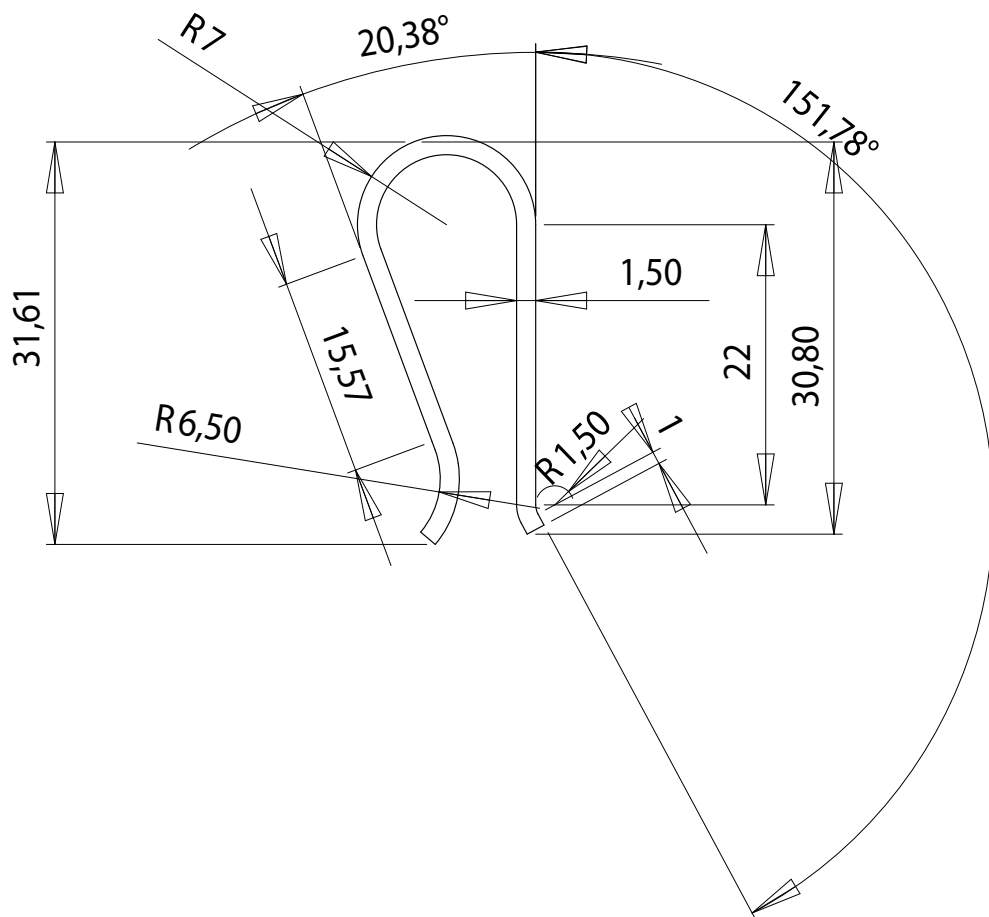
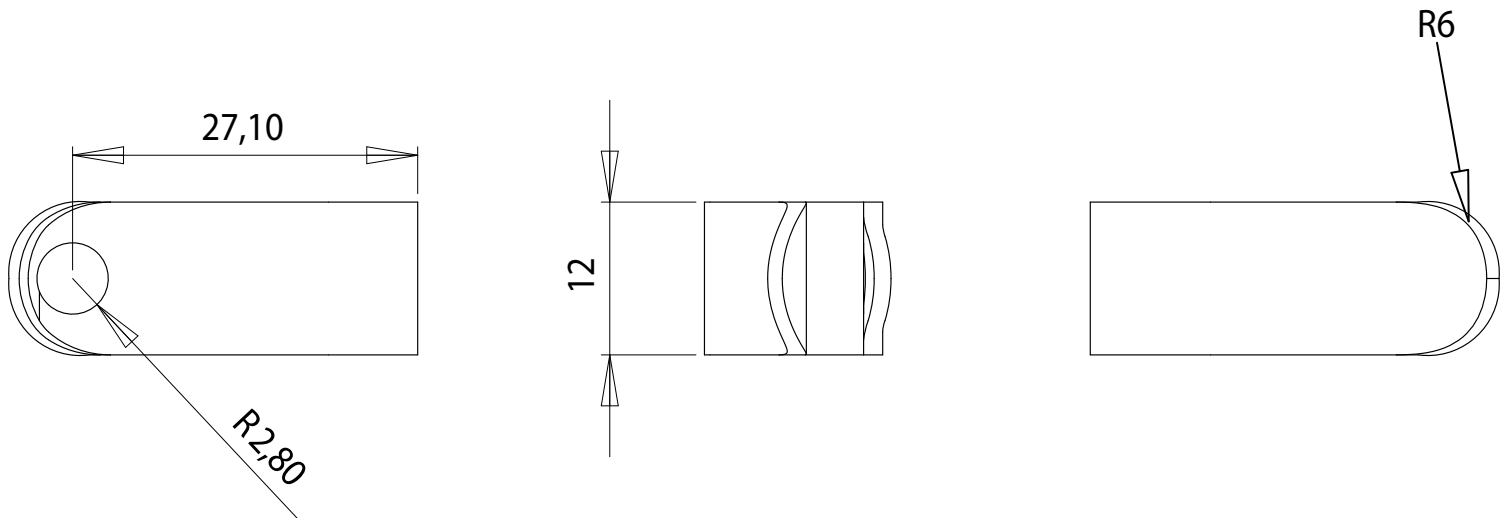
Matériaux : CHROMED STEEL

Part : AXIS

Date :

Rev : 1

Details :



PLIERS SUPPLIED BY DCW

dcw.

Name : LAMP GRAS

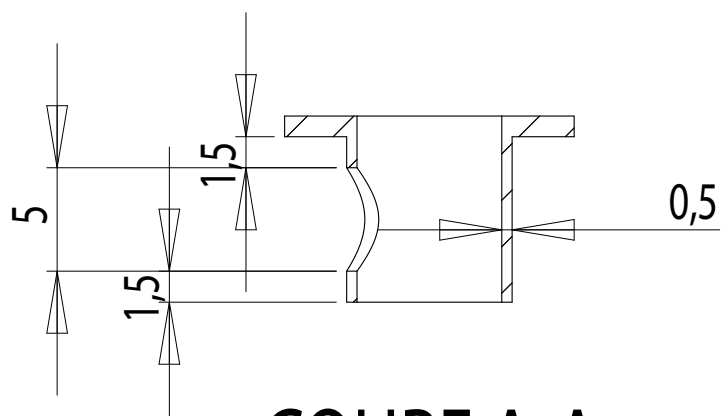
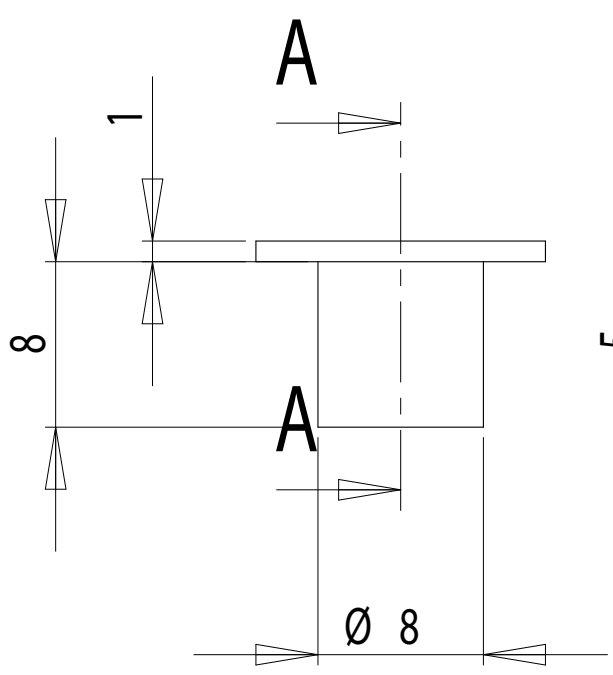
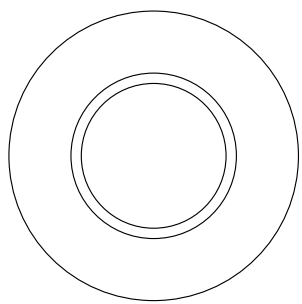
Materials : SPRING CHROMED STEEL

Part : PLIERS

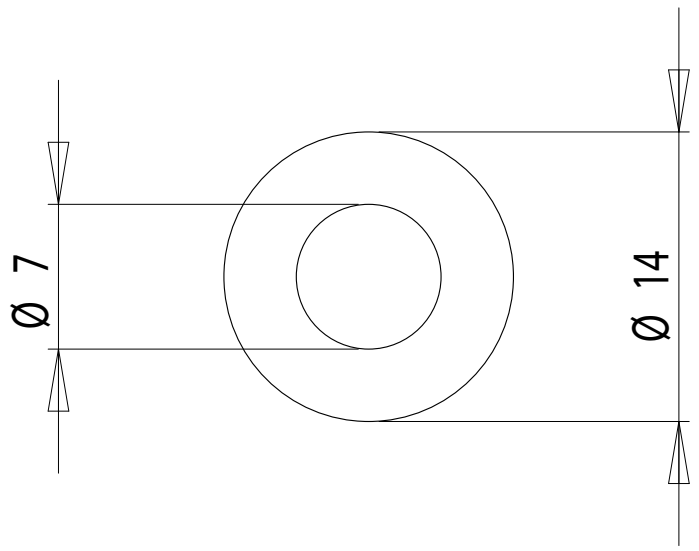
Date :

Rev : 1

Details :



COUPE A-A



dcw.

Name : LAMP GRAS

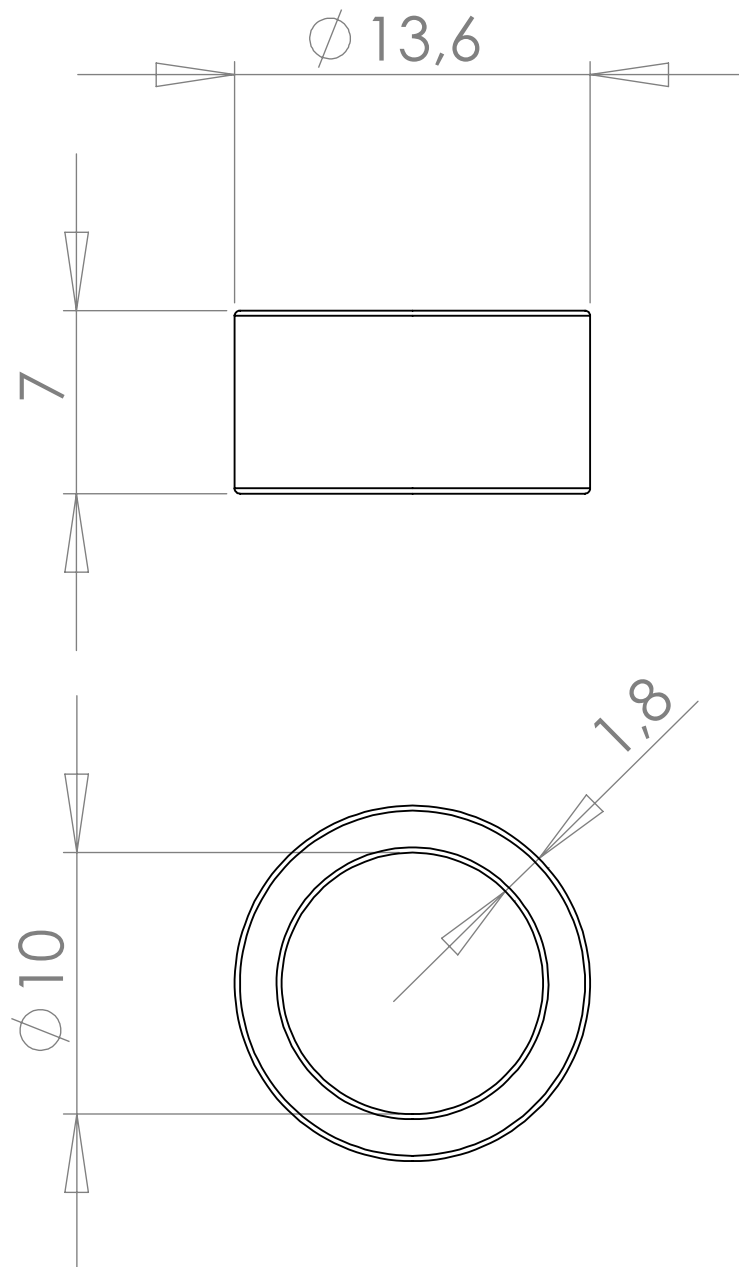
Materials : BLACK PLASTIC

Part : CORD GRIPP

Date :

Rev : 1

Details :



dcw.

Name : LAMP GRAS

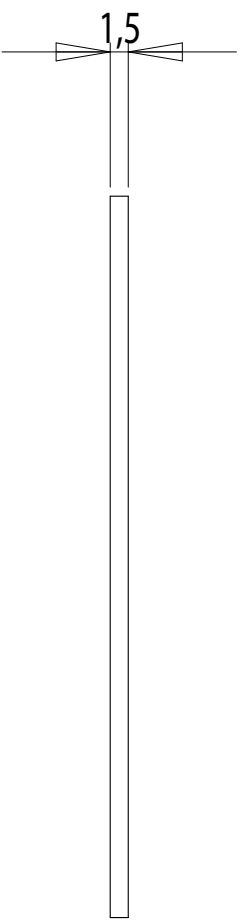
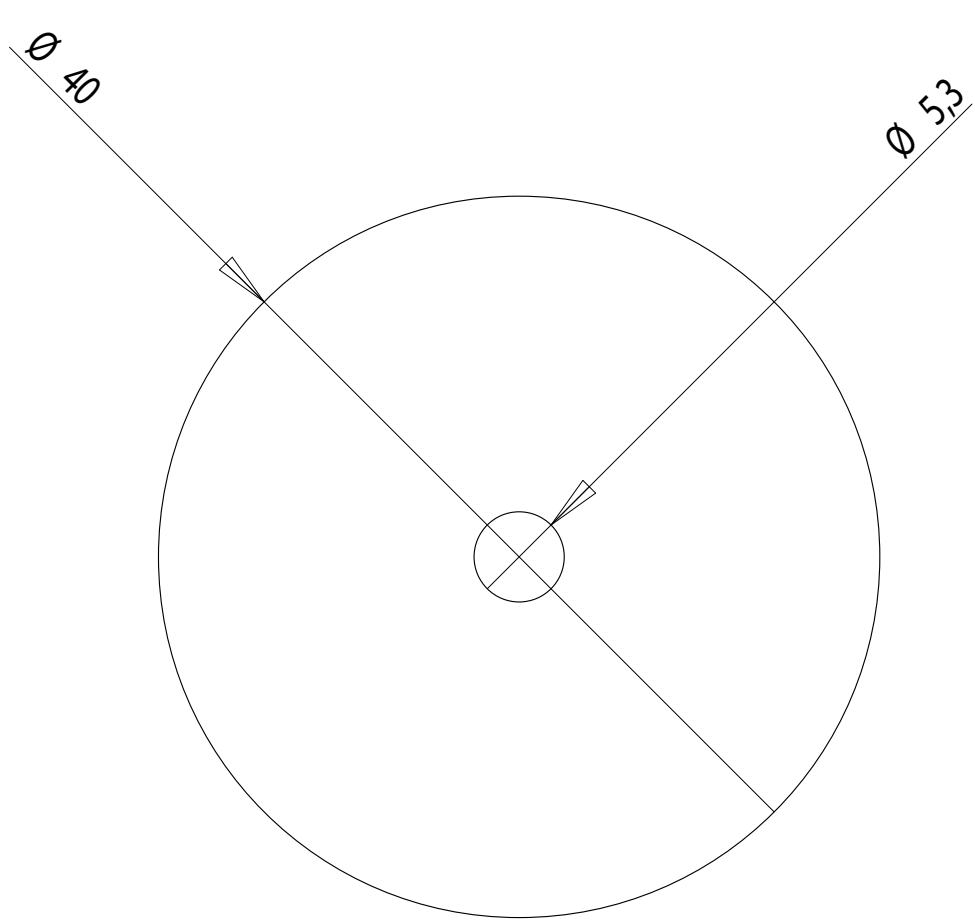
Materials : RUBBER

Part : RUBBER

Date :

Rev : 3

Details :



PLIERS SUPPLIED BY DCW

dcw.

Name : LAMP GRAS

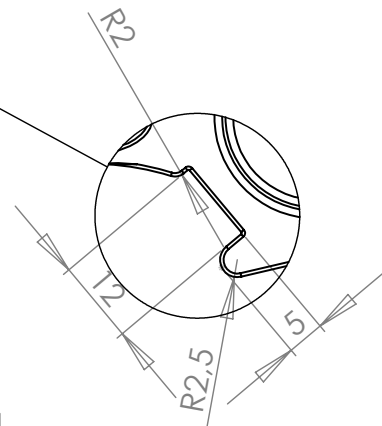
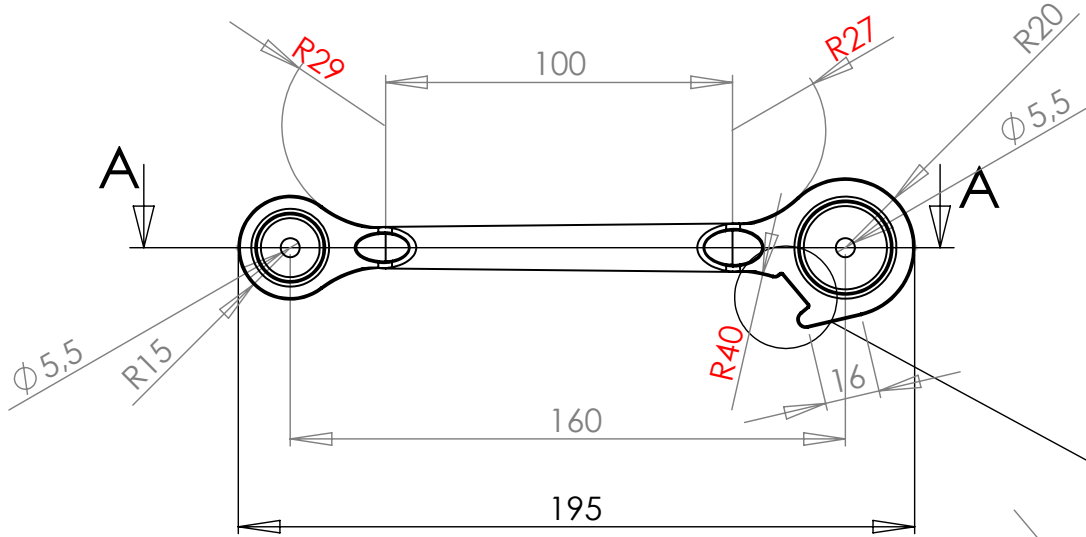
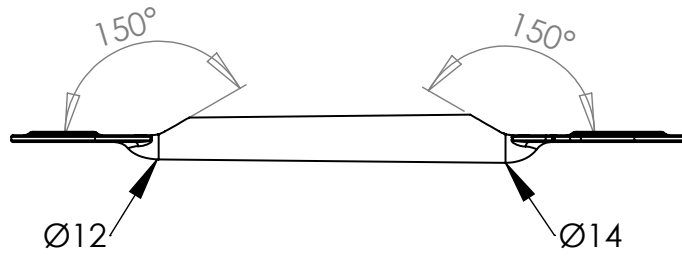
Materials : PLASTIC

Part : PLASTIC WASHER – Ø40

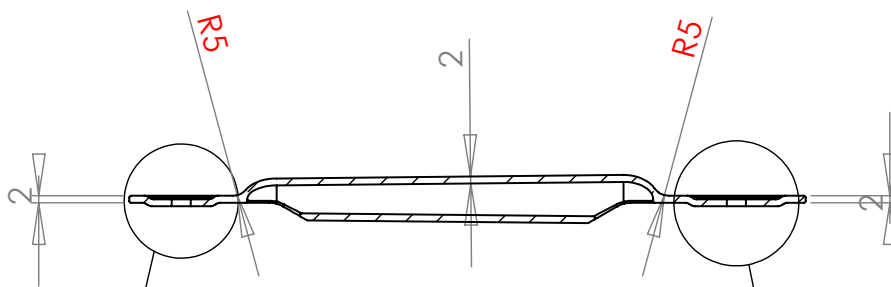
Date :

Rev : 1

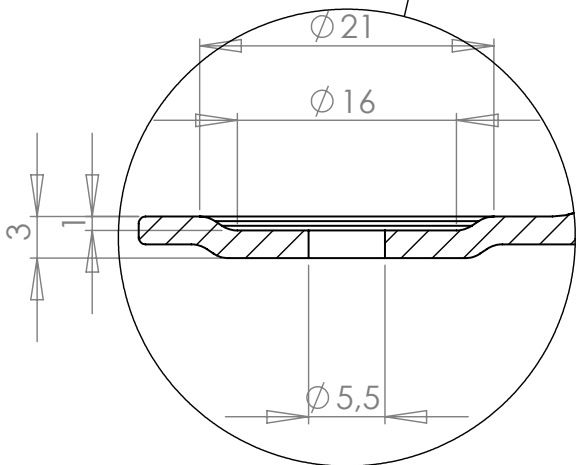
Details :



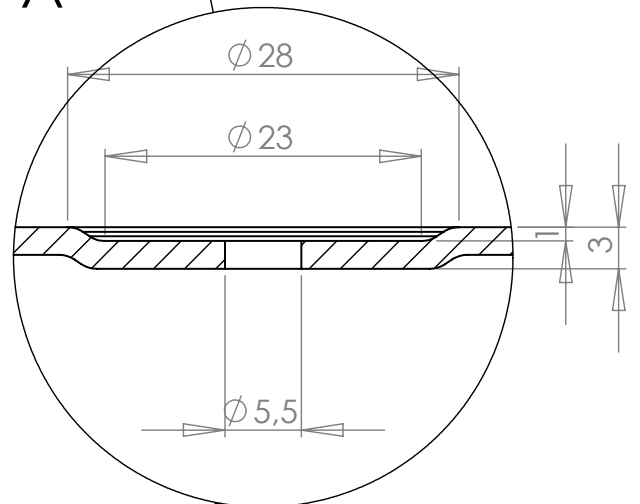
DÉTAIL B



COUPE A-A



DÉTAIL C



DÉTAIL D

dcw.

Name : LAMP GRAS

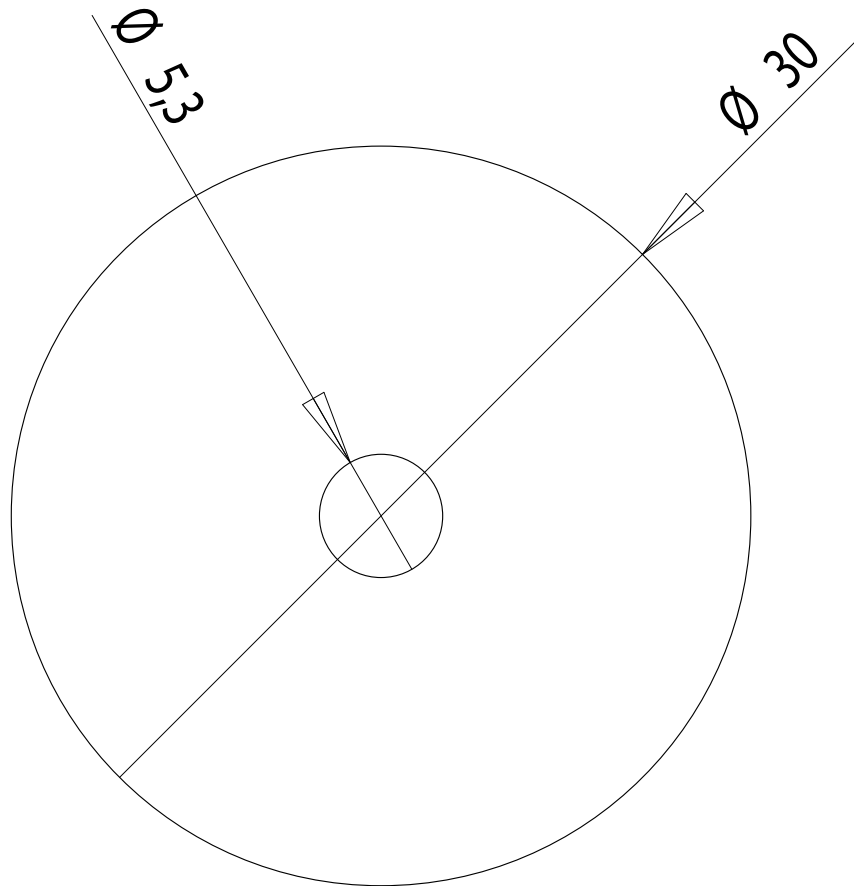
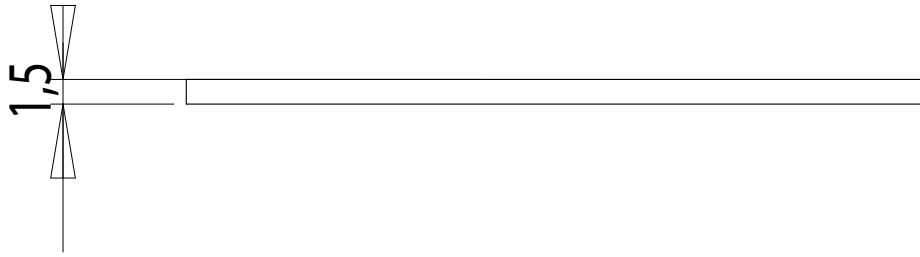
Materials : PAINTED STEEL/CHROMED STEEL

Part : TUBE 2

Date : 10/07/2013

Rev : 2

Details :



PLIERS SUPPLIED BY DCW

dcw.

Name : LAMP GRAS

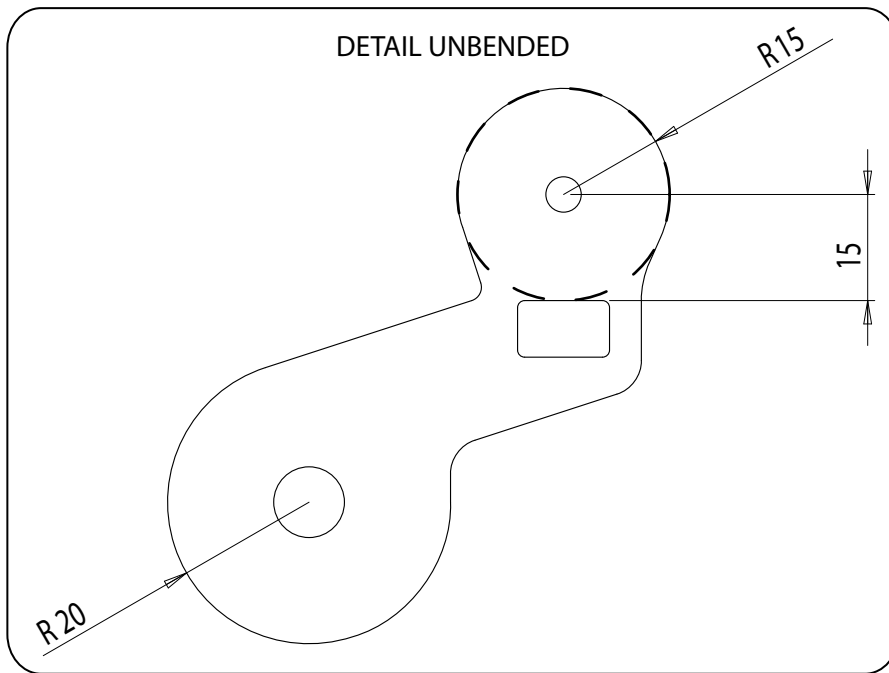
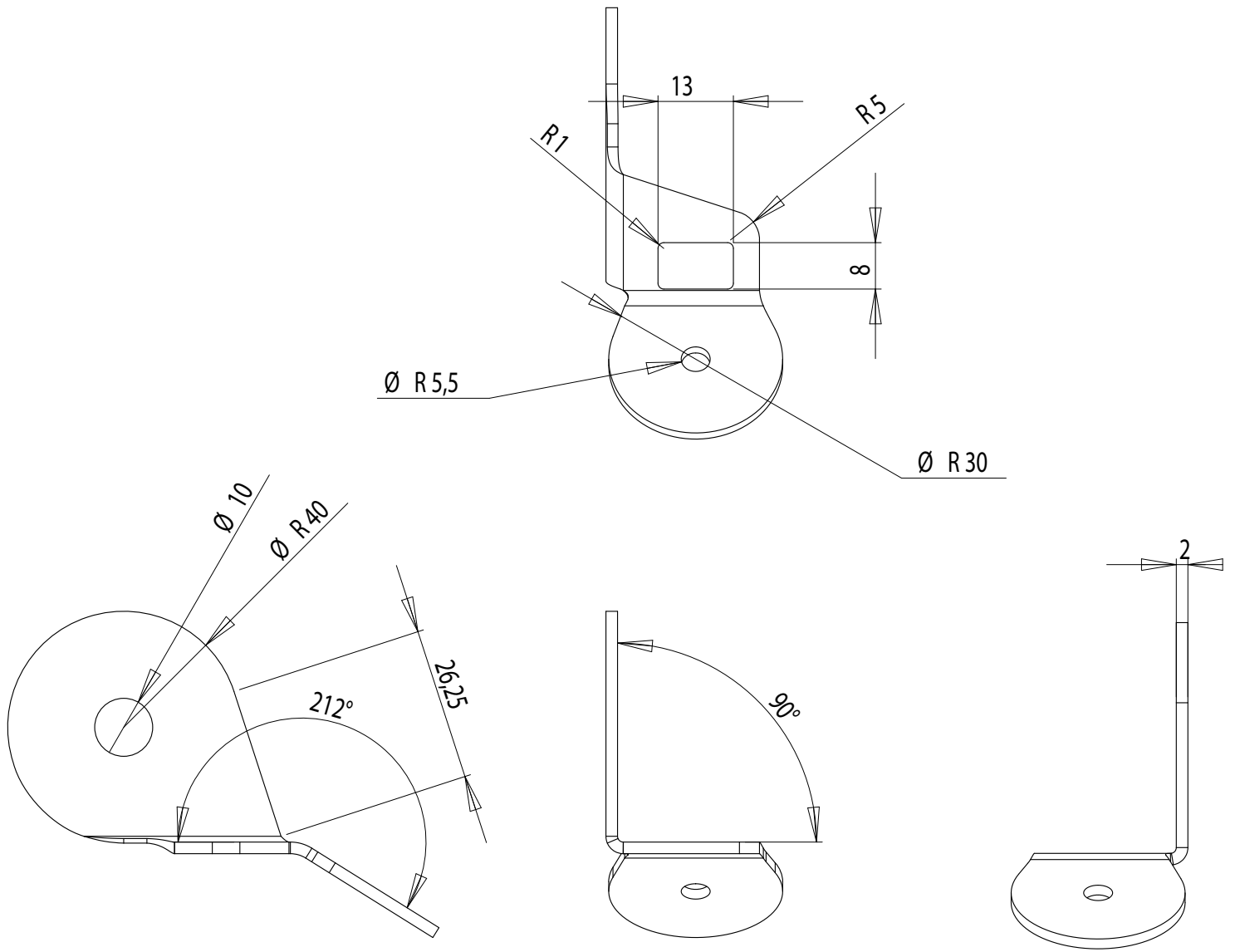
Materials : PLASTIC

Part : PLASTIC WASHER – $\varnothing 30$

Date :

Rev : 1

Details :



dcw.

Name : **LAMP GRAS**

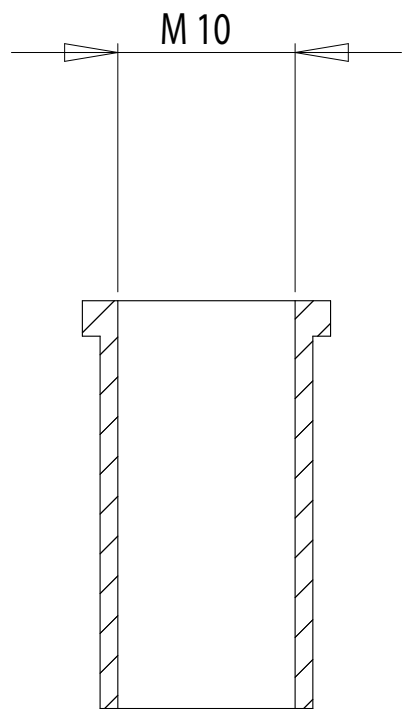
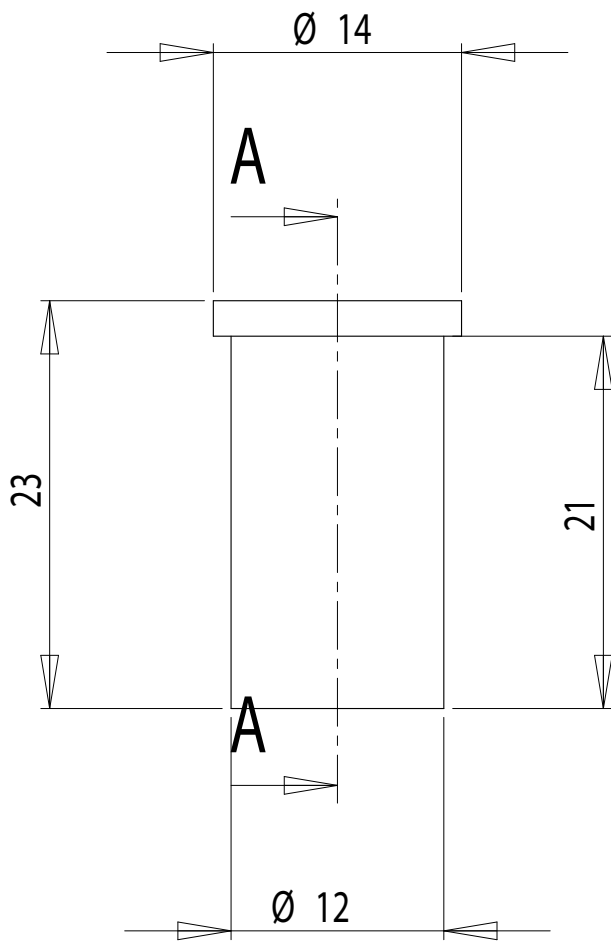
Materials : PAINTED STEEL / CHROMED STEEL

Part : **JUNCTION PIECE**

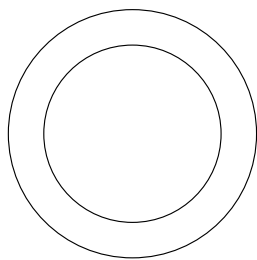
Date :

Rev : 1

Details :



COUPE A-A



dcw.

Name : **LAMP GRAS**

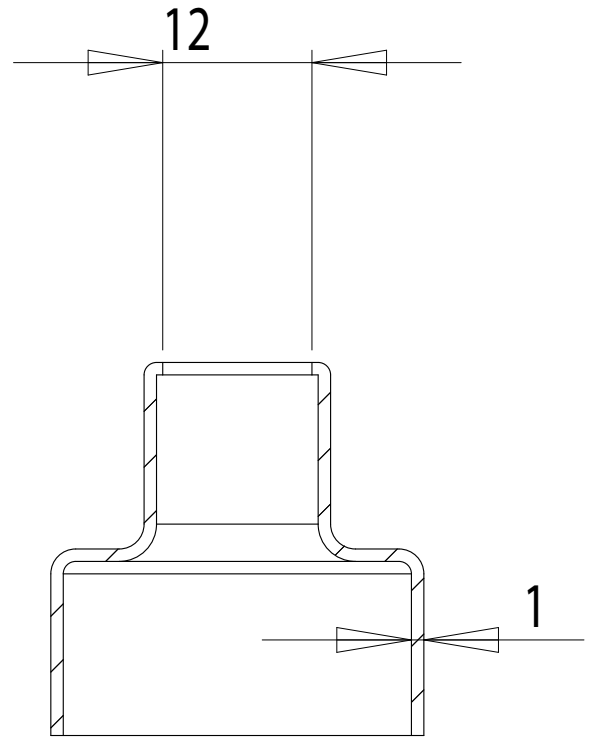
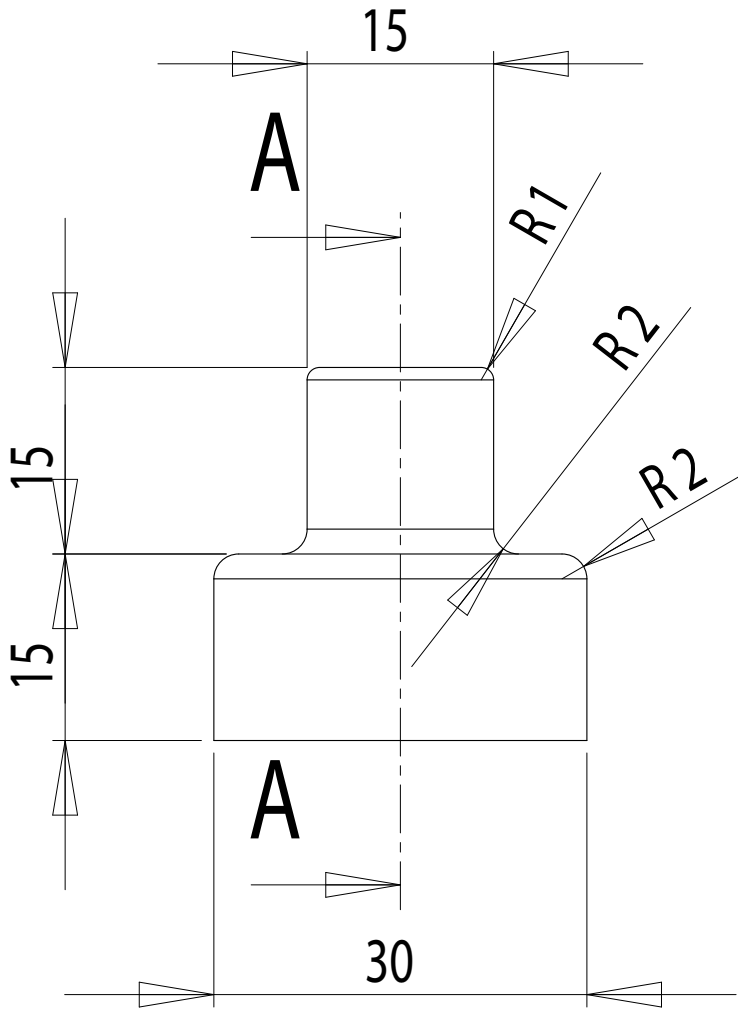
Part : **FIXATION PIECE**

Date :

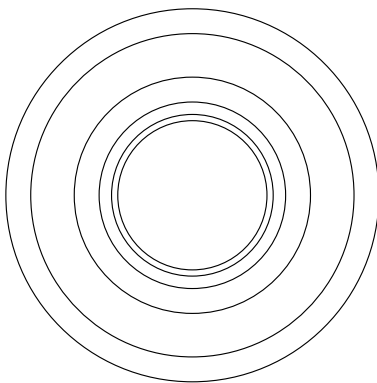
Rev : 1

Materials : PAINTED STEEL / CHROMED STEEL

Details :



COUPE A-A



dcw.

Name : **LAMP GRAS**

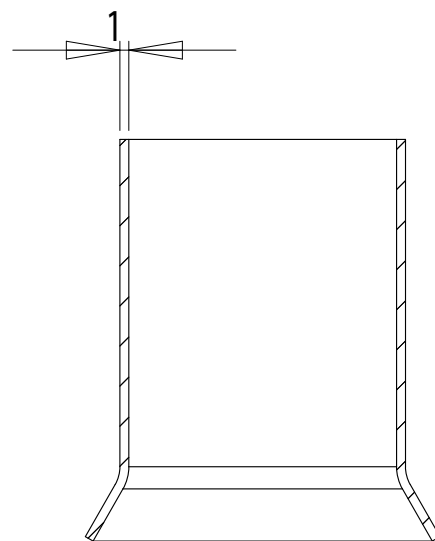
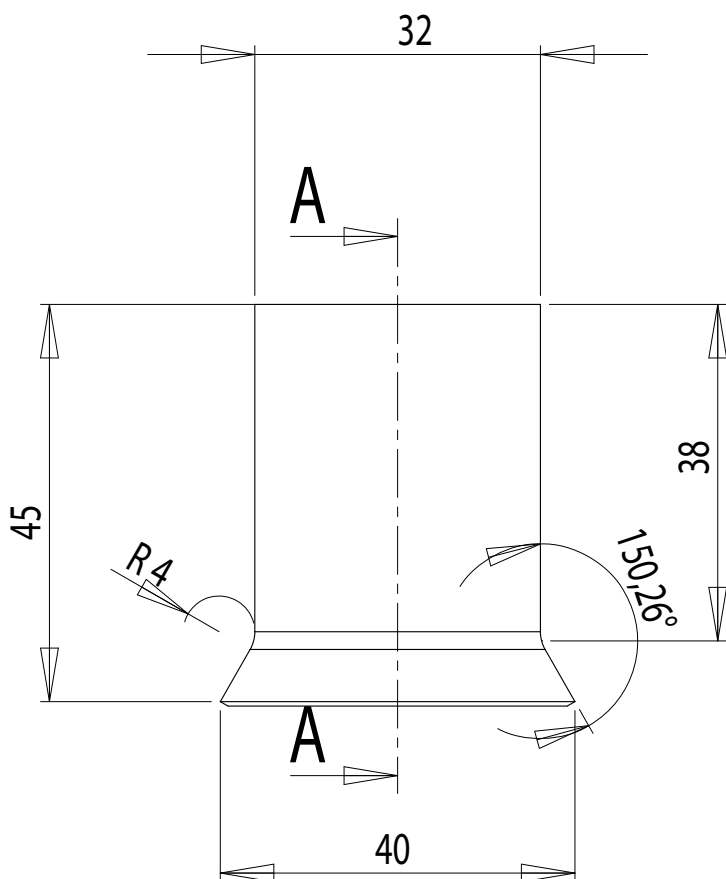
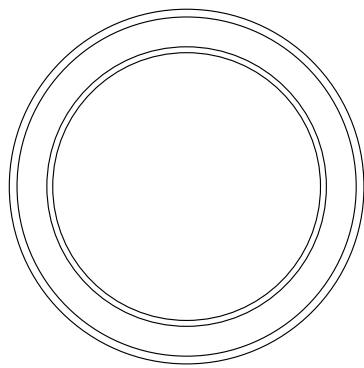
Materials : PAINTED STEEL / CHROMED STEEL

Part : **COVERING PIECE**

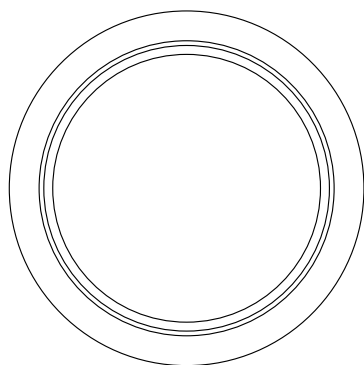
Date :

Rev : 1

Details :



COUPE A-A



dcw.

Name : **LAMP GRAS**

Materials : PAINTED STEEL / CHROMED STEEL

Part : **BULBHOLDER SPACER**

Date :

Rev : 1

Details :

