



Qty	Piece	Finishing			
1	BASE	BLACK SATIN	1	COVERING PIECE	BLACK SATIN
1	VERTICAL TUBE	BLACK SATIN	1	FIXATION PIECE	BLACK SATIN
1	EXTENSION TUBE	BLACK SATIN	1	ROUND SHADE	BLACK OUTSIDE / WHITE INSIDE
1	S TUBE	BLACK SATIN	1	BULBHOLDER SPACER	CHROME
1	L TUBE	BLACK SATIN	1	BULBHOLDER SCREW	CHROME
1	HANDLE	BLACK SATIN	1	BULBHOLDER	
1	HANDLE WASHER	BLACK SATIN	3	M3 x 4 SCREW	BLACK
1	TUBE 1	BLACK	3	M10 x 4 NUT	BLACK
1	PLASTIC WASHER Ø40	BLACK SATIN	1	M4 x 5 SCREW	BLACK
1	PLASTIC WAHSER Ø30	RED	1	M5 x 10 PLASTIC SCREW	BLACK
1	PLIERS	RED	2	M4 x 3 SCREW	BLACK
2	TUBE 2	BLACK SATIN	3	M6 x 7 SCREW	BLACK
1	JUNCTION PIECE	BLACK SATIN	1	THREAD 10X100	

dcw.

Name : LAMP GRAS N°312 BL-SAT

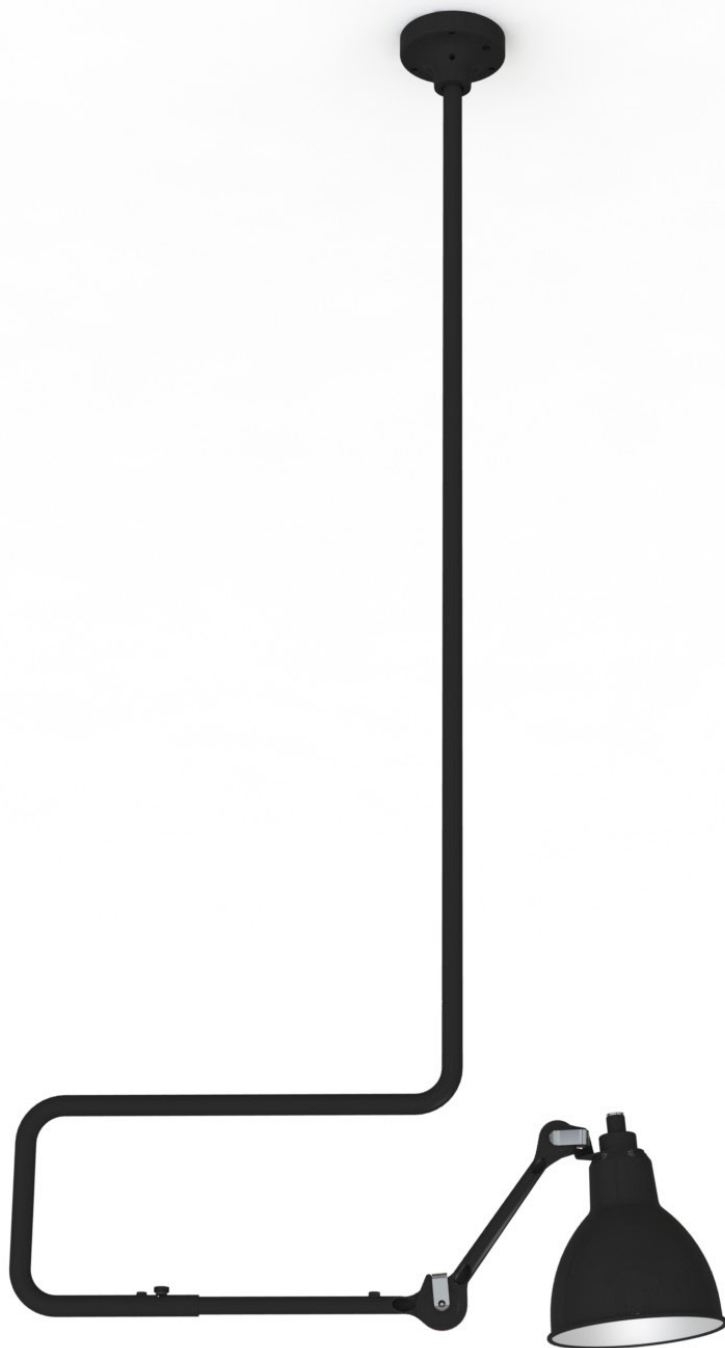
Matérials :

Part :

Date :

Rev : 1

Details : E14 - 11w ; Arditi métal bulbholder ; Black fabric wire



Qty	Piece	Finishing			
1	BASE	BLACK SATIN	1	COVERING PIECE	BLACK SATIN
1	VERTICAL TUBE	BLACK SATIN	1	FIXATION PIECE	BLACK SATIN
1	EXTENSION TUBE	BLACK SATIN	1	ROUND SHADE	BLACK OUTSIDE / WHITE INSIDE
1	S TUBE	BLACK SATIN	1	BULBHOLDER SPACER	CHROME
1	L TUBE	BLACK SATIN	1	BULBHOLDER SCREW	CHROME
1	HANDLE	BLACK SATIN	1	BULBHOLDER	
1	HANDLE WASHER	BLACK SATIN	3	M3 x 4 SCREW	BLACK
1	TUBE 1	BLACK	3	M10 x 4 NUT	BLACK
1	PLASTIC WASHER Ø40	BLACK SATIN	1	M4 x 5 SCREW	BLACK
1	PLASTIC WAHSER Ø30	RED	1	M5 x 10 PLASTIC SCREW	BLACK
1	PLIERS	RED	2	M4 x 3 SCREW	BLACK
2	TUBE 2	BLACK SATIN	3	M6 x 7 SCREW	BLACK
1	JUNCTION PIECE	BLACK SATIN	1	THREAD 10X100	

dcw.

Name : LAMP GRAS N°312 BL-SAT

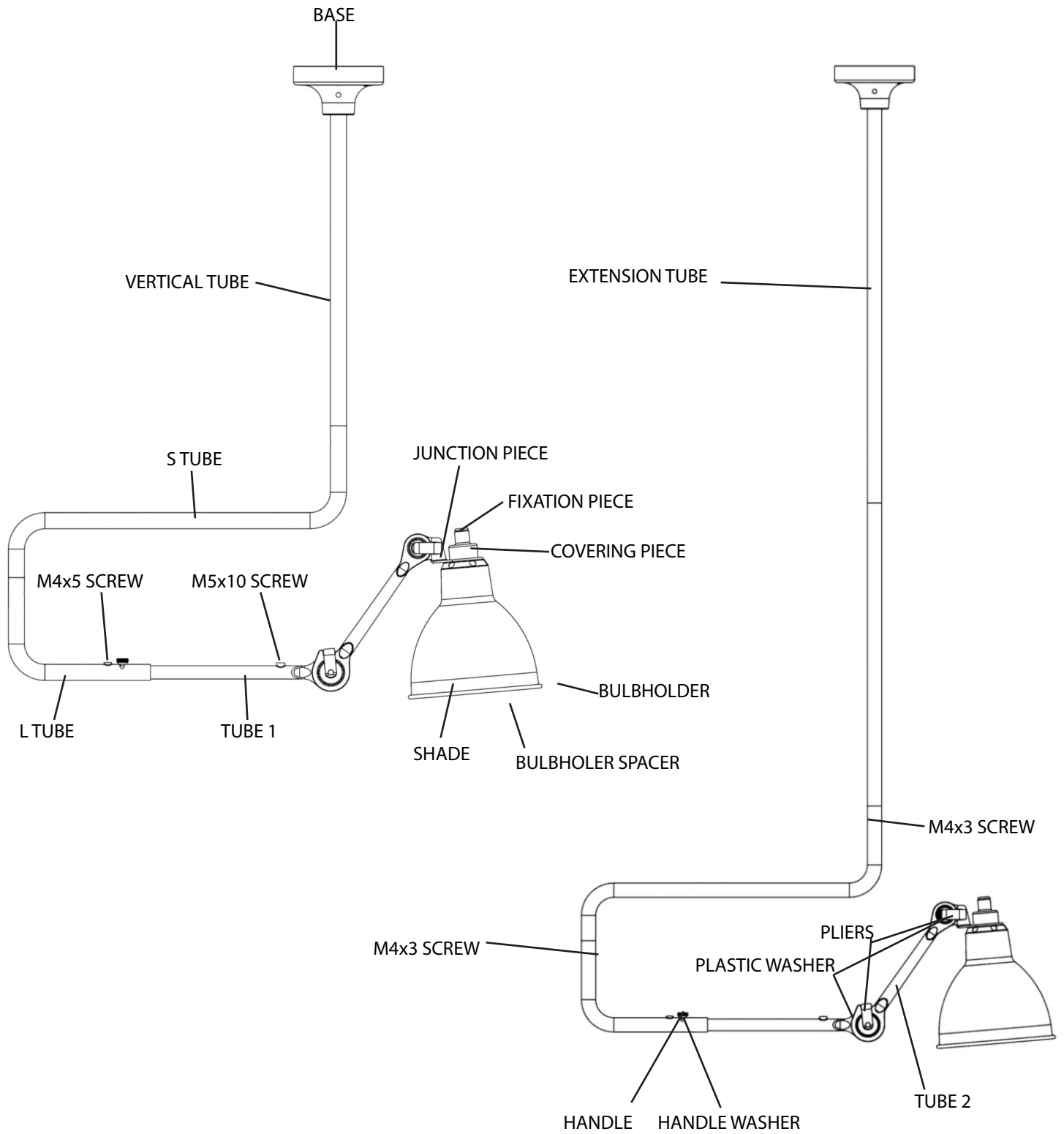
Matérials :

Part :

Date :

Rev : 1

Details : E14 - 11w ; Arditi métal bulbholder ; Black fabric wire



dcw.

Name : LAMP GRAS N°312

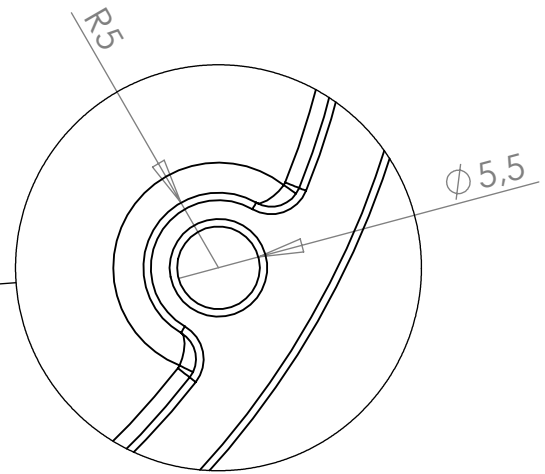
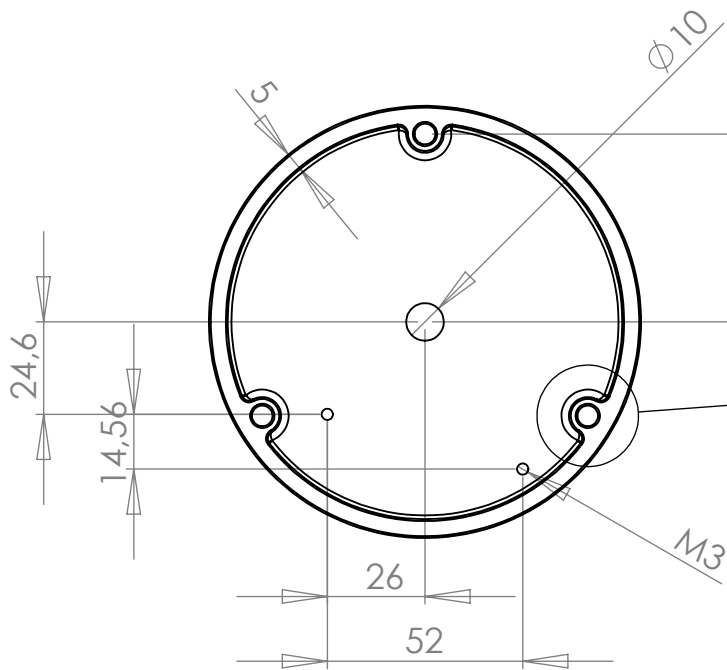
Matérials :

Part : ELEMENTS

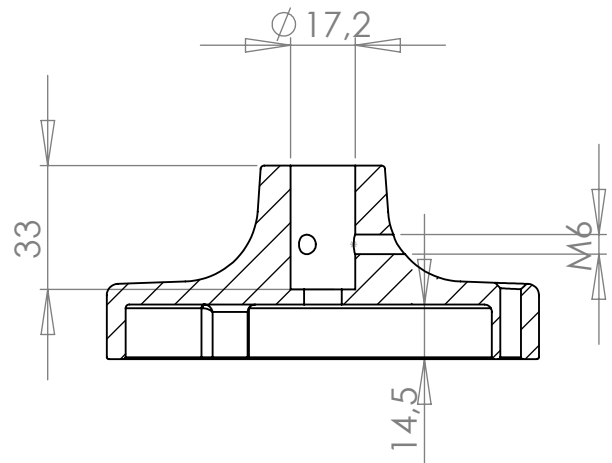
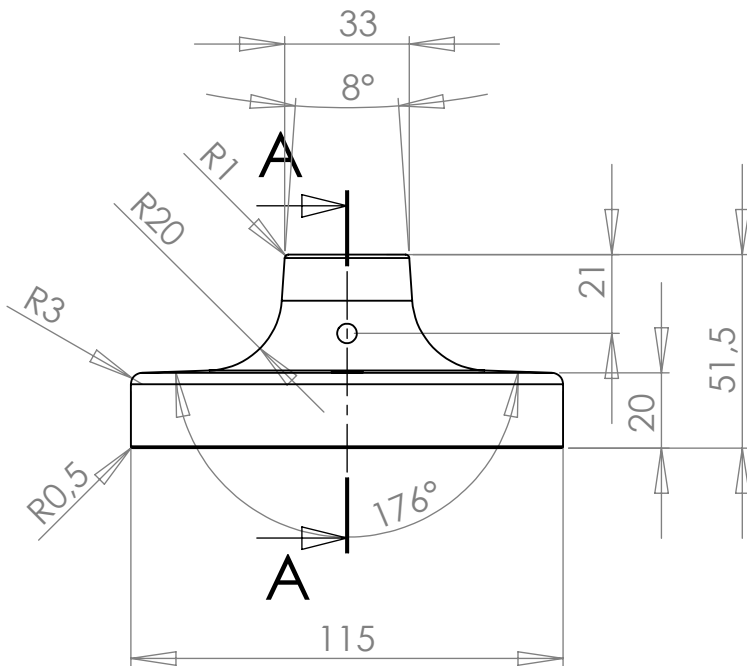
Date :

Rev : 1

Details :



DÉTAIL B



COUPE A-A

dcw.

Name : LAMP GRAS N°312

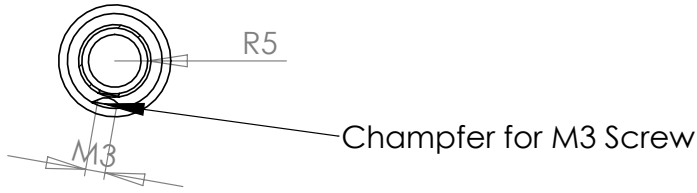
Matériaux : PAINTED STEEL/CHROMED STEEL

Part : BASE

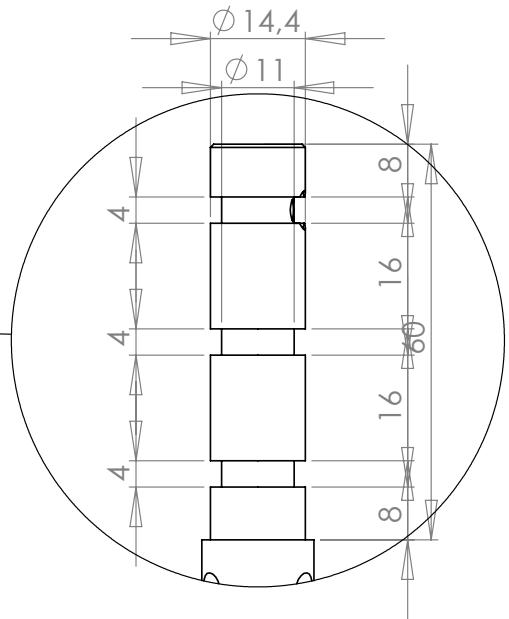
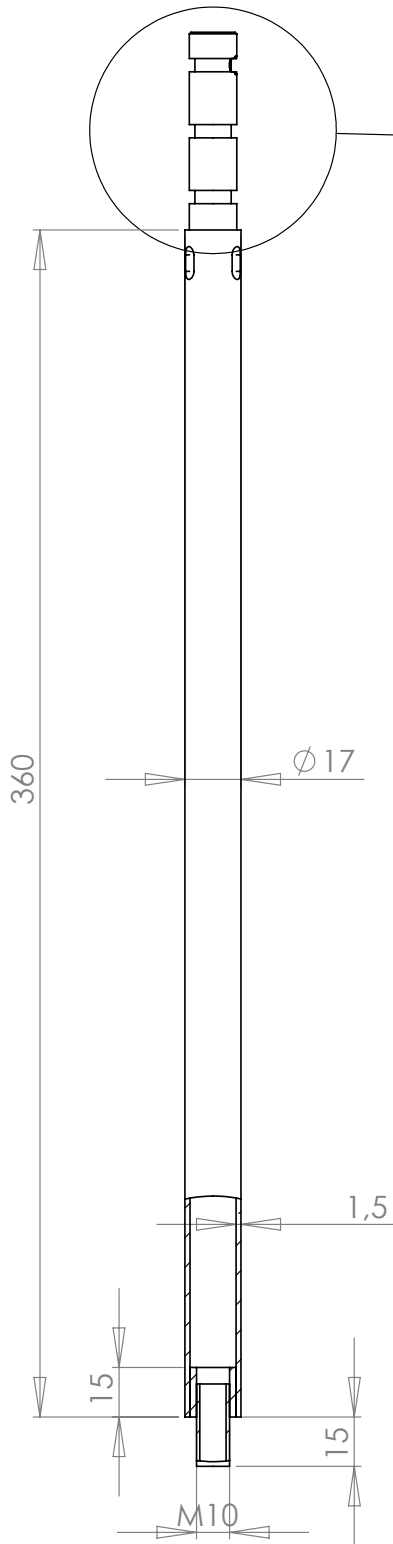
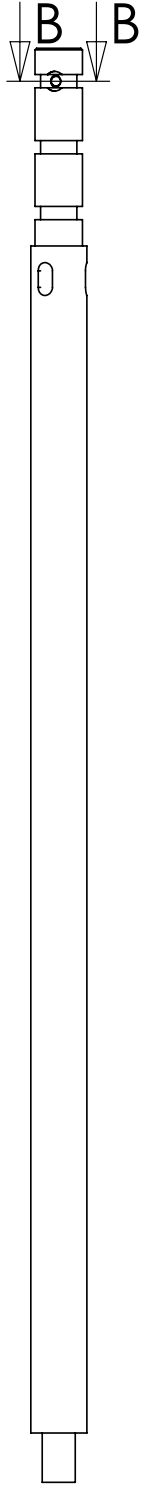
Date :

Rev : 1

Details :



COUPE B-B



DÉTAIL A

dcw.

Name : LAMP GRAS N°312

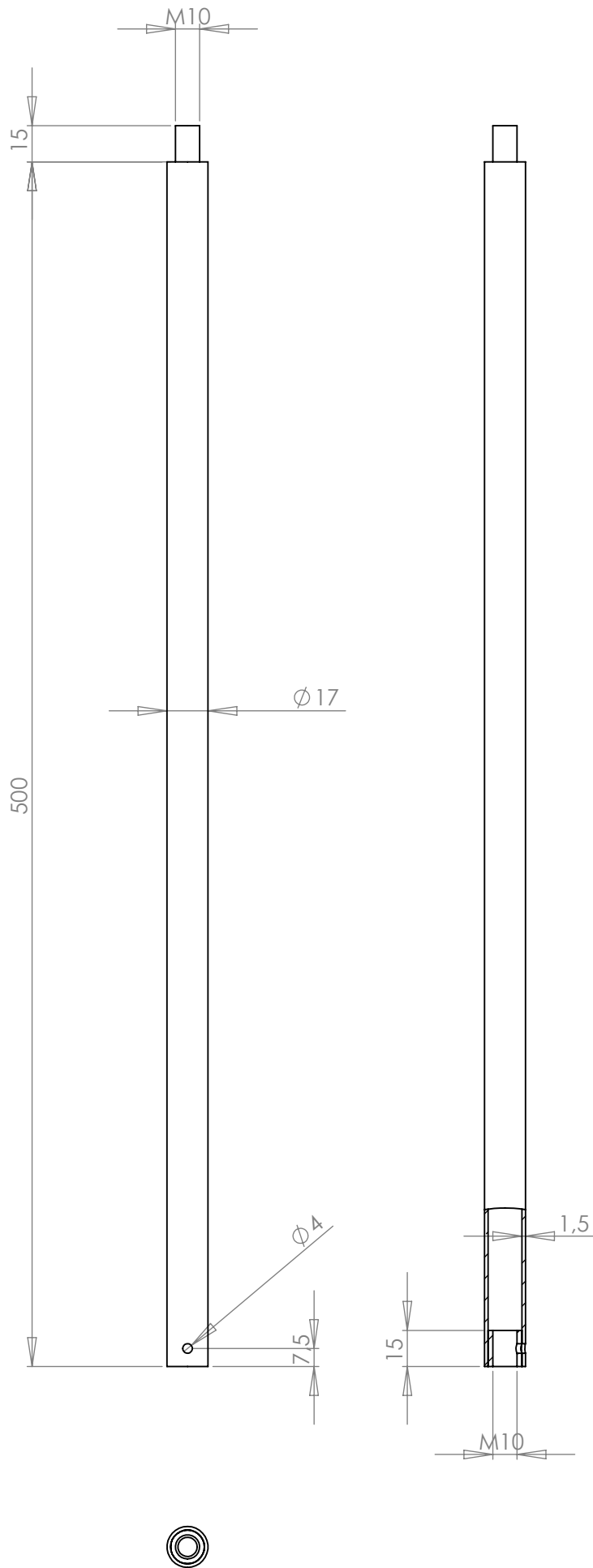
Matériaux : PAINTED STEEL/CHROMED STEEL

Part : VERTICAL TUBE

Date :

Rev : 4

Details :



dcw.

Name : LAMP GRAS N°312

Materials : PAINTED STEEL/CHROMED STEEL

Part : EXTENSION TUBE

Date :

Rev : 4

Details :

Date :

Part : S TUBE

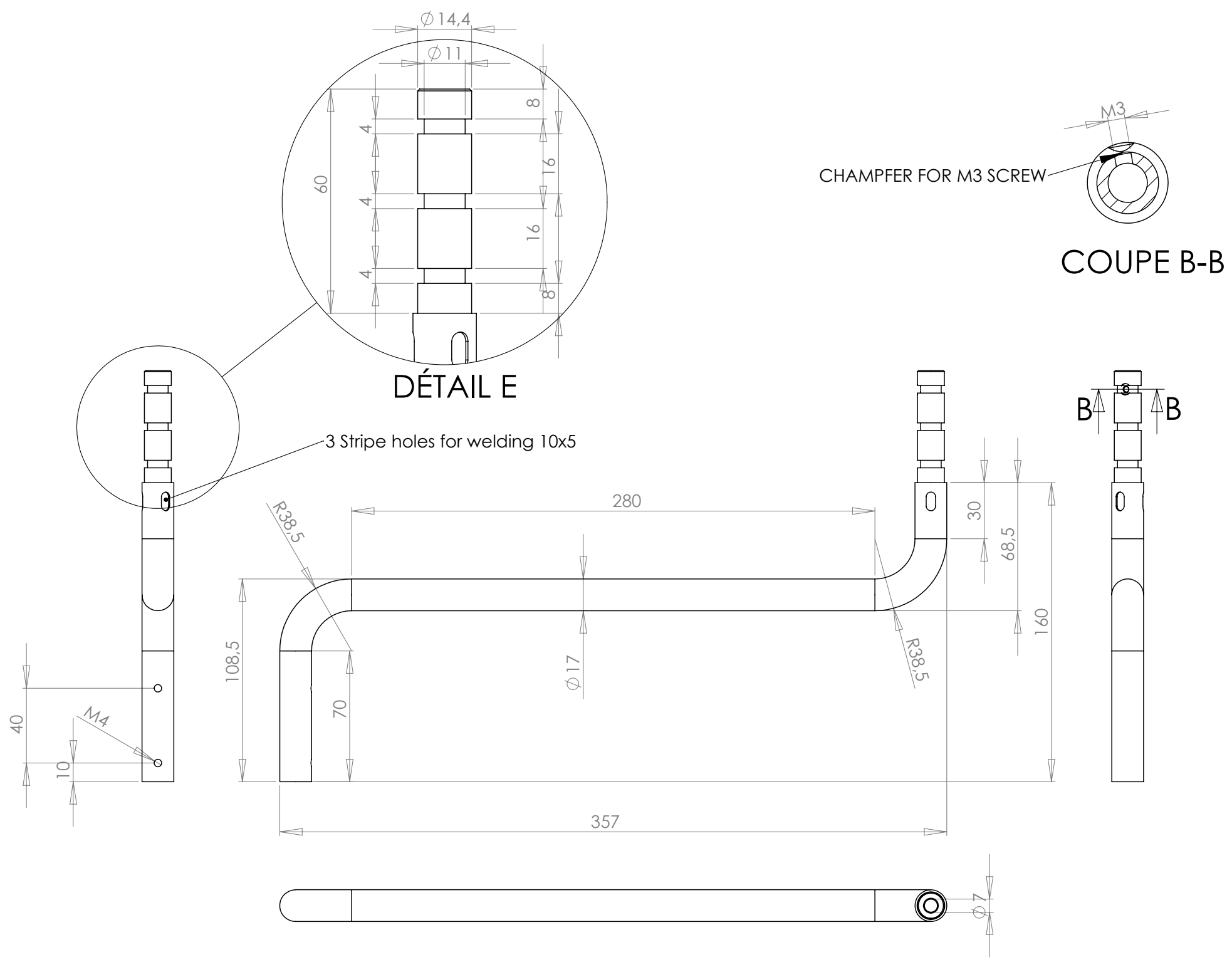
Name : LAMP GRAS N°312

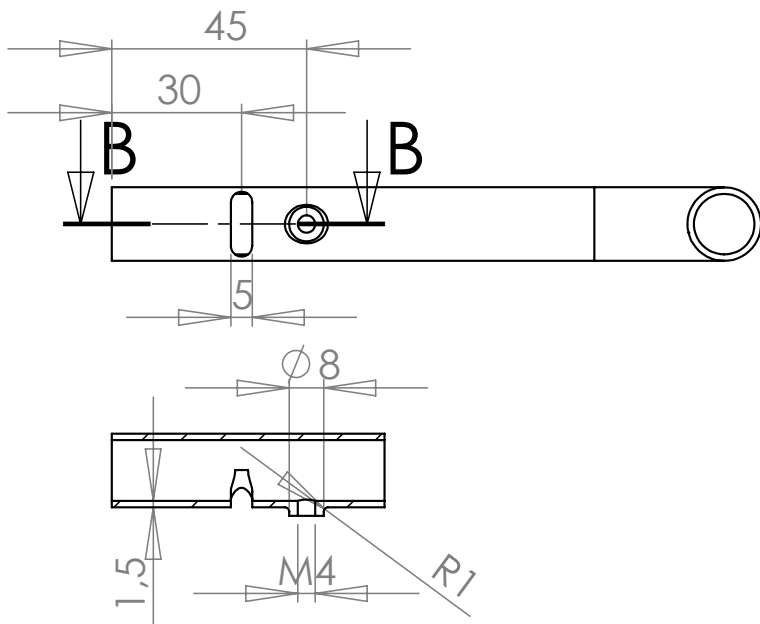
Rev : 2

Details :

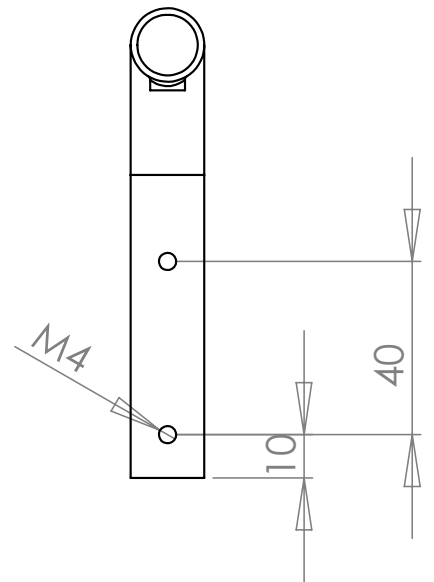
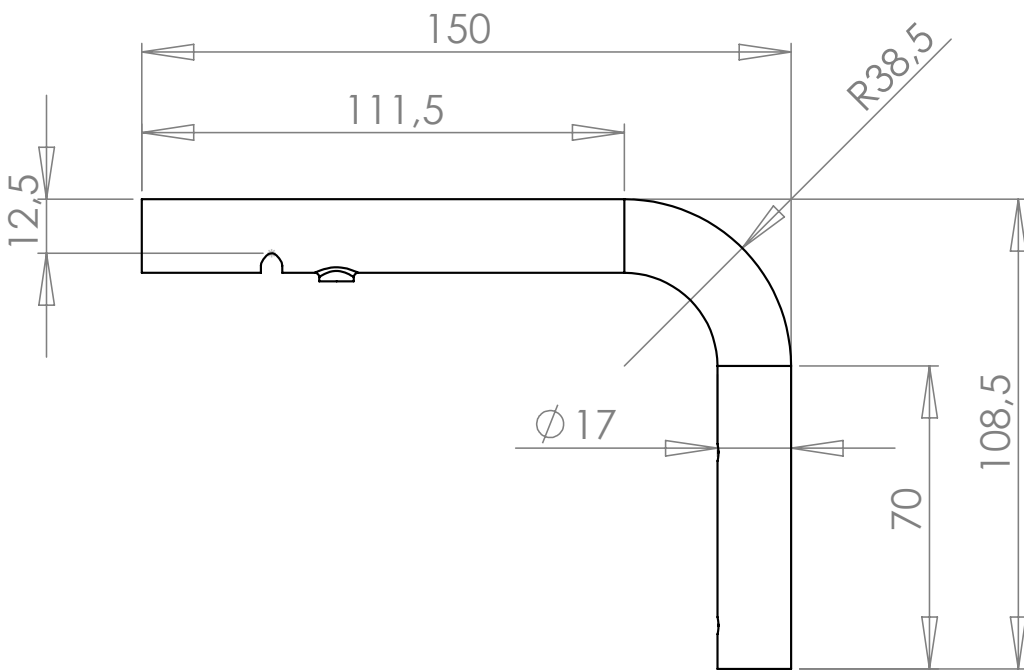
Materials : PAINTED STEEL/CHROMED STEEL

dcw.





COUPE B-B



dcw.

Name : LAMP GRAS N°312

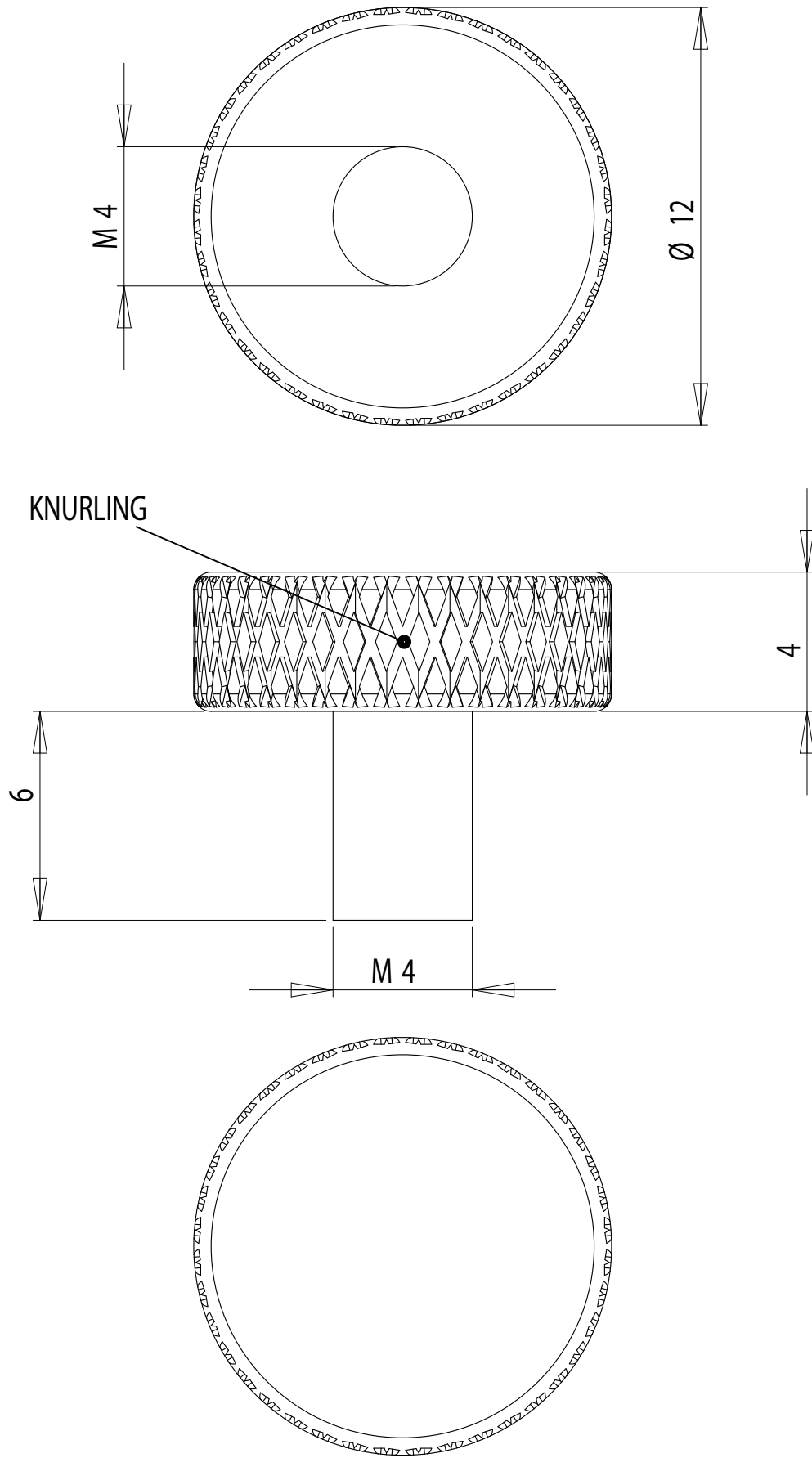
Matériaux : PAINTED STEEL/CHROMED STEEL

Part : L TUBE – 150

Date :

Rev : 2

Details :



dcw.

Name : **LAMP GRAS**

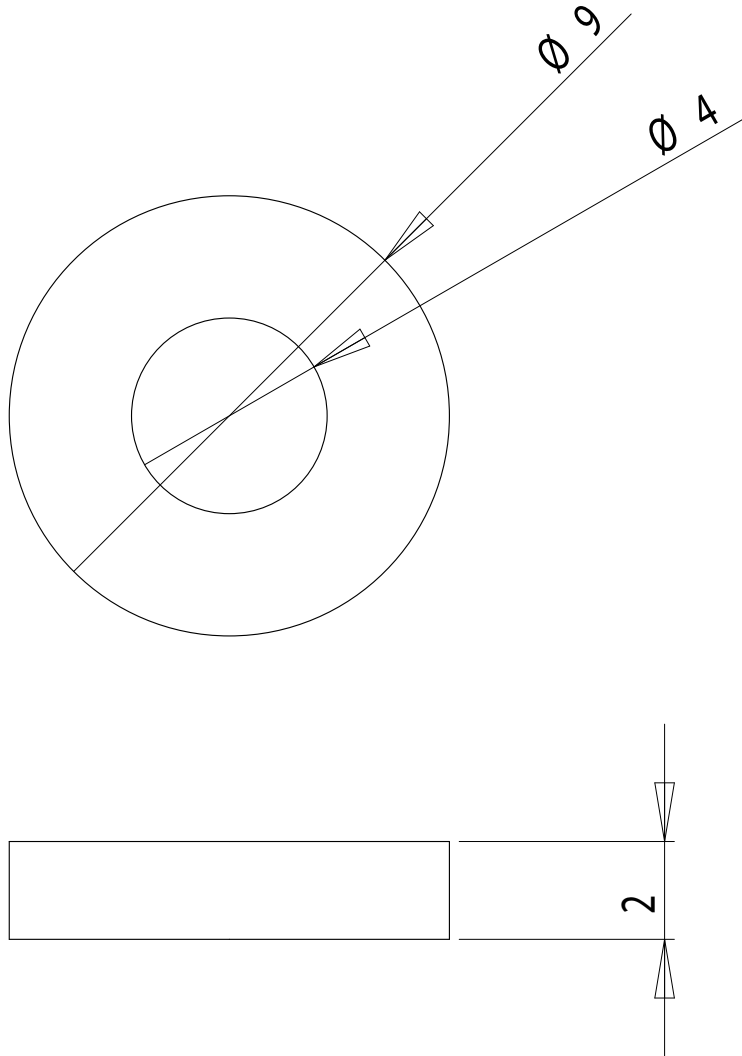
Materials : PAINTED STEEL

Part : **BREAKING HANDLE**

Date :

Rev : 1

Details :



dcw.

Name : **LAMP GRAS**

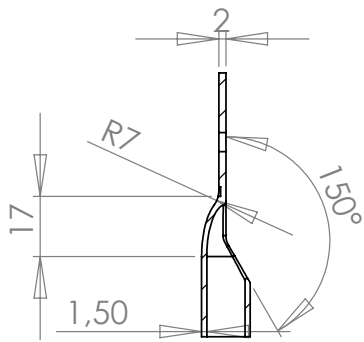
Materials : PLASTIC

Part : **HANDLE WASHER**

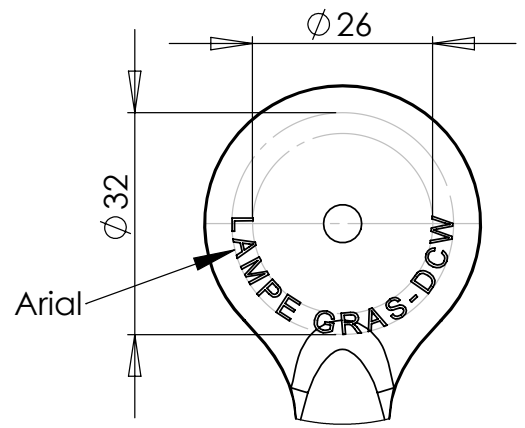
Date :

Rev : 1

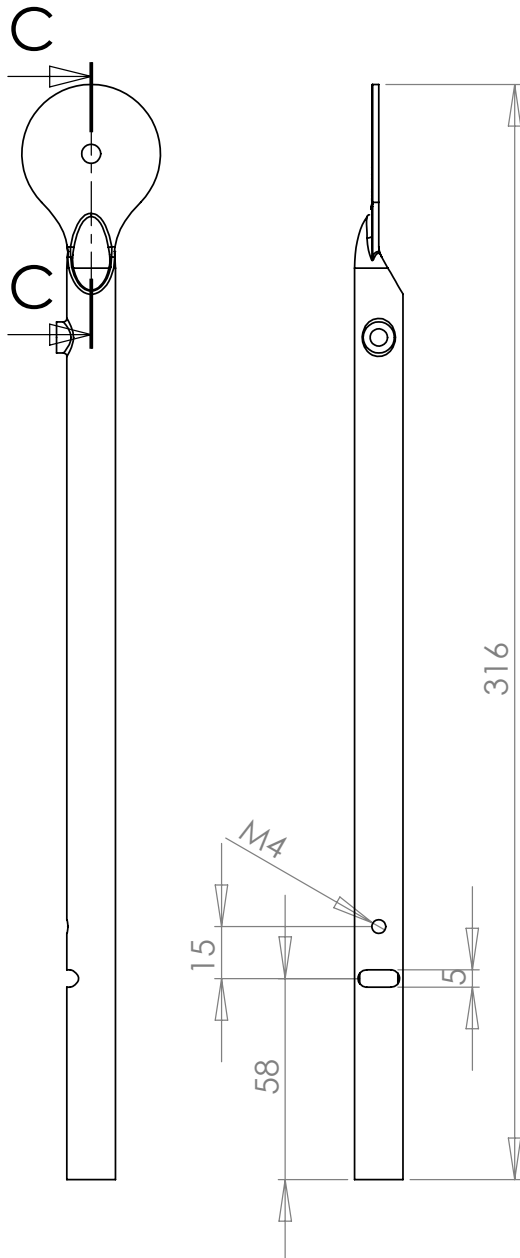
Details :



COUPE C-C



DÉTAIL B



DÉTAIL A

dcw.

Name : LAMP GRAS

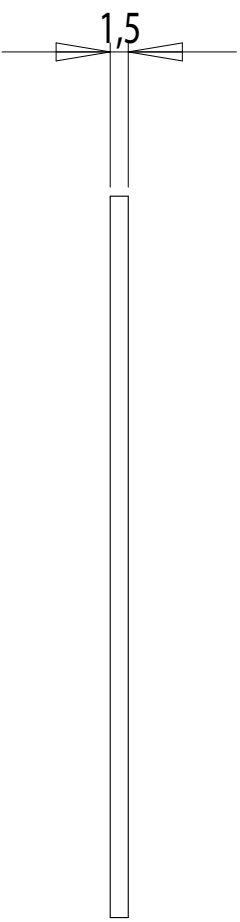
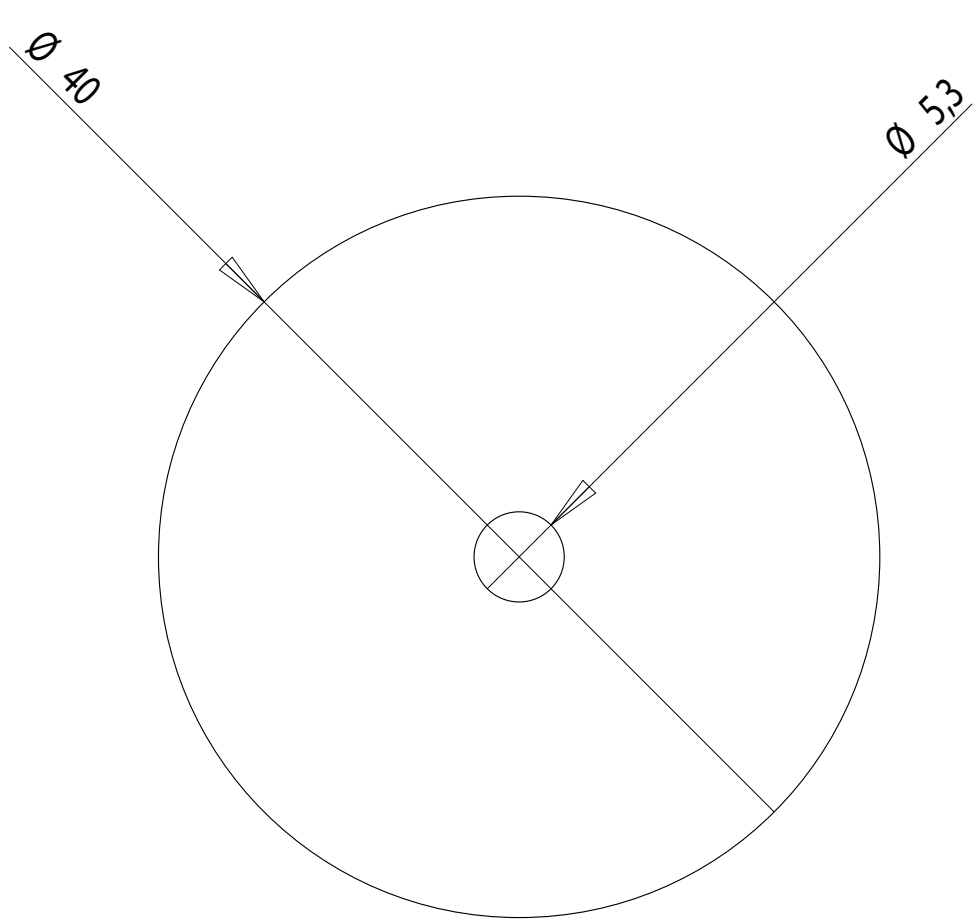
Matériaux : PAINTED STEEL/CHROMED STEEL

Part : TUBE 1 – 316

Date :

Rev : 1

Details :



PLIERS SUPPLIED BY DCW

dcw.

Name : LAMP GRAS

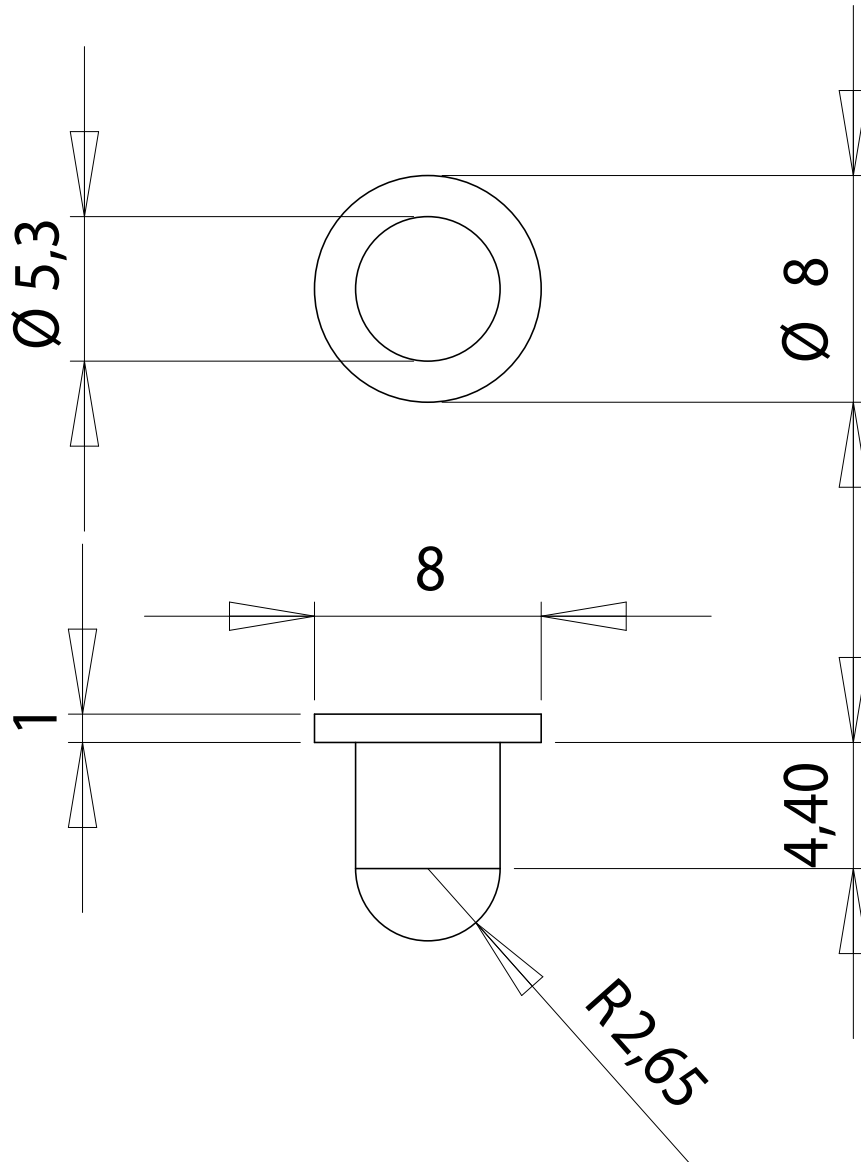
Materials : PLASTIC

Part : PLASTIC WASHER – Ø40

Date :

Rev : 1

Details :



dcw.

Name : LAMP GRAS

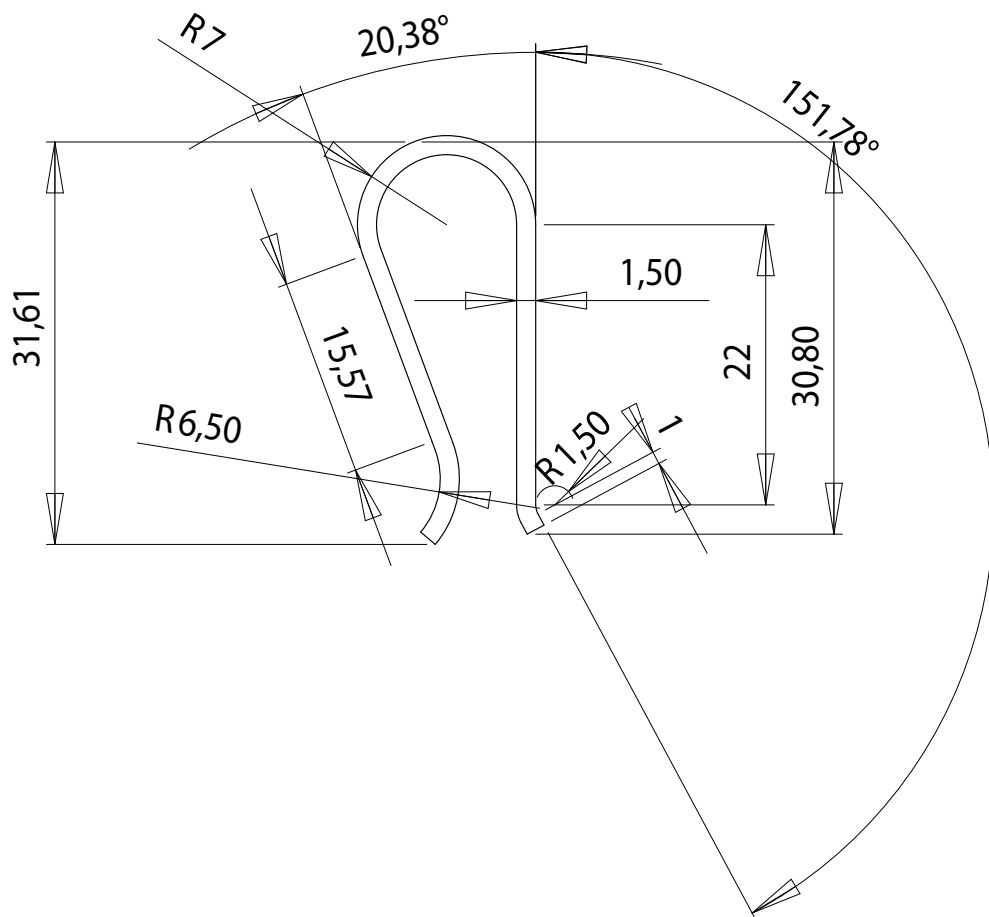
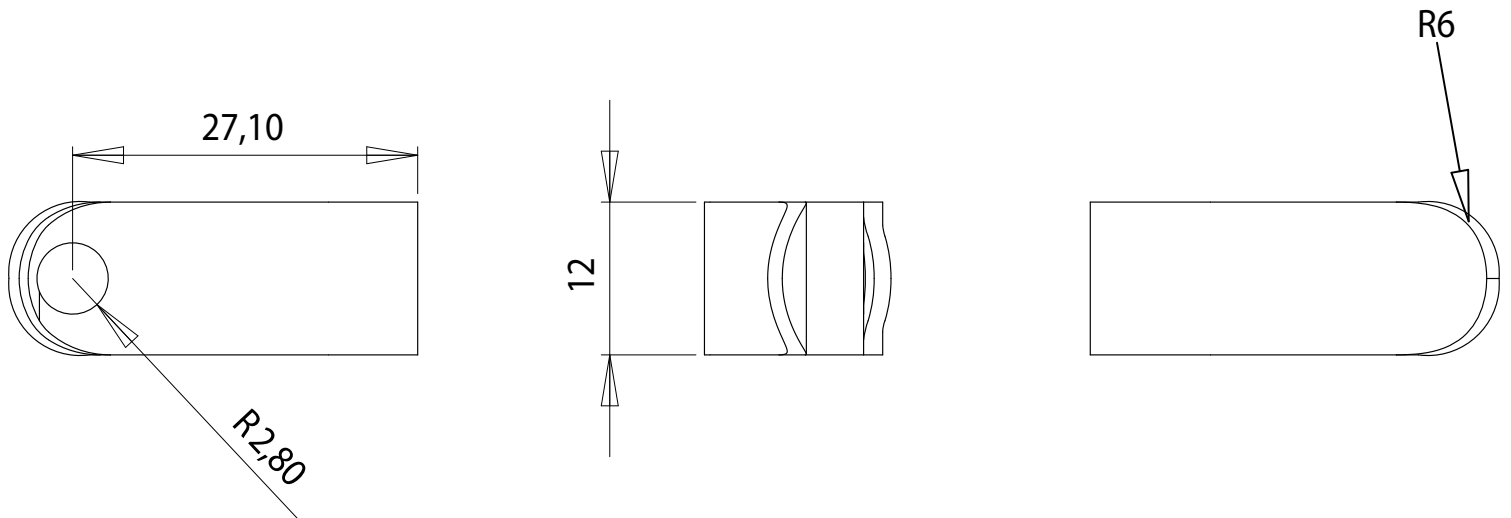
Materials : CHROMED STEEL

Part : AXIS

Date :

Rev : 1

Details :



PLIERS SUPPLIED BY DCW

dcw.

Name : LAMP GRAS

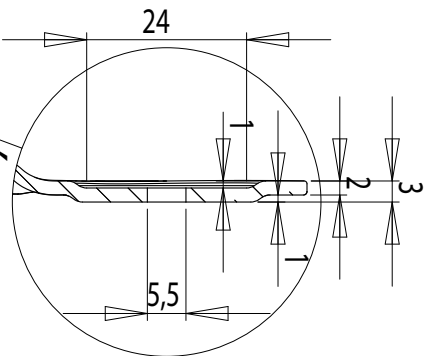
Materials : SPRING PAINTED STEEL / CHROMED STEEL

Part : PLIERS

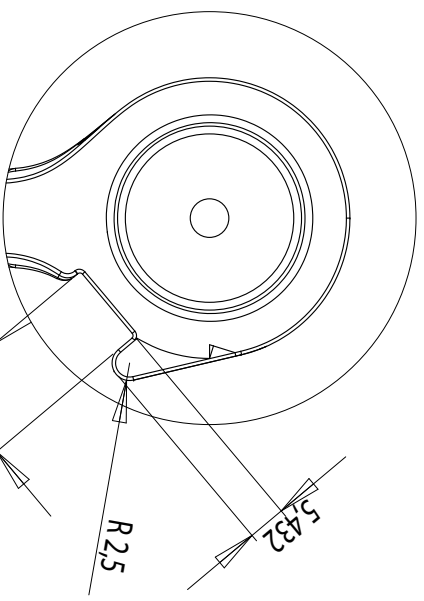
Date :

Rev : 1

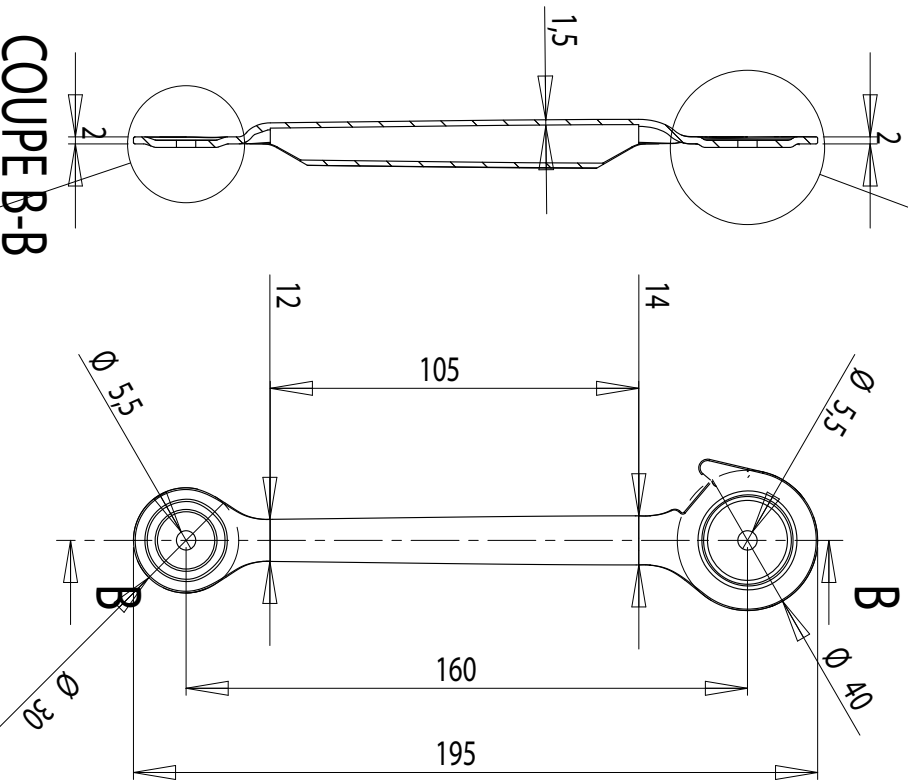
Details :



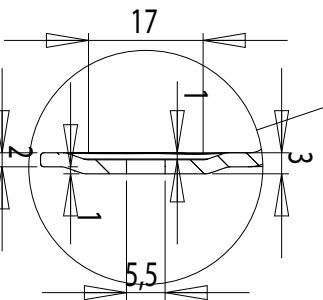
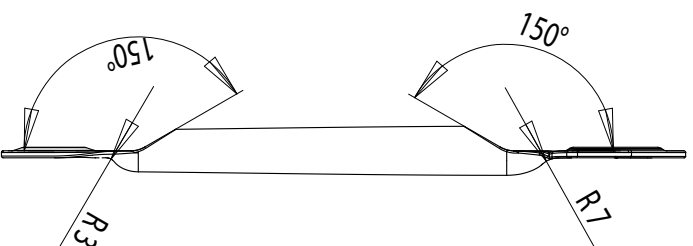
DETAIL C



DETAIL A



COUPE B-B



DETAIL D



Name : LAMP GRAS

Materials : PAINTED STEEL/CHROMED STEEL

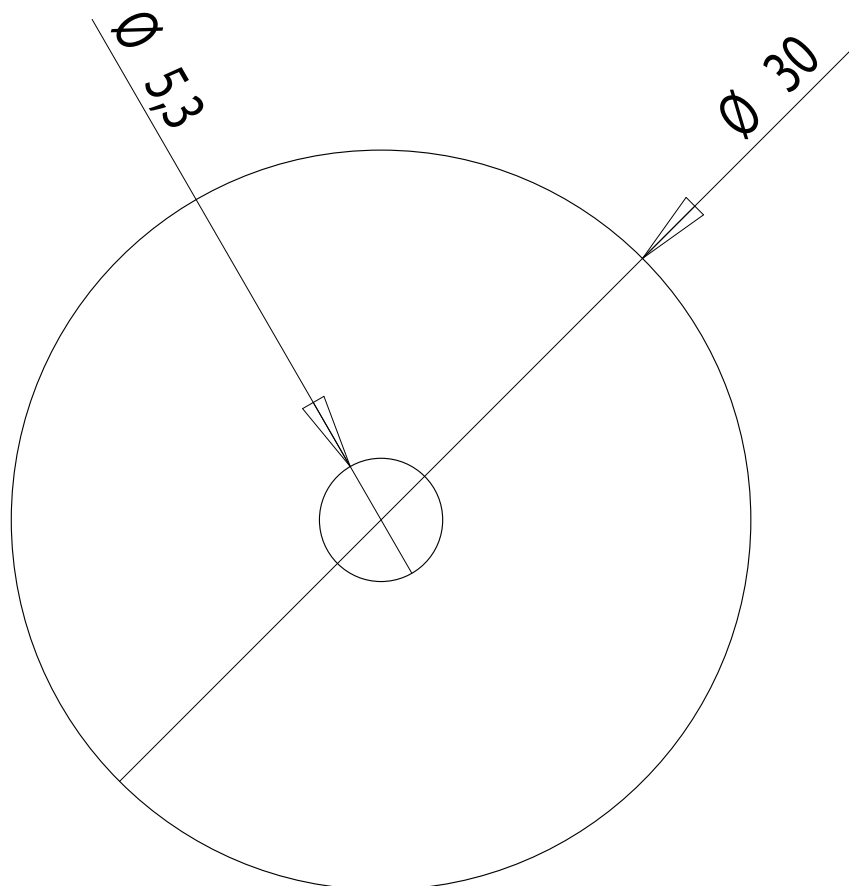
dcw.

Part : TUBE 2

Date :

Rev : 1

Details :



PLIERS SUPPLIED BY DCW

dcw.

Name : LAMP GRAS

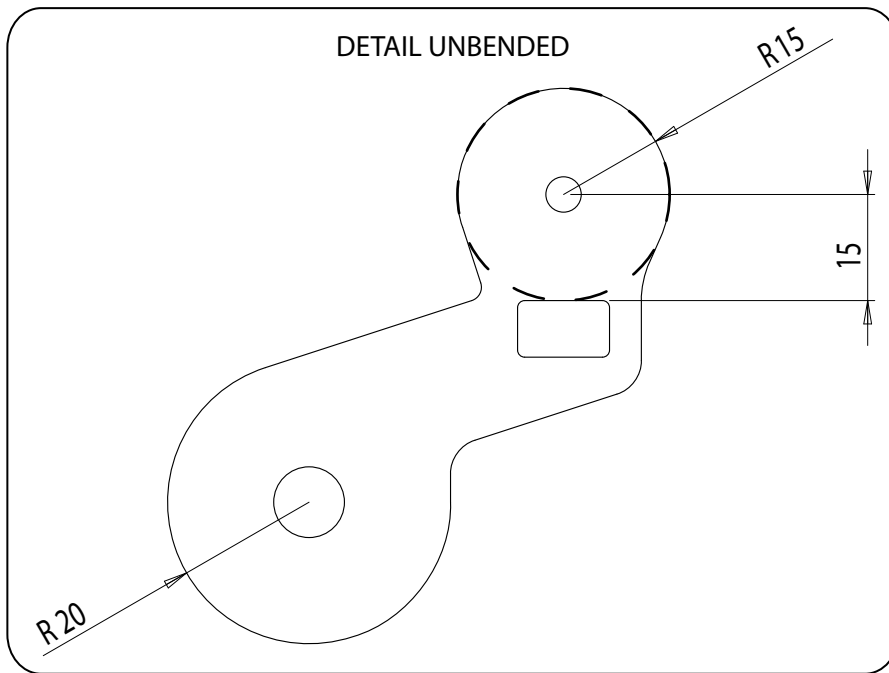
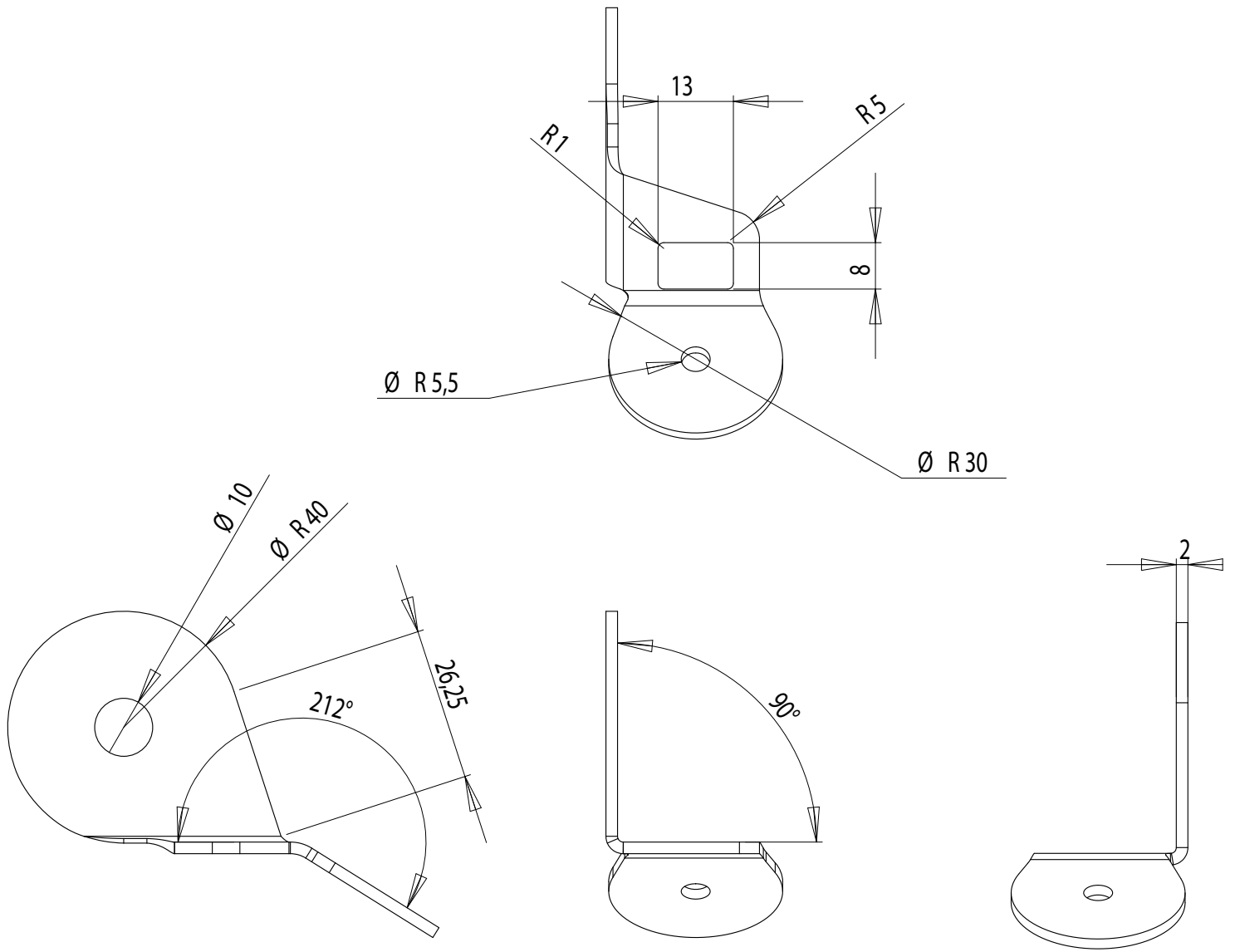
Materials : PLASTIC

Part : PLASTIC WASHER – Ø30

Date :

Rev : 1

Details :



dcw.

Name : **LAMP GRAS**

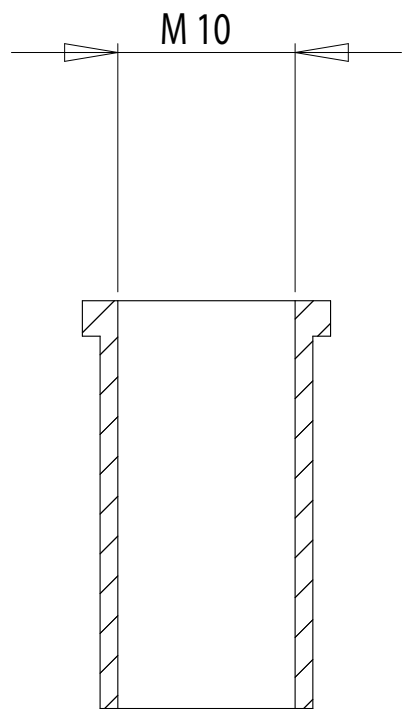
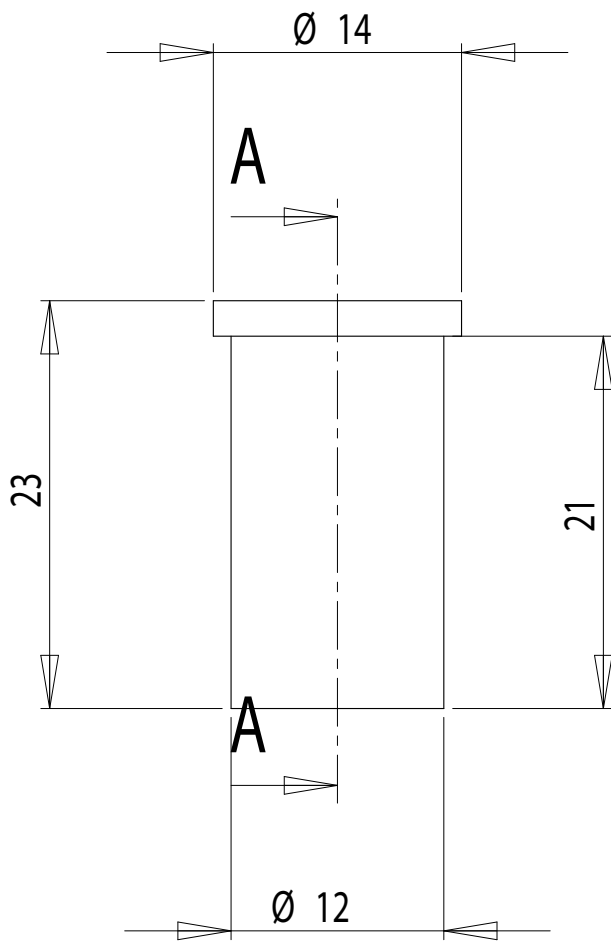
Materials : PAINTED STEEL / CHROMED STEEL

Part : **JUNCTION PIECE**

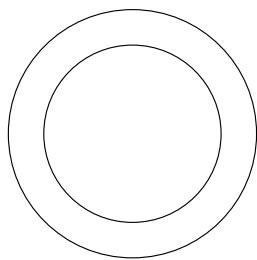
Date :

Rev : 1

Details :



COUPE A-A



dcw.

Name : **LAMP GRAS**

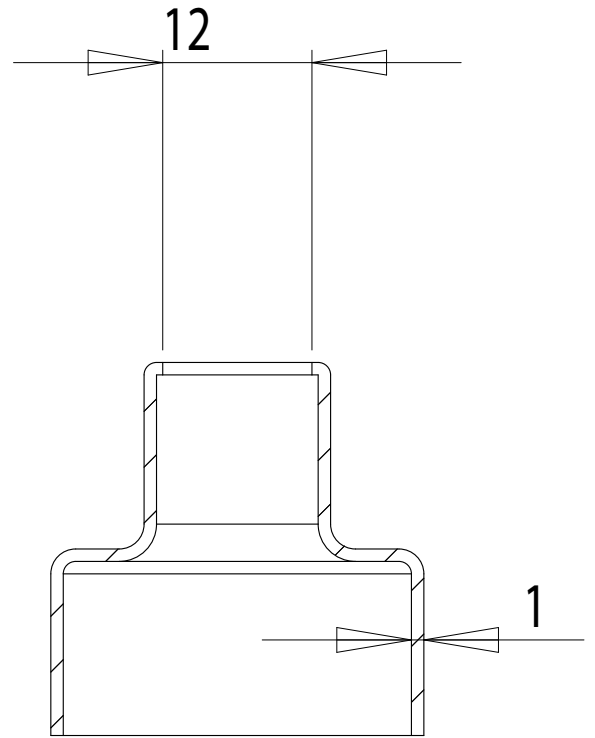
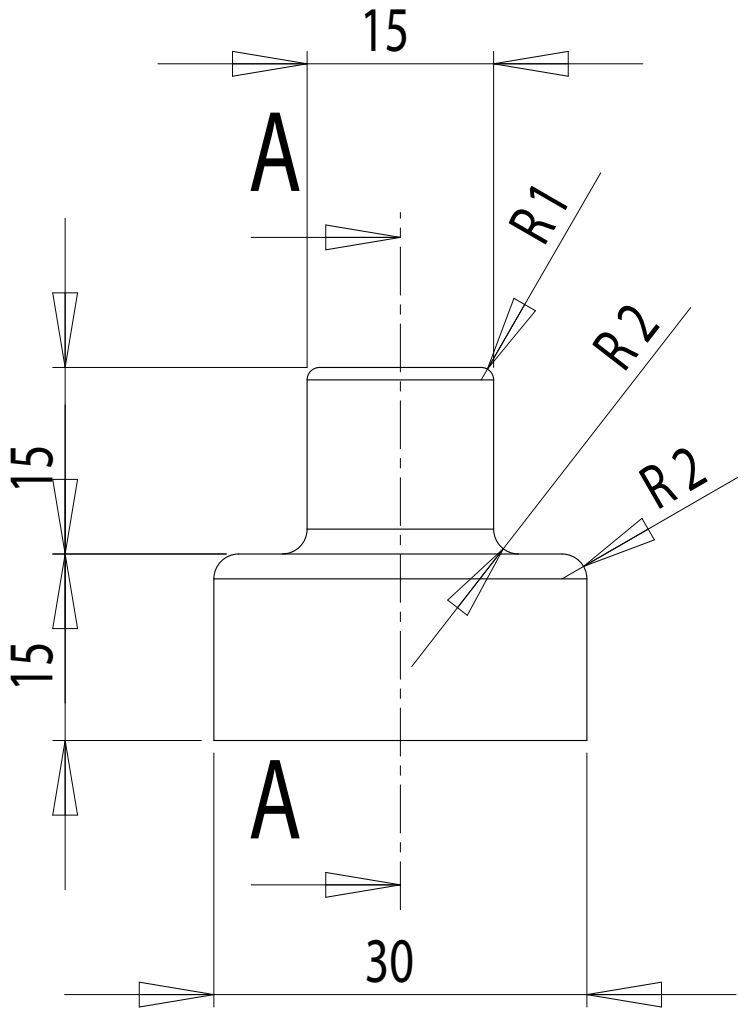
Part : **FIXATION PIECE**

Date :

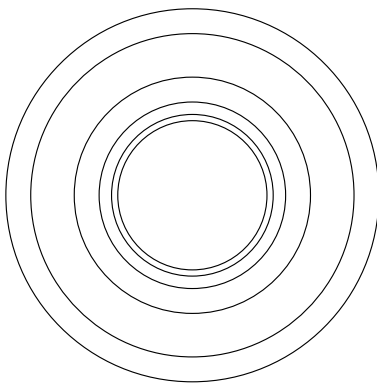
Rev : 1

Materials : PAINTED STEEL / CHROMED STEEL

Details :



COUPE A-A



dcw.

Name : **LAMP GRAS**

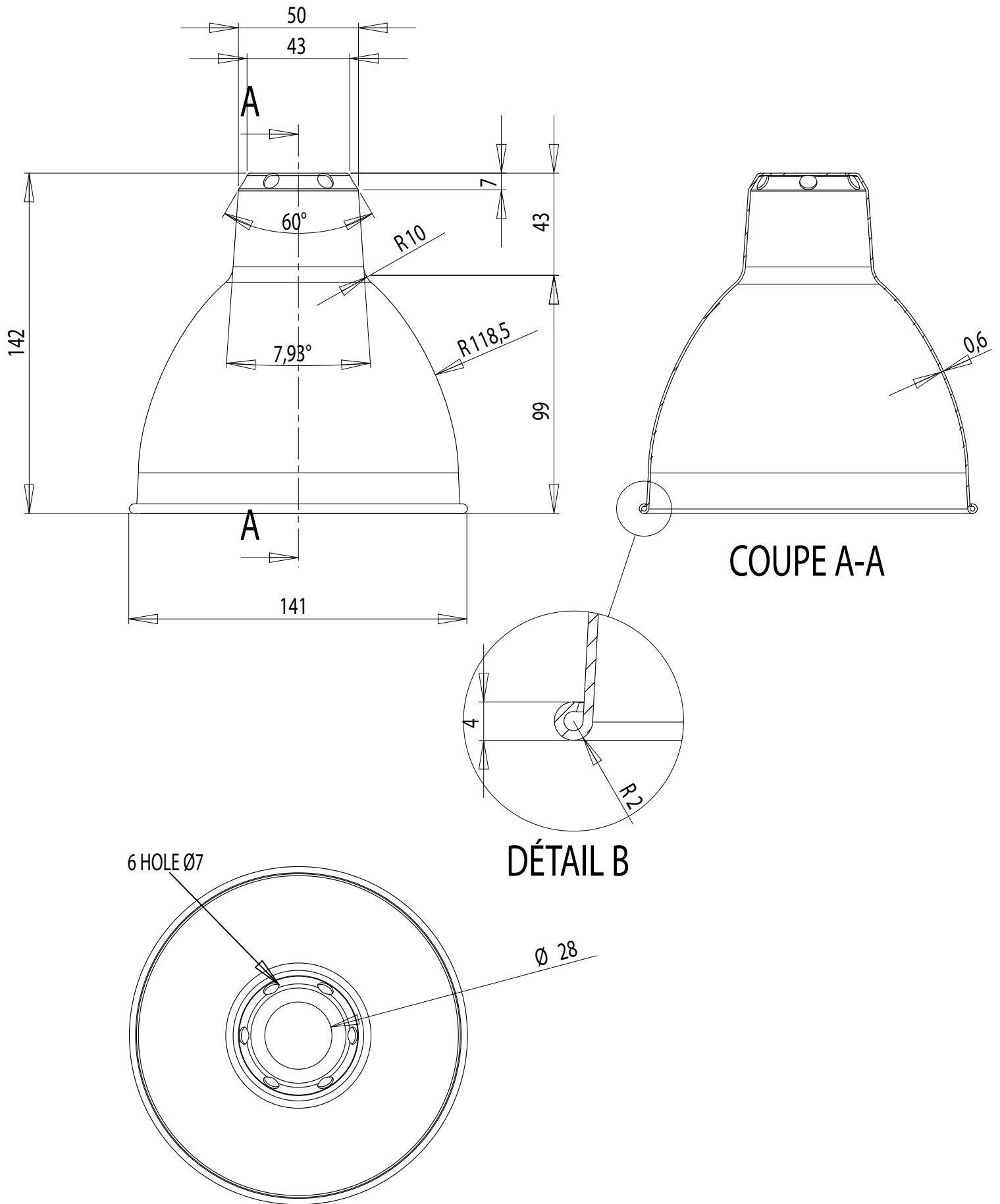
Matériaux : PAINTED STEEL / CHROMED STEEL

Part : **COVERING PIECE**

Date :

Rev : 1

Details :



dcw.

Name : **LAMP GRAS**

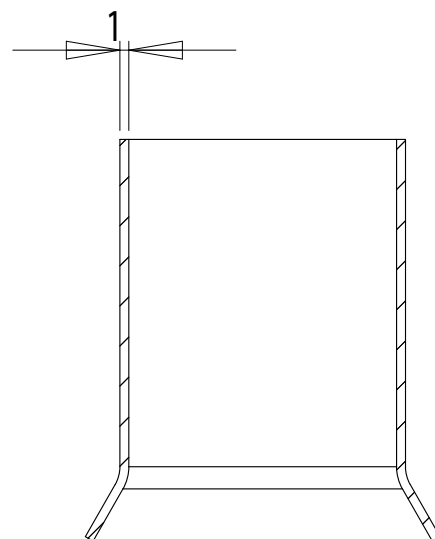
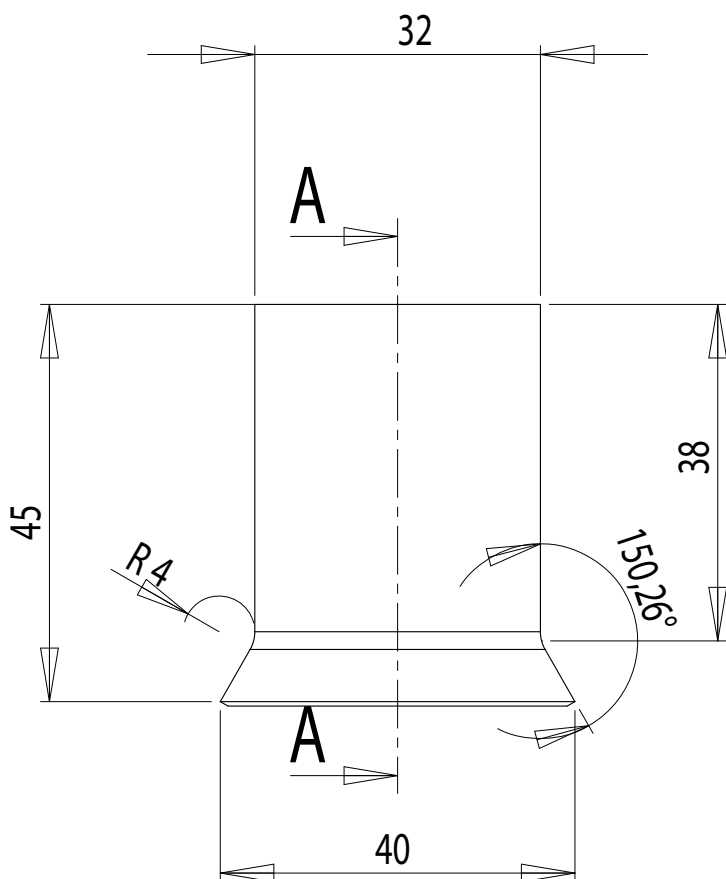
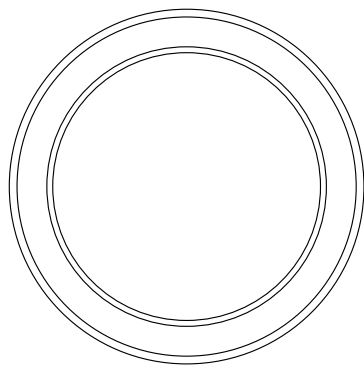
Materials : PAINTED STEEL/CHROMED STEEL

Part : **ROUND SHADE**

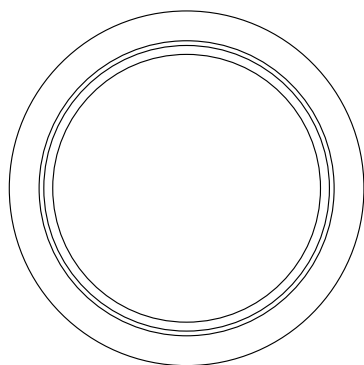
Date :

Rev : 1

Details :



COUPE A-A



dcw.

Name : LAMP GRAS

Materials : PAINTED STEEL / CHROMED STEEL

Part : BULBHOLDER SPACER

Date :

Rev : 1

Details :