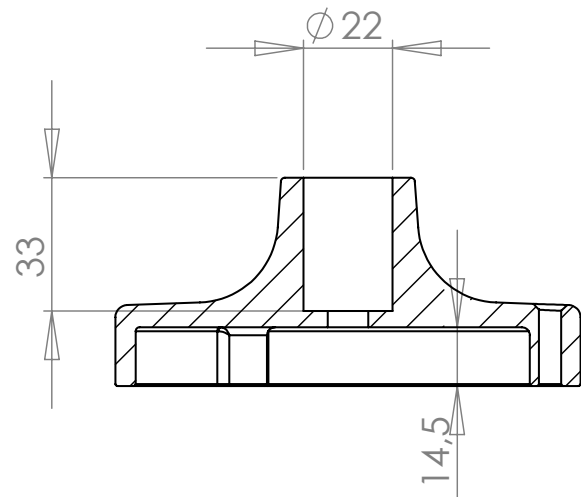
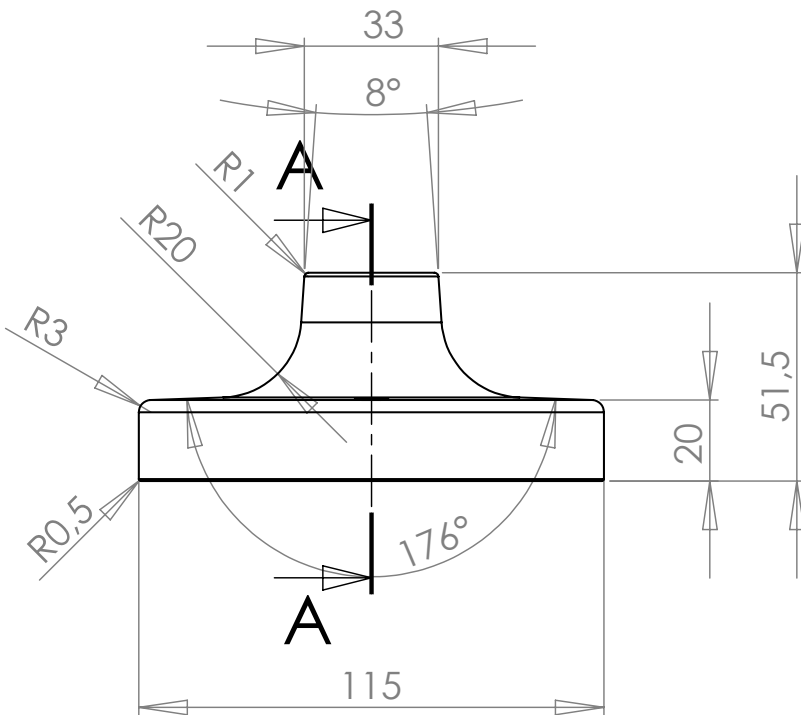
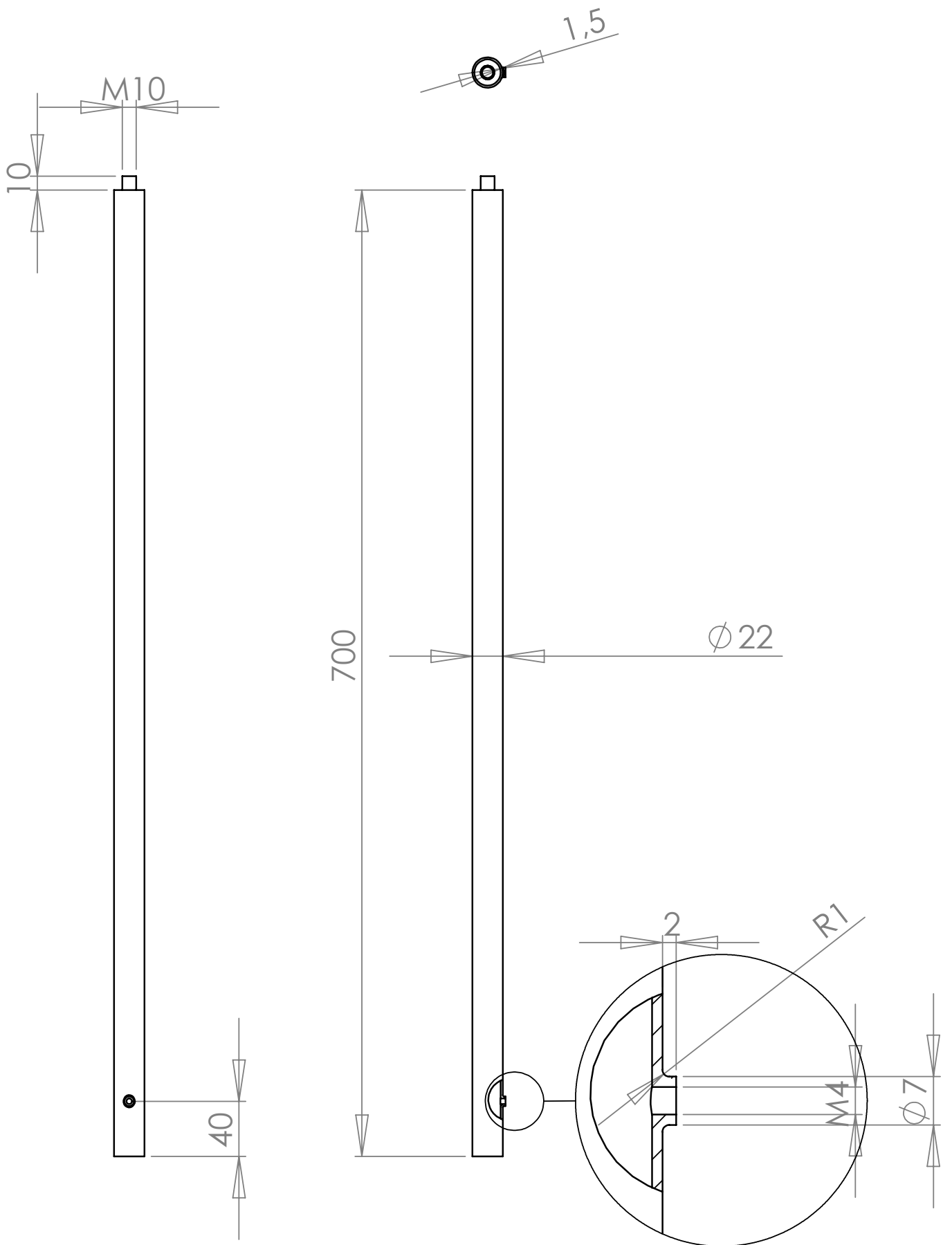


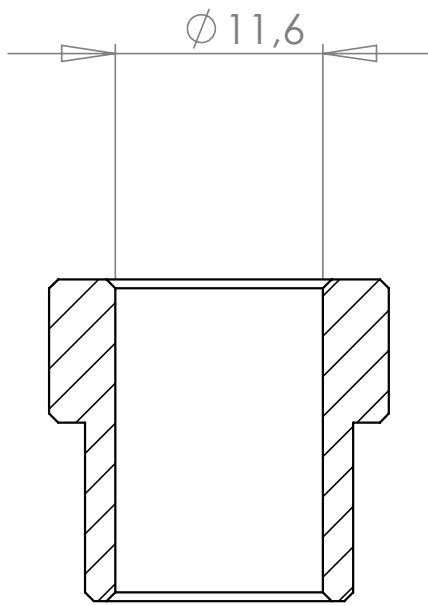
DÉTAIL F



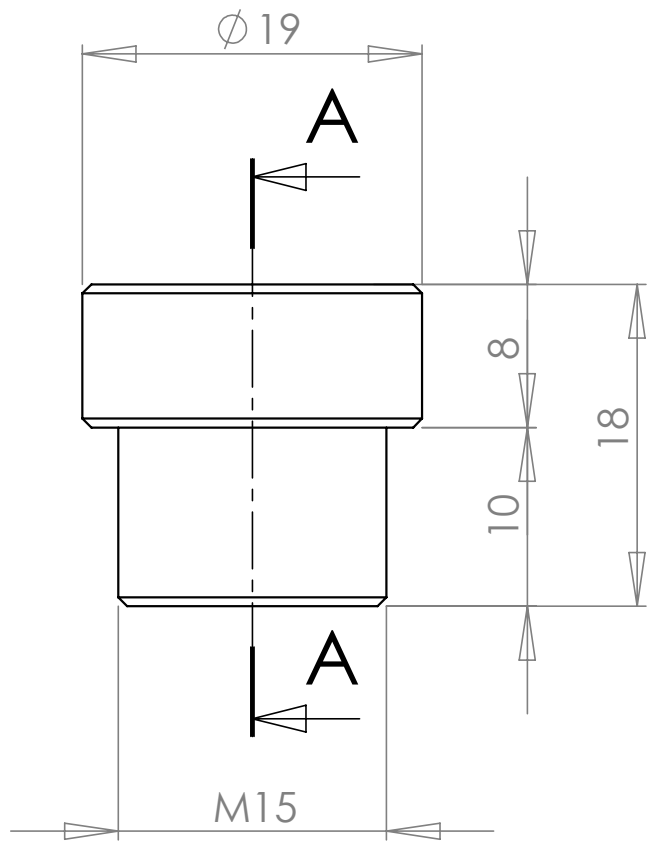
COUPE A-A



DÉTAIL A



COUPE A-A



dcw.

Name : LAMP GRAS N°312

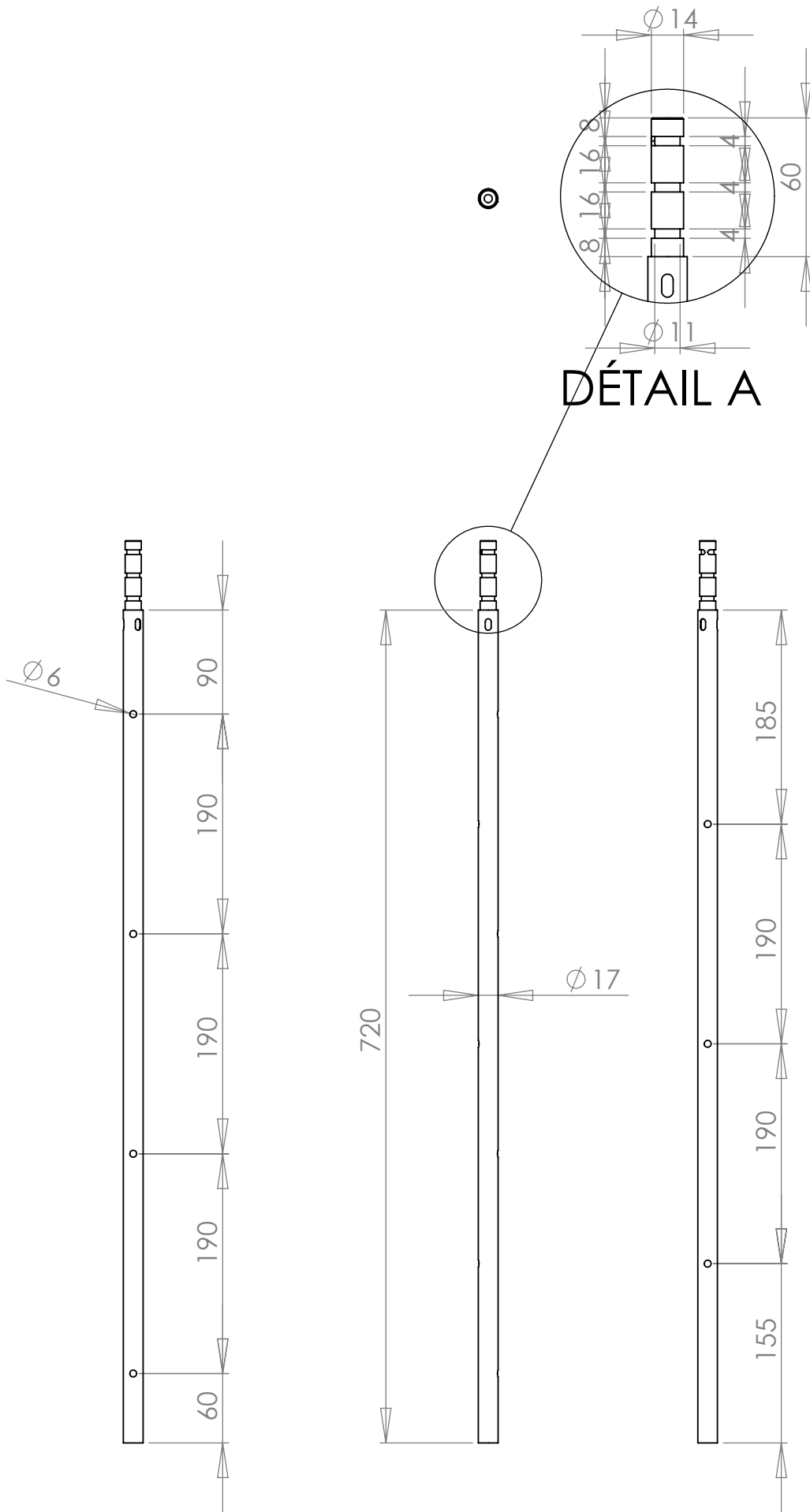
Matériaux : NYLON

Part : CENTRING PIECE

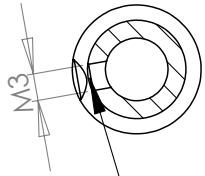
Date :

Rev : 1

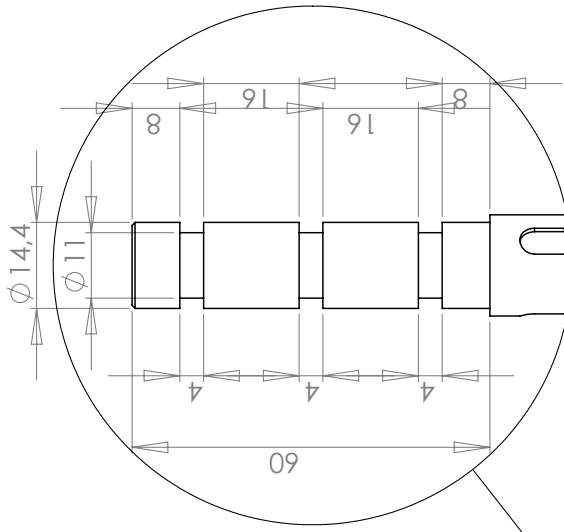
Details :



COUPE B-B

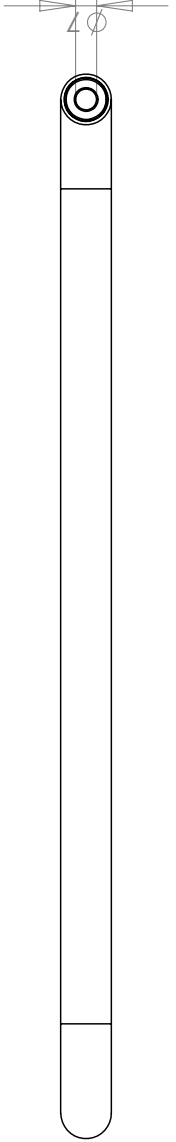
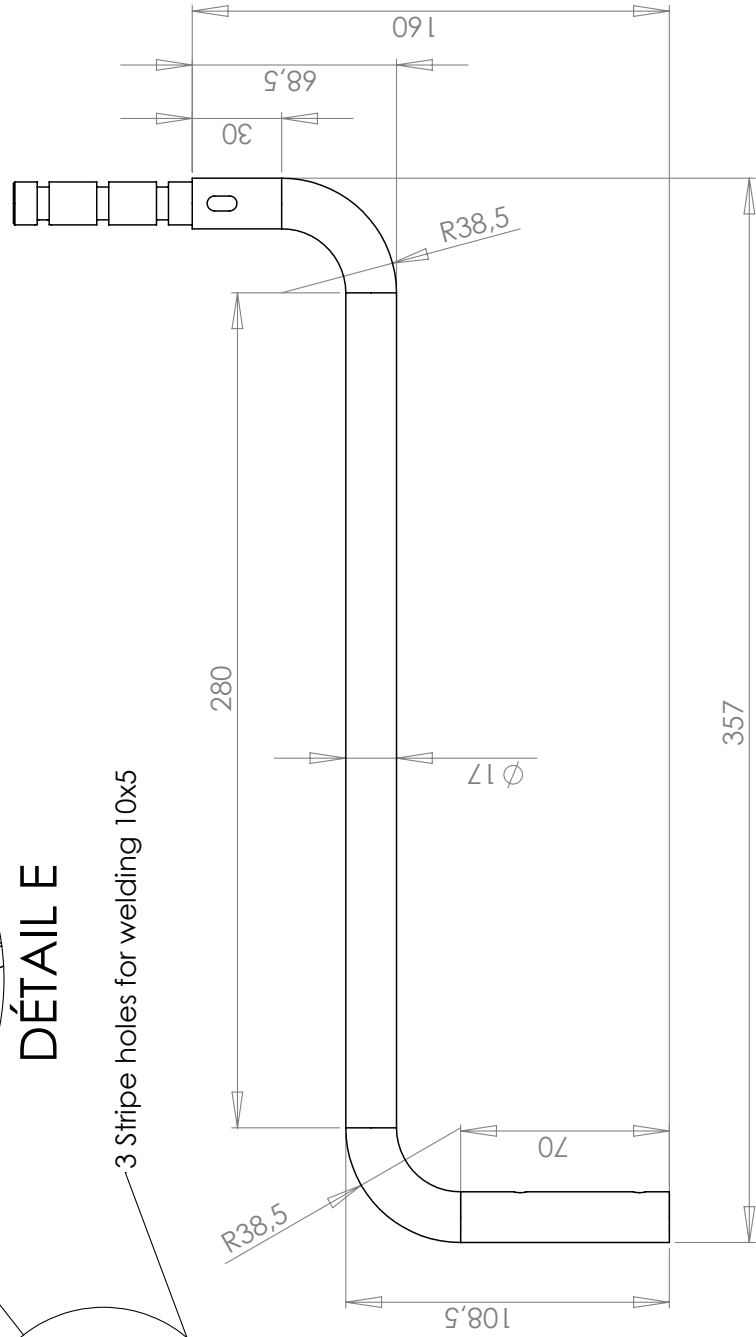
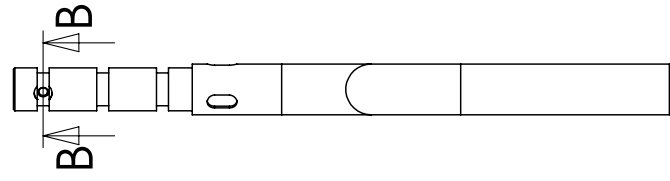
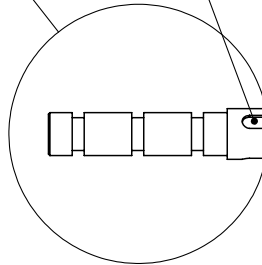


CHAMFER FOR M3 SCREW



DÉTAIL E

3 Stripe holes for welding 10x5



dcw.

Name : LAMP GRAS N°312

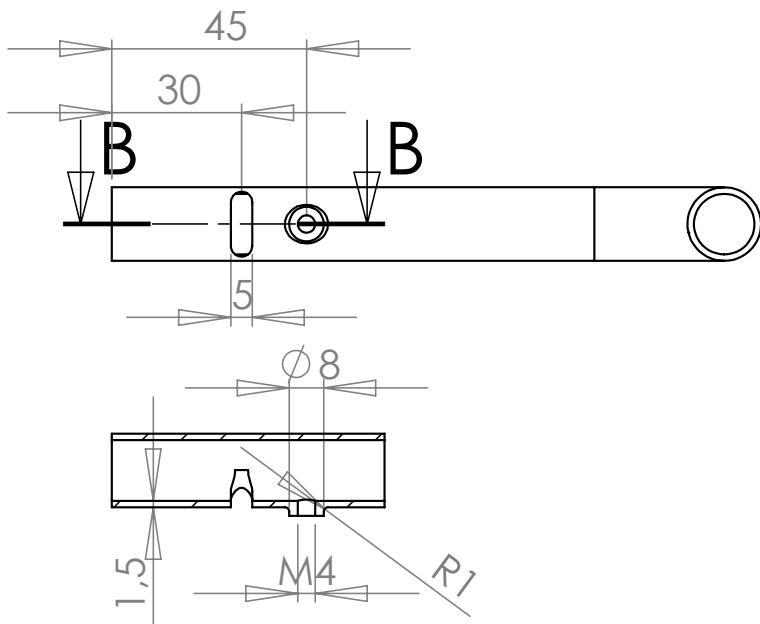
Materials : PAINTED STEEL/CHROMED STEEL

Part : S TUBE

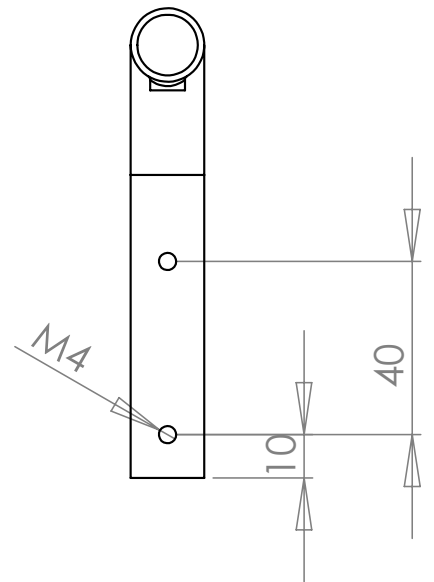
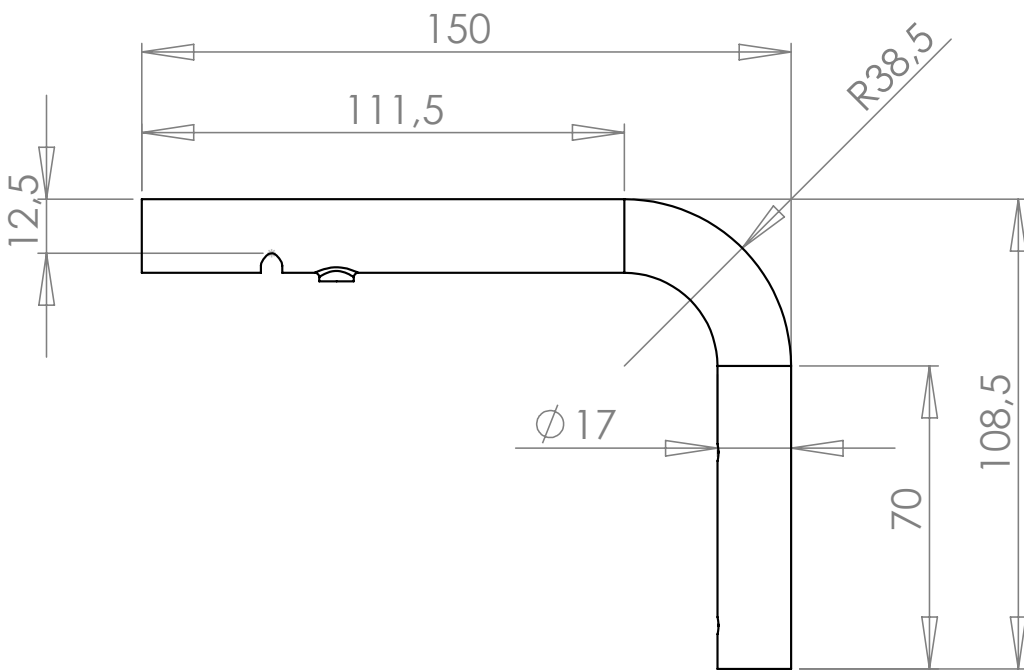
Date :

Rev : 2

Details :



COUPE B-B



dcw.

Name : **LAMP GRAS N°312**

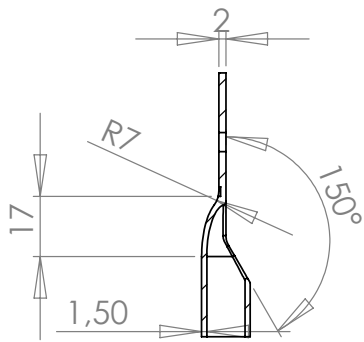
Matériaux : PAINTED STEEL/CHROMED STEEL

Part : **L TUBE – 150**

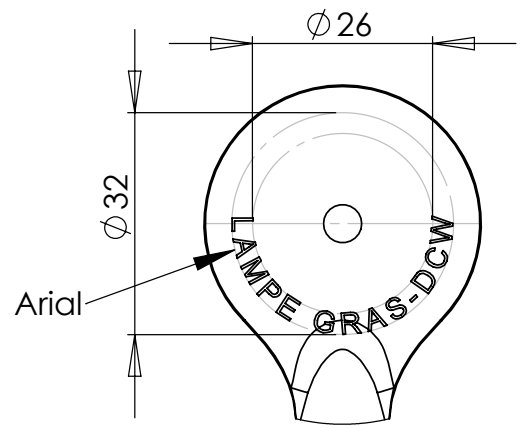
Date :

Rev : 2

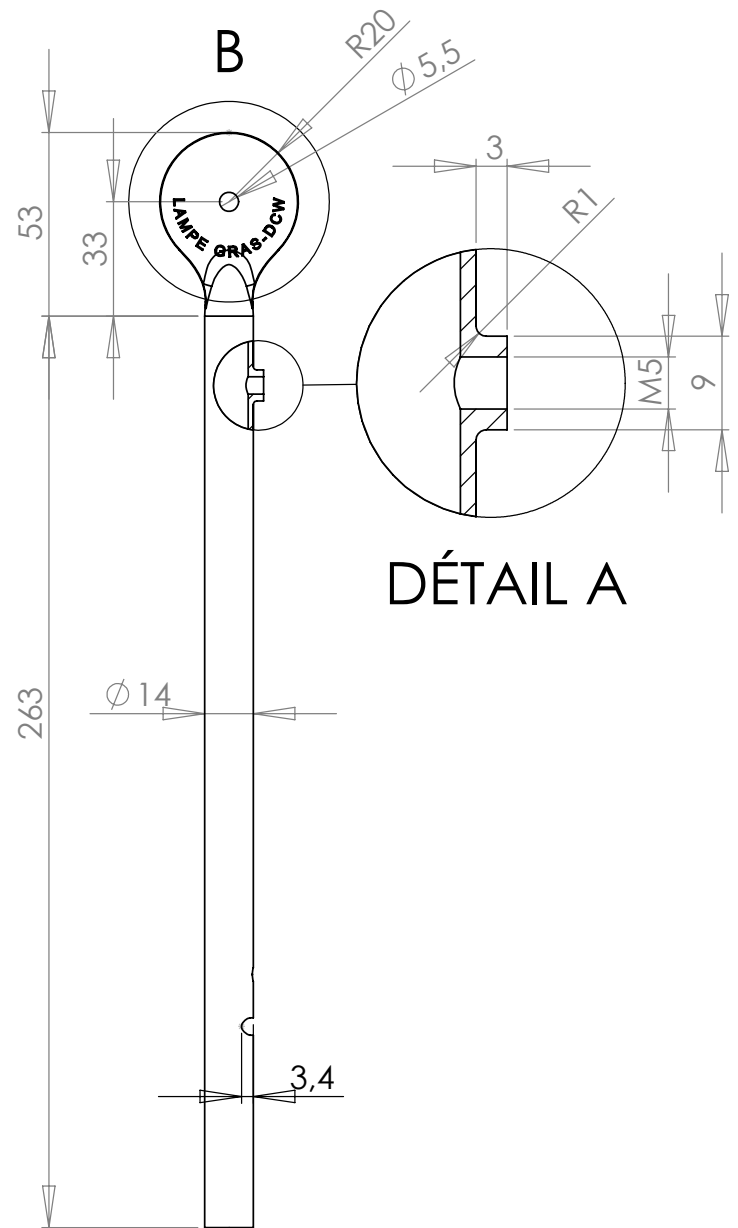
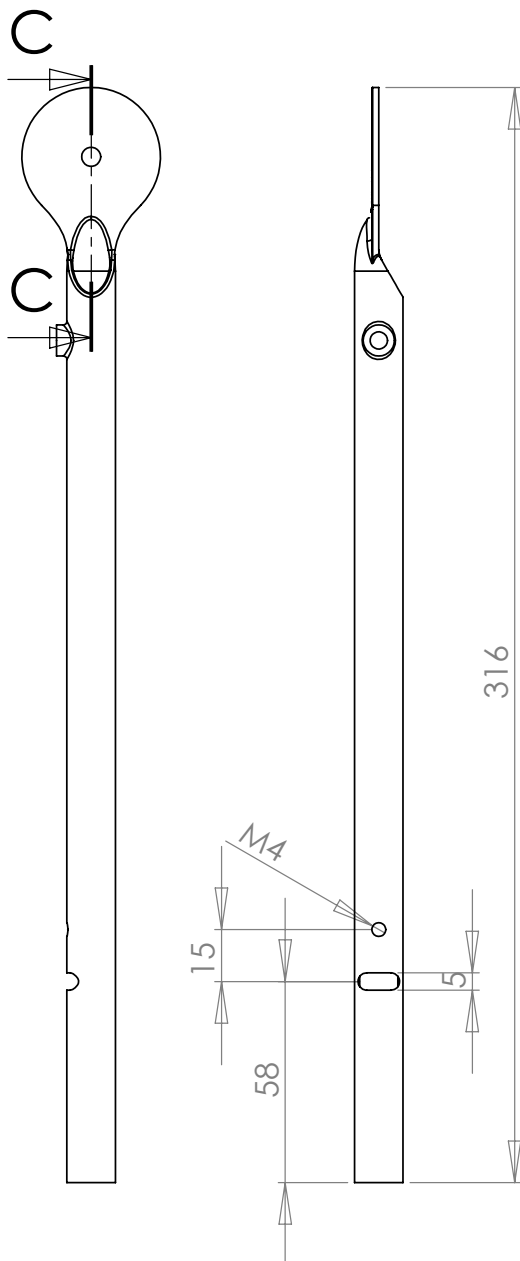
Details :



COUPE C-C



DÉTAIL B



DÉTAIL A

dcw.

Name : LAMP GRAS

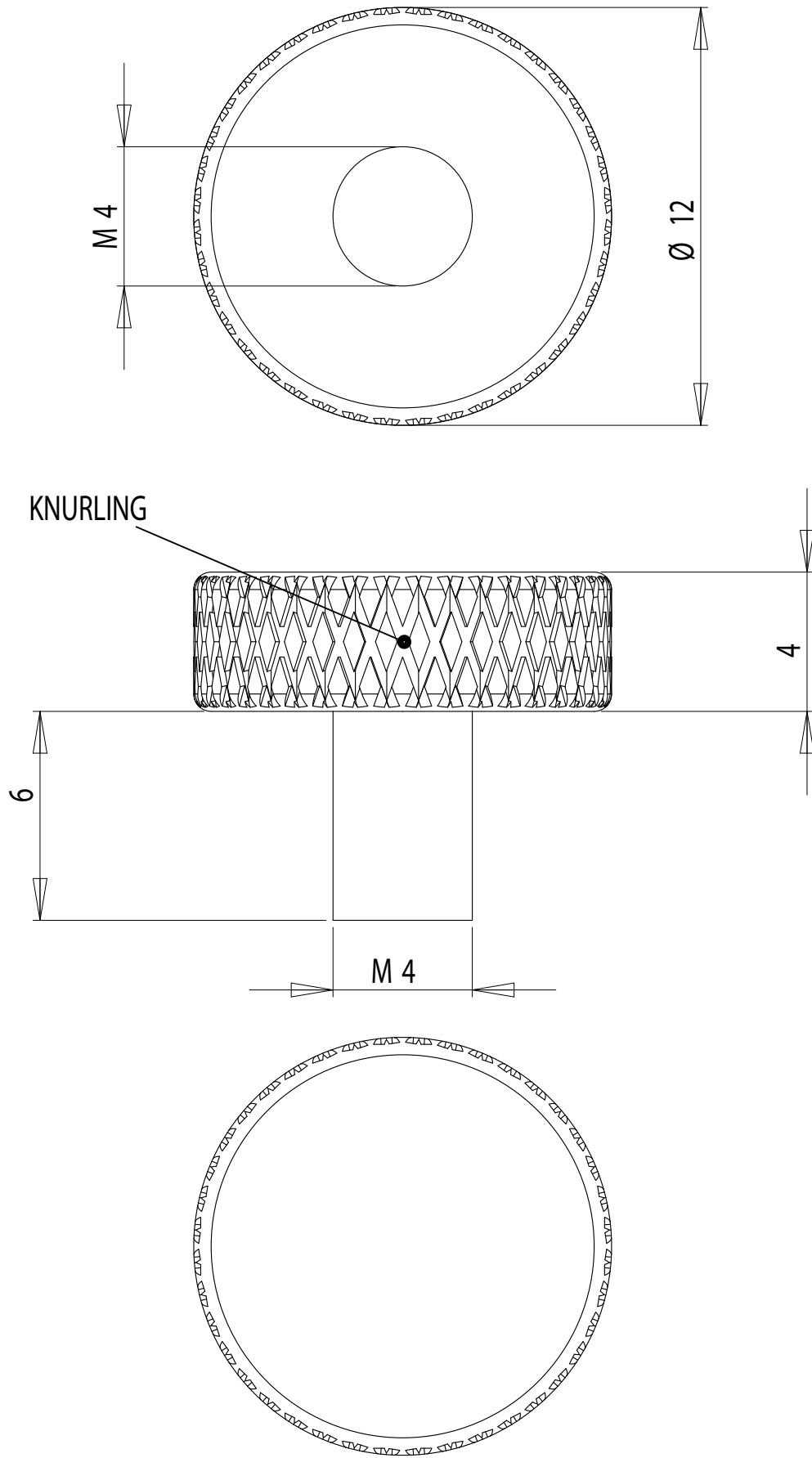
Matériaux : PAINTED STEEL/CHROMED STEEL

Part : TUBE 1 – 316

Date :

Rev : 1

Details :



dcw.

Name : **LAMP GRAS**

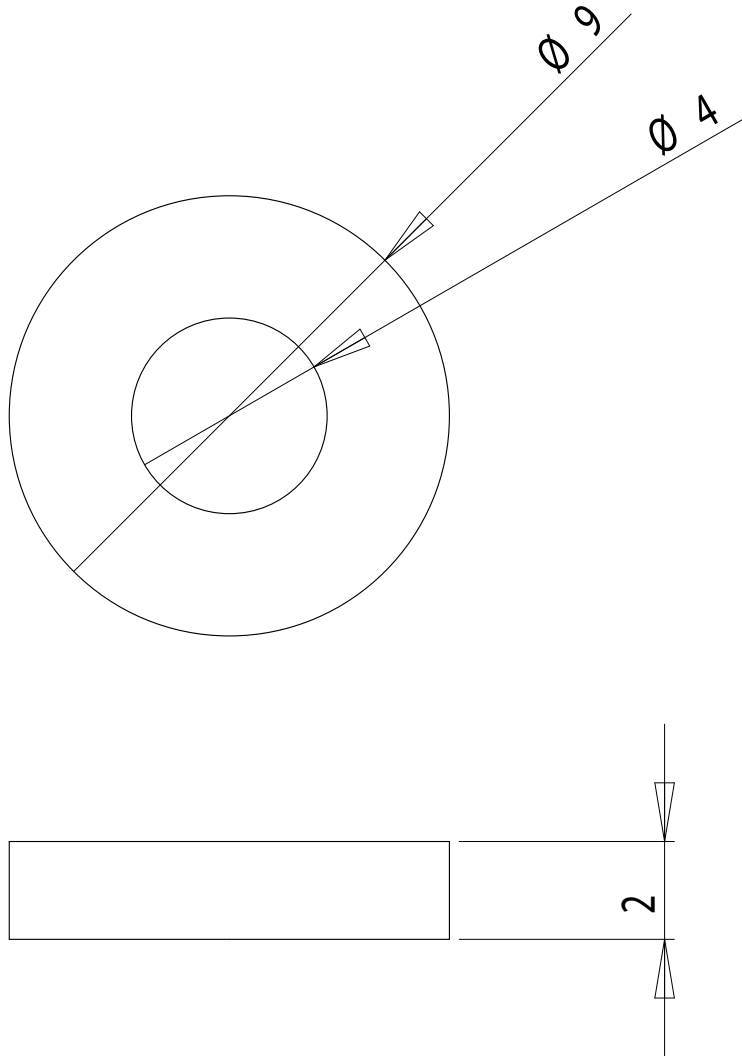
Materials : PAINTED STEEL

Part : **BREAKING HANDLE**

Date :

Rev : 1

Details :



dcw.

Name : **LAMP GRAS**

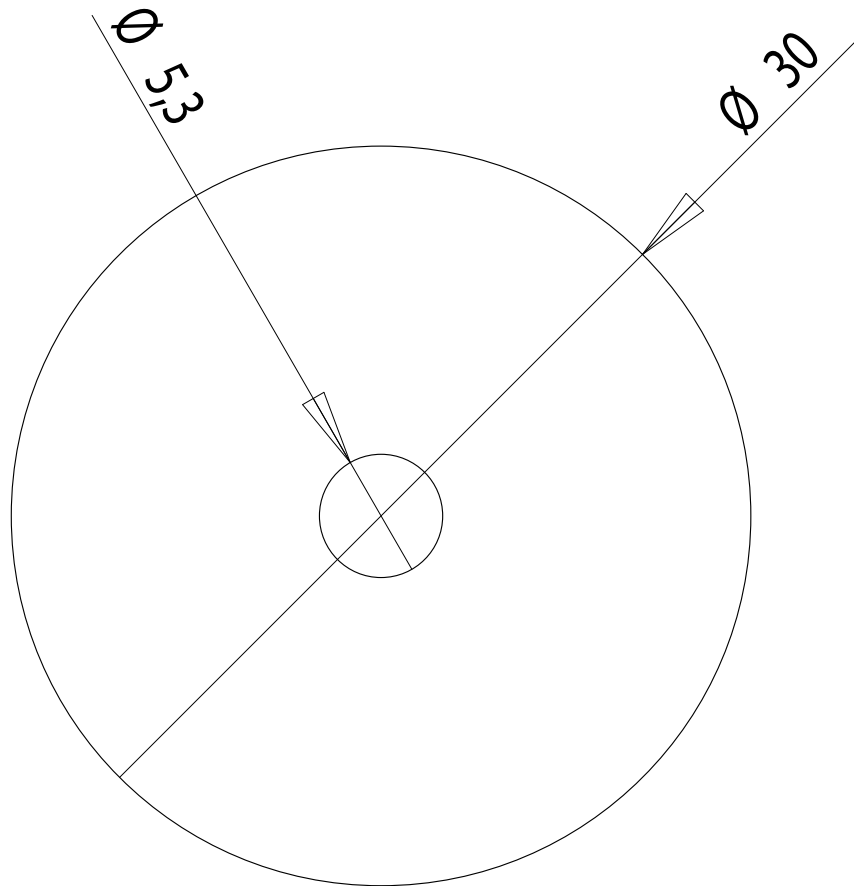
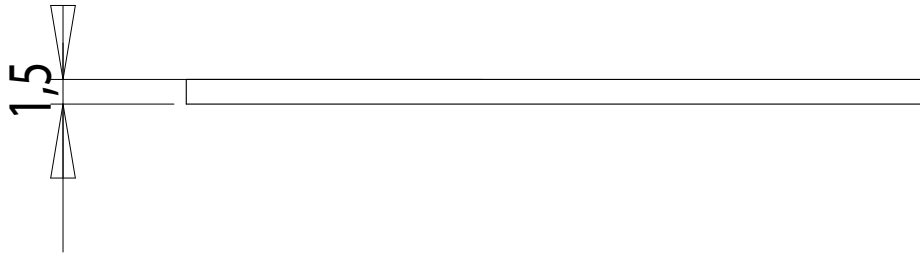
Materials : PLASTIC

Part : **HANDLE WASHER**

Date :

Rev : 1

Details :



PLIERS SUPPLIED BY DCW

dcw.

Name : LAMP GRAS

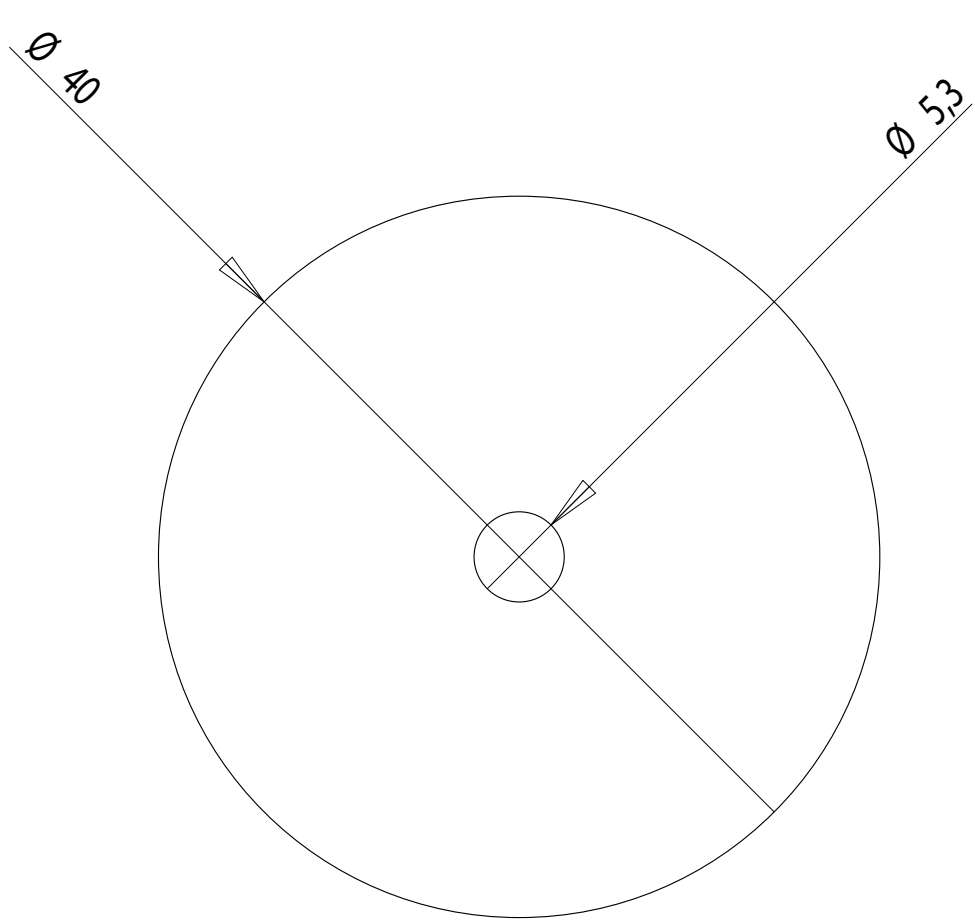
Materials : PLASTIC

Part : PLASTIC WASHER – Ø30

Date :

Rev : 1

Details :



PLIERS SUPPLIED BY DCW

dcw.

Name : LAMP GRAS

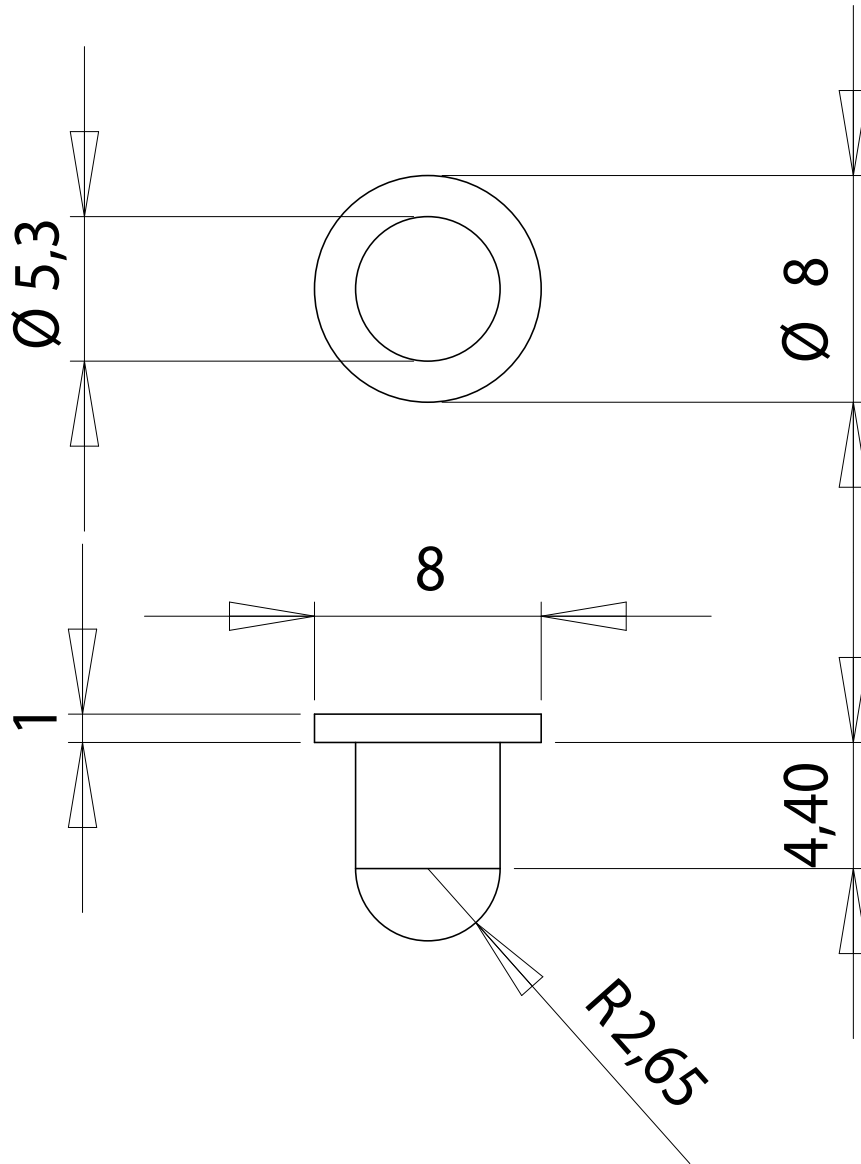
Materials : PLASTIC

Part : PLASTIC WASHER – Ø40

Date :

Rev : 1

Details :



dcw.

Name : **LAMP GRAS**

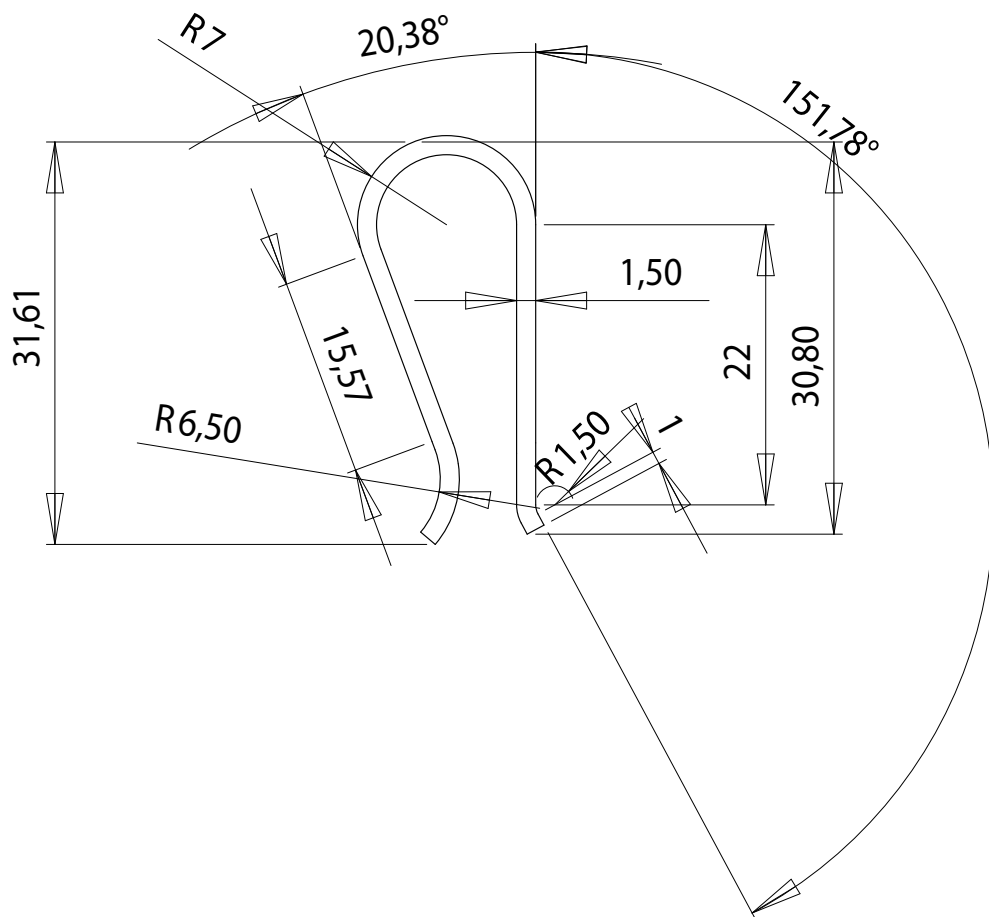
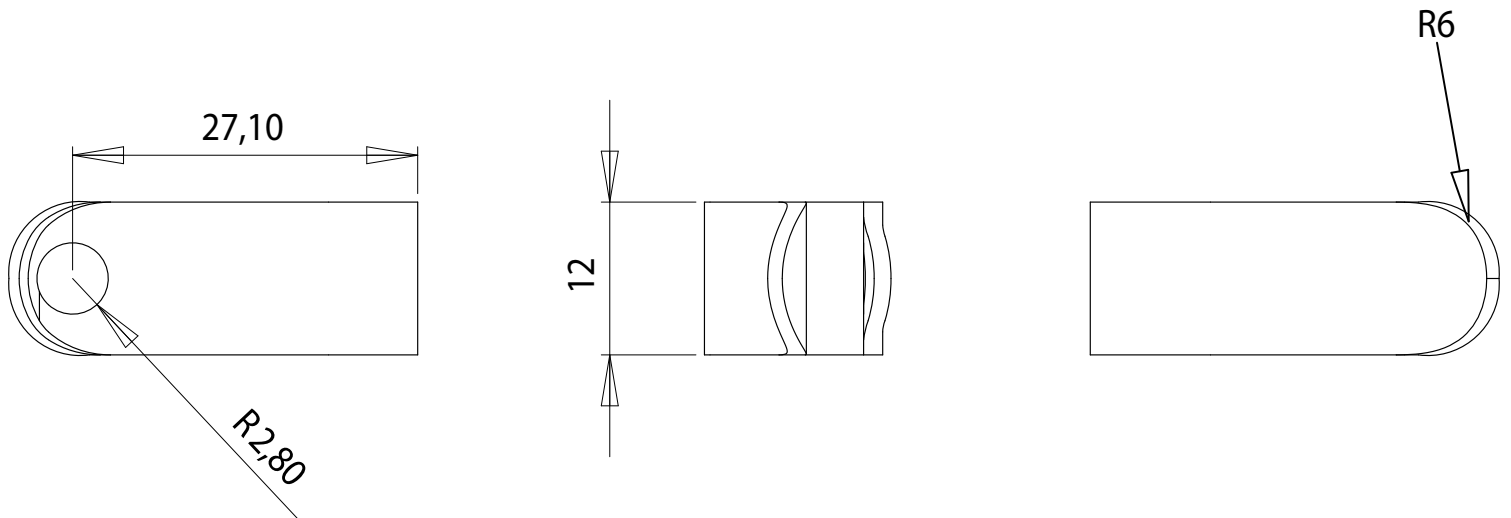
Matériaux : CHROMED STEEL

Part : **AXIS**

Date :

Rev : 1

Details :



PLIERS SUPPLIED BY DCW

dcw.

Name : LAMP GRAS

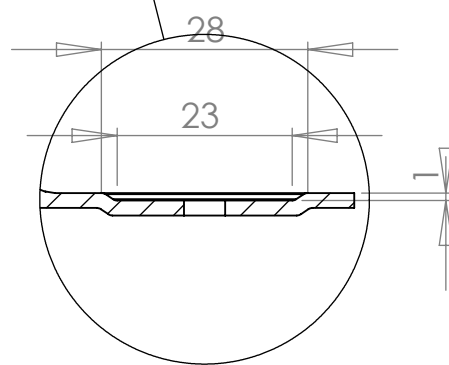
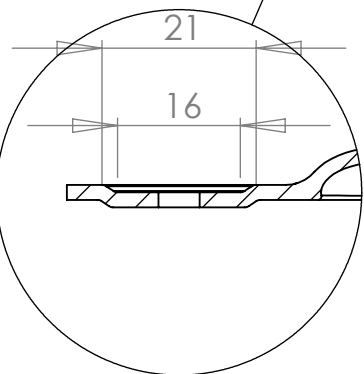
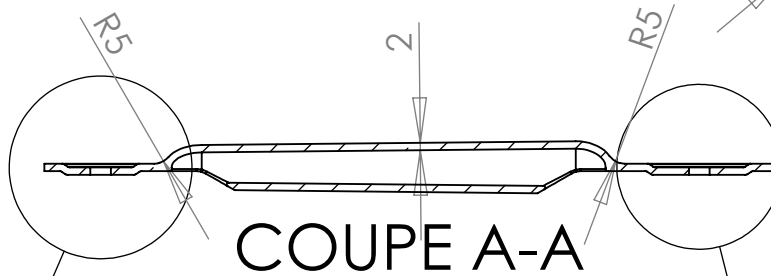
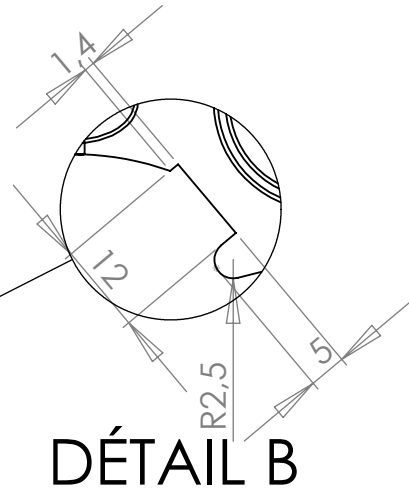
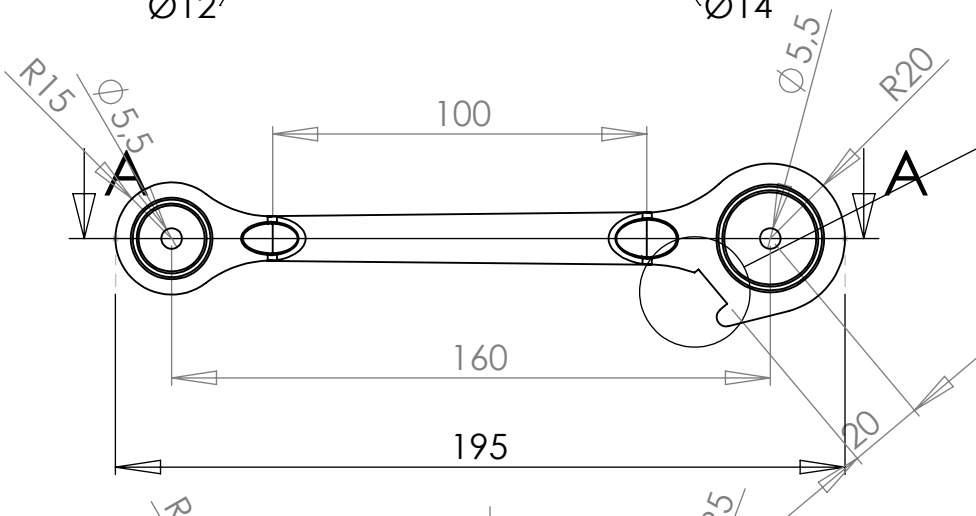
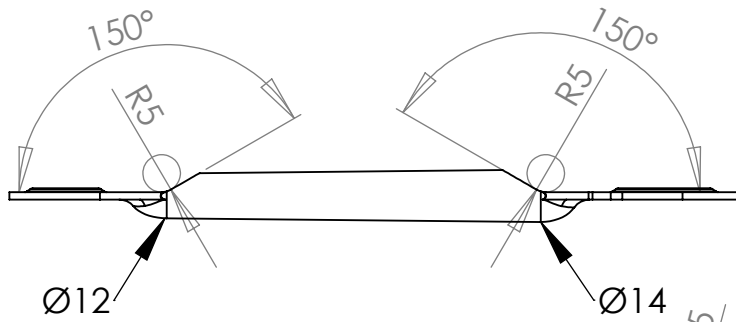
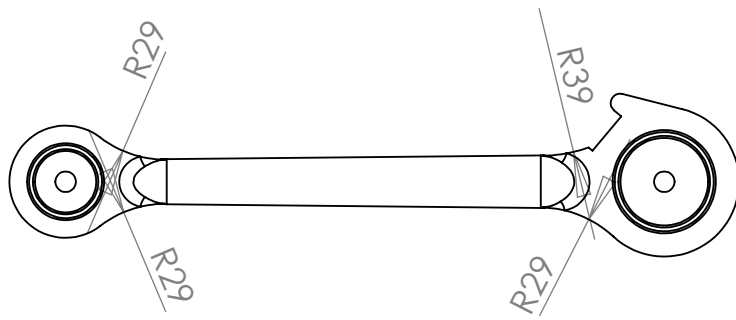
Materials : SPRING CHROMED STEEL

Part : PLIERS

Date :

Rev : 1

Details :



DÉTAIL C

DÉTAIL D

dcw.

Name : LAMP GRAS

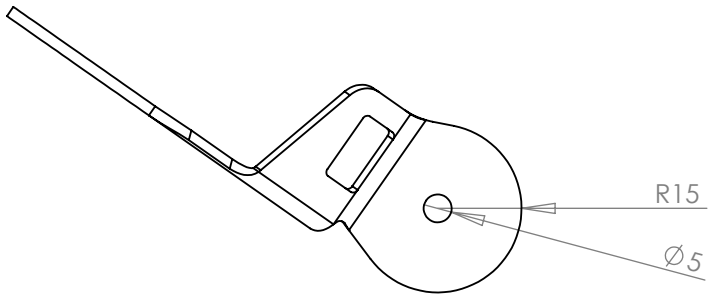
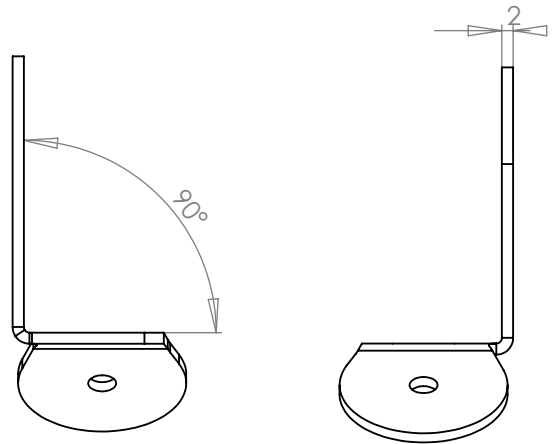
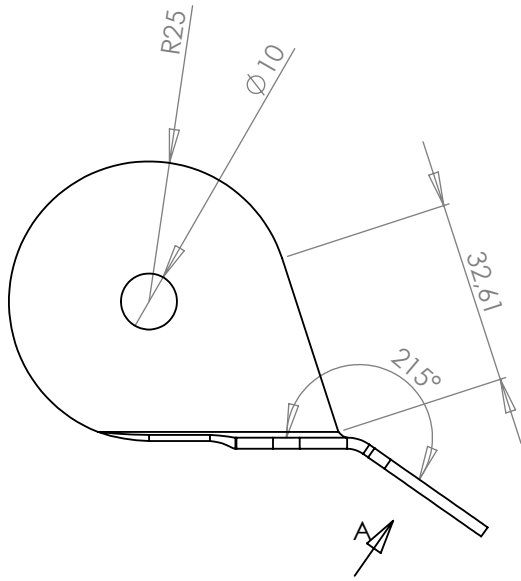
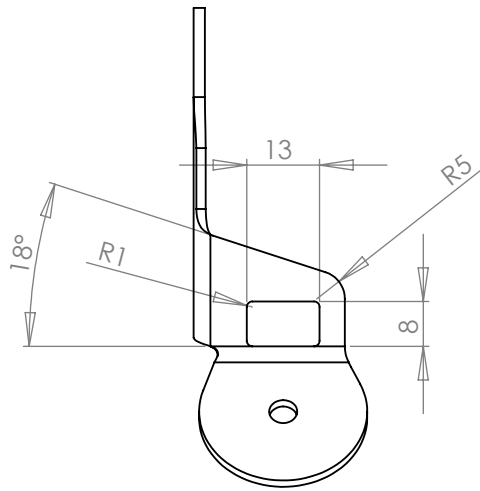
Materials : PAINTED STEEL/CHROMED STEEL

Part : TUBE 2

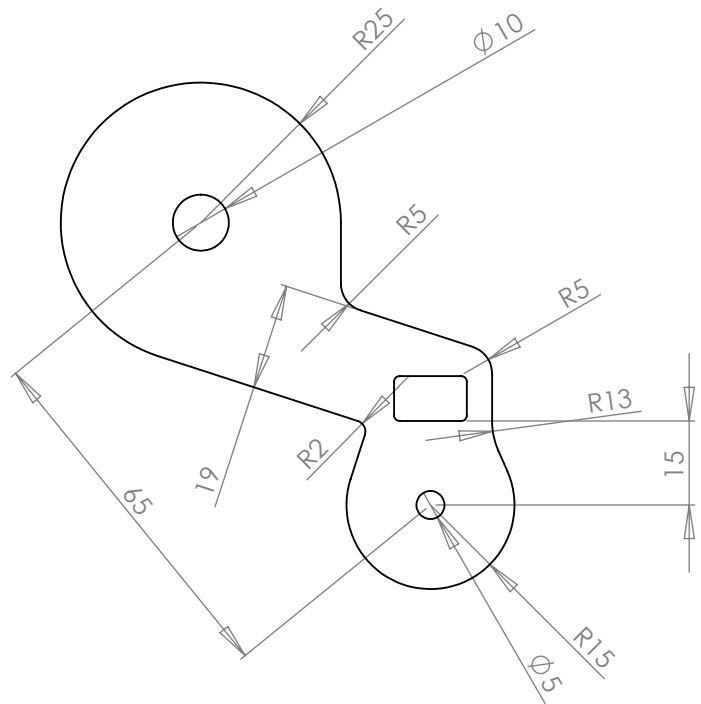
Date : 16/12/2013

Rev : 1

Details :



VUE A



dcw.

Name : **LAMP GRAS**

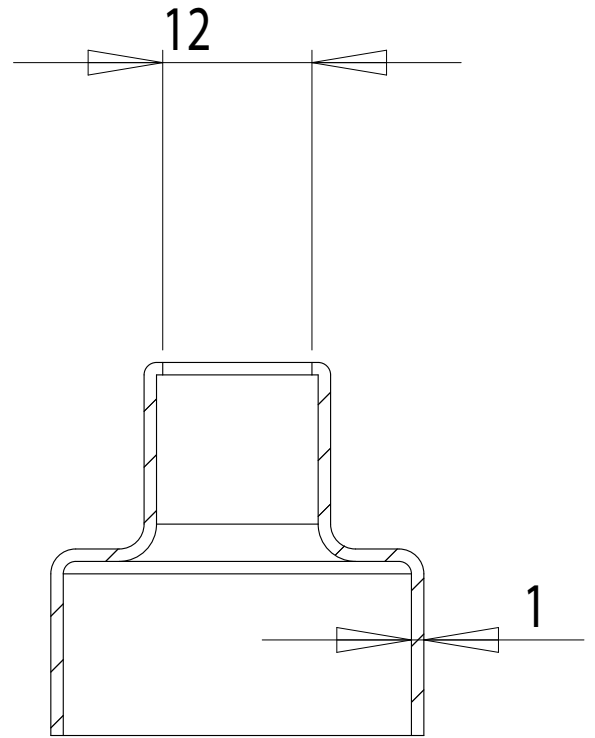
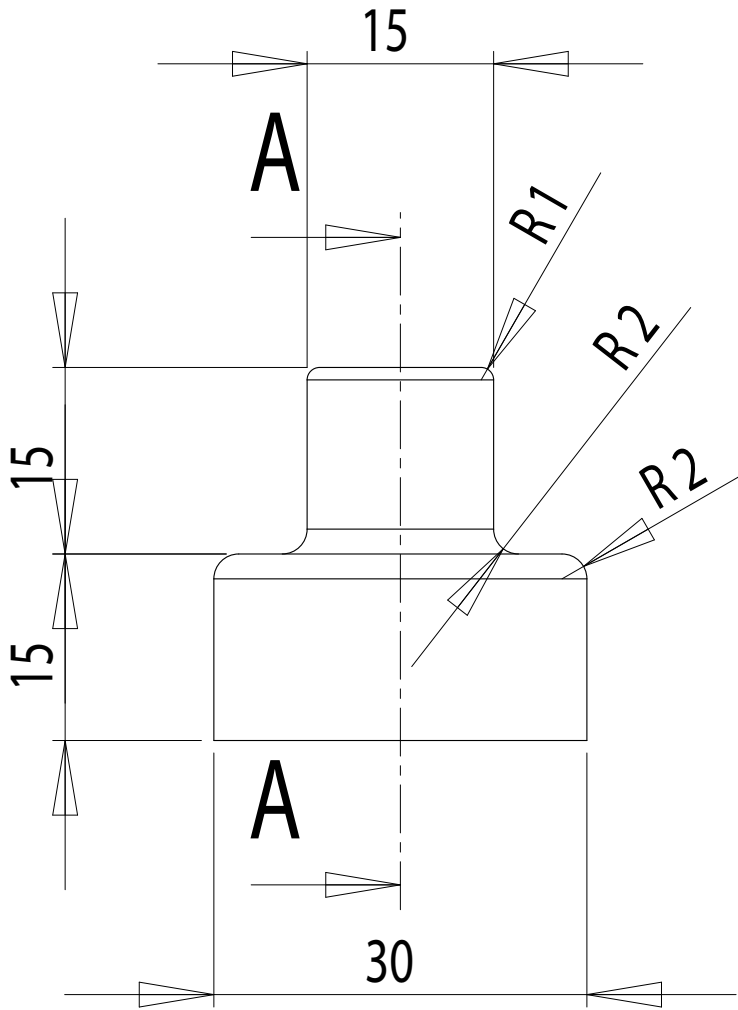
Materials : PAINTED STEEL / CHROMED STEEL

Part : **JUNCTION PIECE for E27**

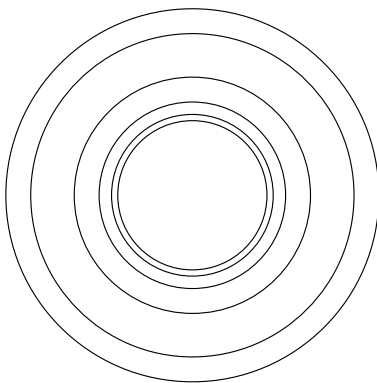
Date :

Rev : 1

Details :



COUPE A-A



dcw.

Name : **LAMP GRAS**

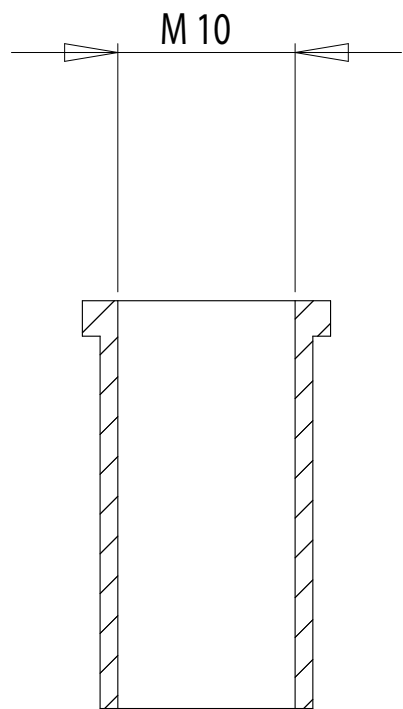
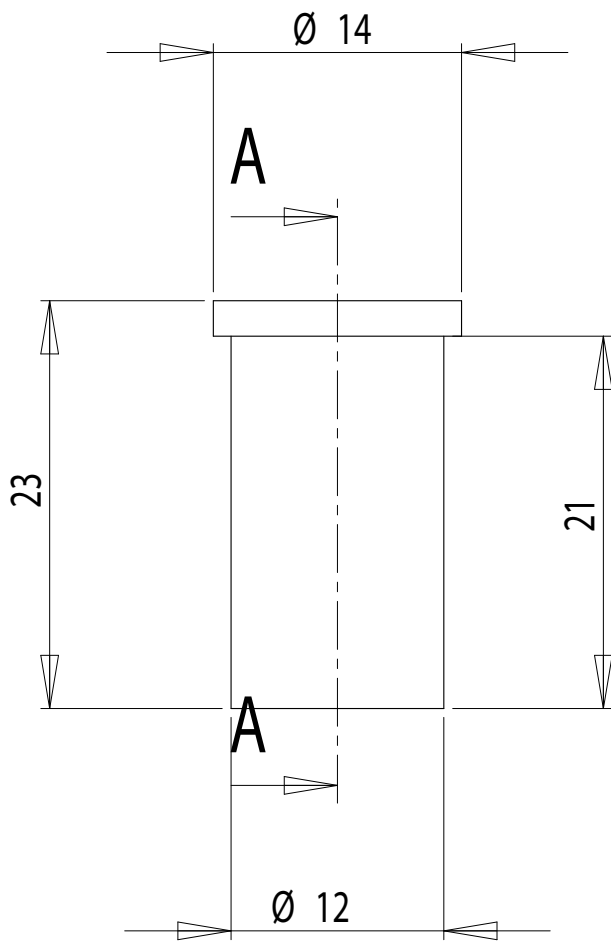
Materials : PAINTED STEEL / CHROMED STEEL

Part : **COVERING PIECE**

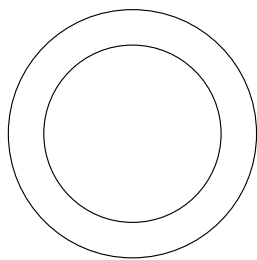
Date :

Rev : 1

Details :



COUPE A-A



dcw.

Name : **LAMP GRAS**

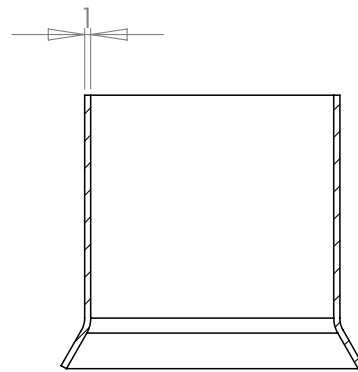
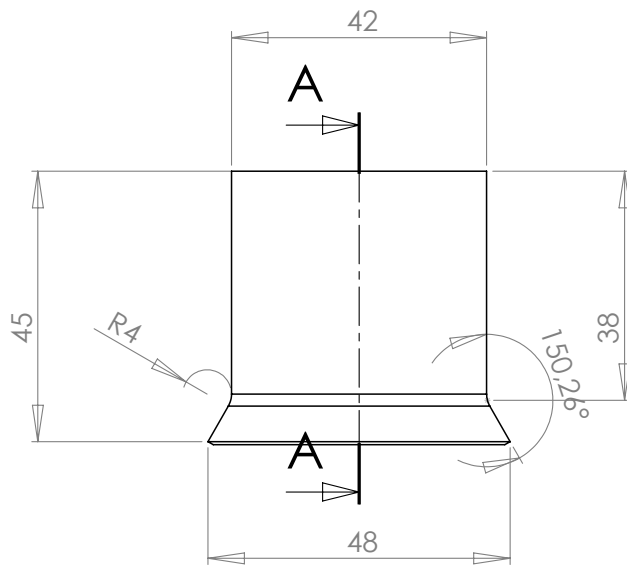
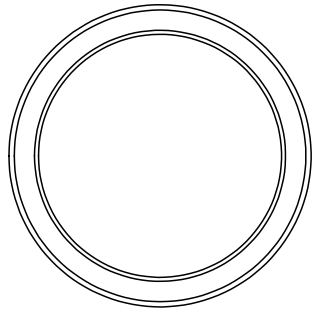
Part : **FIXATION PIECE**

Date :

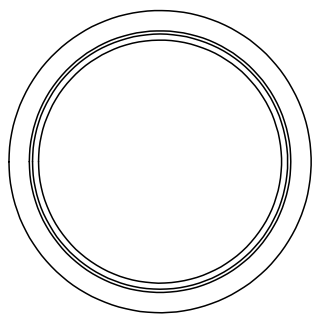
Rev : 1

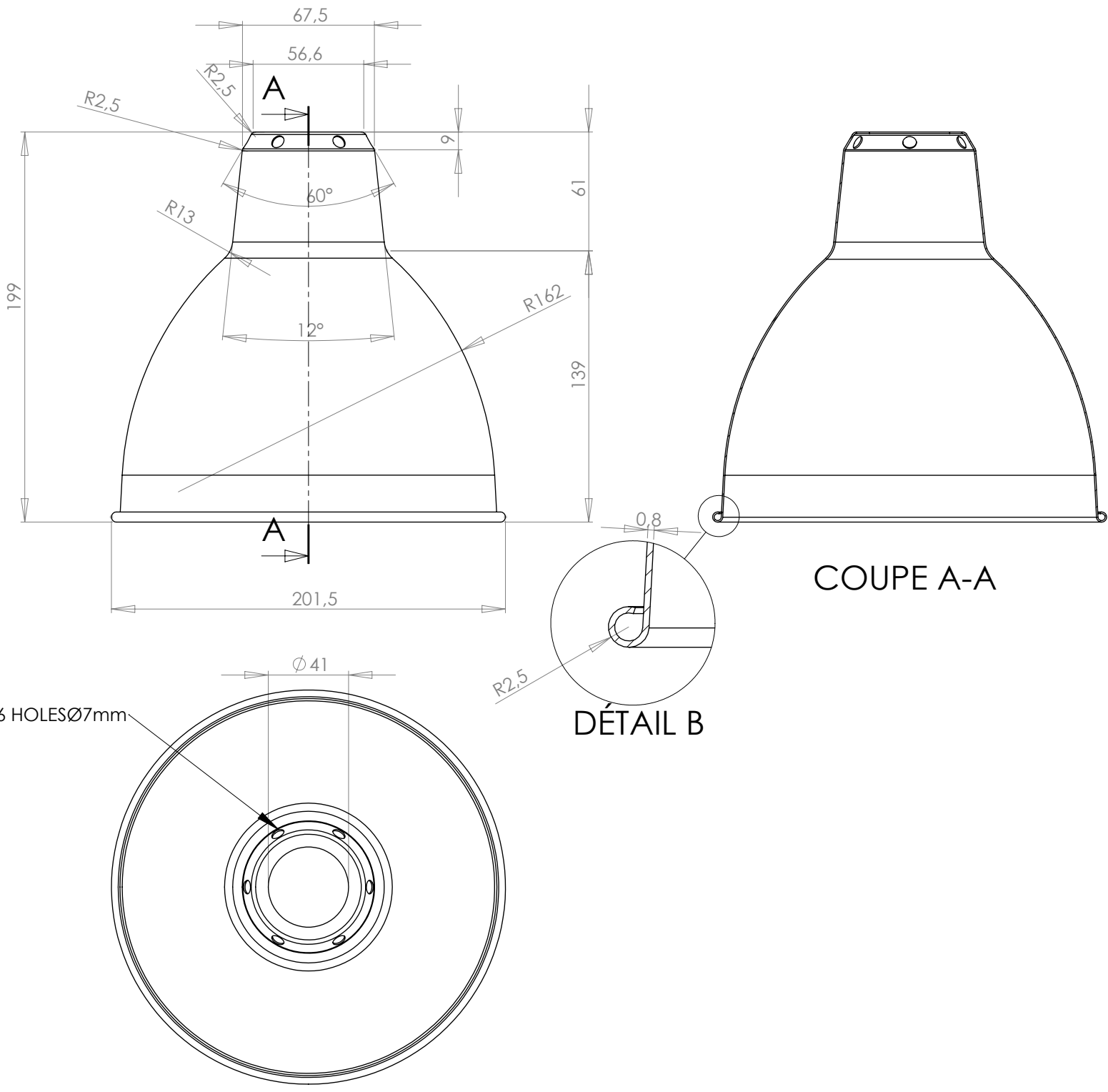
Materials : PAINTED STEEL / CHROMED STEEL

Details :



COUPE A-A





RANGE : LAMPE GRAS	REF :	MATERIAL/FINISHING : PAINTED STEEL - WHITE INSIDE
PART : SHADE ROUND LARGE		
REV N° : 1		