



Qty	Piece	Finishing			
1	COVER	BLACK SATIN	1	COVERING PIECE	BLACK SATIN
1	WEIGHT	BLACK SATIN	1	FIXATION PIECE	BLACK SATIN
1	BASE	BLACK SATIN	1	ROUND SHADE	BLACK OUTSIDE / WHITE INSIDE
1	VERTICAL TUBE	BLACK SATIN	1	BULBHOLDER SPACER	CHROME
1	S TUBE	BLACK SATIN	1	BULBHOLDER SCREW	CHROME
1	L TUBE	BLACK SATIN	1	BULBHOLDER	
1	HANDLE	BLACK SATIN	3	M3 x 4 SCREW	BLACK
1	HANDLE WASHER	BLACK	3	M10 x 4 NUT	BLACK
1	TUBE 1	BLACK SATIN	1	M4 x 5 SCREW	BLACK
1	PLASTIC WASHER Ø40	RED	1	M5 x 10 PLASTIC SCREW	BLACK
1	PLASTIC WAHSER Ø30	RED	2	M4 x 3 SCREW	BLACK
2	PLIERS	BLACK SATIN	3	M6 x 7 SCREW	BLACK
1	TUBE 2	BLACK SATIN	1	THREAD 10X100	
1	JUNCTION PIECE	BLACK SATIN	1	SWITCH	

dcw.

Name : LAMP GRAS N°317 BL-SAT

Materials :

Part :

Date : 17/01/2013

Rev : 1

Details : LED System; Dimmer on base ; Black fabric wire



Qty	Piece	Finishing			
1	COVER	BLACK SATIN	1	COVERING PIECE	BLACK SATIN
1	WEIGHT	BLACK SATIN	1	FIXATION PIECE	BLACK SATIN
1	BASE	BLACK SATIN	1	ROUND SHADE	RED OUTSIDE / WHITE INSIDE
1	VERTICAL TUBE	BLACK SATIN	1	BULBHOLDER SPACER	CHROME
1	S TUBE	BLACK SATIN	1	BULBHOLDER SCREW	CHROME
1	L TUBE	BLACK SATIN	1	BULBHOLDER	
1	HANDLE	BLACK SATIN	3	M3 x 4 SCREW	BLACK
1	HANDLE WASHER	BLACK	3	M10 x 4 NUT	BLACK
1	TUBE 1	BLACK SATIN	1	M4 x 5 SCREW	BLACK
1	PLASTIC WASHER Ø40	RED	1	M5 x 10 PLASTIC SCREW	BLACK
1	PLASTIC WAHSER Ø30	RED	2	M4 x 3 SCREW	BLACK
2	PLIERS	BLACK SATIN	3	M6 x 7 SCREW	BLACK
1	TUBE 2	BLACK SATIN	1	THREAD 10X100	
1	JUNCTION PIECE	BLACK SATIN	1	SWITCH	

dcw.

Name : LAMP GRAS N°317 BL-RED

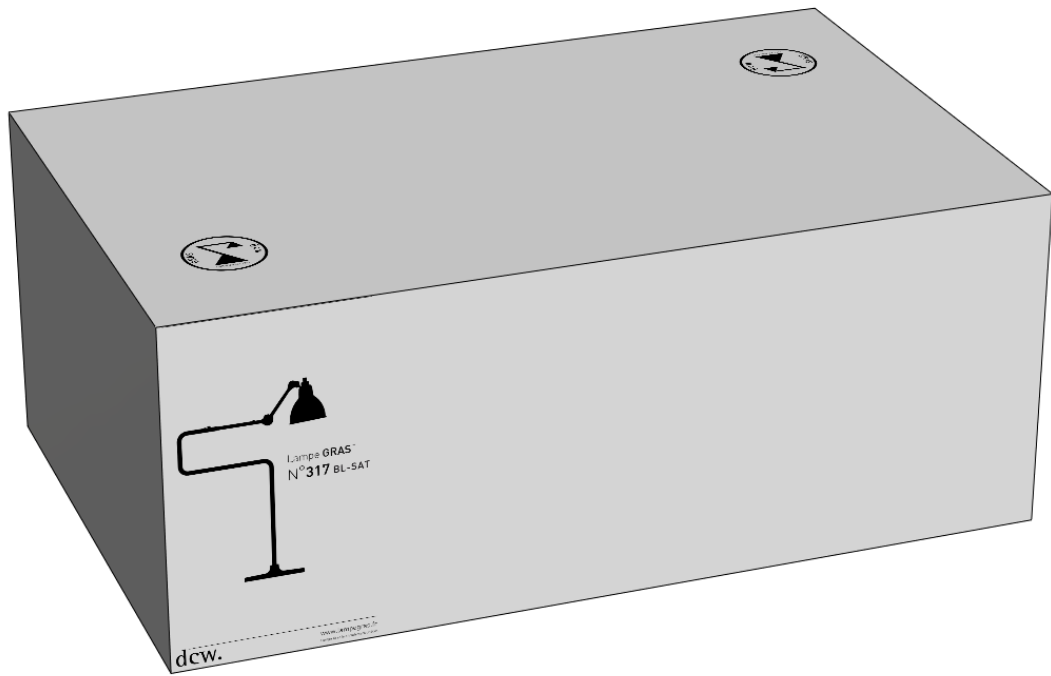
Materials :

Part :

Date : 17/01/2013

Rev : 1

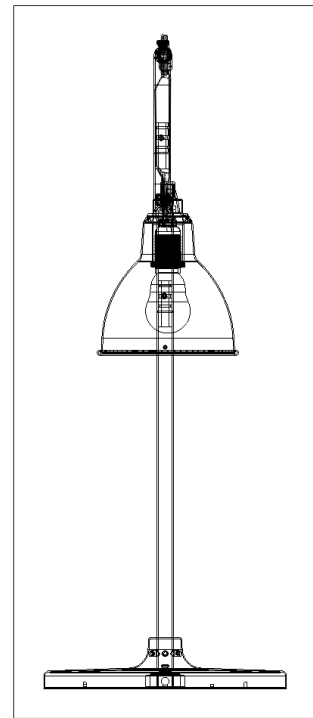
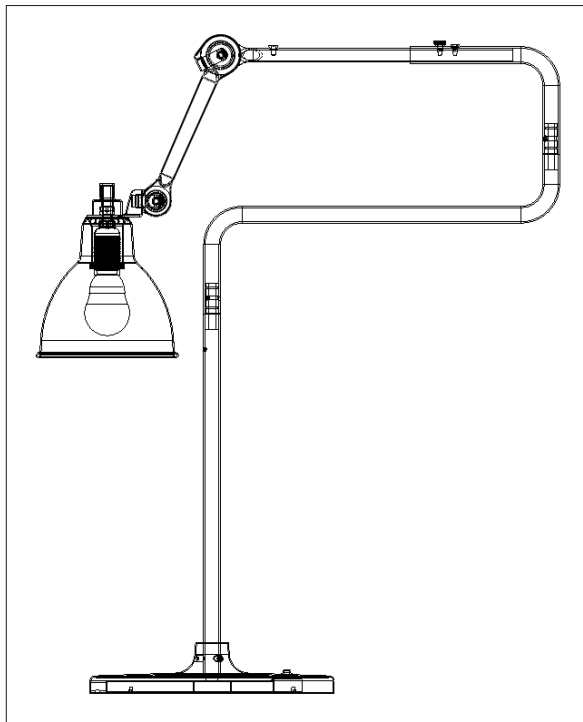
Details : LED System; Dimmer on base ; Black fabric wire



585

305

720



dcw.

Name : LAMP GRAS

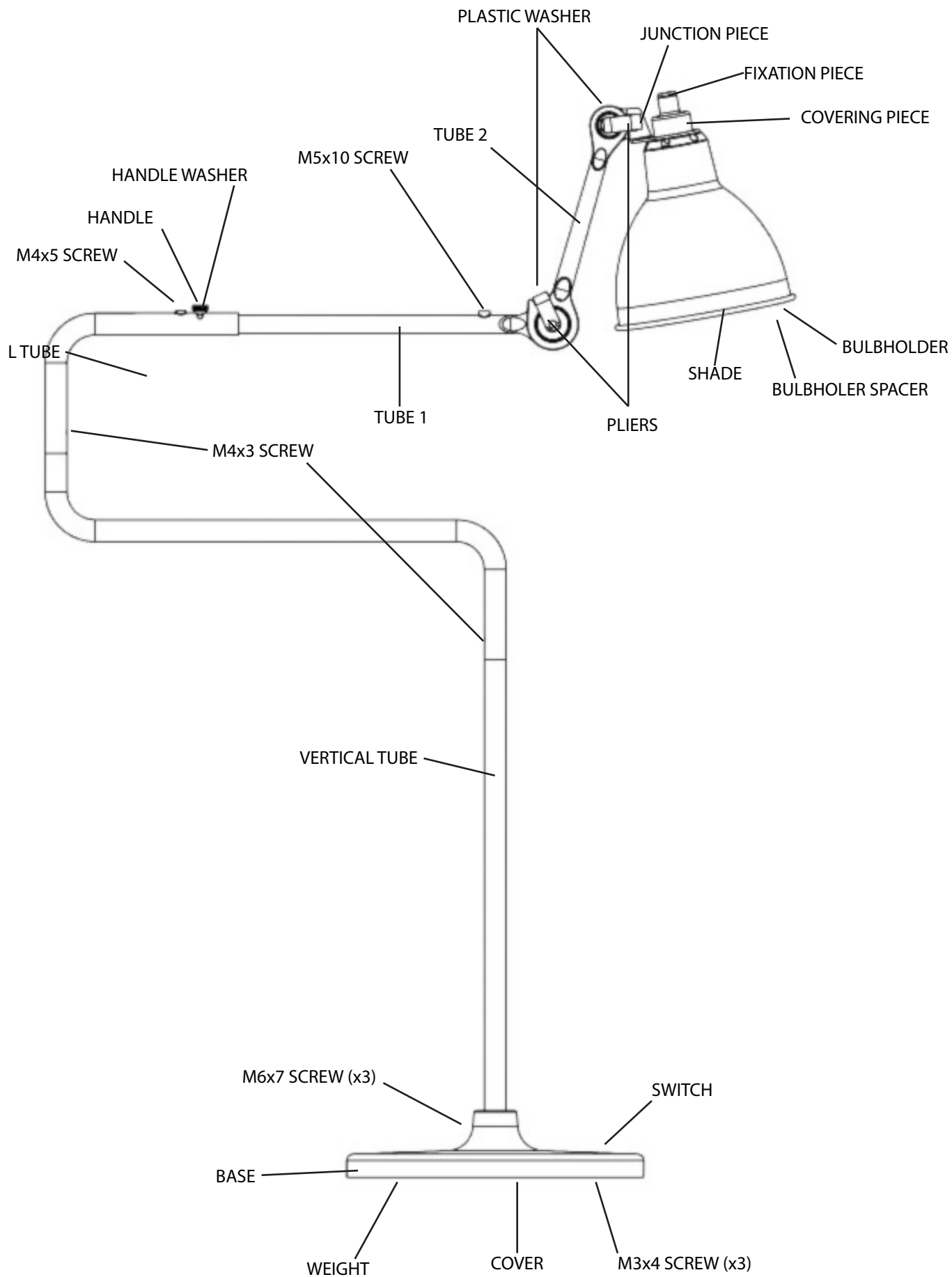
Part : N°317 PACKAGE

Date :

Rev : 1

Matérials :

Details :



dcw.

Name : LAMP GRAS N°317

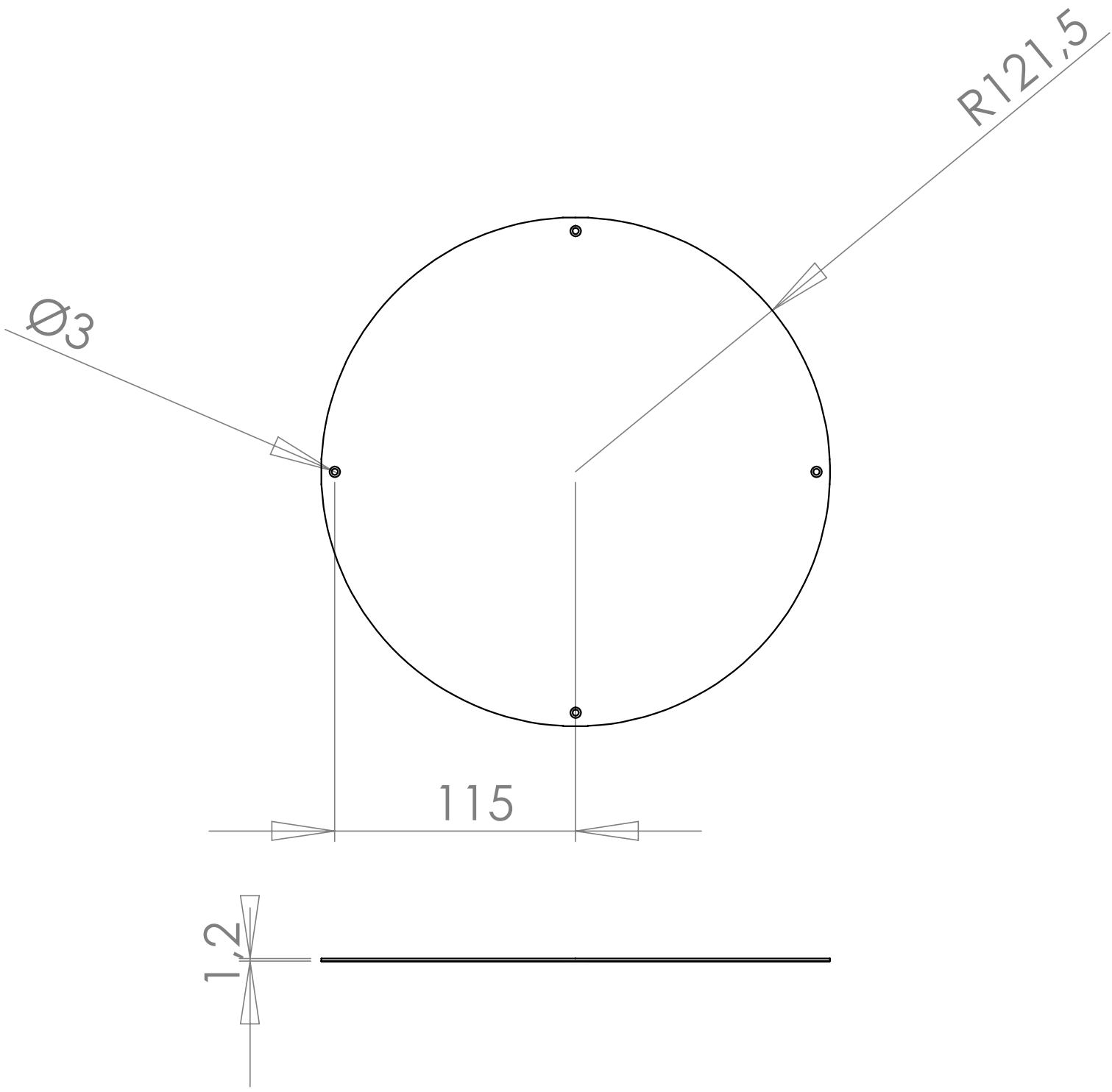
Matériaux :

Part : ELEMENTS

Date : 17/01/2013

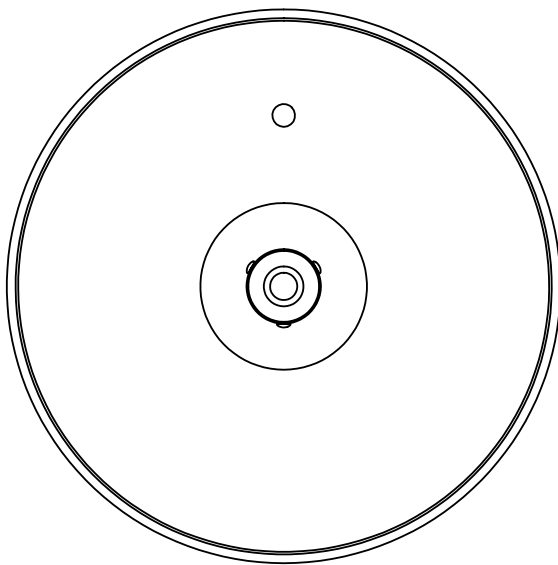
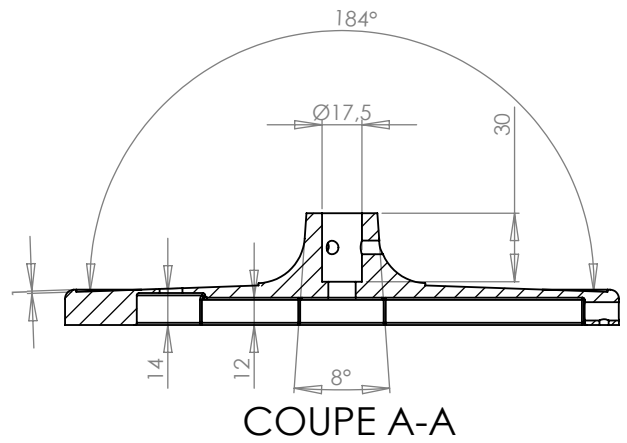
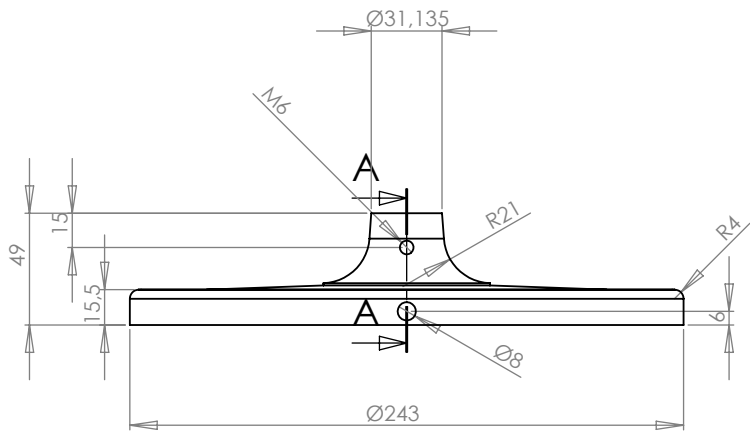
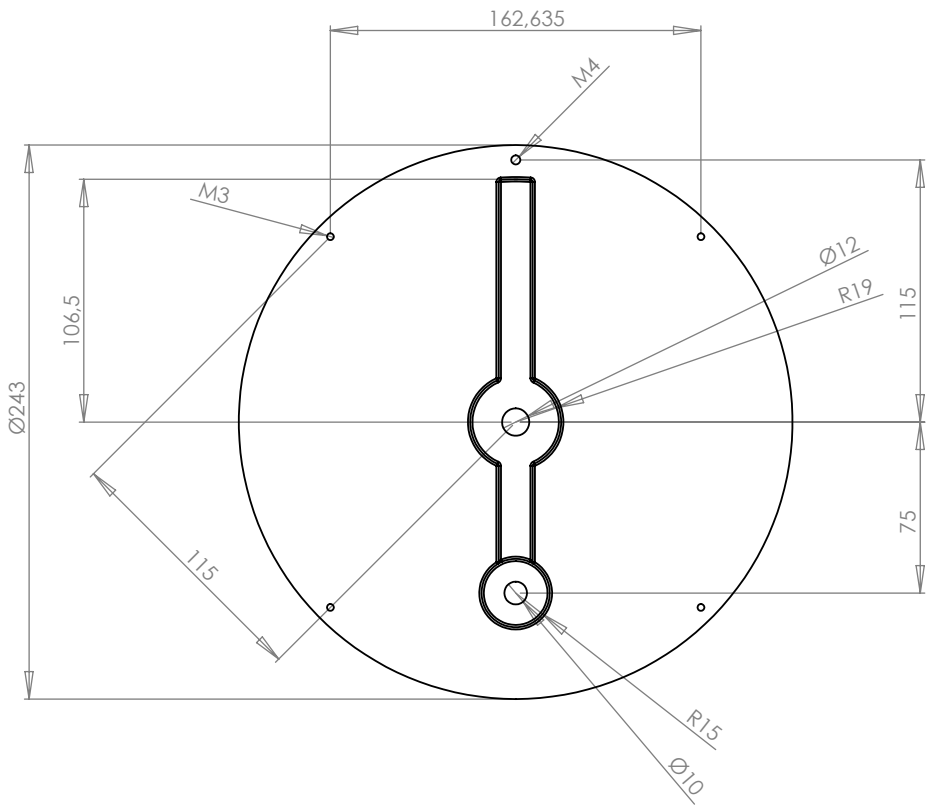
Rev : 1

Details :



dcw.

Name : LAMP GRAS N°317		Materials : PAINTED STEEL
Part : COVER		
Date :	Rev : 2	Details :



dcw.

Name : LAMP GRAS N°317

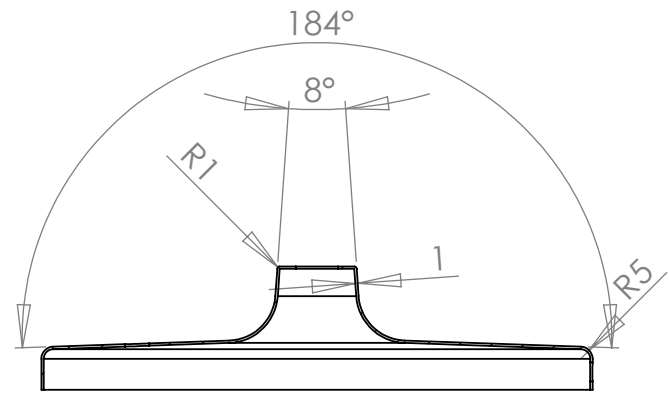
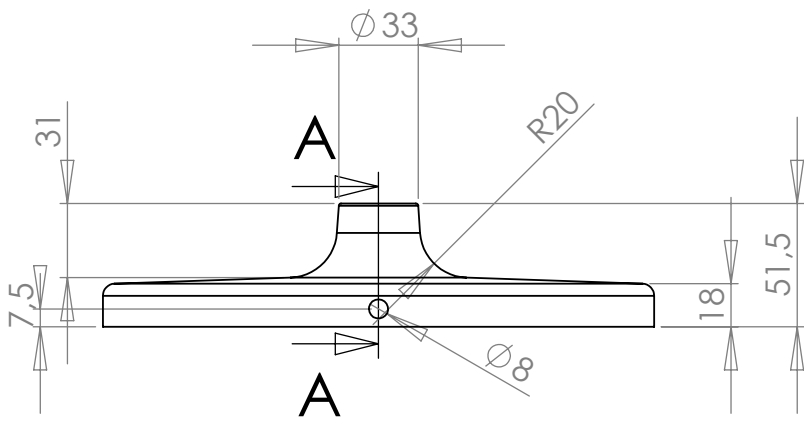
Materials : PAINTED STEEL CAST

Part : WEIGHT

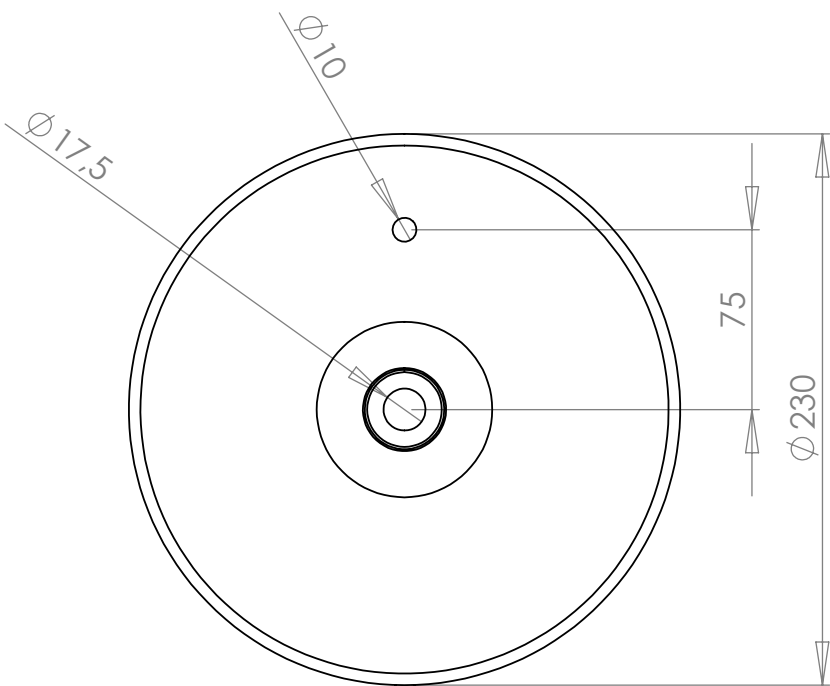
Date :

Rev : 2

Details :



COUPE A-A



dcw.

Name : LAMP GRAS N°316/317

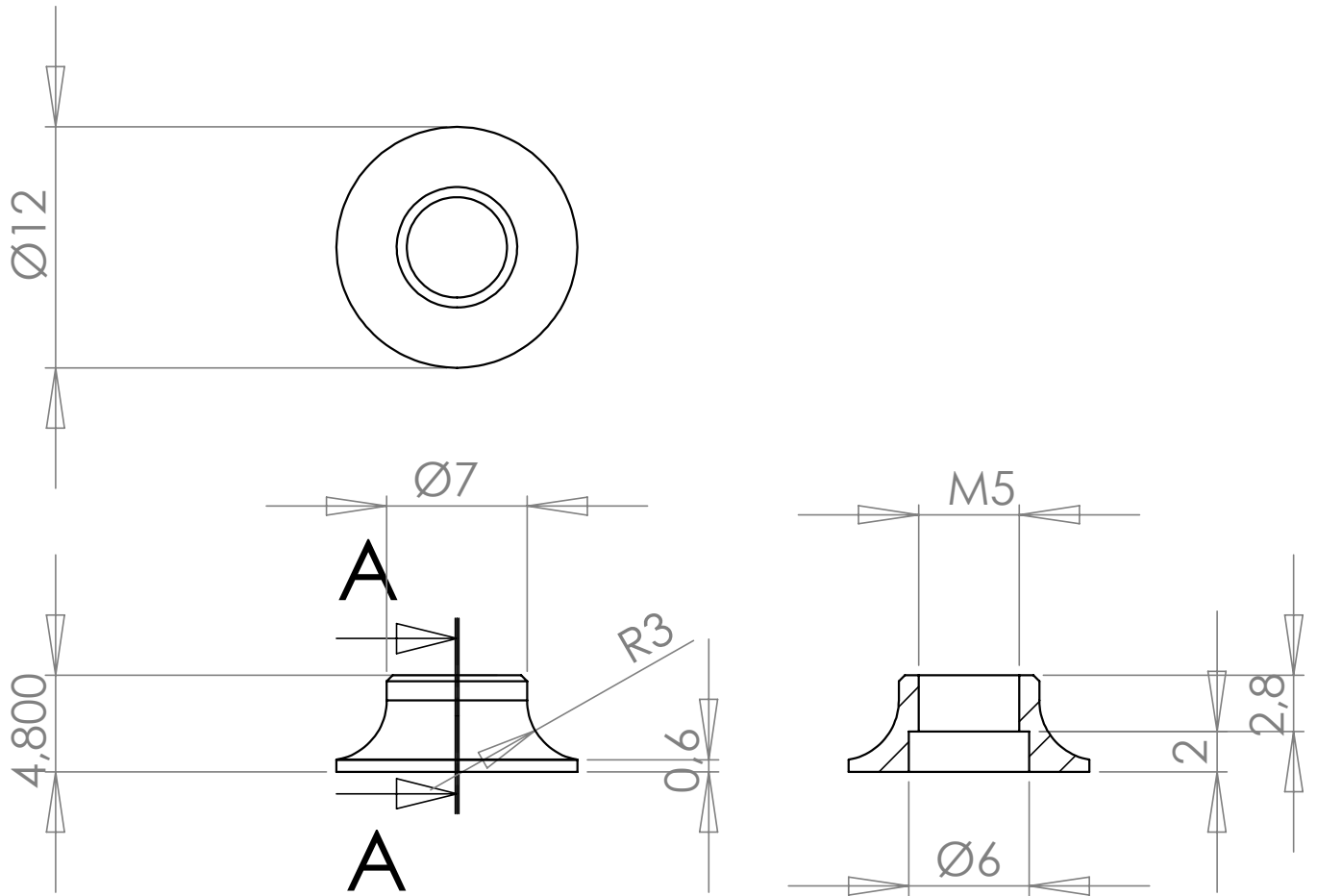
Materials : PAINTED STEEL

Part : BASE

Date : 17/01/2013

Rev : 1

Details :



COUPE A-A

dcw.

Name : **LAMP GRAS N°317**

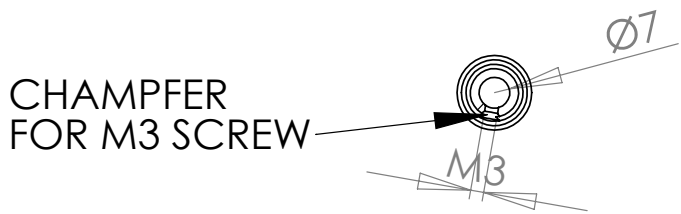
Matériaux : PAINTED STEEL

Part : **Switch cap**

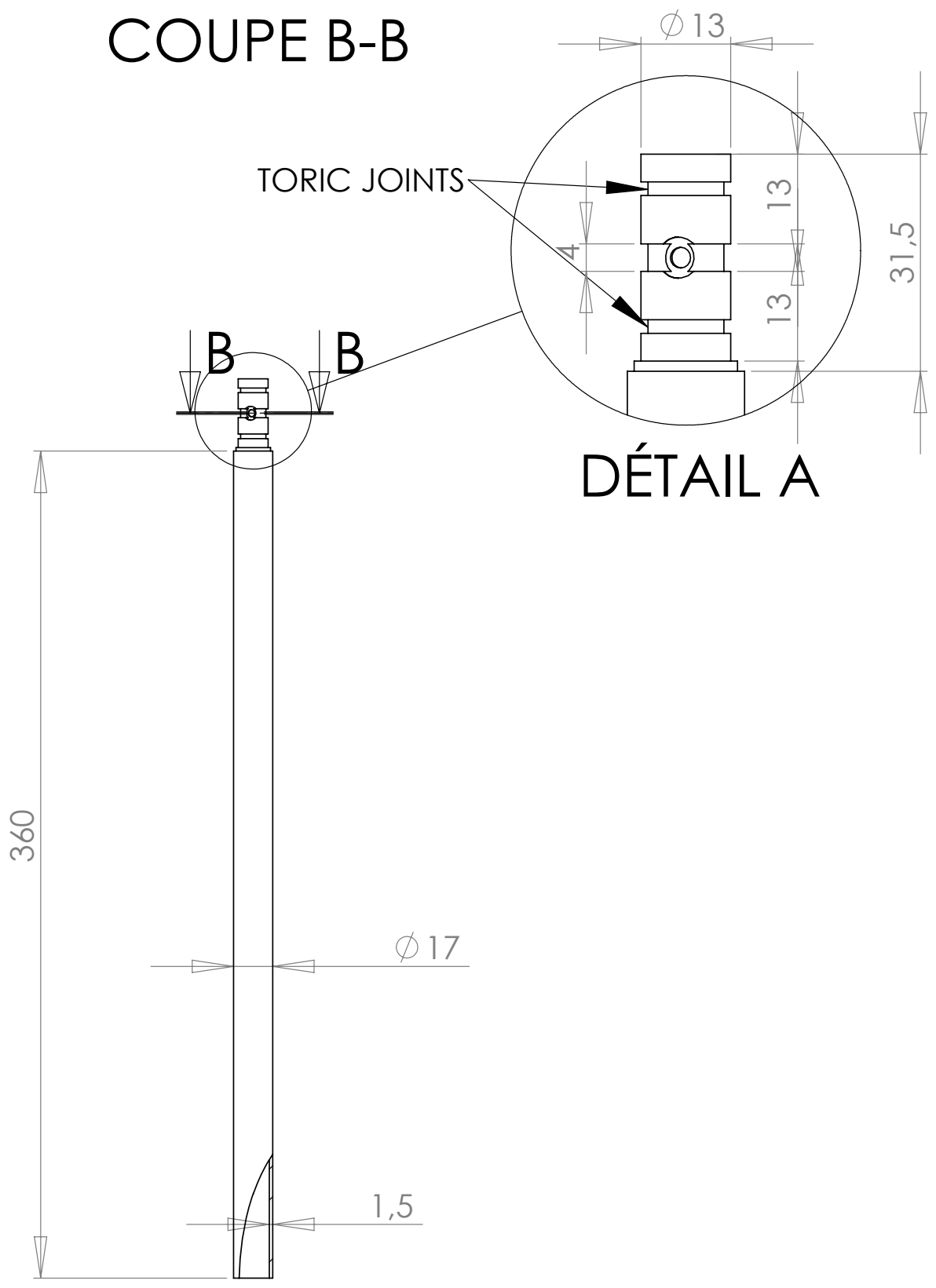
Date :

Rev : 1

Details :



COUPE B-B



DÉTAIL A

dcw.

Name : LAMP GRAS N°317

Materials : PAINTED STEEL

Part : VERTICAL TUBE

Date : 17/01/2013

Rev : 1

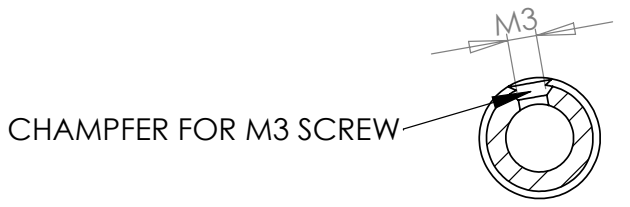
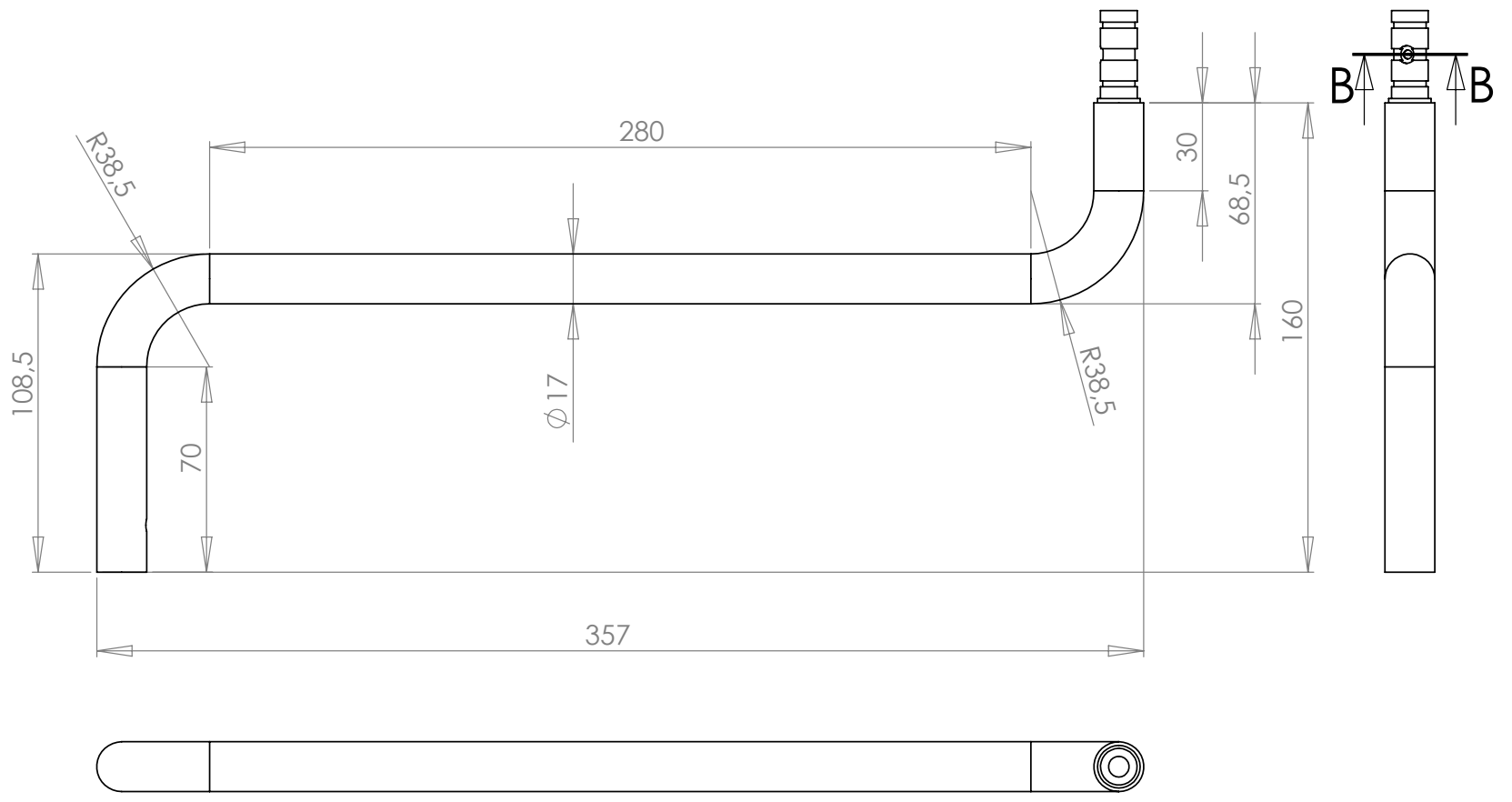
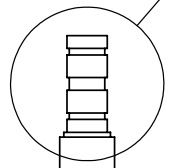
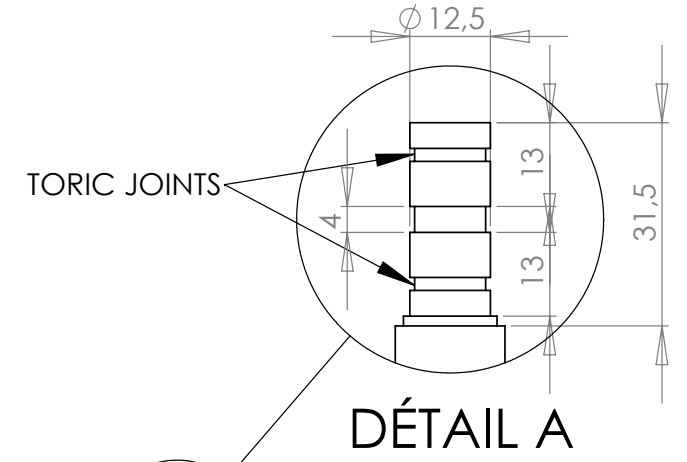
Details :

Name : LAMP GRAS
Part : S TUBE
Date : 17/01/2013

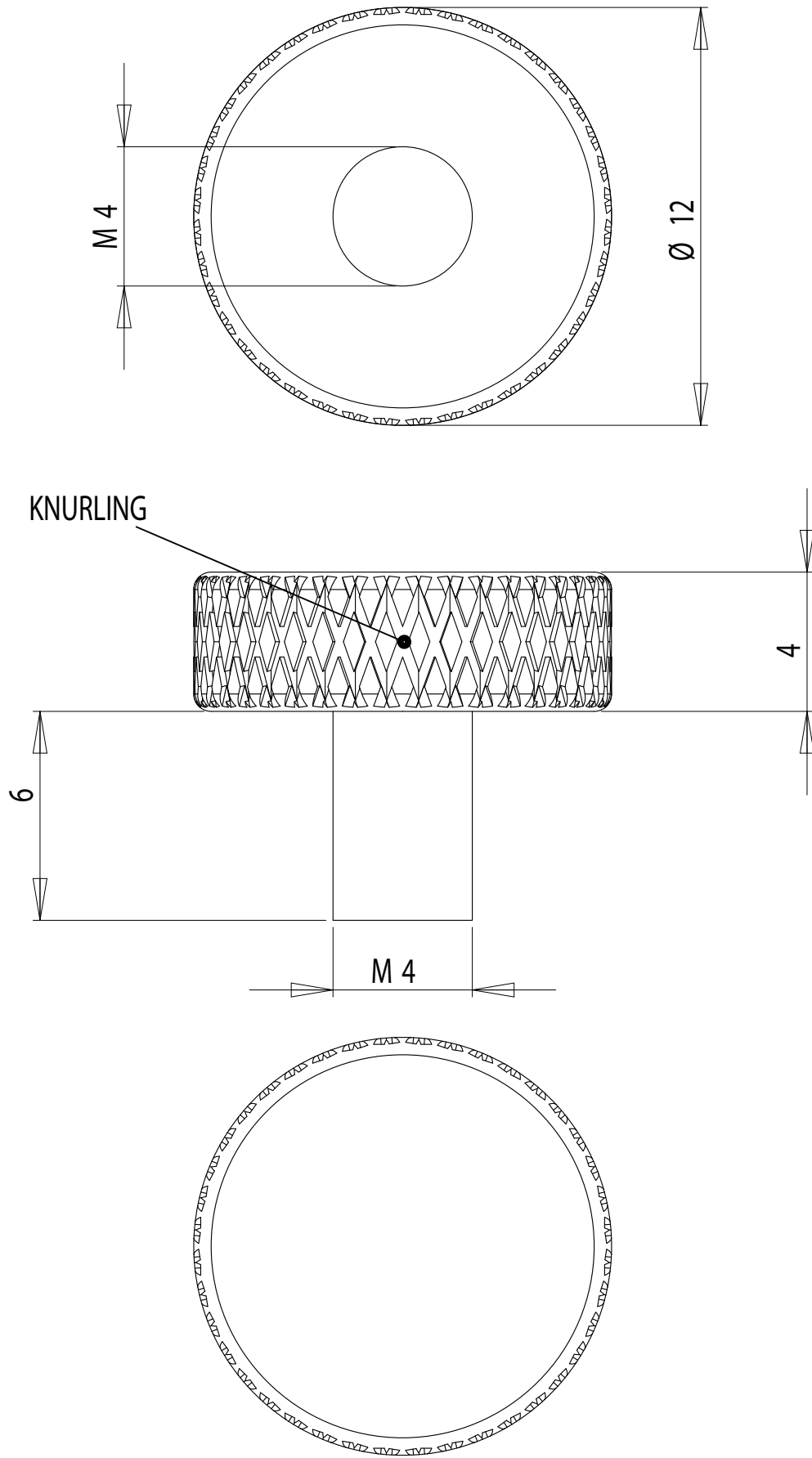
Rev : 1

Materials : PAINTED STEEL/CHROMED STEEL
Details :

dcw.



COUPE B-B



dcw.

Name : **LAMP GRAS**

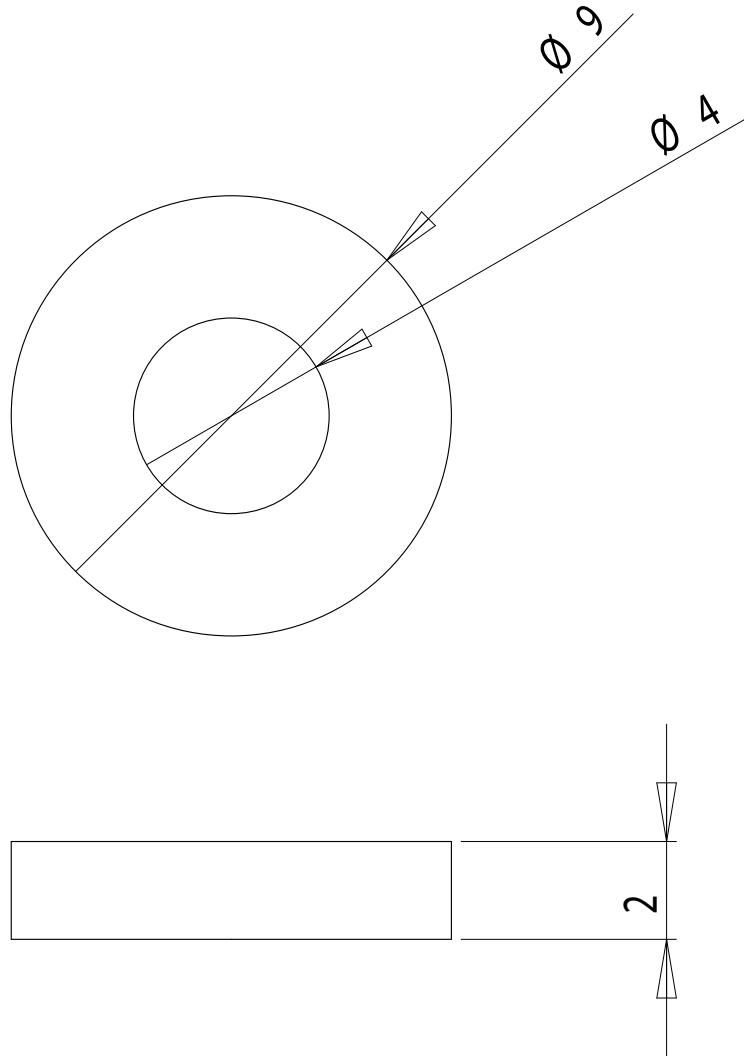
Materials : PAINTED STEEL

Part : **BREAKING HANDLE**

Date : 17/01/2013

Rev : 1

Details :



dcw.

Name : **LAMP GRAS**

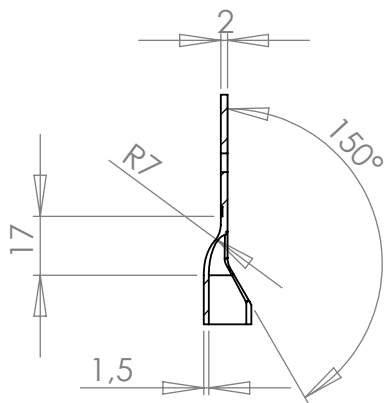
Materials : PLASTIC

Part : **HANDLE WASHER**

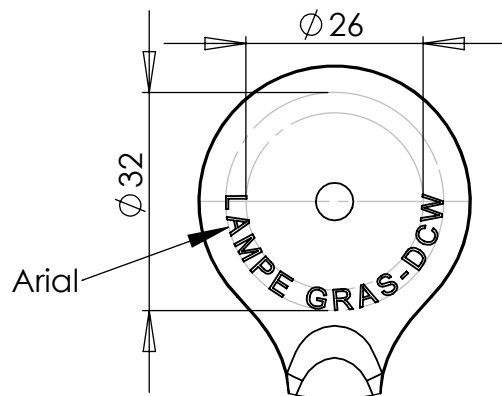
Date : 17/01/2013

Rev : 1

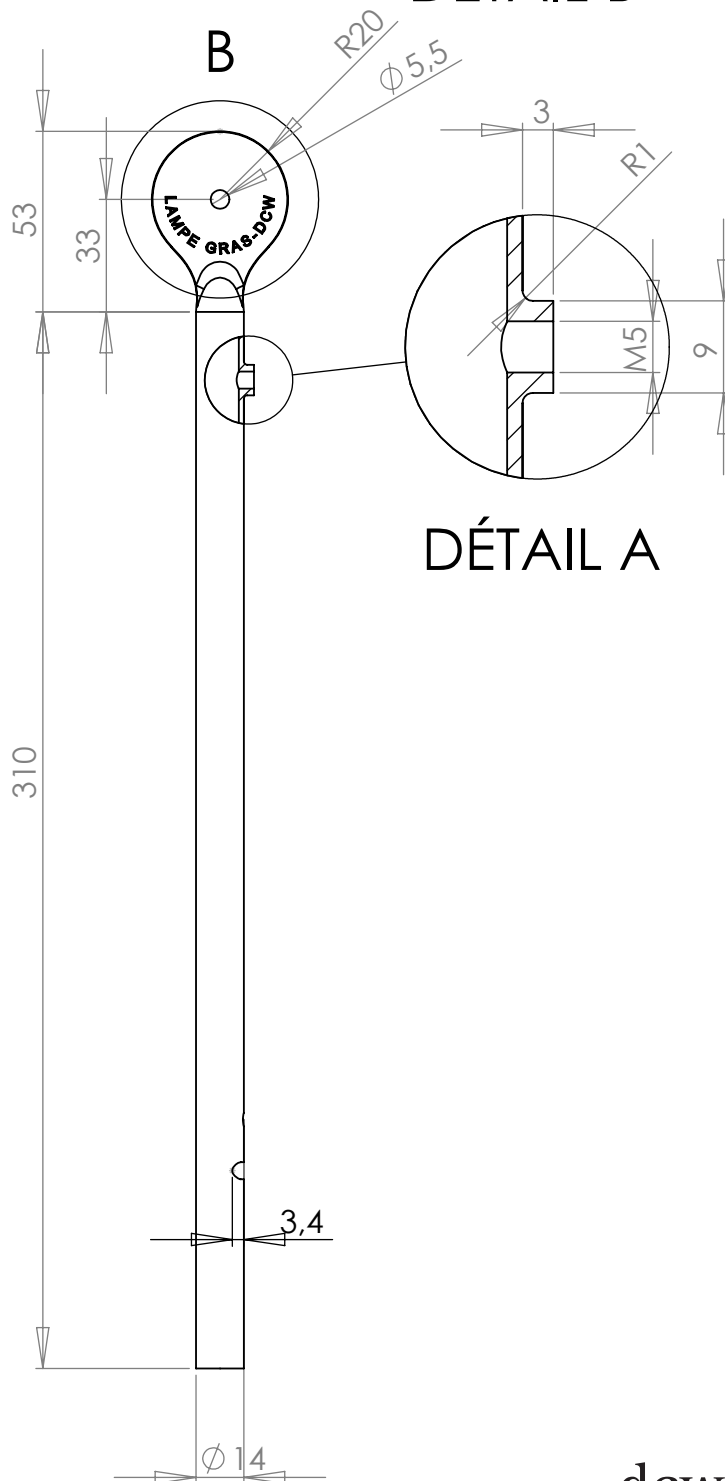
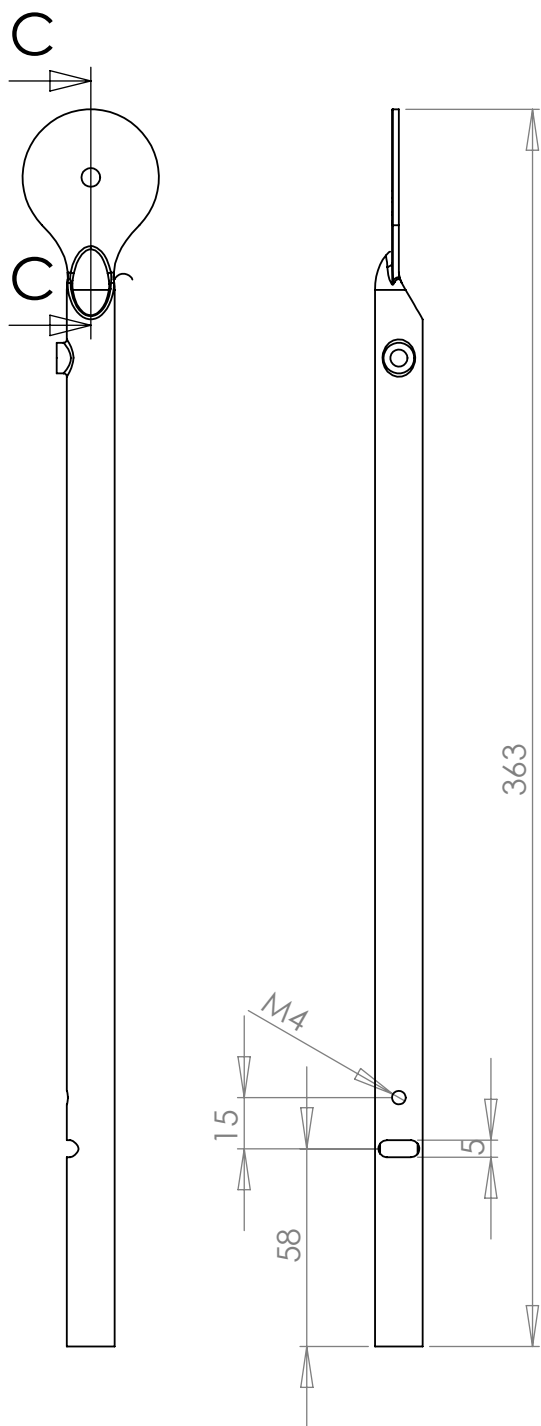
Details :



COUPE C-C



DÉTAIL B



DÉTAIL A

dcw.

Name : LAMP GRAS

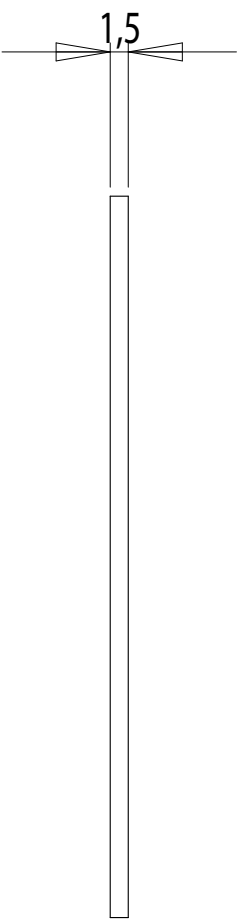
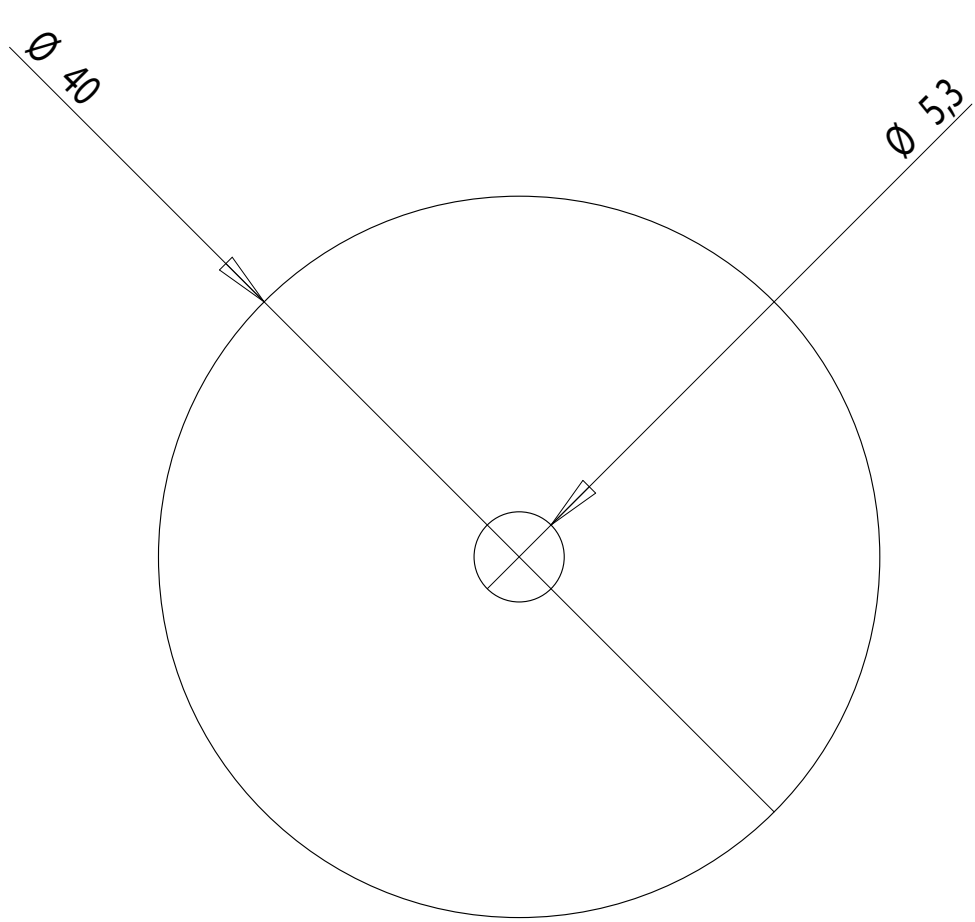
Matériaux : PAINTED STEEL

Part : TUBE 1 – 363

Date : 17/01/2013

Rev : 1

Details :



PLIERS SUPPLIED BY DCW

dcw.

Name : LAMP GRAS

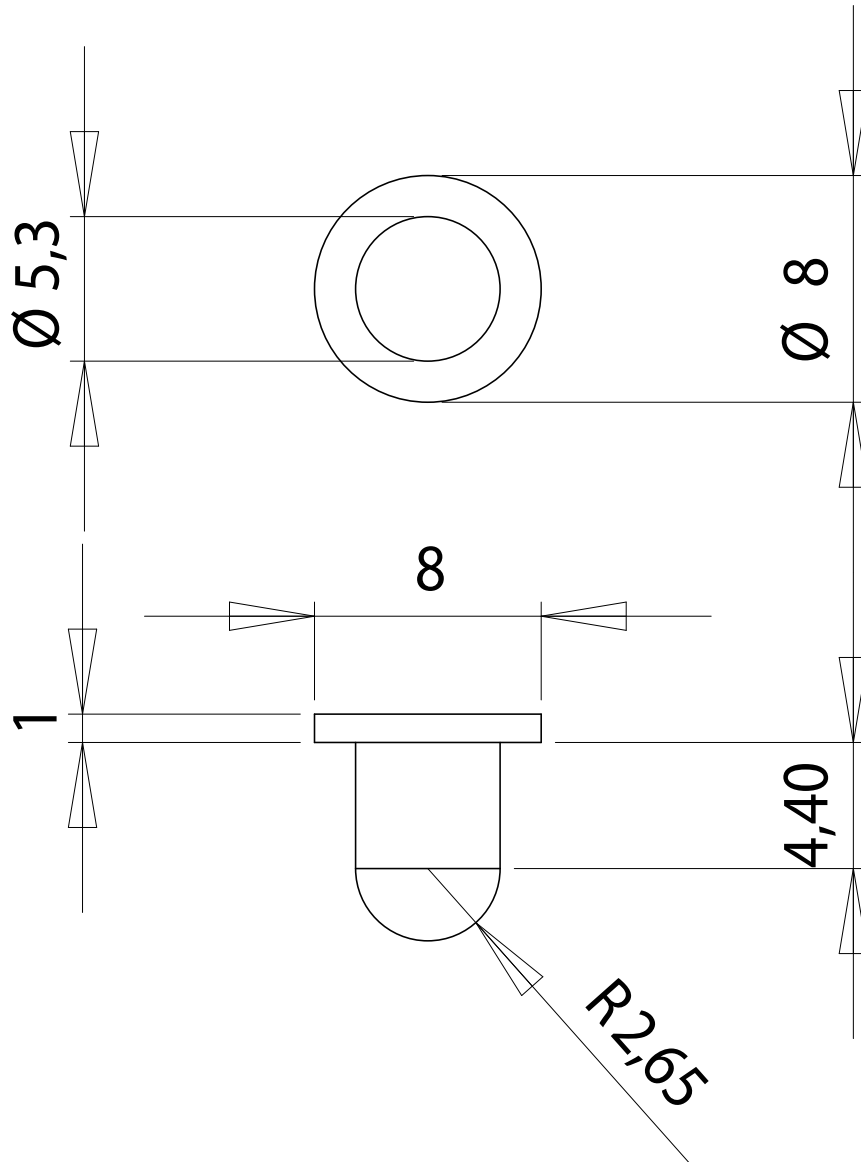
Materials : PLASTIC

Part : PLASTIC WASHER – Ø40

Date : 17/01/2013

Rev : 1

Details :



dcw.

Name : LAMP GRAS

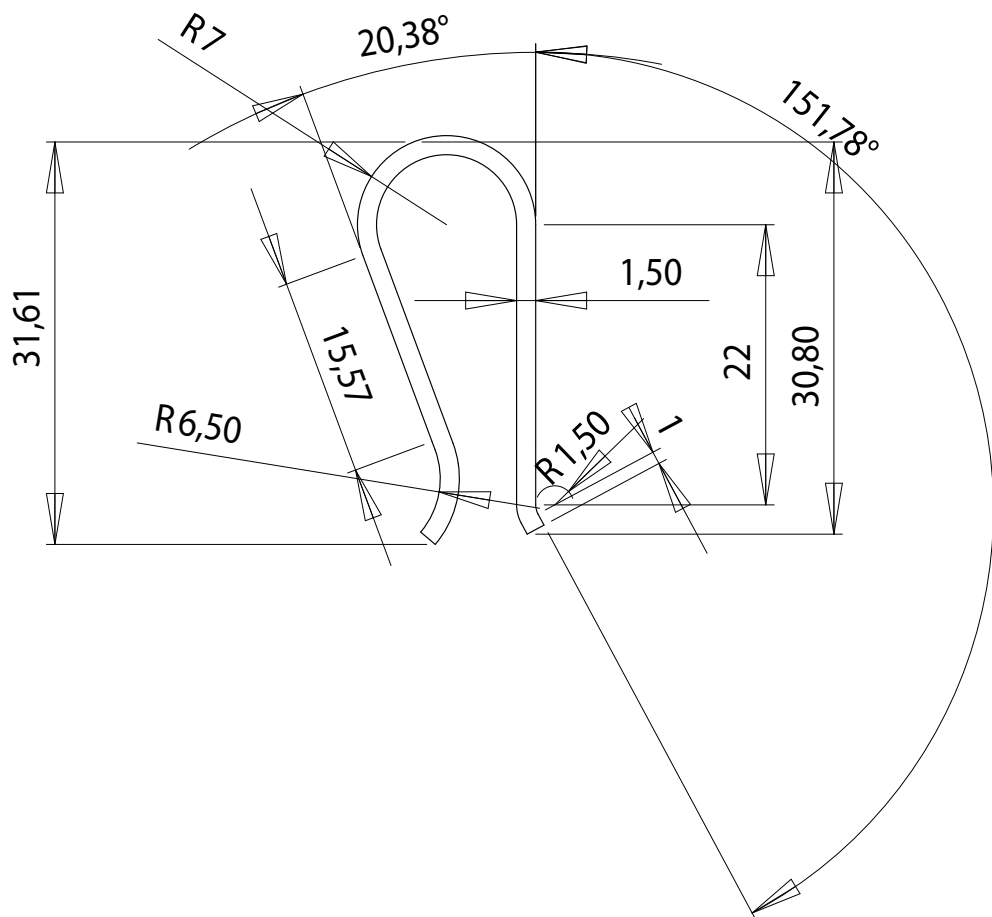
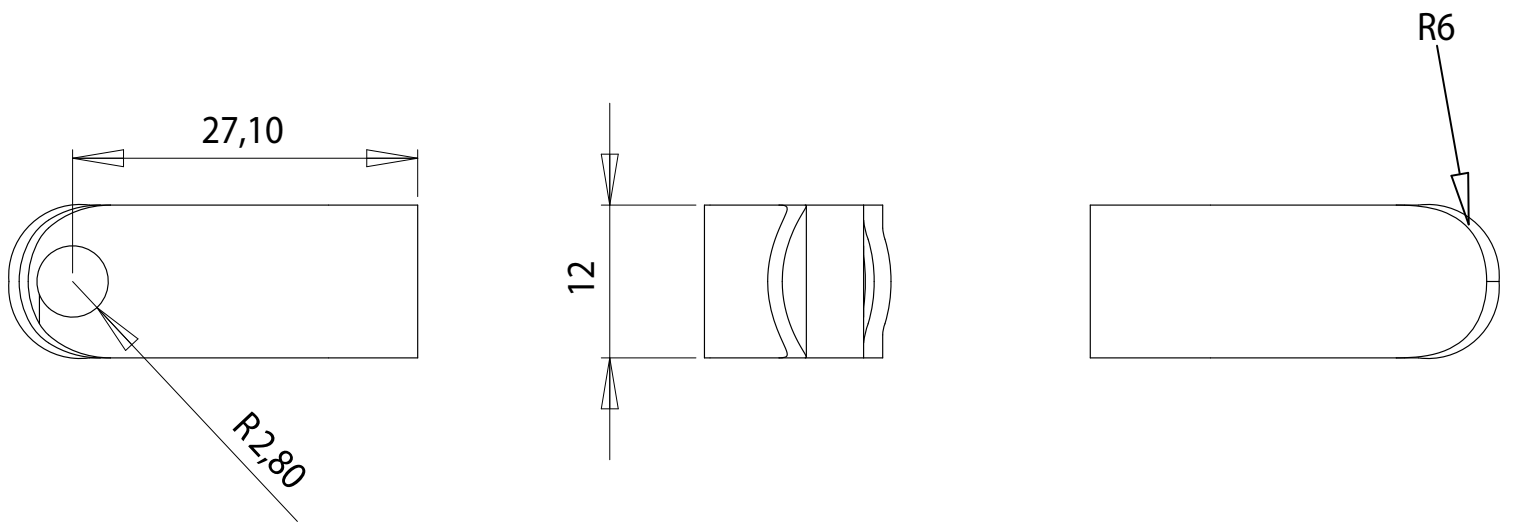
Materials : CHROMED STEEL

Part : AXIS

Date : 17/01/2013

Rev : 1

Details :



PLIERS SUPPLIED BY DCW

dcw.

Name : LAMP GRAS

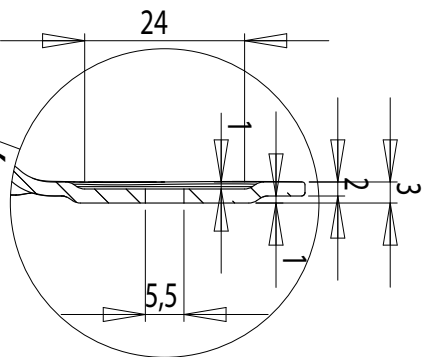
Materials : SPRING PAINTED STEEL / CHROMED STEEL

Part : PLIERS

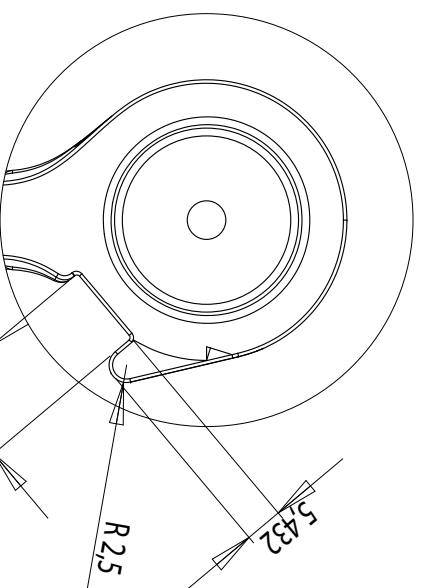
Date : 17/01/2013

Rev : 1

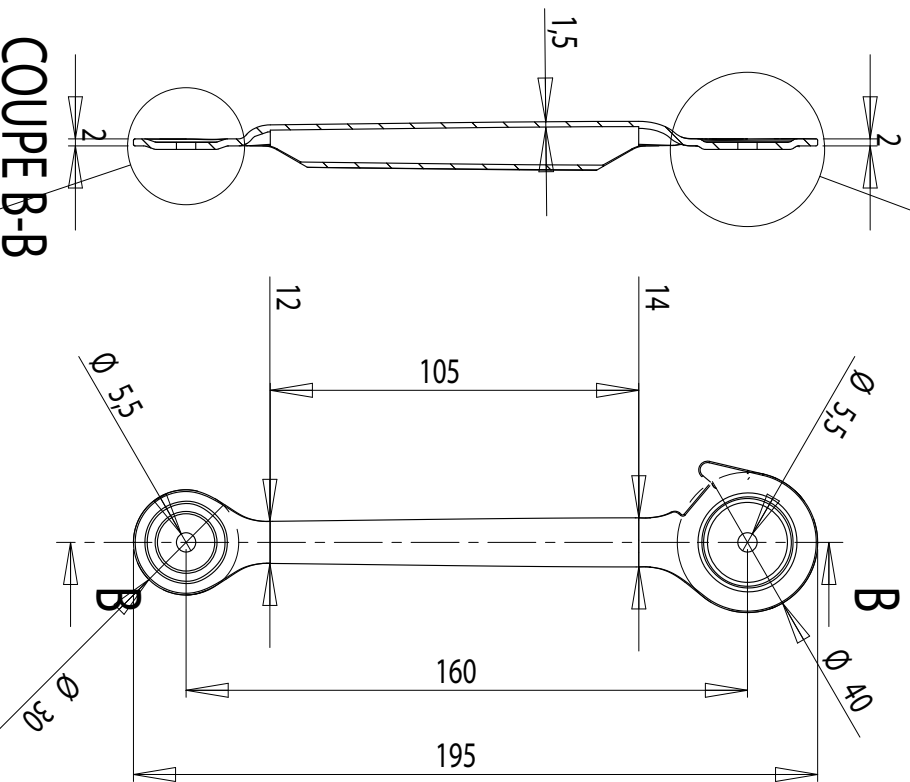
Details :



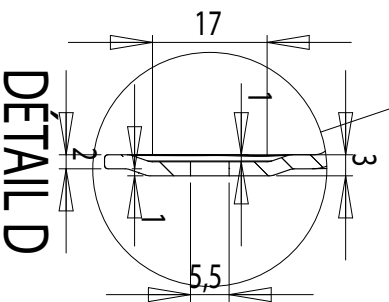
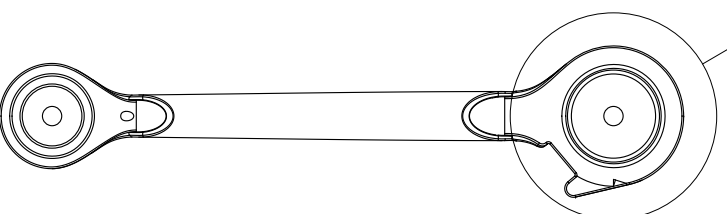
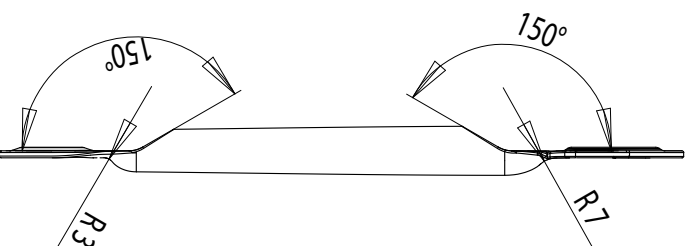
DÉTAIL C



DÉTAIL A



COUPE B-B



DÉTAIL D



Name : LAMP GRAS

Materials : PAINTED STEEL/CHROMED STEEL

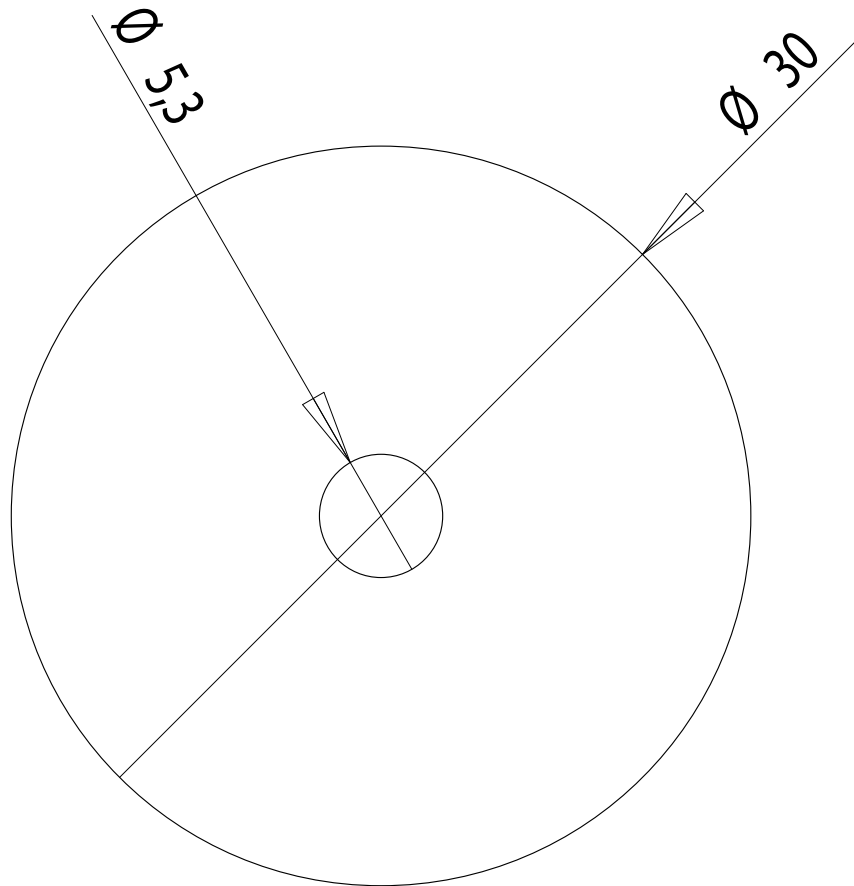
dcw.

Part : TUBE 2

Date : 17/01/2013

Rev : 1

Details :



PLIERS SUPPLIED BY DCW

dcw.

Name : LAMP GRAS

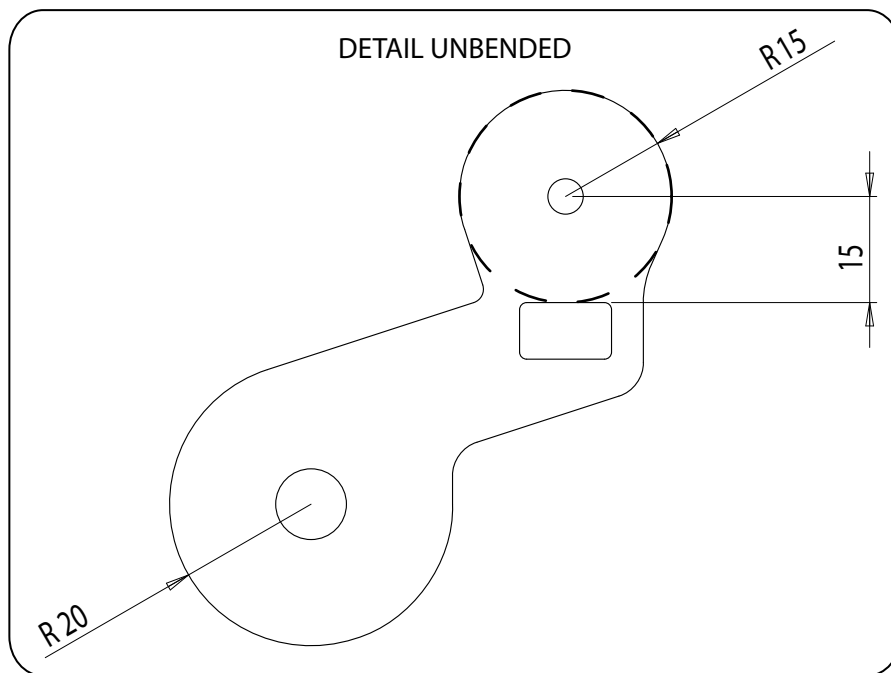
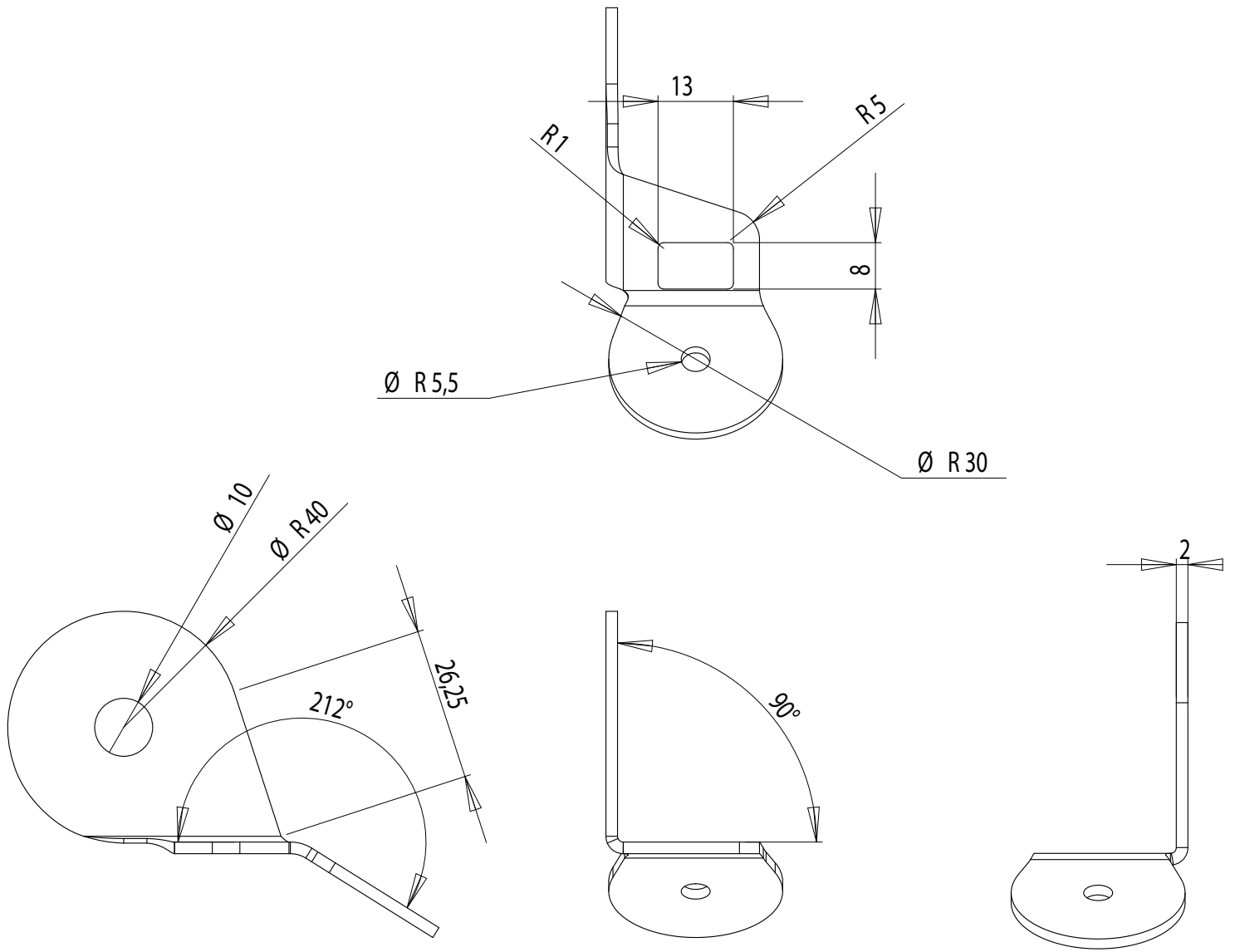
Materials : PLASTIC

Part : PLASTIC WASHER – $\varnothing 30$

Date : 17/01/2013

Rev : 1

Details :



dcw.

Name : **LAMP GRAS**

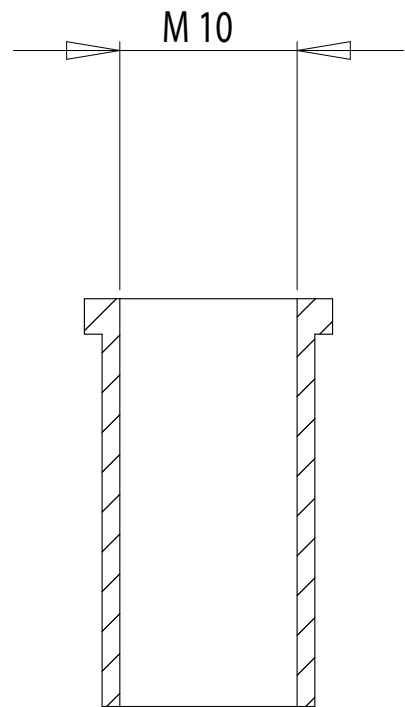
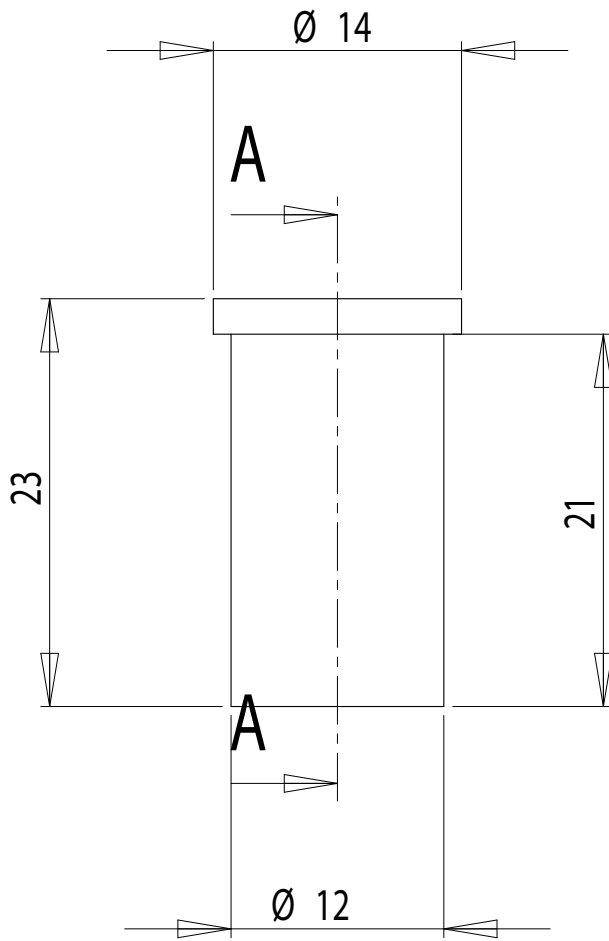
Materials : PAINTED STEEL / CHROMED STEEL

Part : **JUNCTION PIECE**

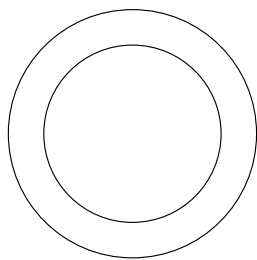
Date : 17/01/2013

Rev : 1

Details :



COUPE A-A



dcw.

Name : **LAMP GRAS**

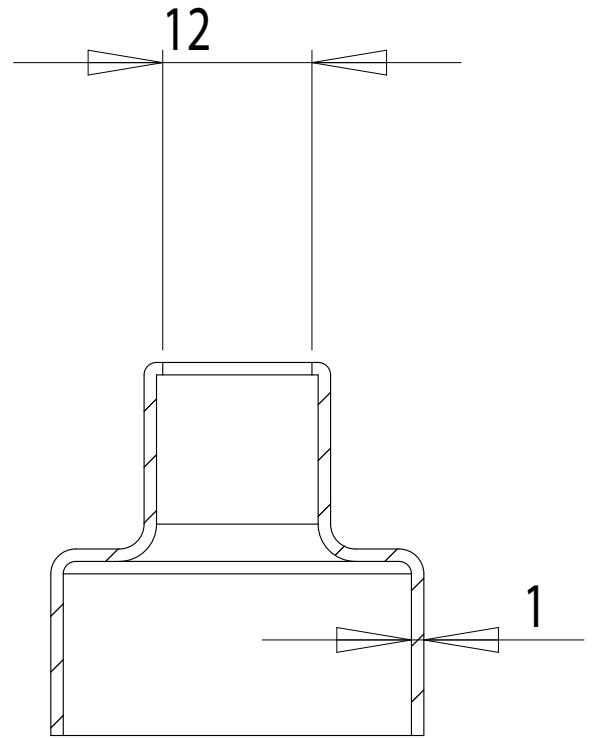
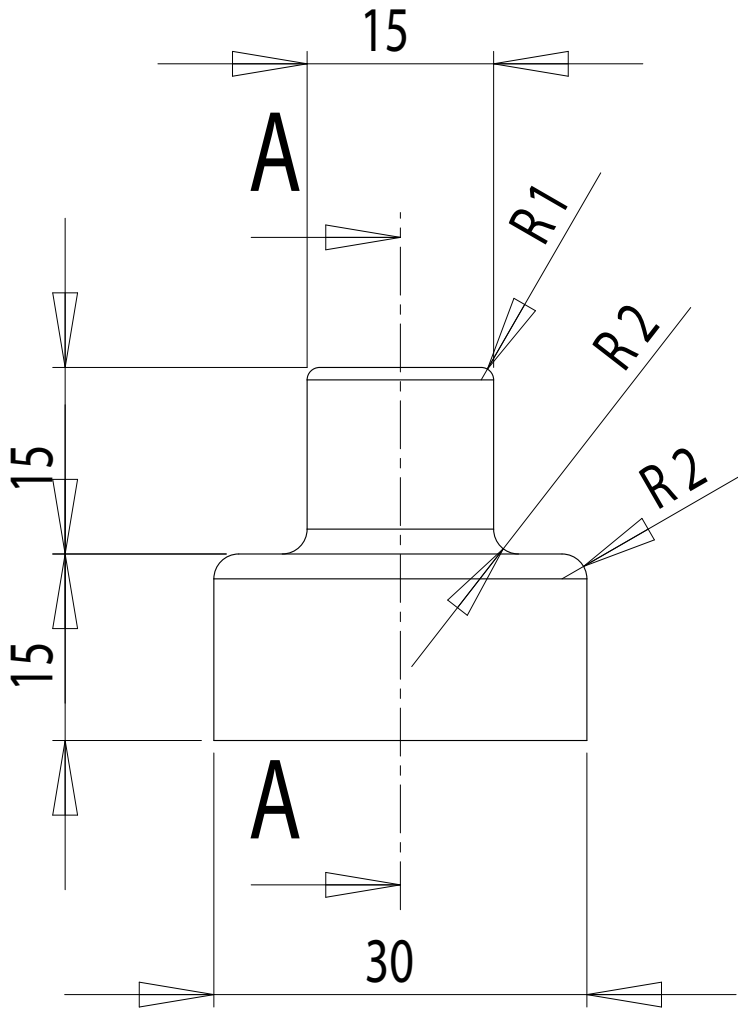
Part : **FIXATION PIECE**

Date : 17/01/2013

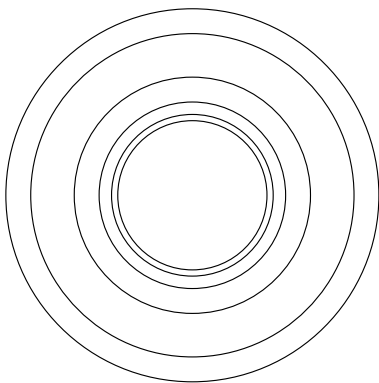
Rev : 1

Materials : PAINTED STEEL / CHROMED STEEL

Details :



COUPE A-A



dcw.

Name : **LAMP GRAS**

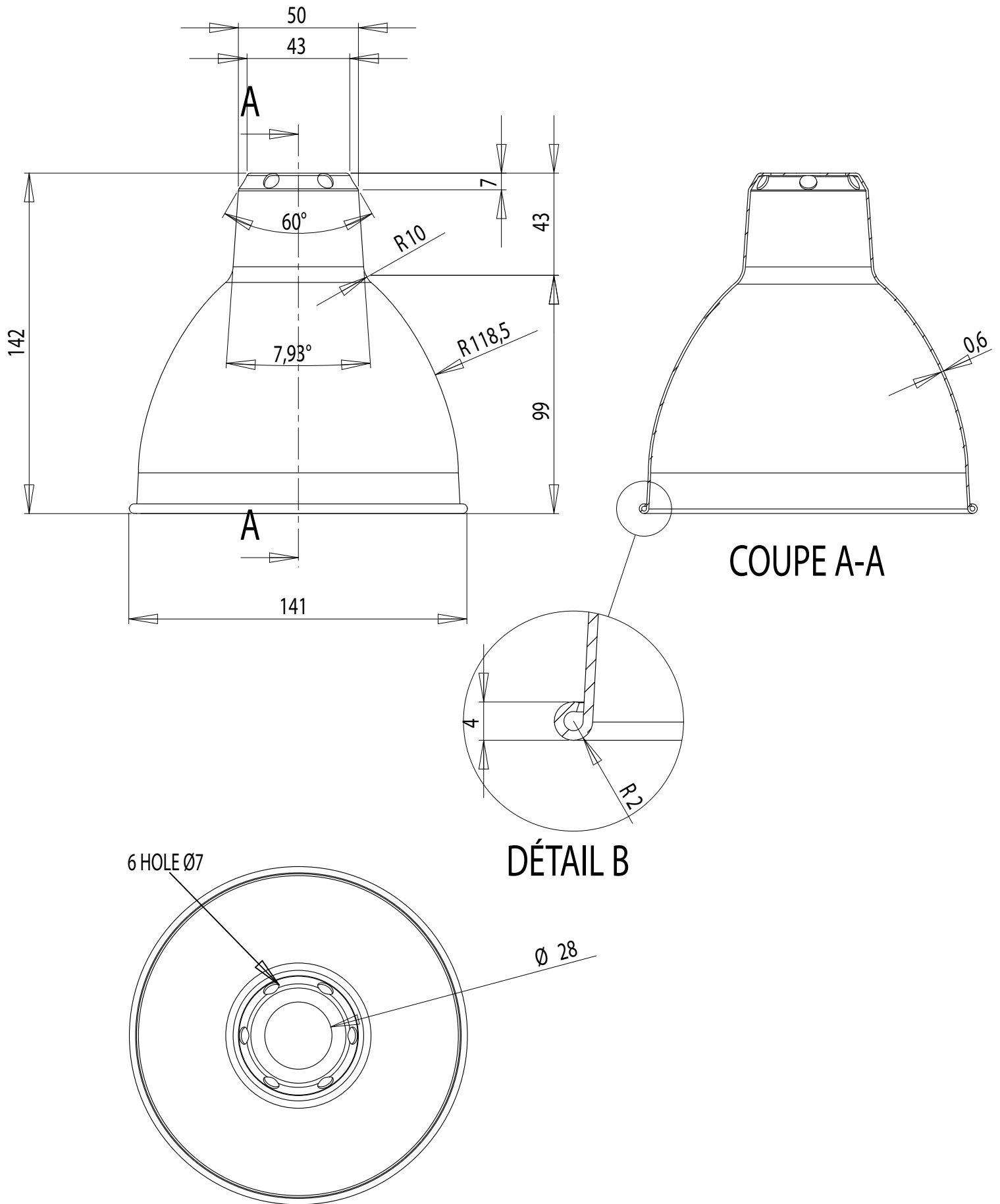
Materials : PAINTED STEEL / CHROMED STEEL

Part : **COVERING PIECE**

Date : 17/01/2013

Rev : 1

Details :



dcw.

Name : **LAMP GRAS**

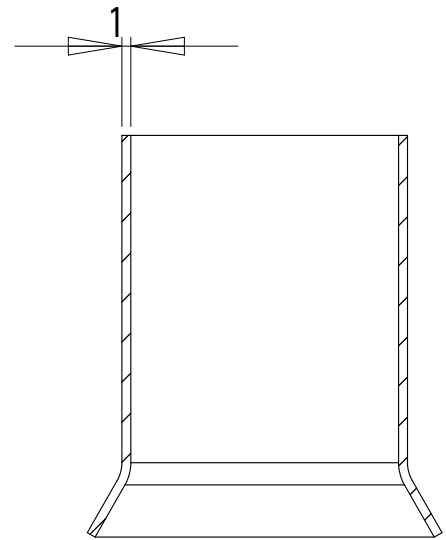
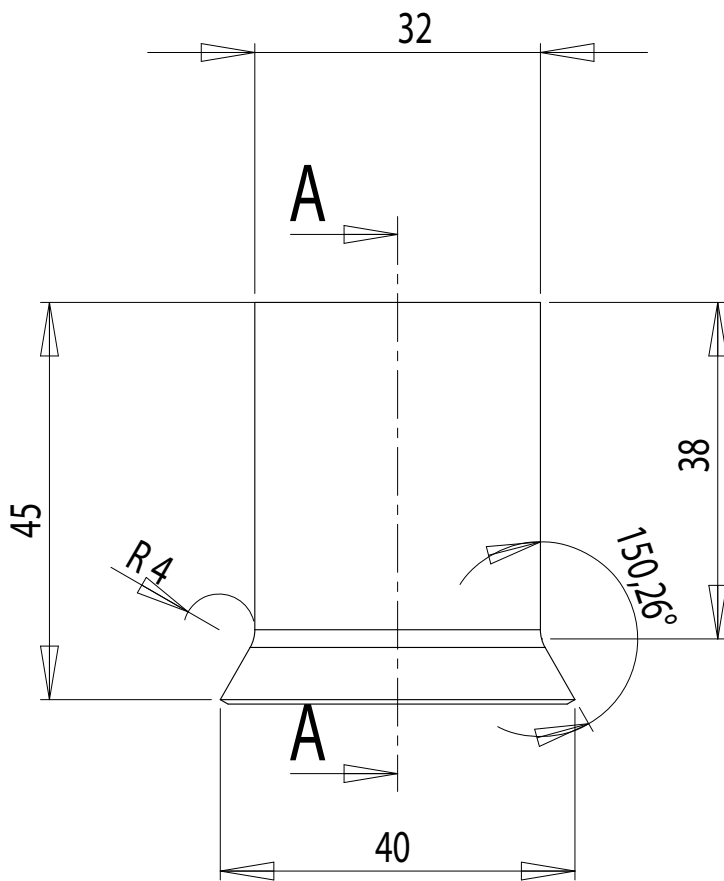
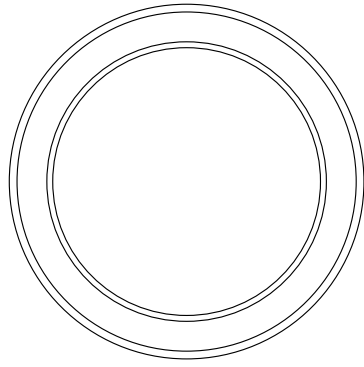
Materials : PAINTED STEEL/CHROMED STEEL

Part : **ROUND SHADE**

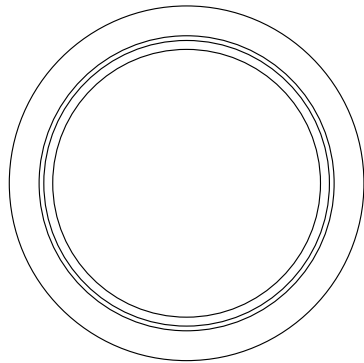
Date : 17/01/2013

Rev : 1

Details :



COUPE A-A



dcw.

Name : LAMP GRAS

Materials : PAINTED STEEL / CHROMED STEEL

Part : BULBHOLDER SPACER

Date : 17/01/2013

Rev : 1

Details :