

dcw.

Name : LAMP GRAS US N302/304/312

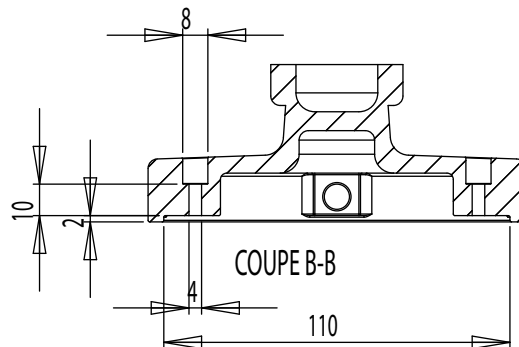
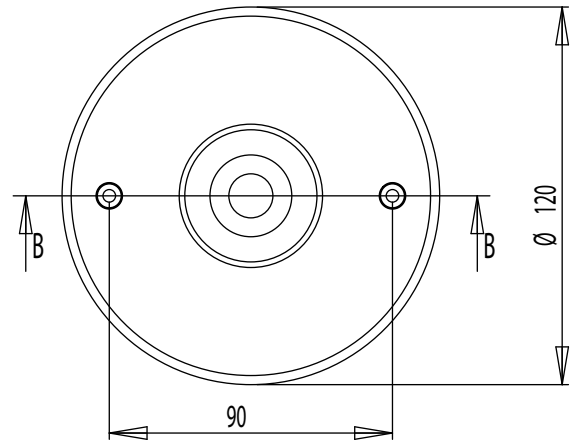
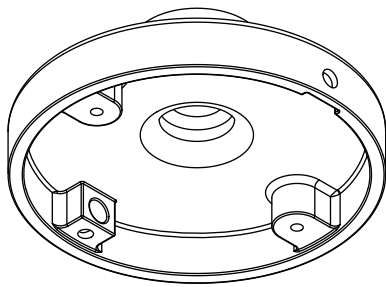
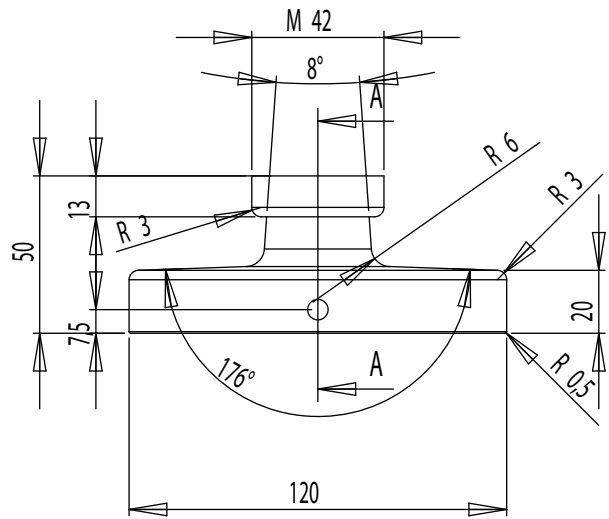
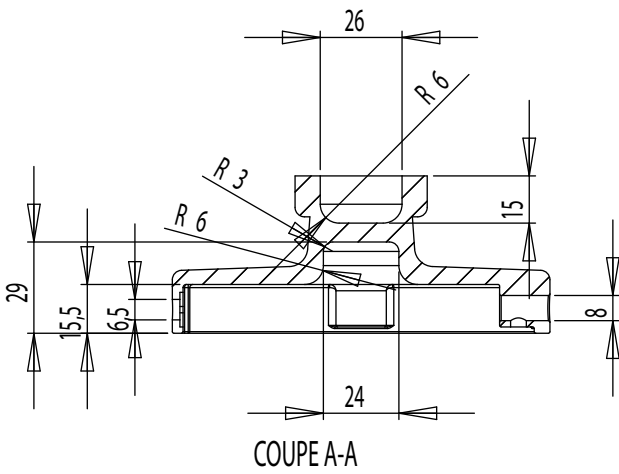
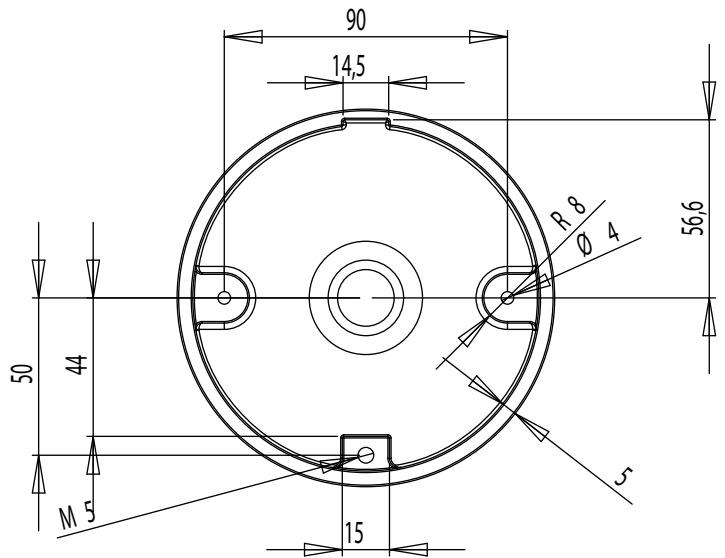
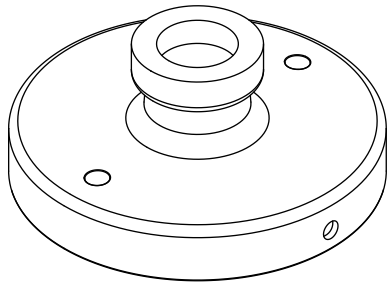
Materials : PAINTED STEEL

Part : BOLT

Date :

Rev : 1

Details :



dcw.

Name : LAMP GRAS US N°302/304

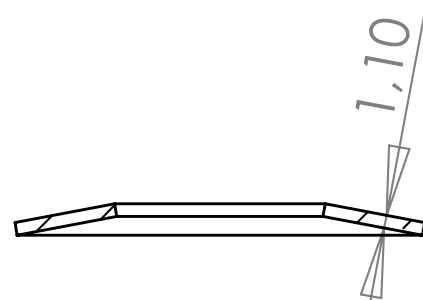
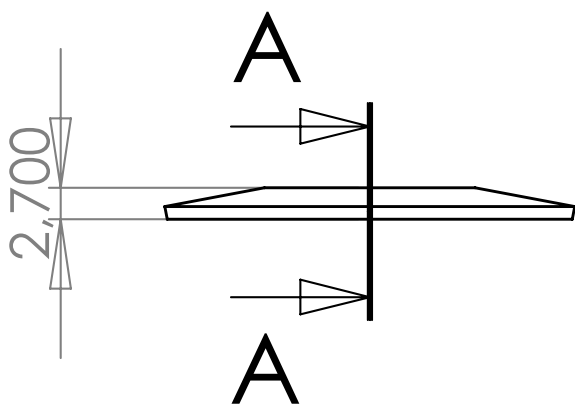
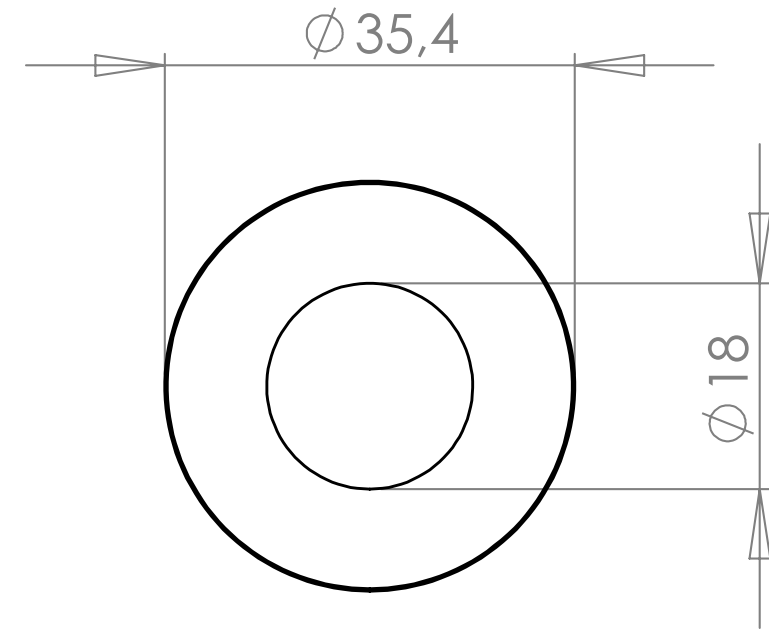
Materials : PAINTED STEEL

Part : WALL PIECE

Date :

Rev : 1

Details :



COUPE A-A

dcw.

Name : LAMP GRAS

Matériaux : SPRING STEEL

Part : BELLEVILLE WASHER

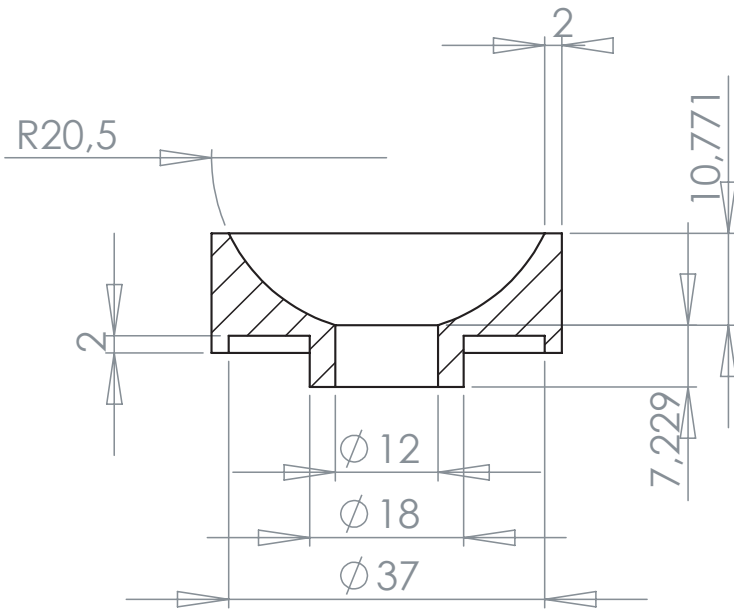
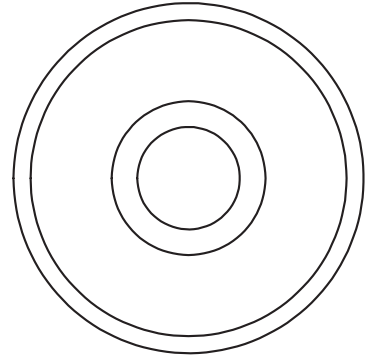
Date :

Rev : 1

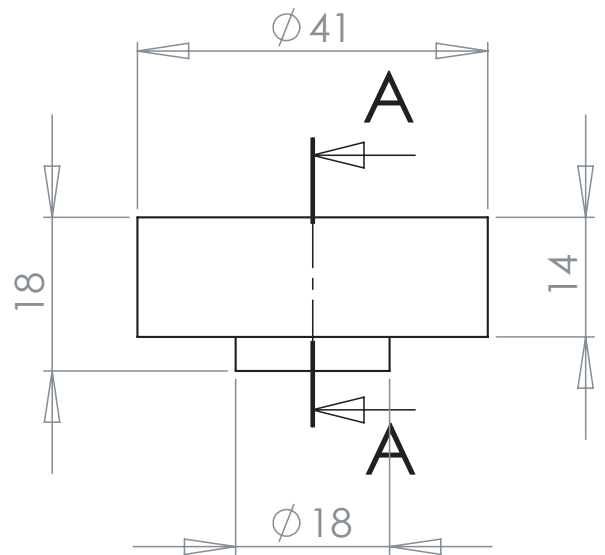
Details :



CELERON



COUPE A-A



dcw.

Name : LAMP GRAS

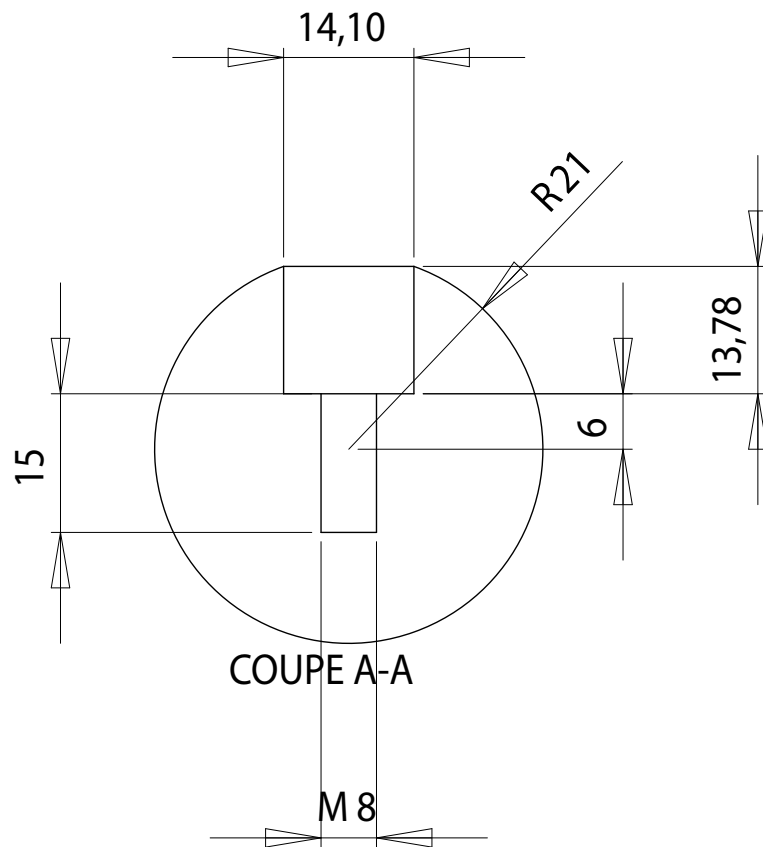
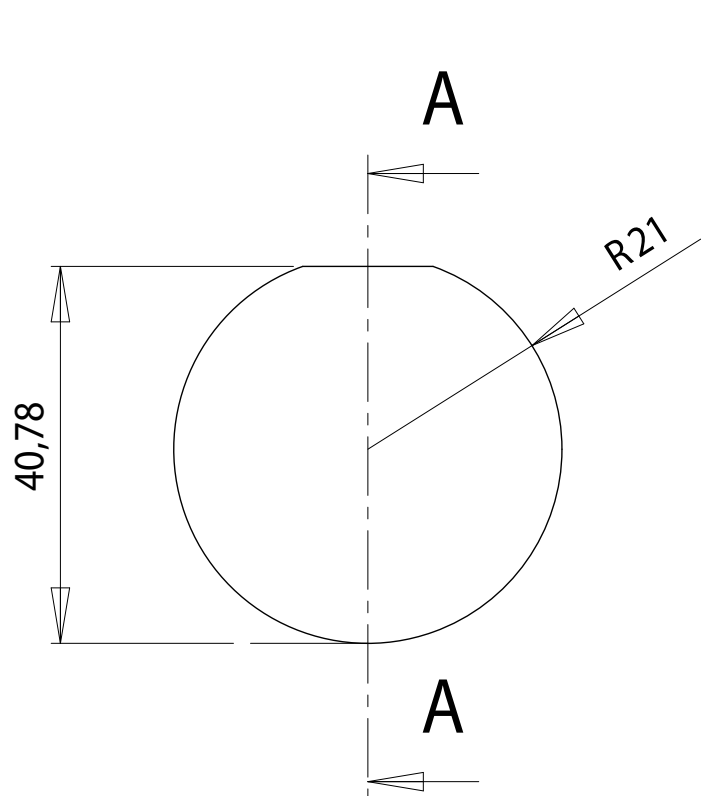
Matériaux : CELERON / THERMOPLASTIC RESIN

Part : BALL BREAKER NEW

Date :

Rev : 1

Details :



dcw.

Name : LAMP GRAS

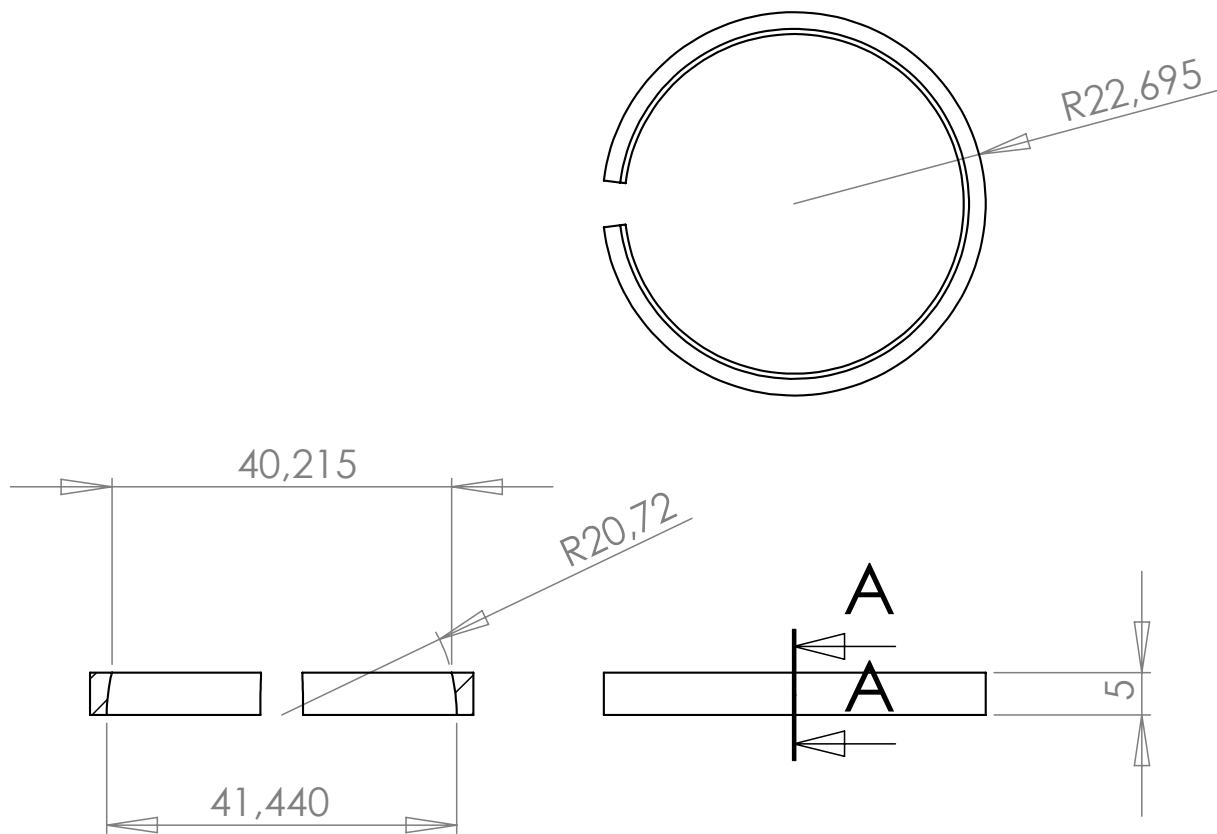
Matériaux : BLACK BAKELITE

Part : SPHERE

Date :

Rev : 1

Details :



COUPE A-A

dcw.

Name : LAMP GRAS

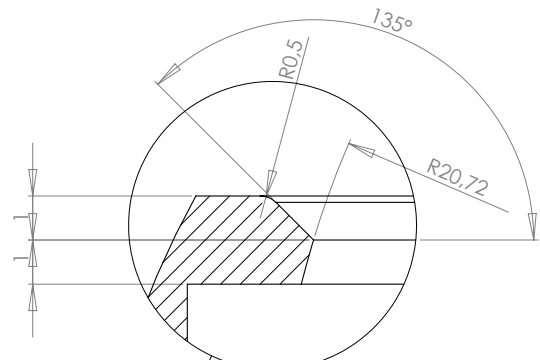
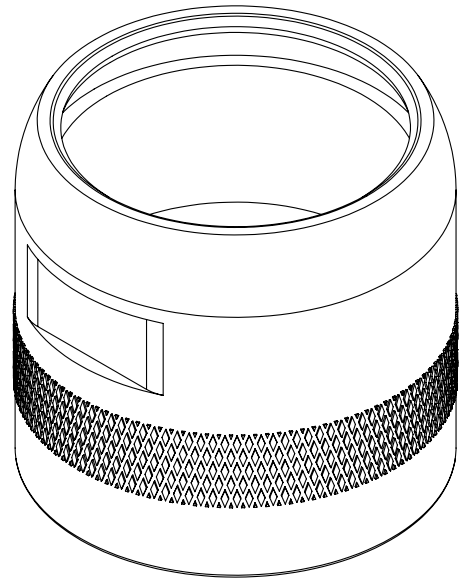
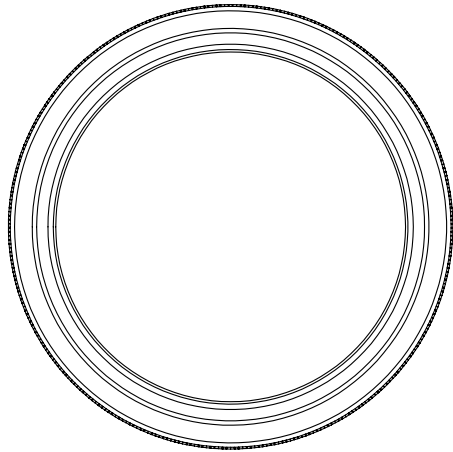
Matériaux : PA 6

Part : BREAKING RING

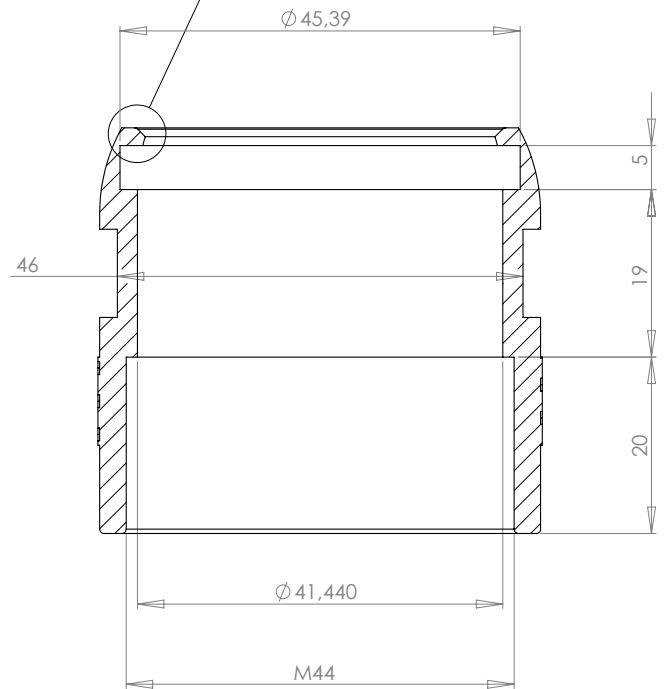
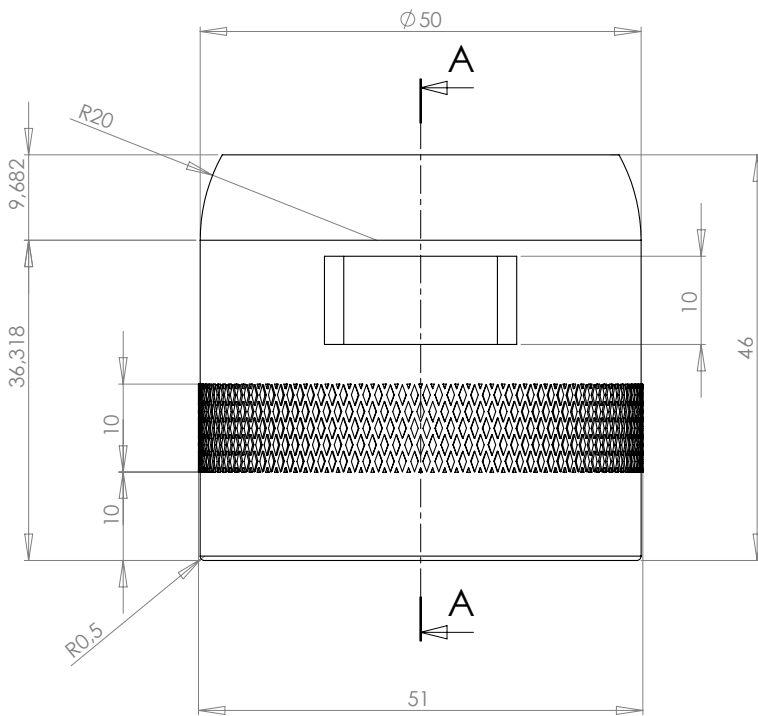
Date :

Rev : 1

Details :



DÉTAIL B



COUPE A-A

dcw.

Name : LAMP GRAS

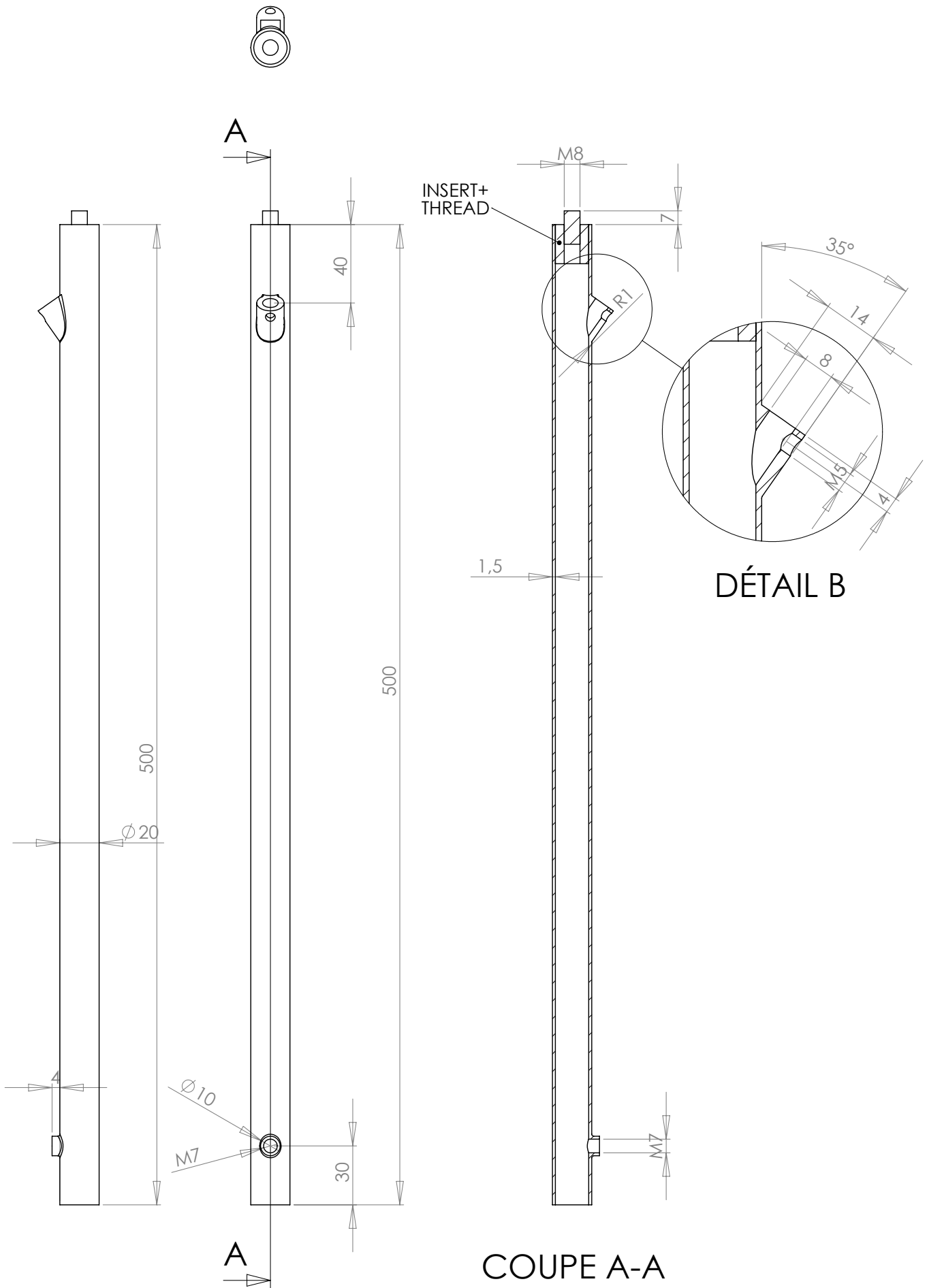
Materials : PAINTED STEEL

Part : WALL PIECE 2 NEW

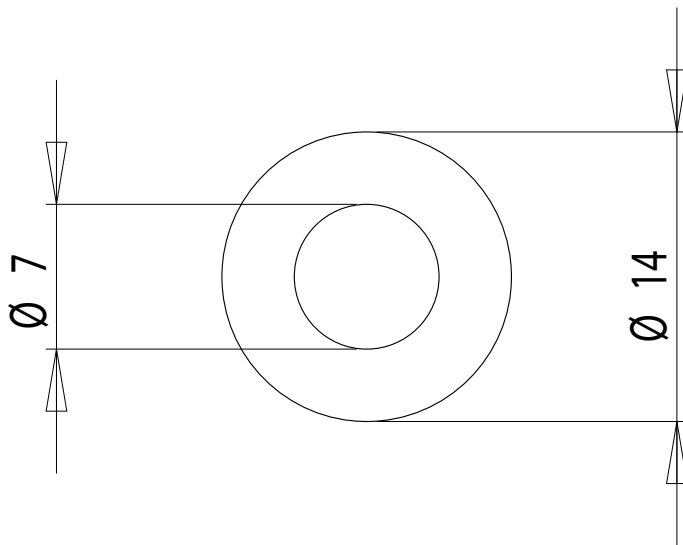
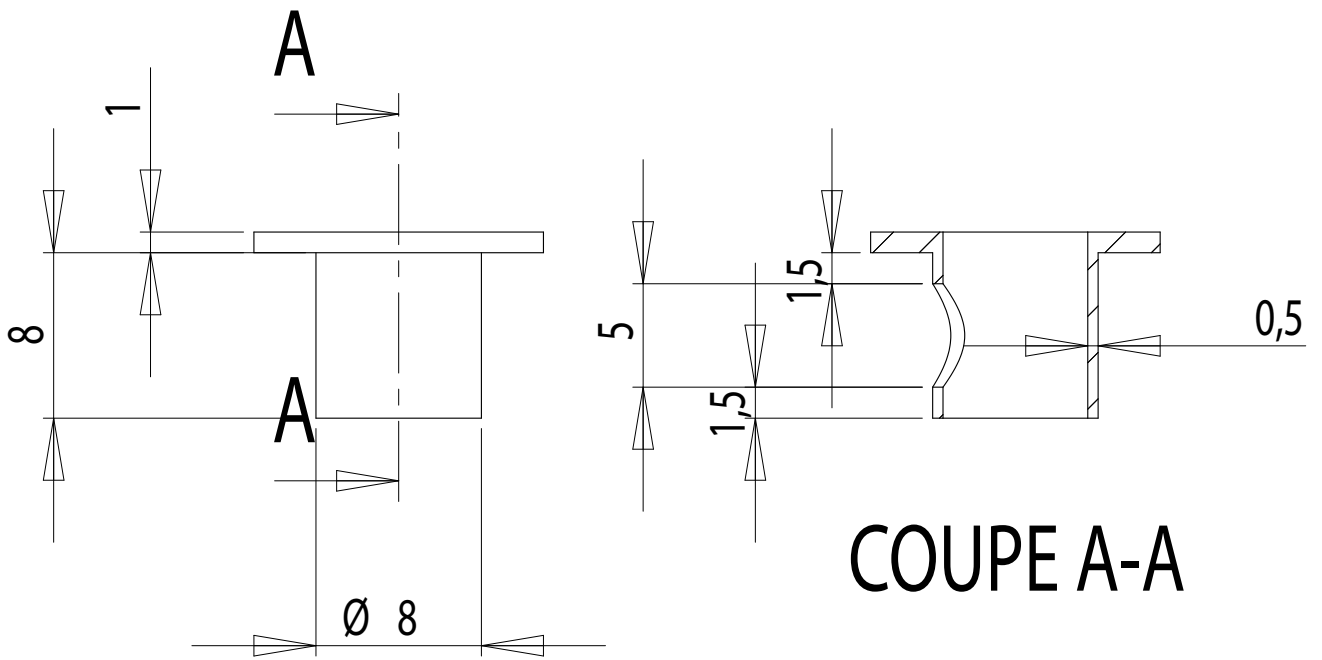
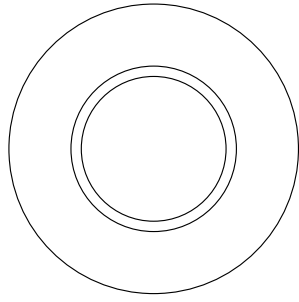
Date :

Rev : 1

Details :



COUPE A-A



dcw.

Name : LAMP GRAS

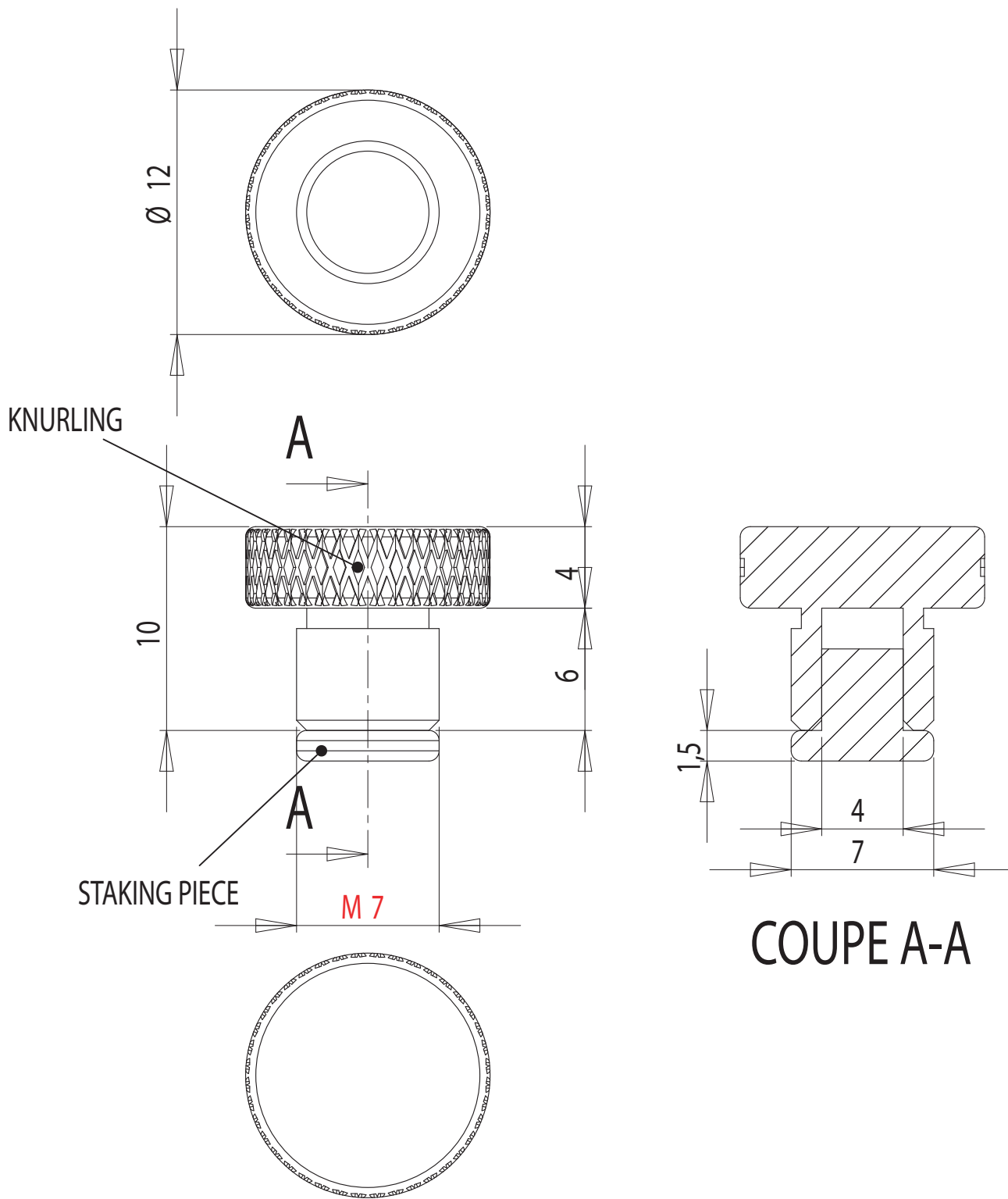
Materials : BLACK PLASTIC

Part : CORD GRIPP

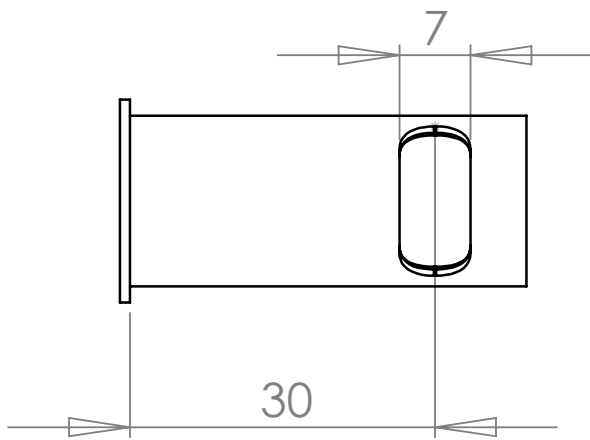
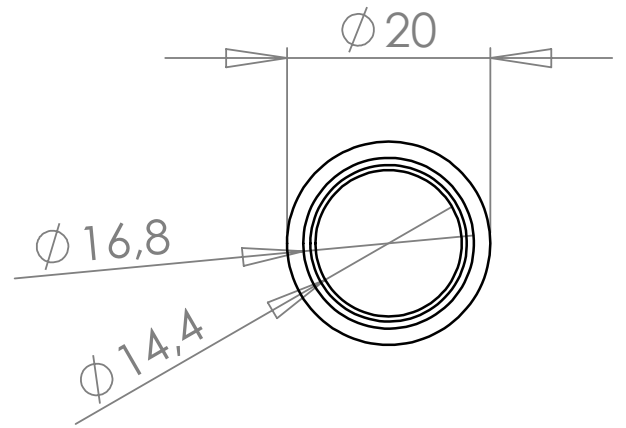
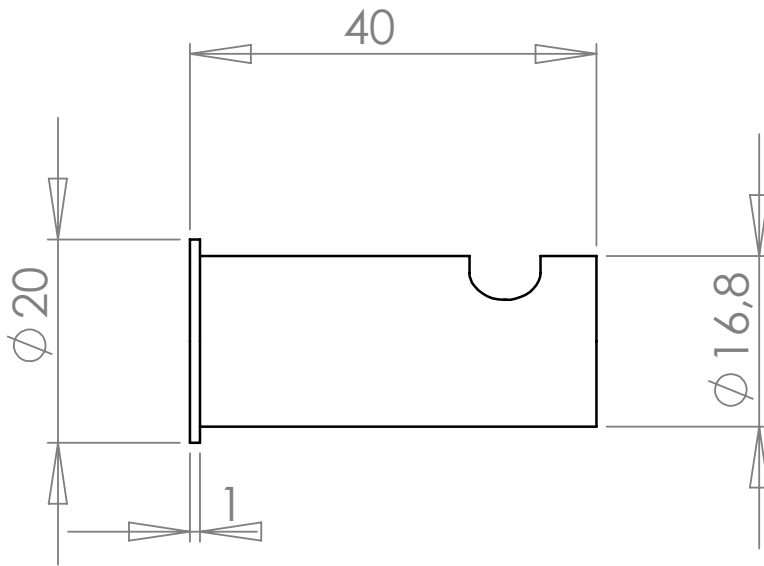
Date :

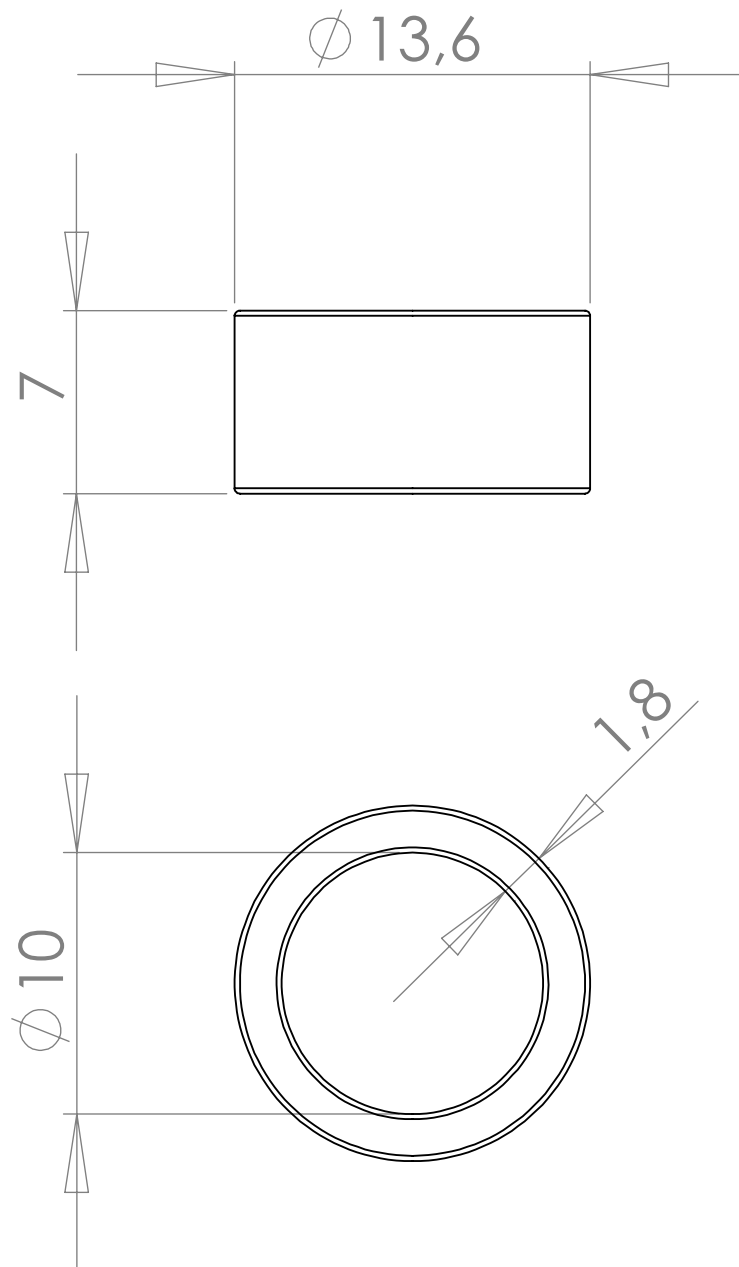
Rev : 1

Details :



COUPE A-A





dcw.

Name : LAMP GRAS

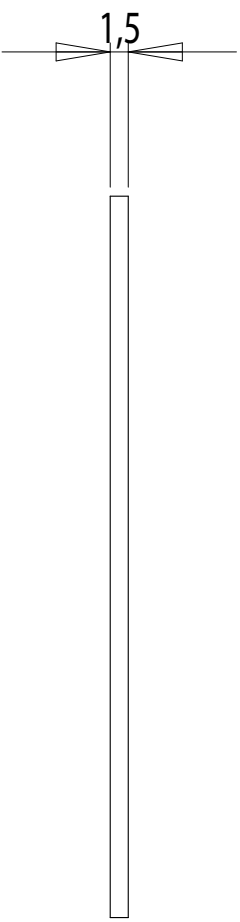
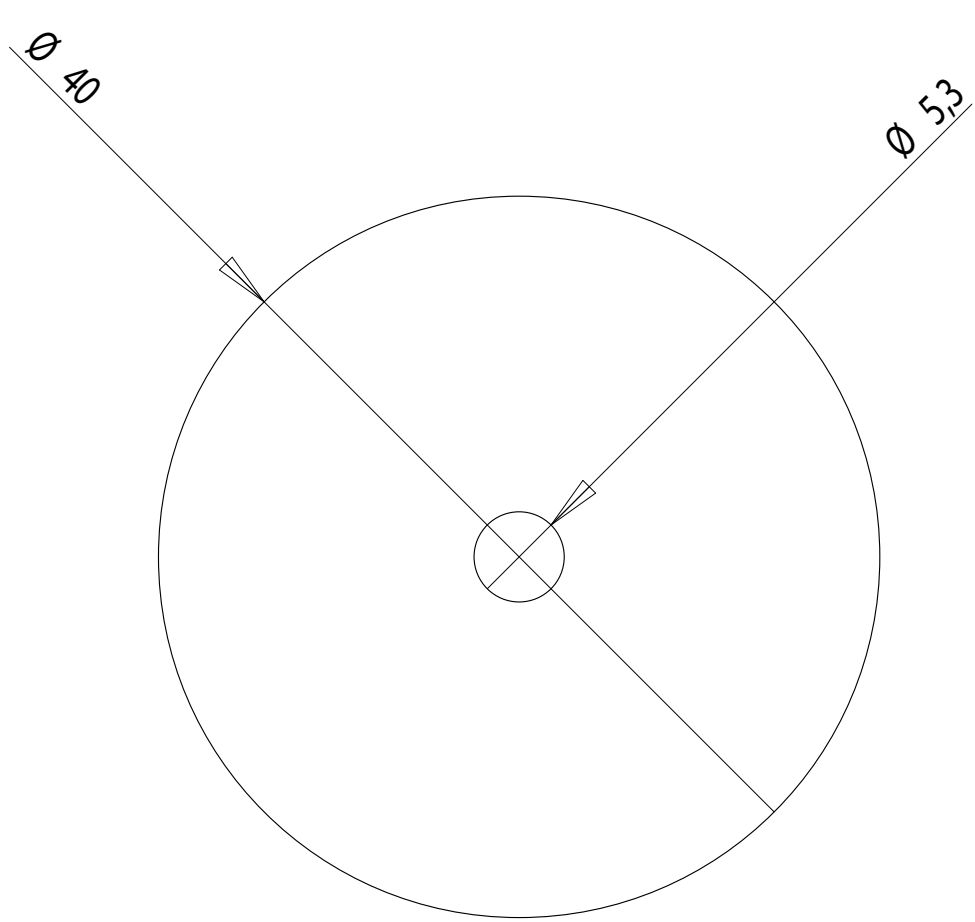
Matériaux : RUBBER

Part : RUBBER

Date :

Rev : 3

Details :



PLIERS SUPPLIED BY DCW

dcw.

Name : LAMP GRAS

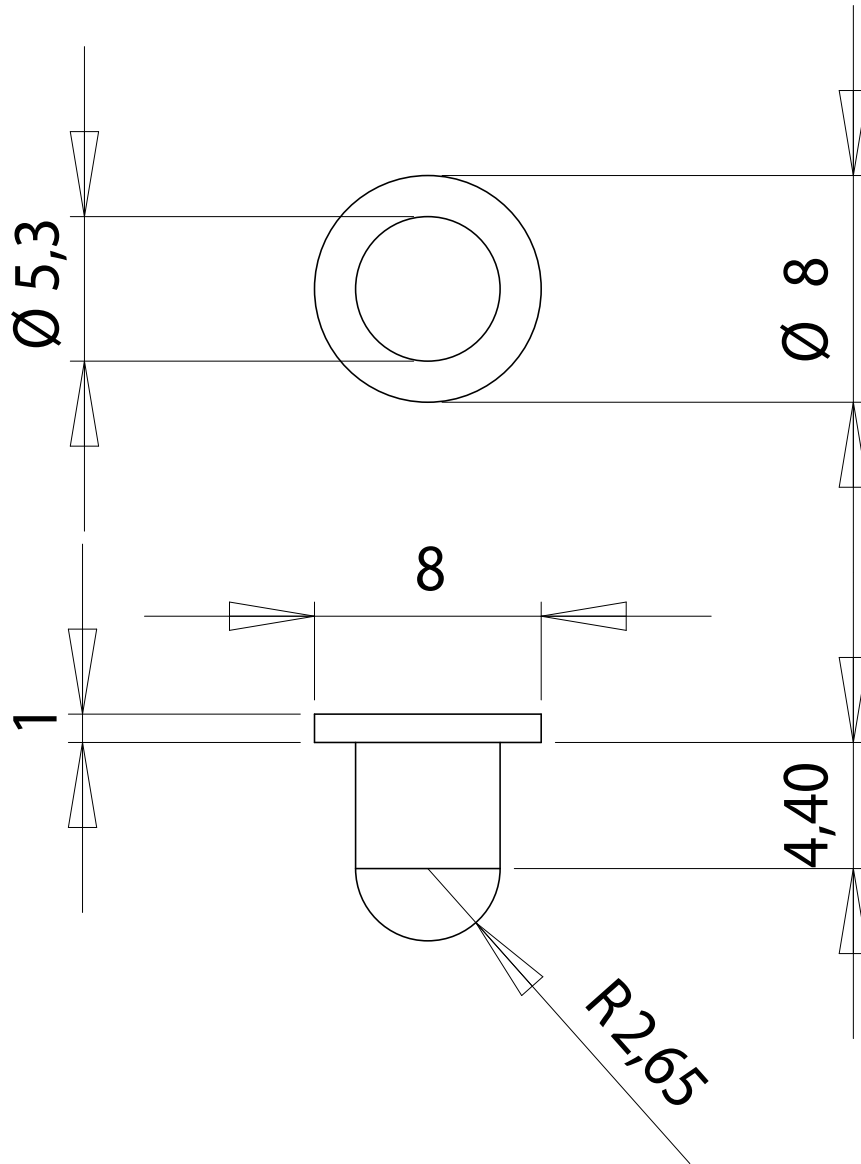
Matériaux : PLASTIC

Part : PLASTIC WASHER – Ø40

Date :

Rev : 1

Details :



dcw.

Name : LAMP GRAS

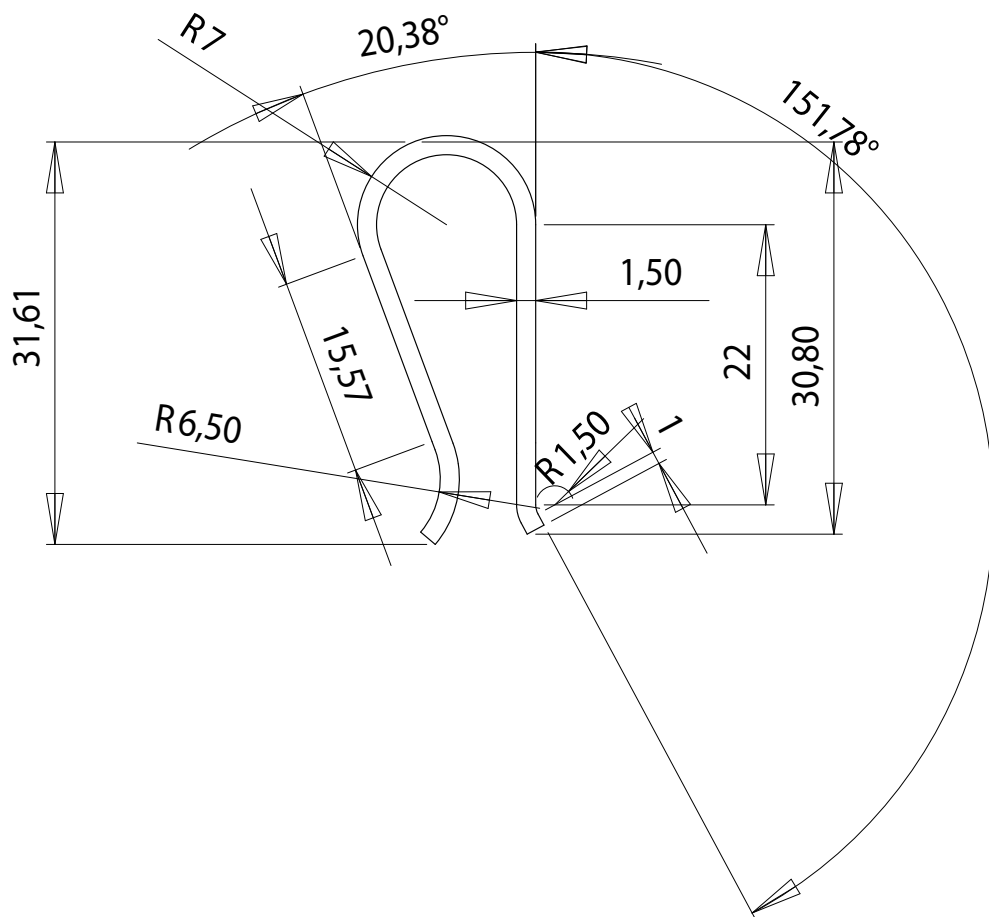
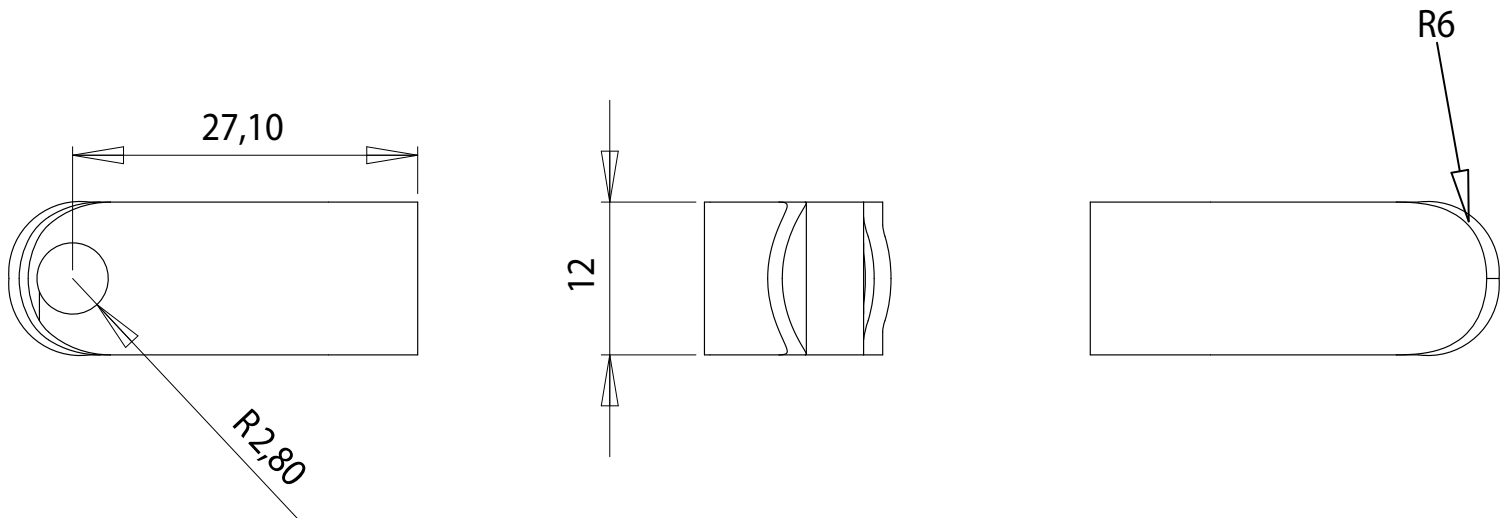
Materials : CHROMED STEEL

Part : AXIS

Date :

Rev : 1

Details :



PLIERS SUPPLIED BY DCW

dcw.

Name : LAMP GRAS

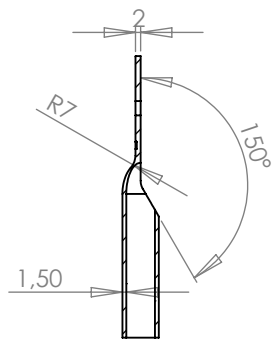
Materials : SPRING CHROMED STEEL

Part : PLIERS

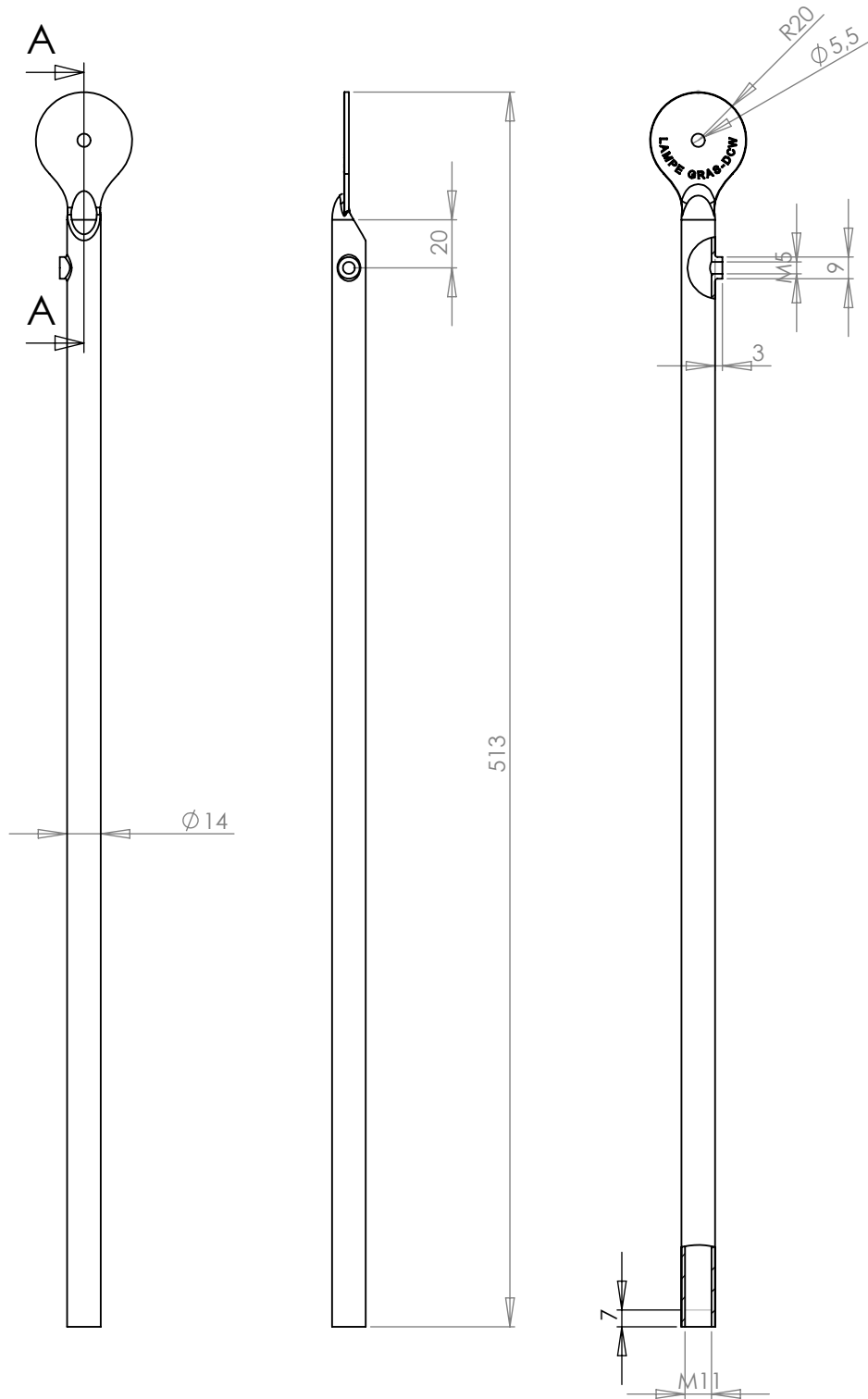
Date :

Rev : 1

Details :



COUPE A-A



dcw.

Name : LAMP GRAS

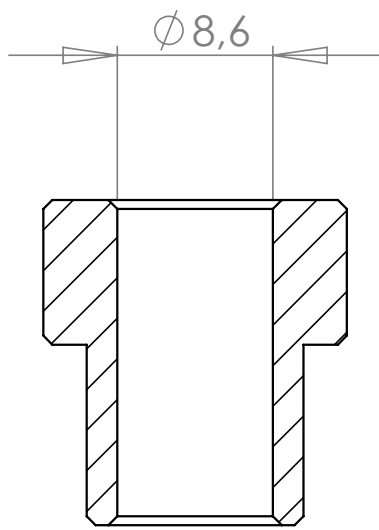
Materials : PAINTED STEEL / CHROMED STEEL

Part : TUBE 1 – N°302

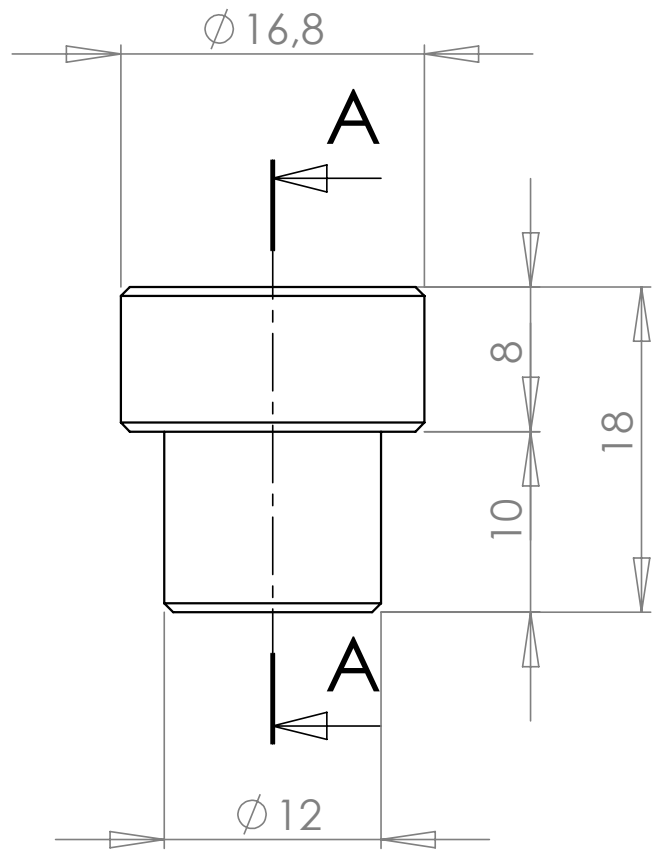
Date :

Rev : 1

Details :



COUPE A-A



dcw.

Name : LAMP GRAS N°302

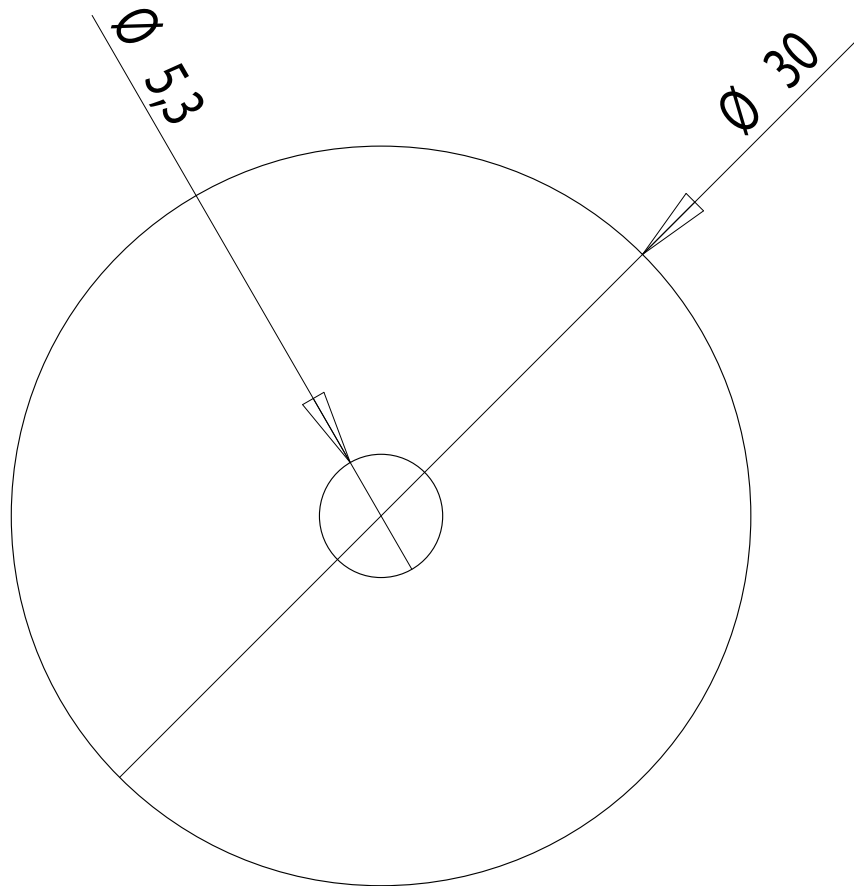
Matériaux : NYLON

Part : CENTRING PIECE

Date :

Rev : 1

Details :



PLIERS SUPPLIED BY DCW

dcw.

Name : LAMP GRAS

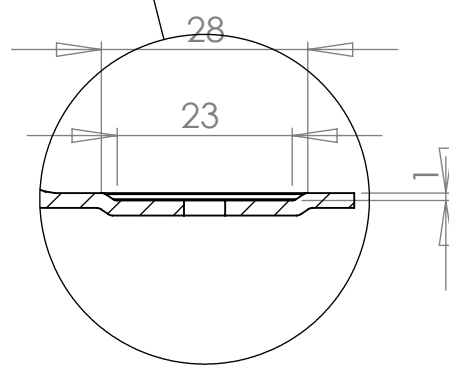
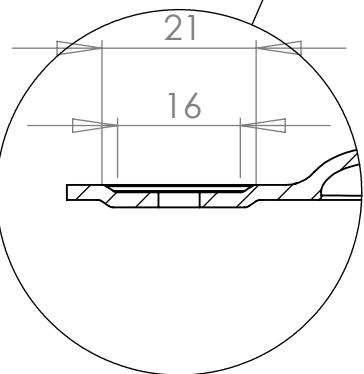
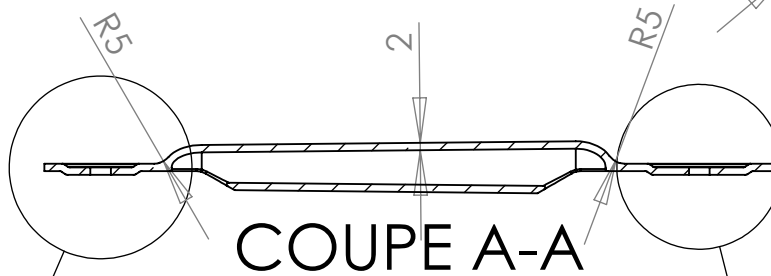
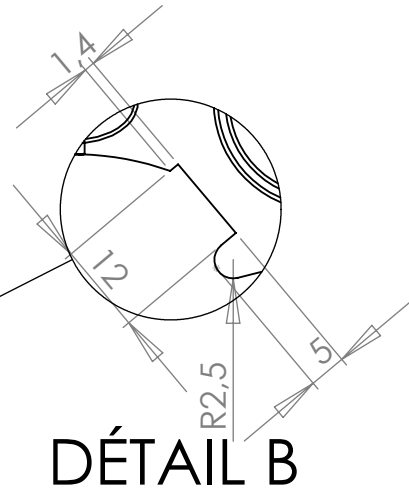
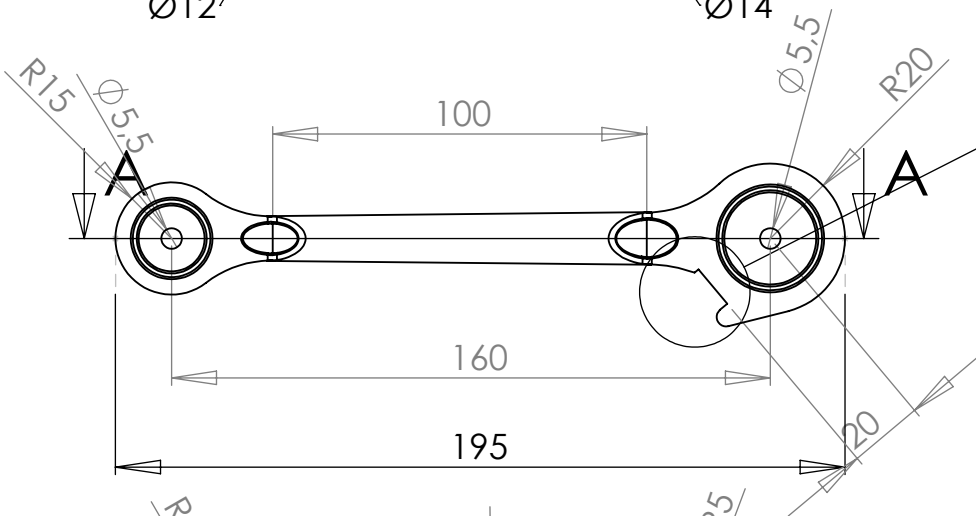
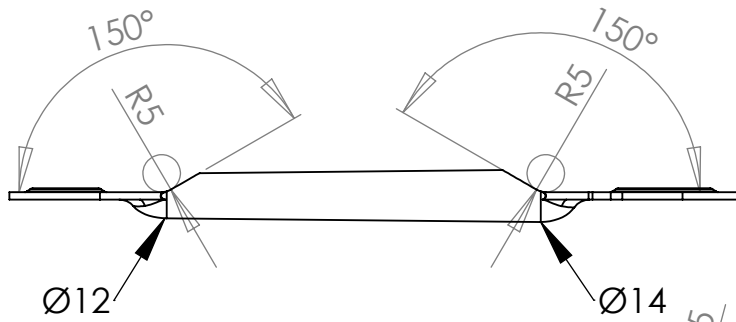
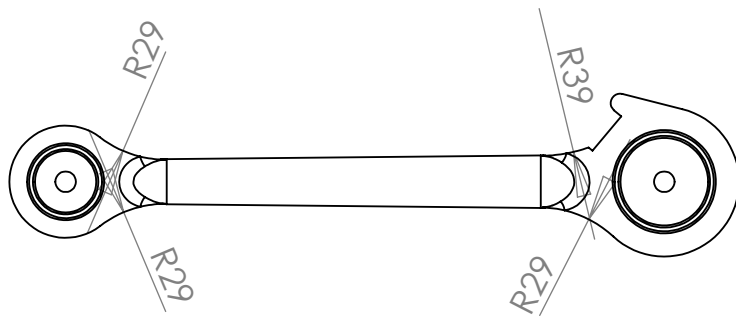
Materials : PLASTIC

Part : PLASTIC WASHER – $\varnothing 30$

Date :

Rev : 1

Details :



DÉTAIL C

DÉTAIL D

dcw.

Name : LAMP GRAS

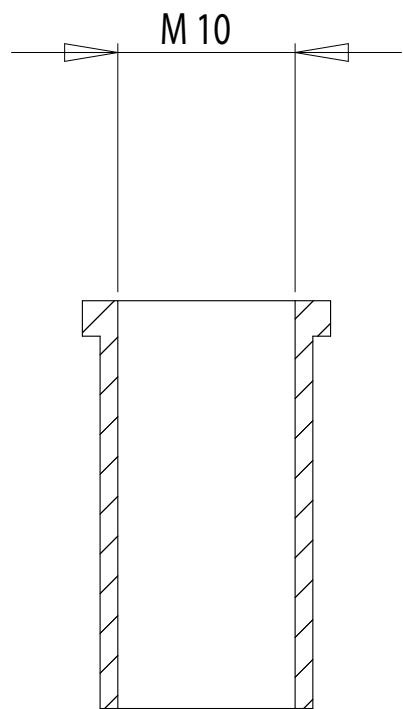
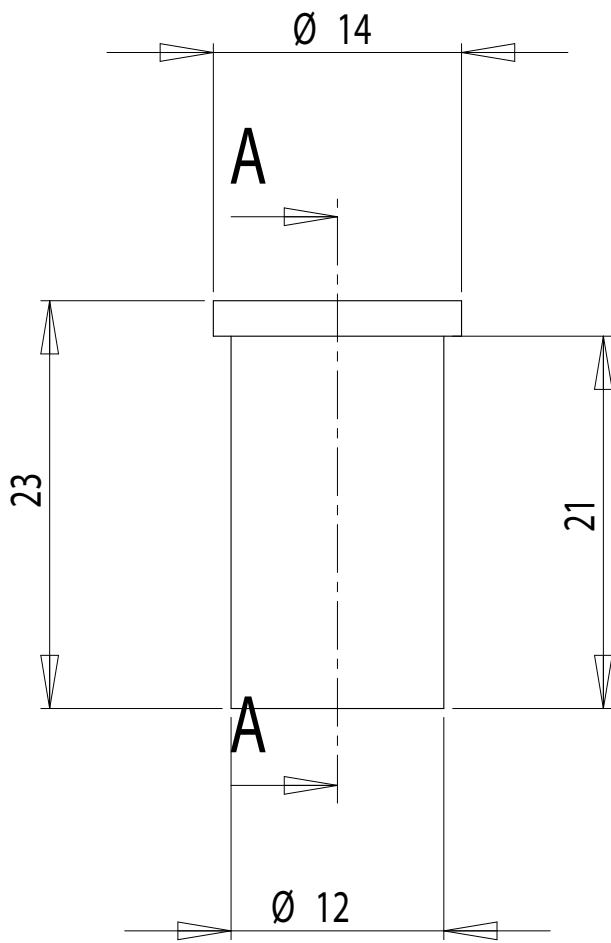
Materials : PAINTED STEEL/CHROMED STEEL

Part : TUBE 2

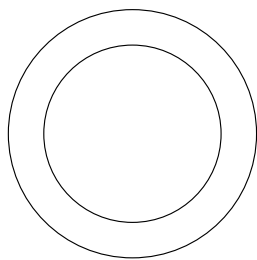
Date : 16/12/2013

Rev : 1

Details :



COUPE A-A



dcw.

Name : **LAMP GRAS**

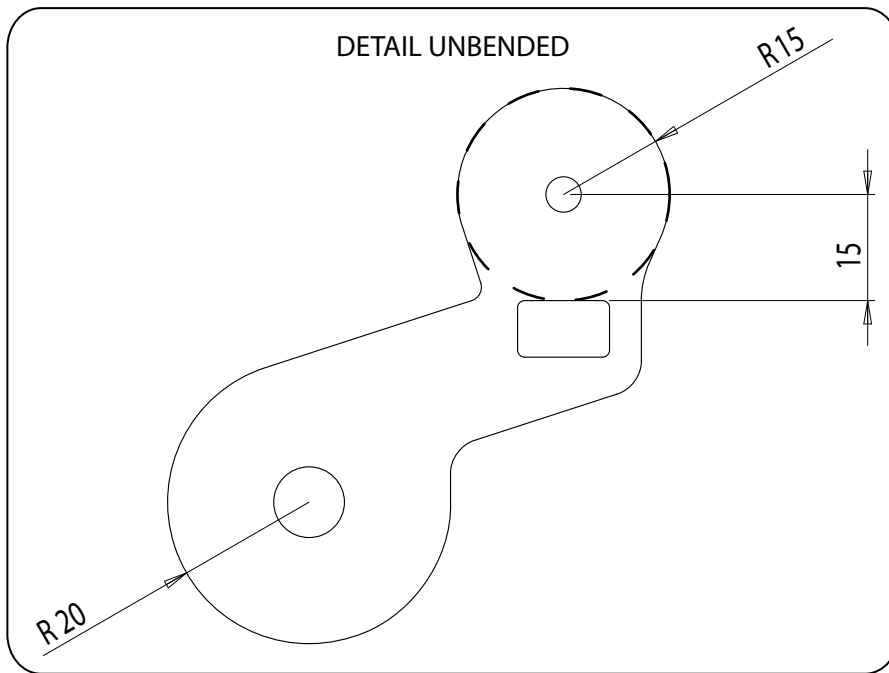
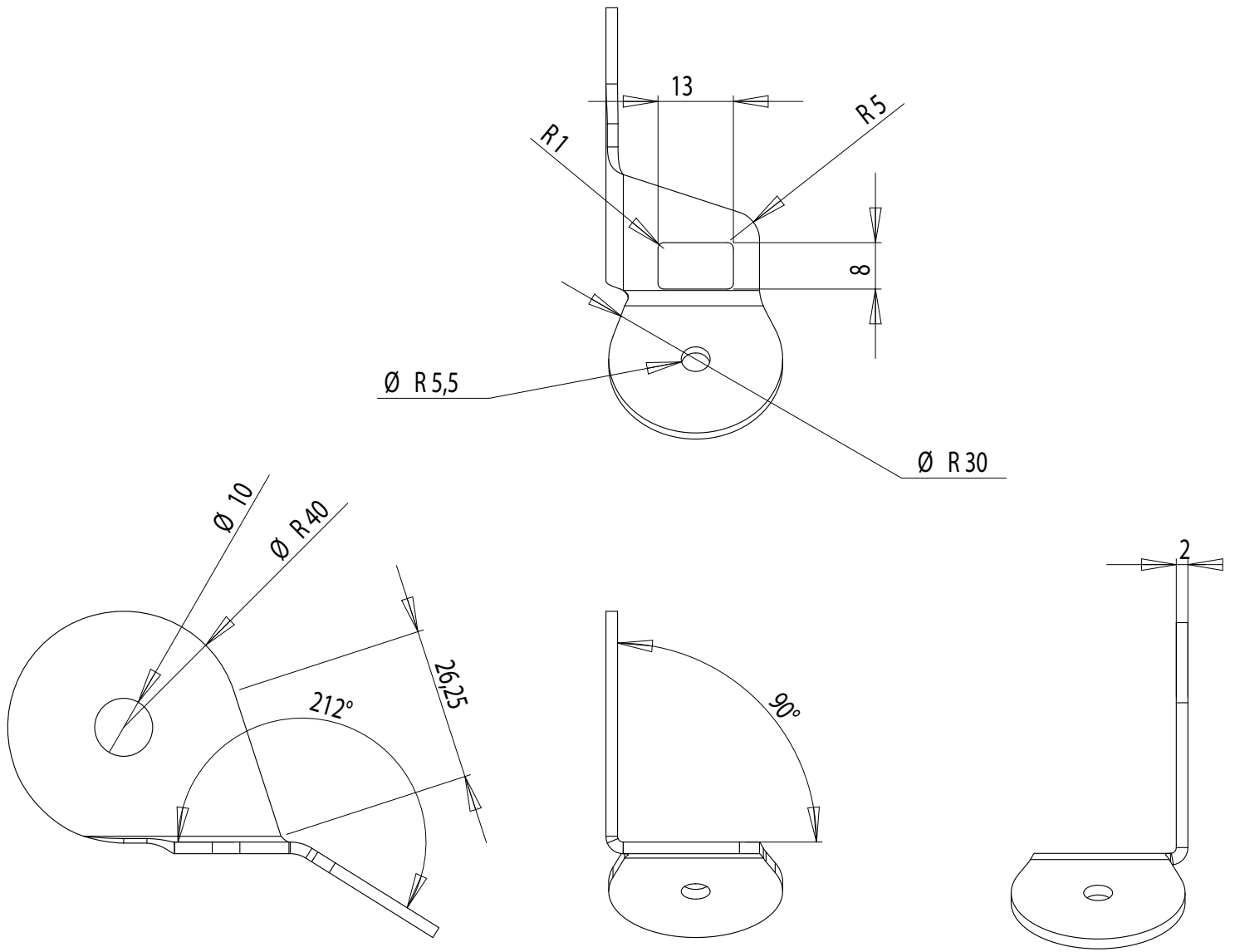
Part : **FIXATION PIECE**

Date :

Rev : 1

Materials : PAINTED STEEL / CHROMED STEEL

Details :



dcw.

Name : **LAMP GRAS**

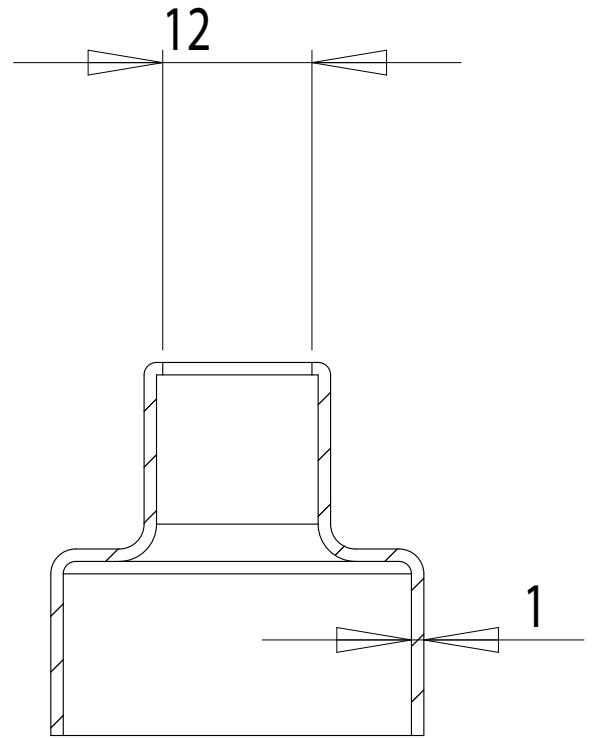
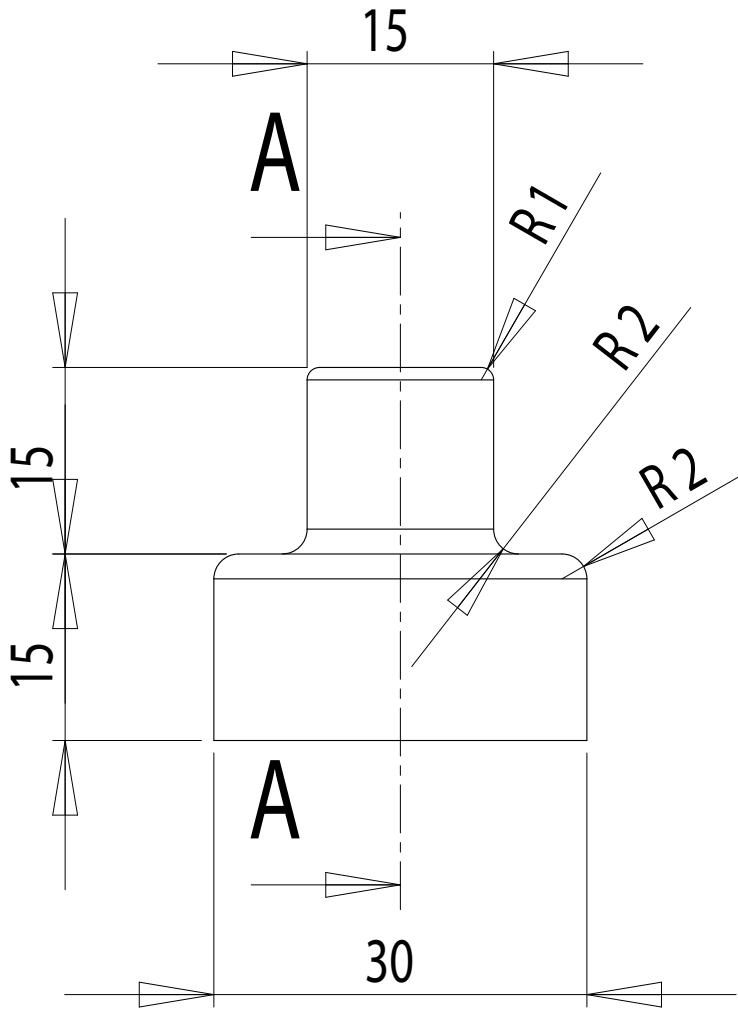
Materials : PAINTED STEEL / CHROMED STEEL

Part : **JUNCTION PIECE**

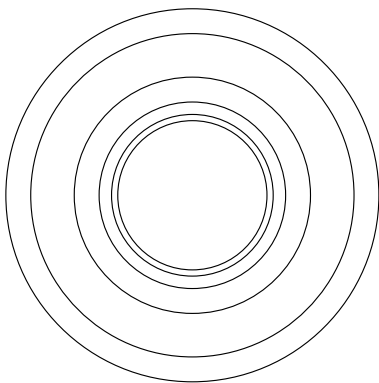
Date :

Rev : 1

Details :



COUPE A-A



dcw.

Name : **LAMP GRAS**

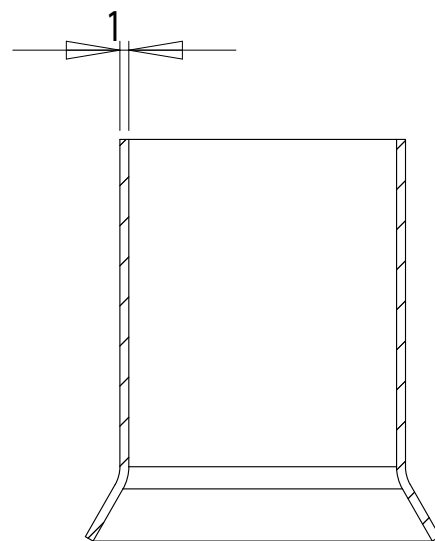
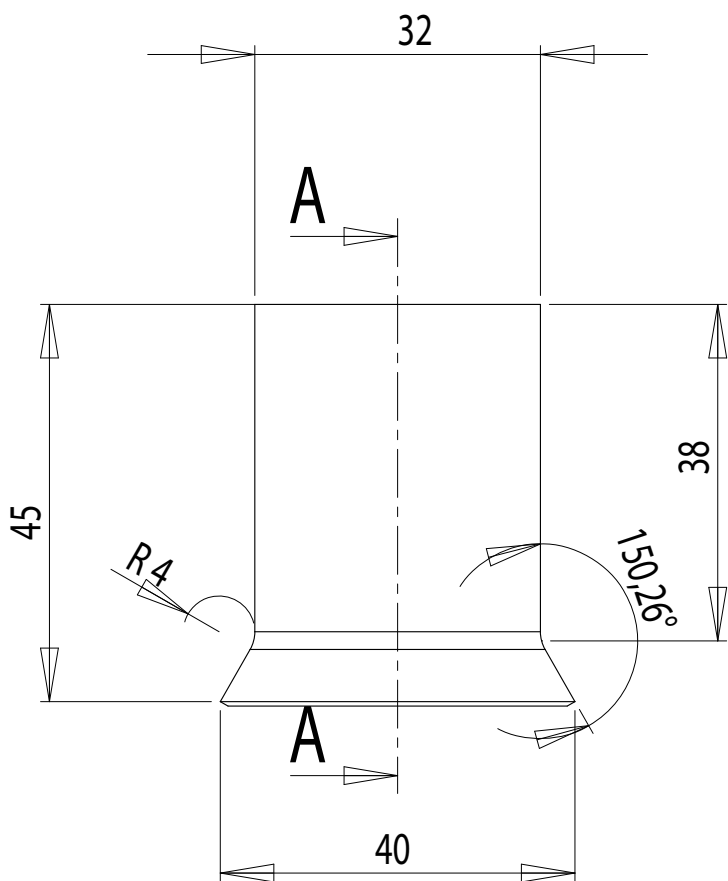
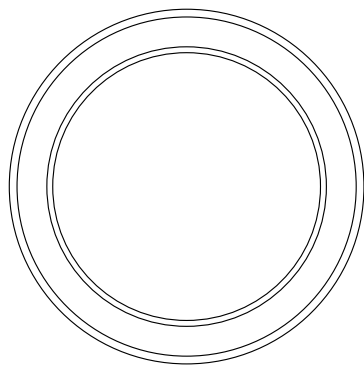
Materials : PAINTED STEEL / CHROMED STEEL

Part : **COVERING PIECE**

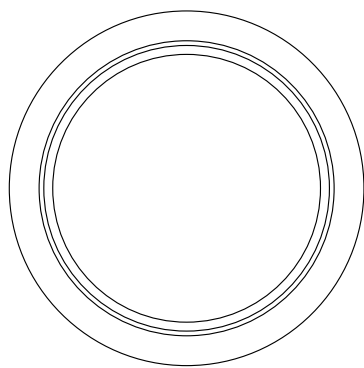
Date :

Rev : 1

Details :



COUPE A-A



dcw.

Name : **LAMP GRAS**

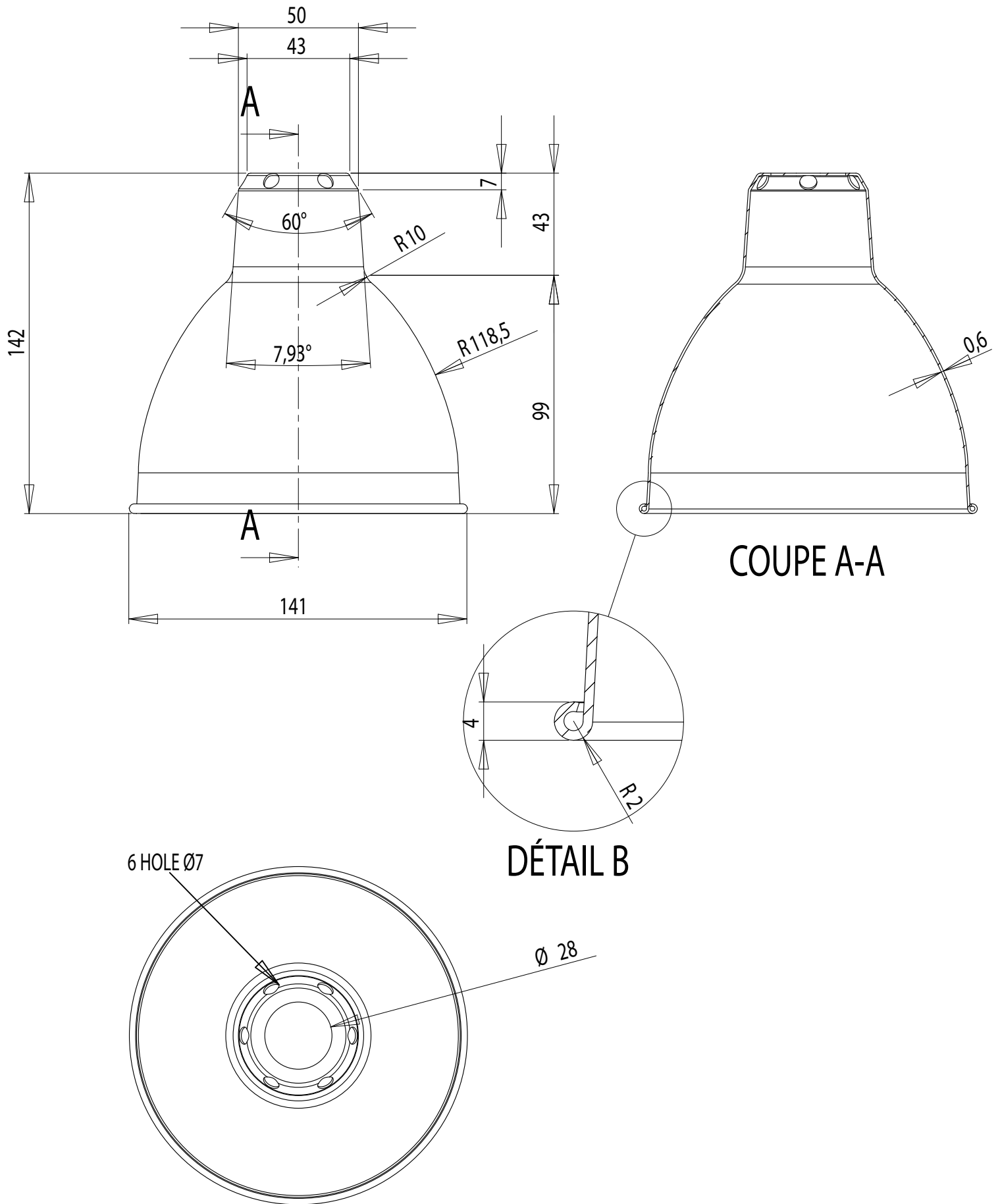
Materials : PAINTED STEEL / CHROMED STEEL

Part : **BULBHOLDER SPACER**

Date :

Rev : 1

Details :



dcw.

Name : **LAMP GRAS**

Materials : PAINTED STEEL/CHROMED STEEL

Part : **ROUND SHADE**

Date :

Rev : 1

Details :