

dcw.

Name : LAMP GRAS N°222 XL

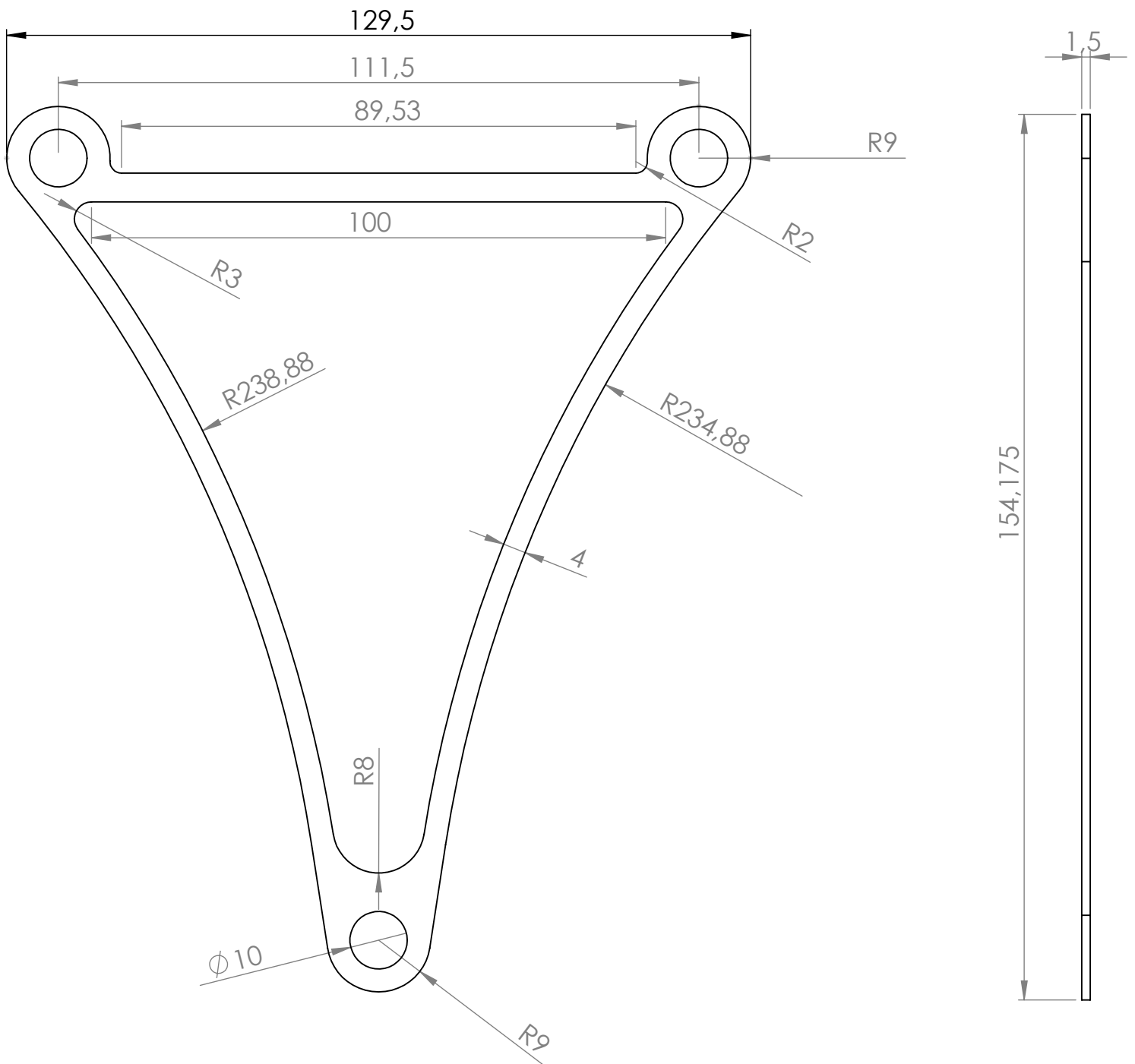
Matériaux : STAINLESS STEEL OUTDOOR PAINTING

Part : CAST

Date :

Rev : 1

Details : E27 ; Neopren black wire



dcw.

Name : LAMP GRAS N°222 XL

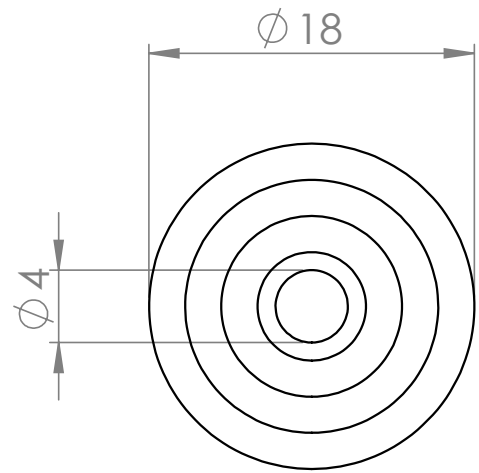
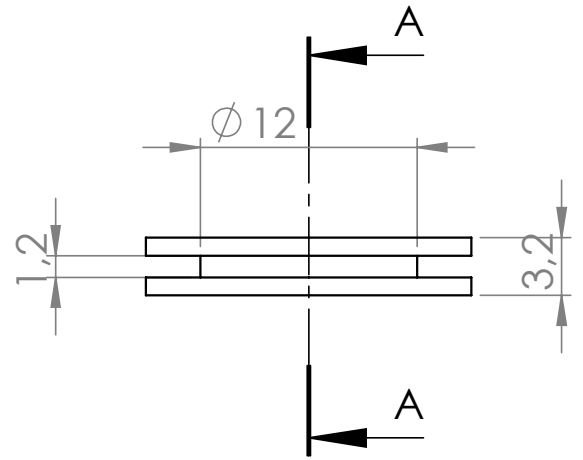
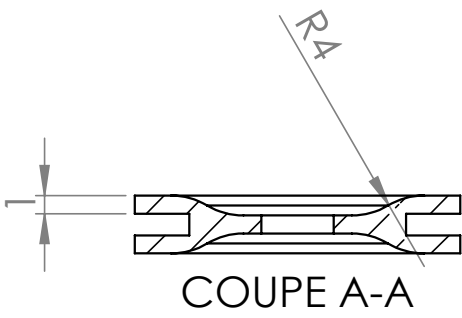
Matériaux : RUBBER

Part : CAST JOINT

Date :

Rev : 1

Details : E27 ; Neopren black wire



dcw.

Name : LAMP GRAS XL

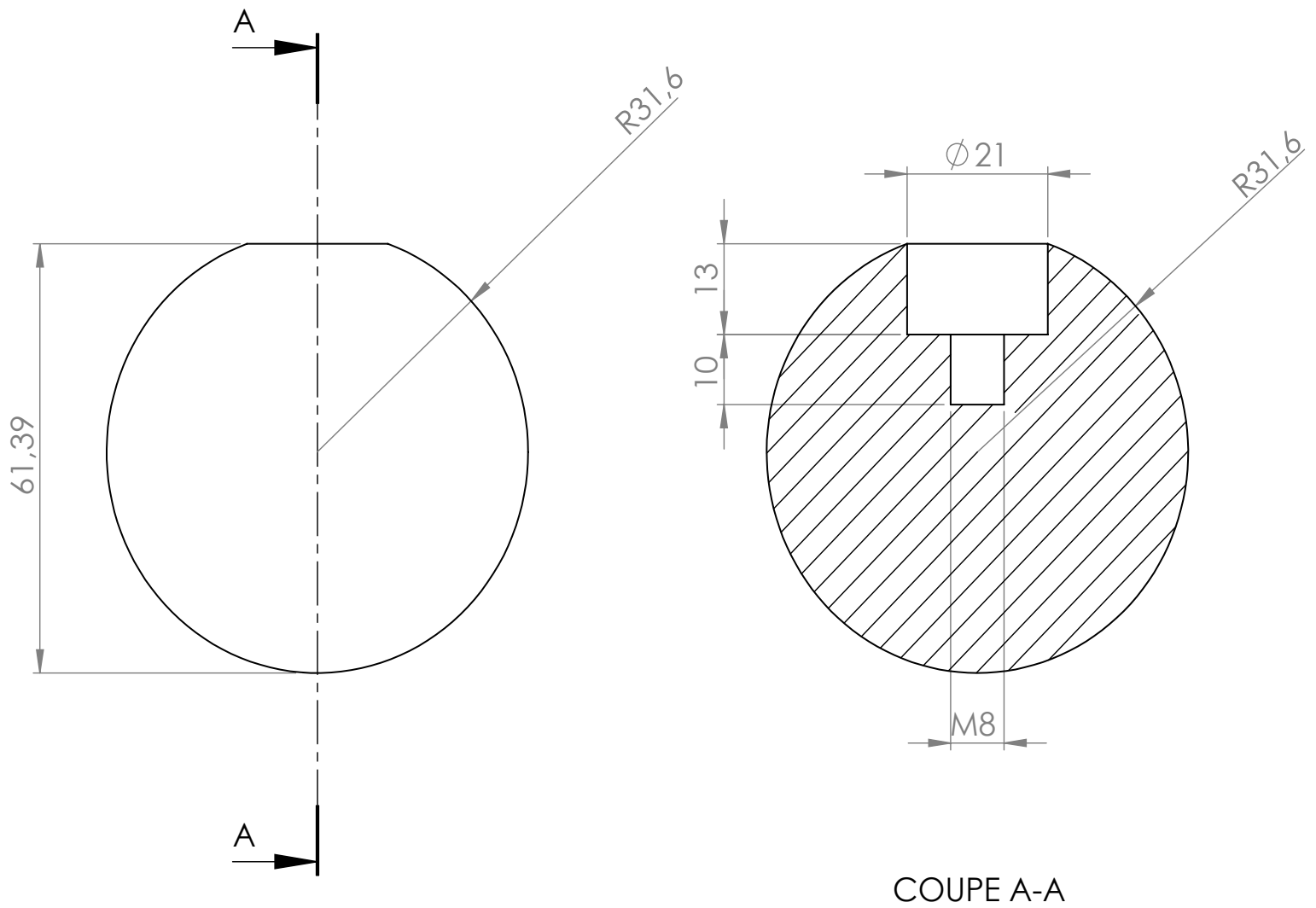
Matériaux : RUBBER

Part : COVER JOINT

Date :

Rev : 1

Details : E27 ; Neopren black wire



dcw.

Name : LAMP GRAS XL

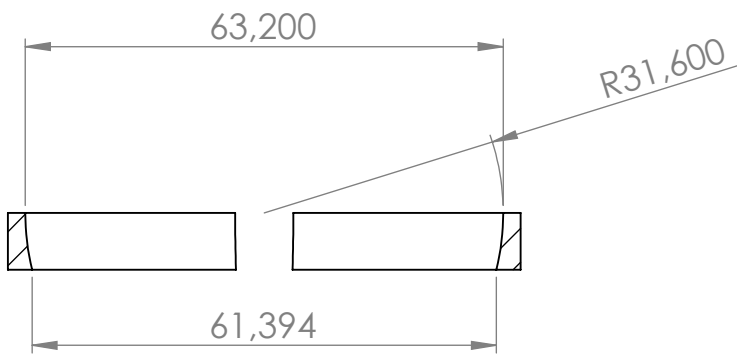
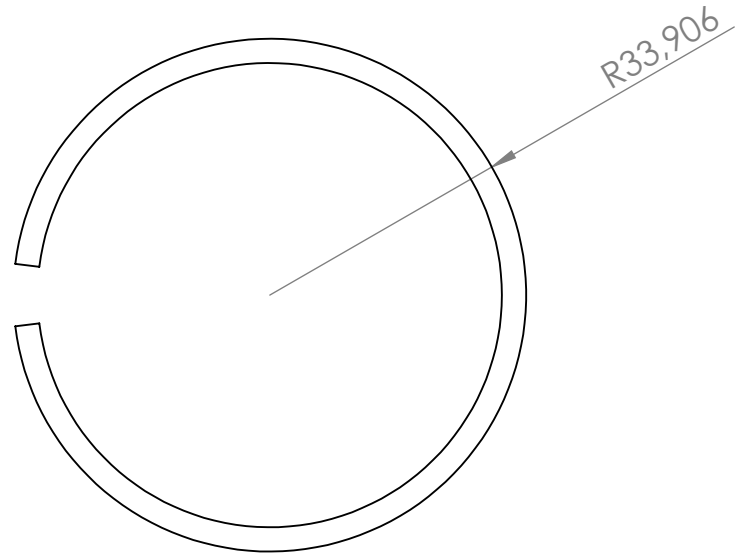
Matériaux : BAKELITE

Part : SPHERE

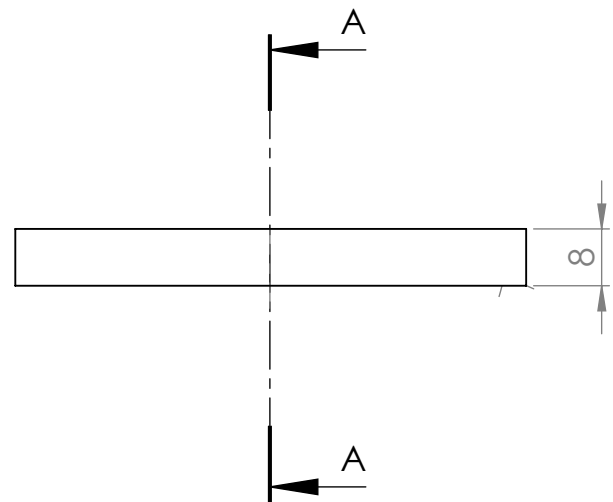
Date :

Rev : 1

Details : E27 ; Neopren black wire



COUPE A-A



dcw.

Name : LAMP GRAS XL

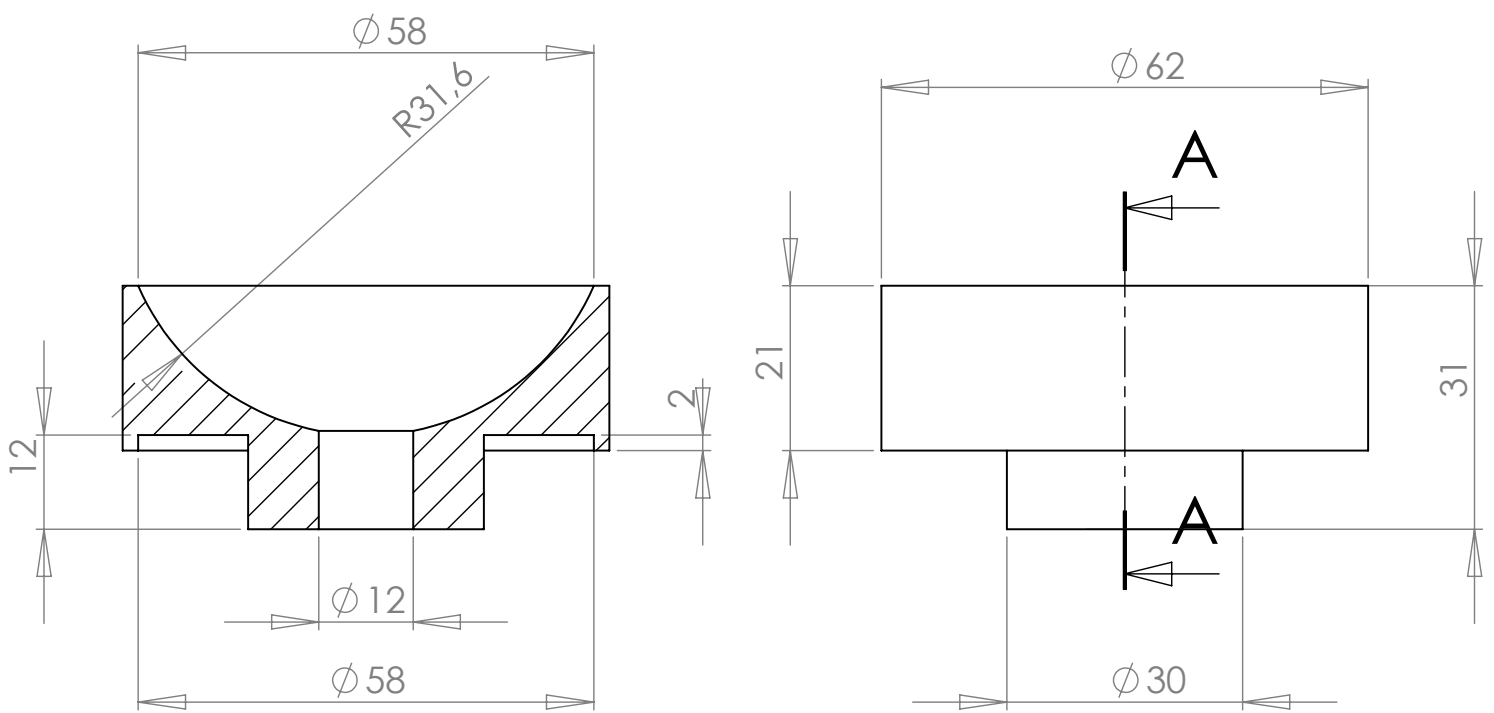
Matériaux : NYLON

Part : BREAKING RING

Date :

Rev : 1

Details : E27 ; Neopren black wire



COUPE A-A

dcw.

Name : LAMP GRAS XL

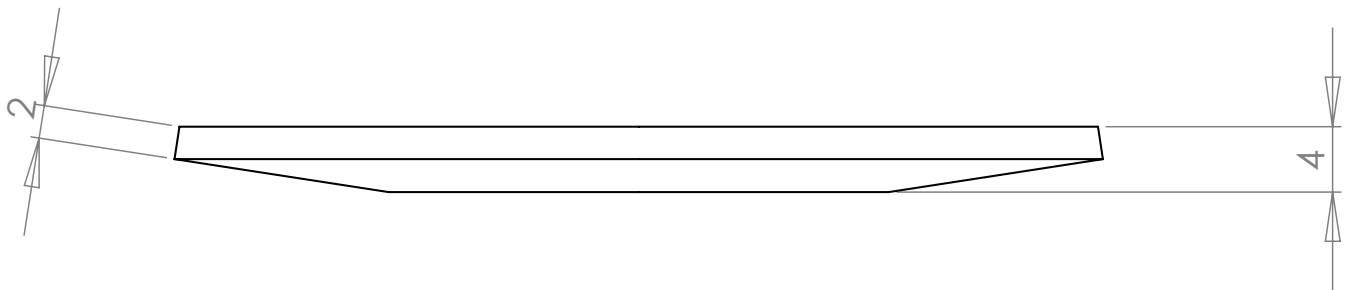
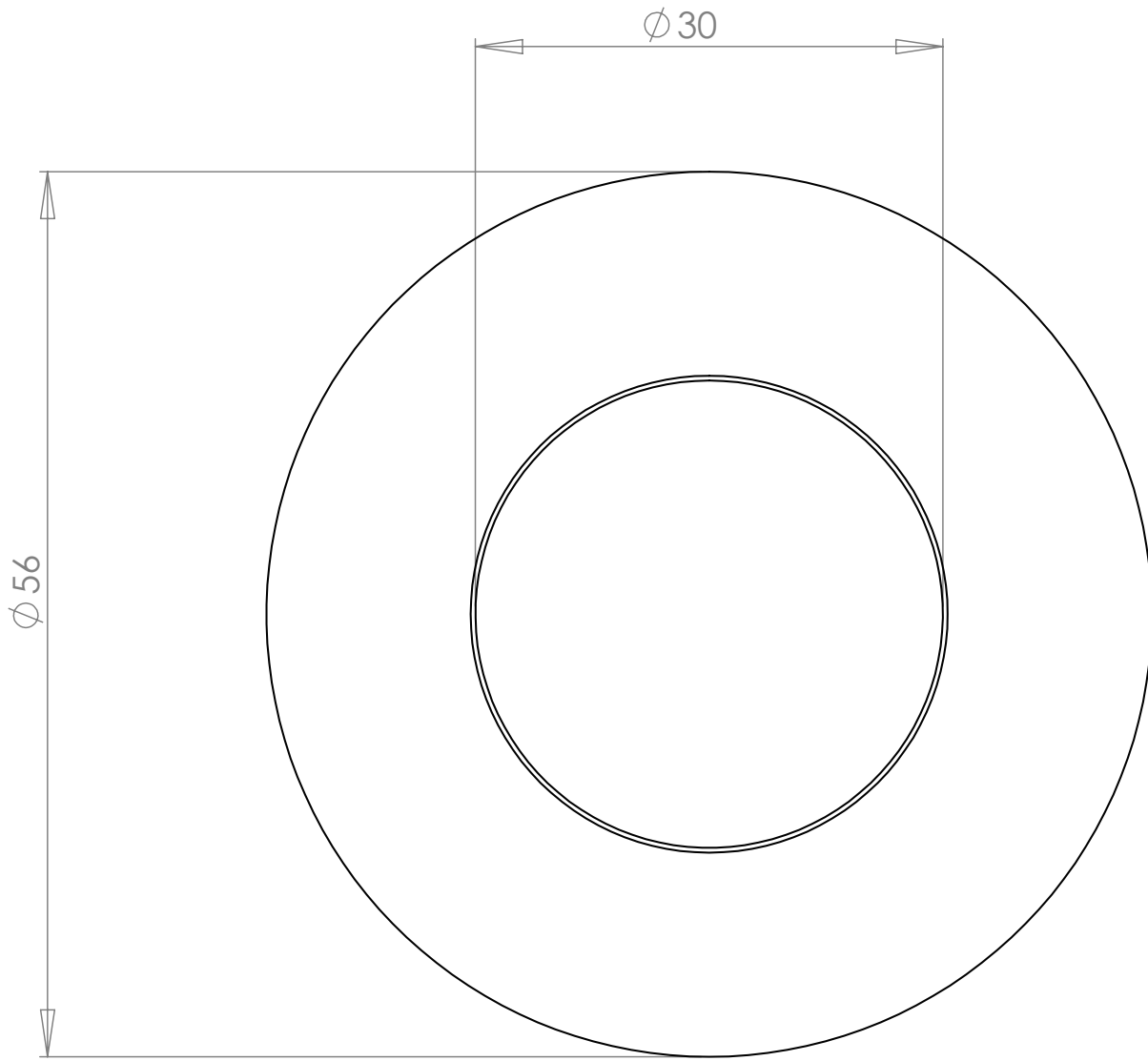
Matériaux : CELERON / THERMOPLASTIC RESIN

Part : CELERON BALL BREAKER

Date :

Rev : 1

Details : E27 ; Neopren black wire



dcw.

Name : LAMP GRAS XL

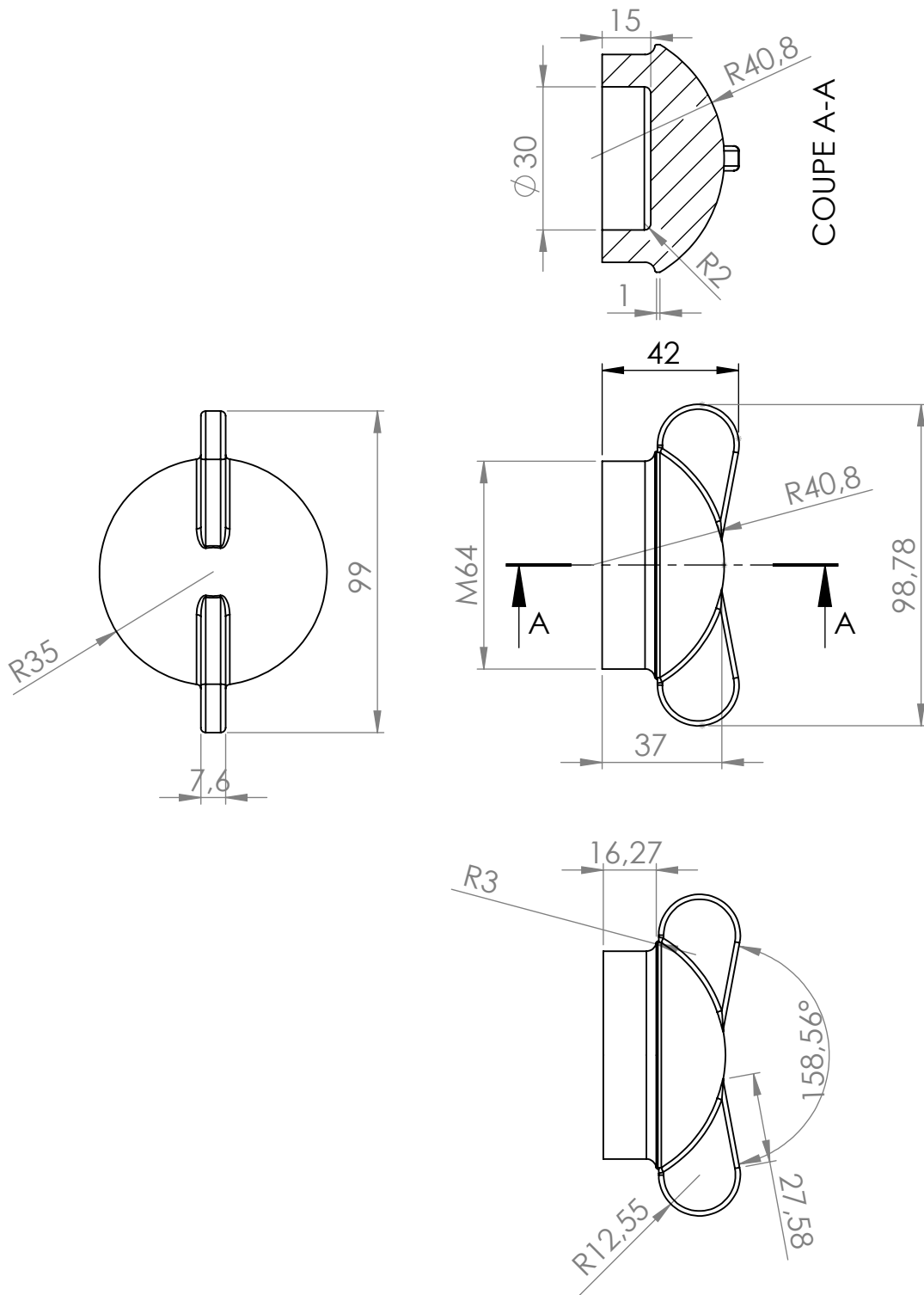
Matériaux : SPRING STEEL

Part : BELLEVILLE WASHER

Date :

Rev : 1

Details : E27 ; Neopren black wire



dcw.

Name : LAMP GRAS N°214 OUTDOOR XL

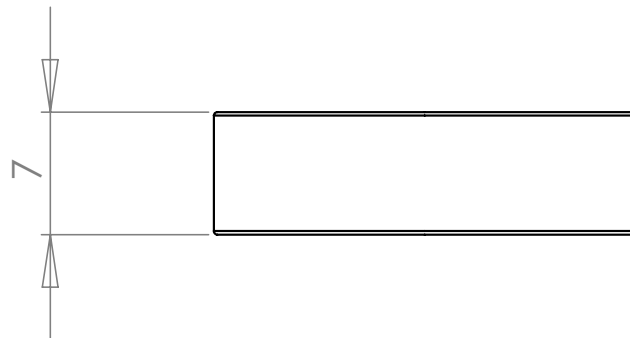
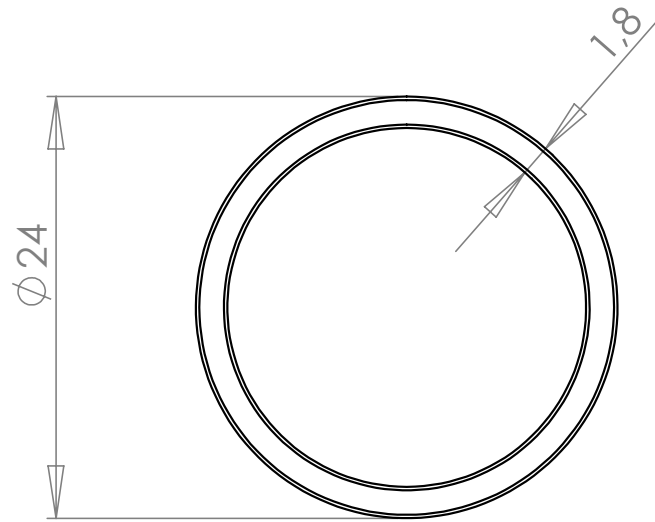
Matériaux : STAINLESS STEEL OUTDOOR PAINTING

Part : LOOKING PIECE

Date :

Rev : 1

Details : E27 ; Neopren black wire



dcw.

Name : LAMP GRAS XL

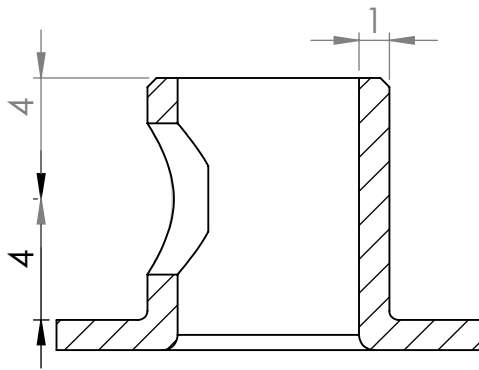
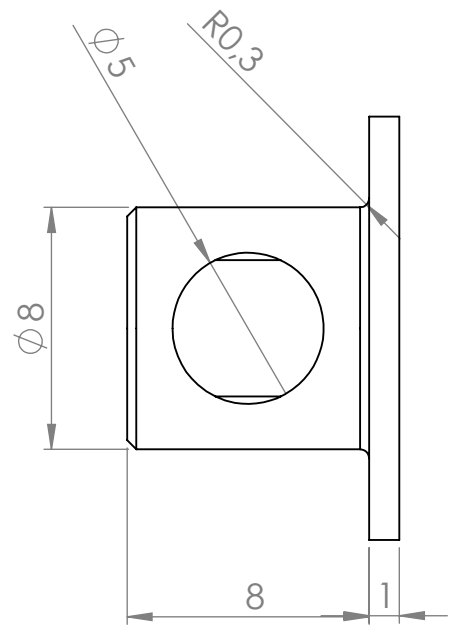
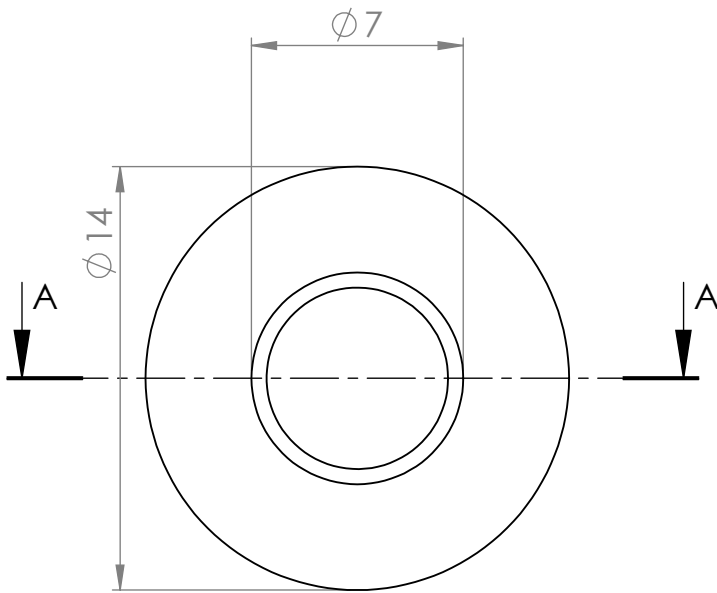
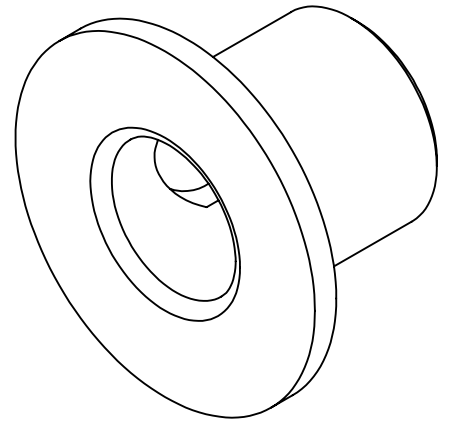
Matériaux : RUBBER

Part : RUBBER

Date :

Rev : 1

Details : E27 ; Neopren black wire



COUPE A-A

dcw.

Name : LAMP GRAS XL

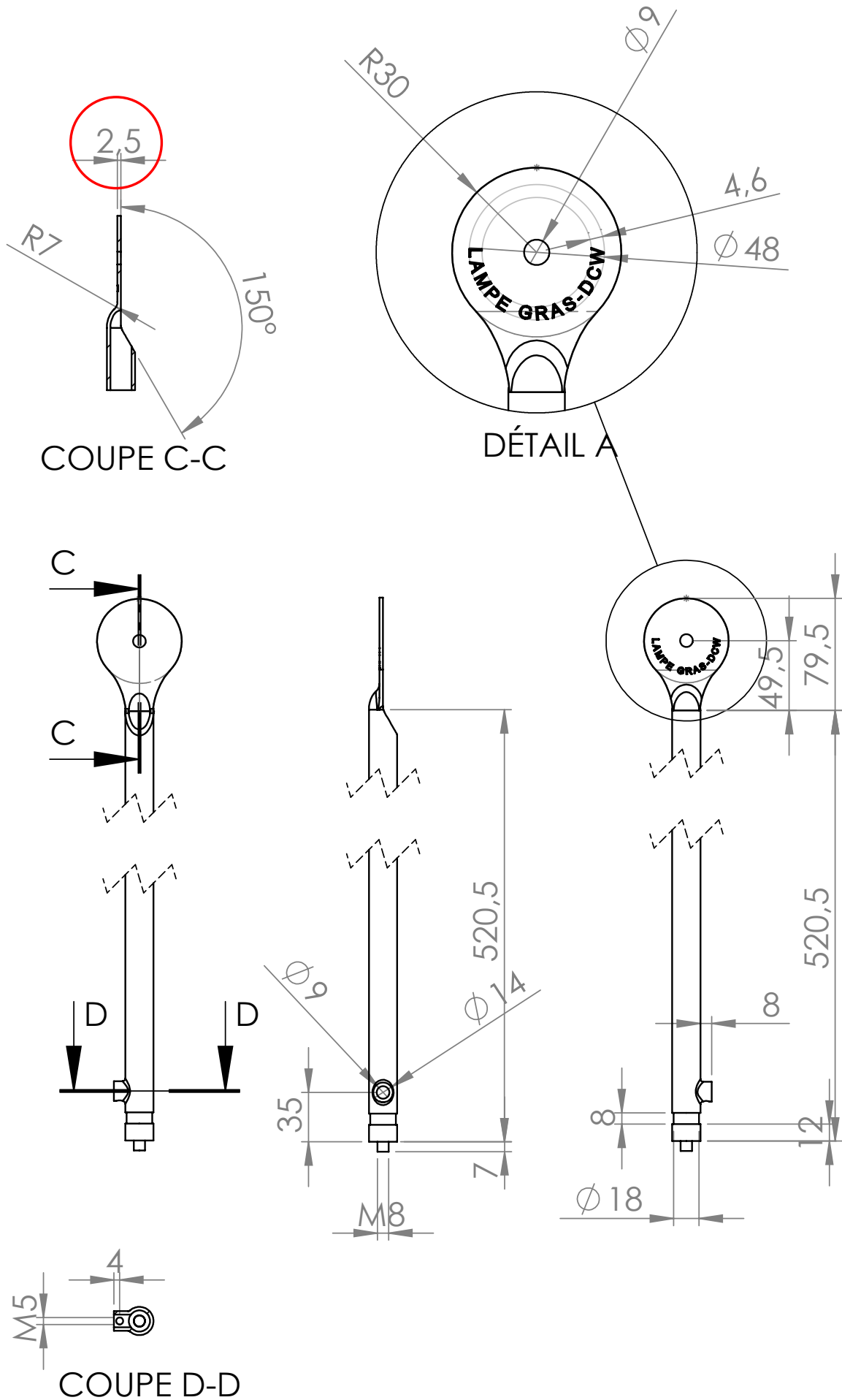
Matériaux : BLACK PLASTIC

Part : CORD GRIPP

Date :

Rev : 1

Details : E27 ; Neopren black wire



dcw.

Name : LAMP GRAS N°222 OUTDOOR XL

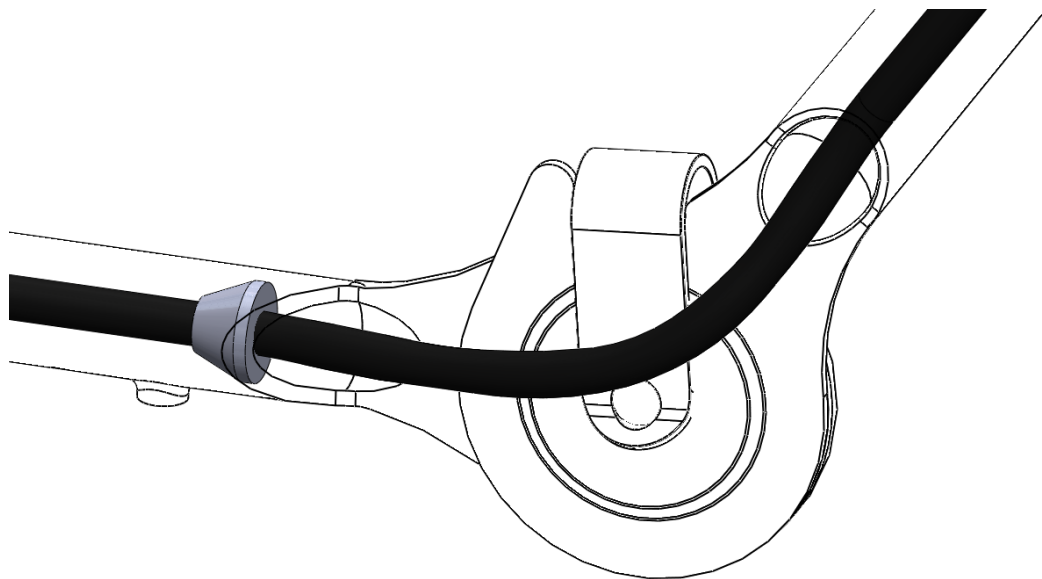
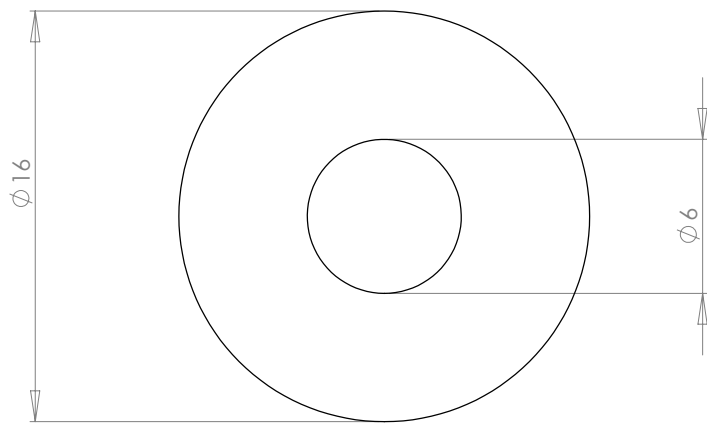
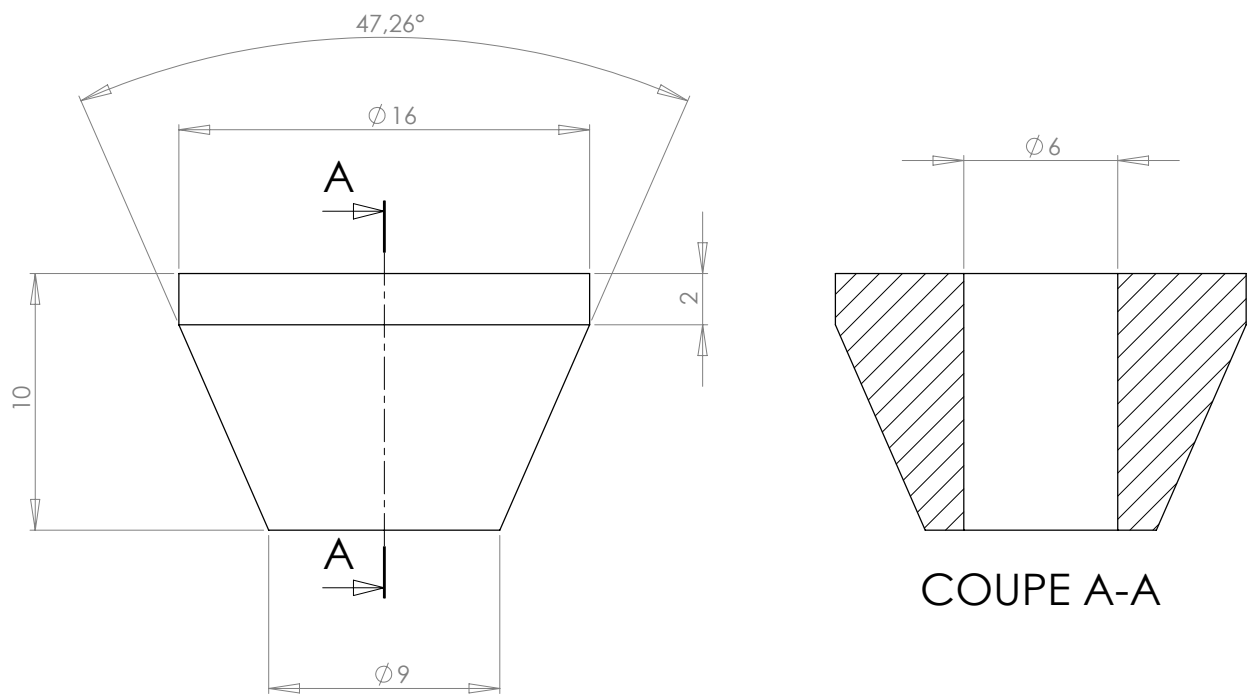
Matériaux : GALVANIZED STEEL OUTDOOR PAINTING

Part : TUBE 1

Date :

Rev : 1

Details : E27 ; Neopren black wire



dcw.

Name : LAMP GRAS XL

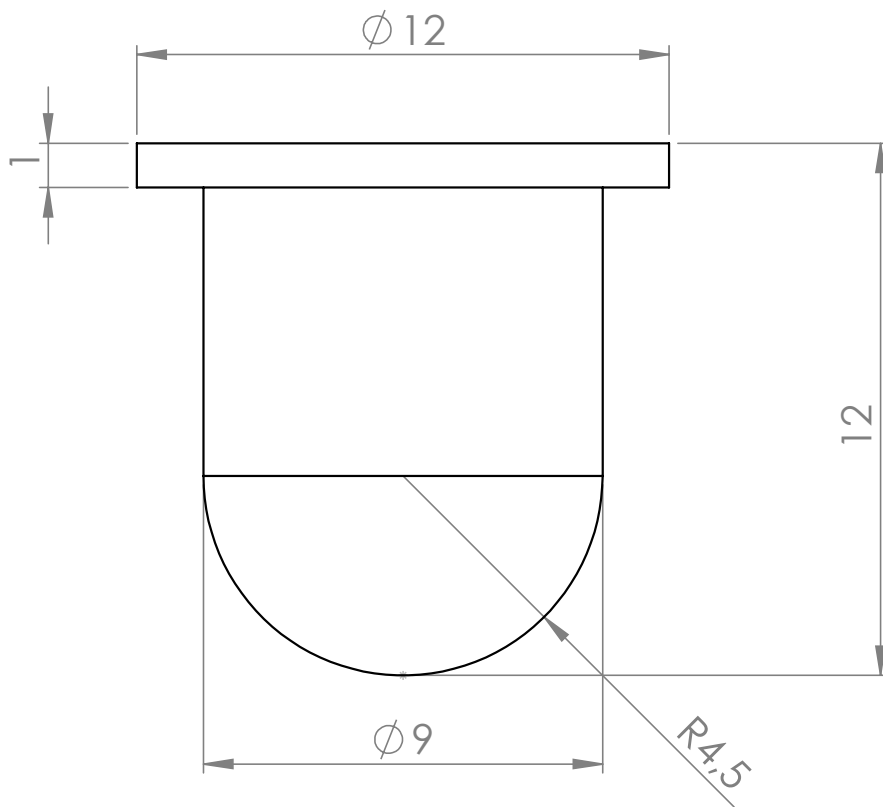
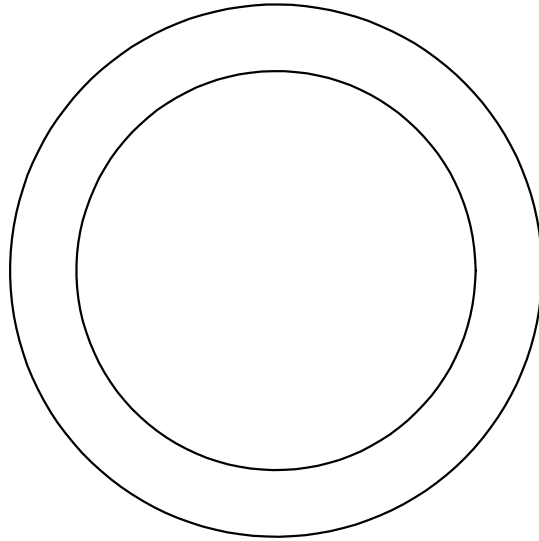
Matériaux : RUBBER

Part : TUBE JOINT

Date :

Rev : 1

Details : E27 ; Neopren black wire



dcw.

Name : LAMP GRAS XL

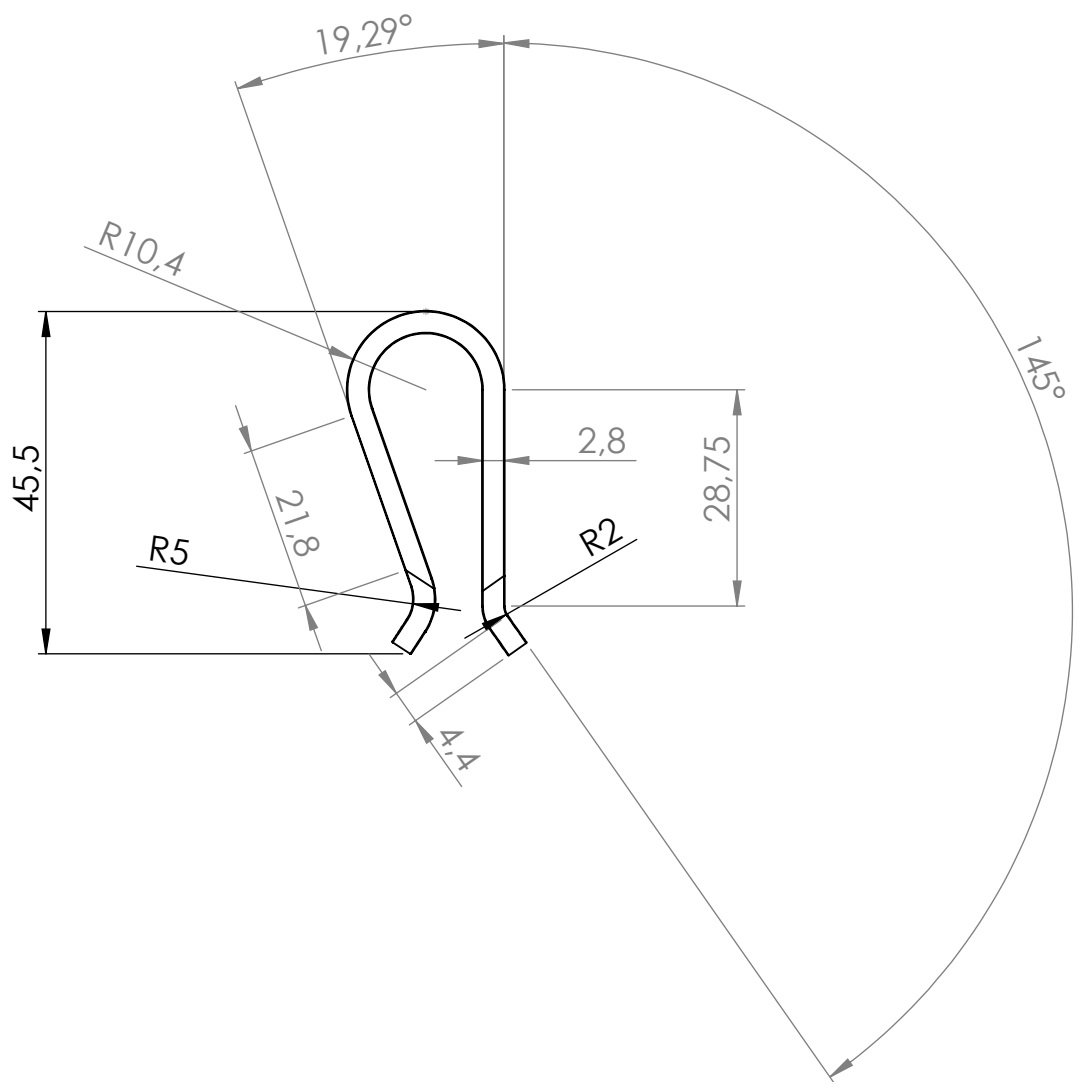
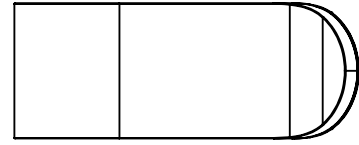
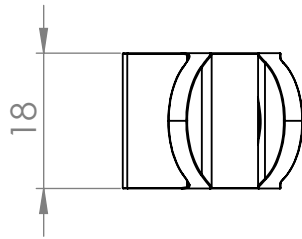
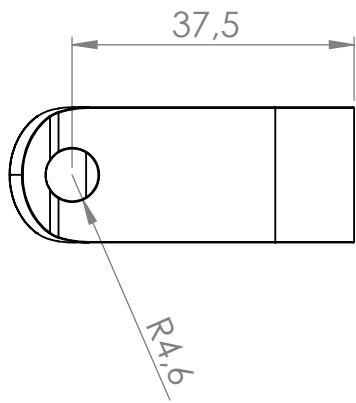
Matériaux : STAINLESS STEEL

Part : AXIS

Date :

Rev : 1

Details : E27 ; Neopren black wire



dcw.

Name : LAMP GRAS N°213 XL

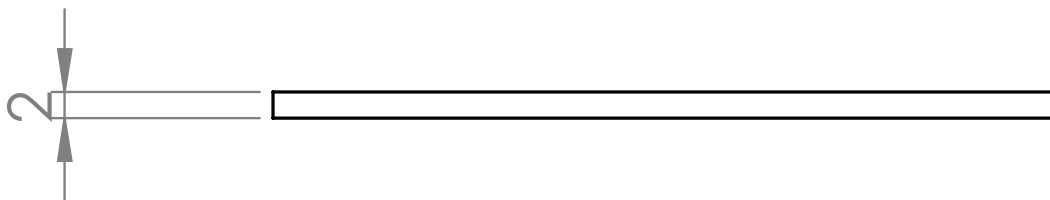
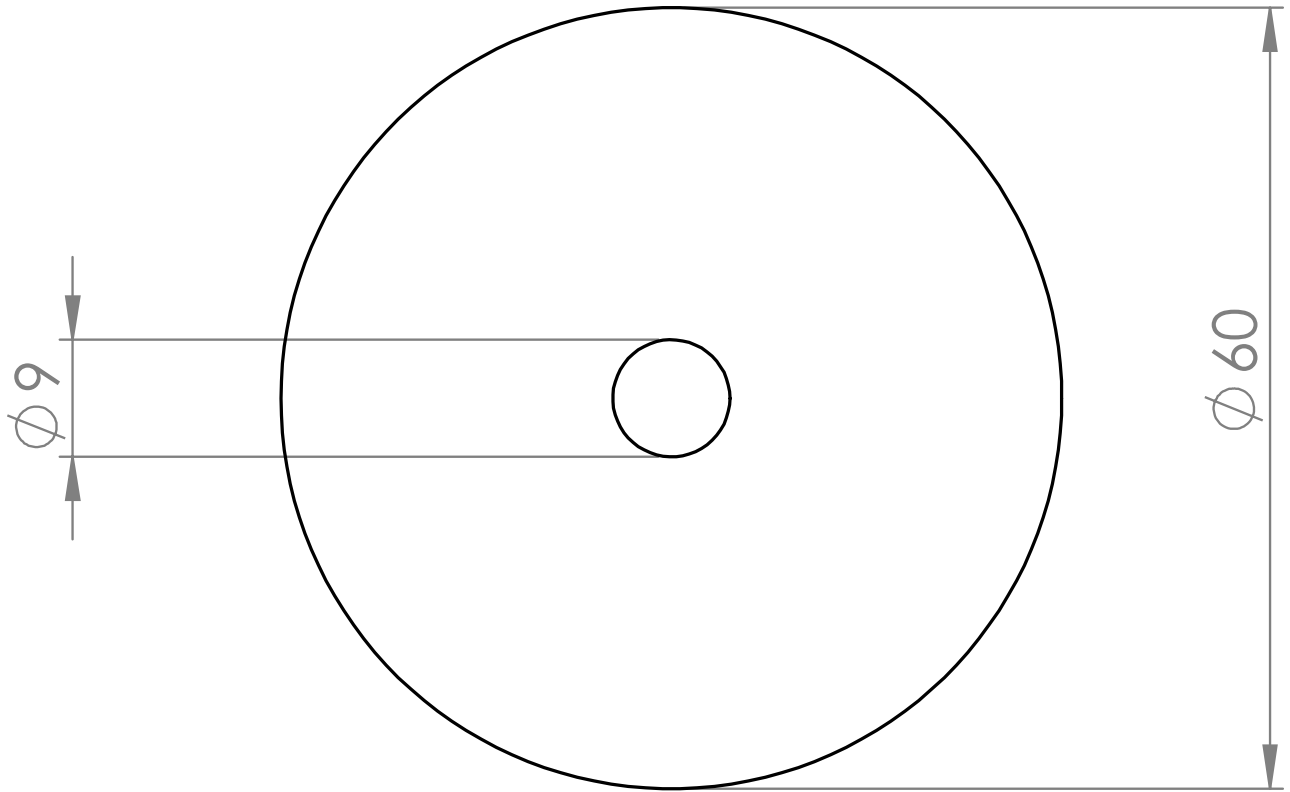
Matériaux : POLISHED STAINLESS STEEL

Part : PLIERS

Date :

Rev : 1

Details : E27 ; Neopren black wire



dcw.

Name : LAMP GRAS XL

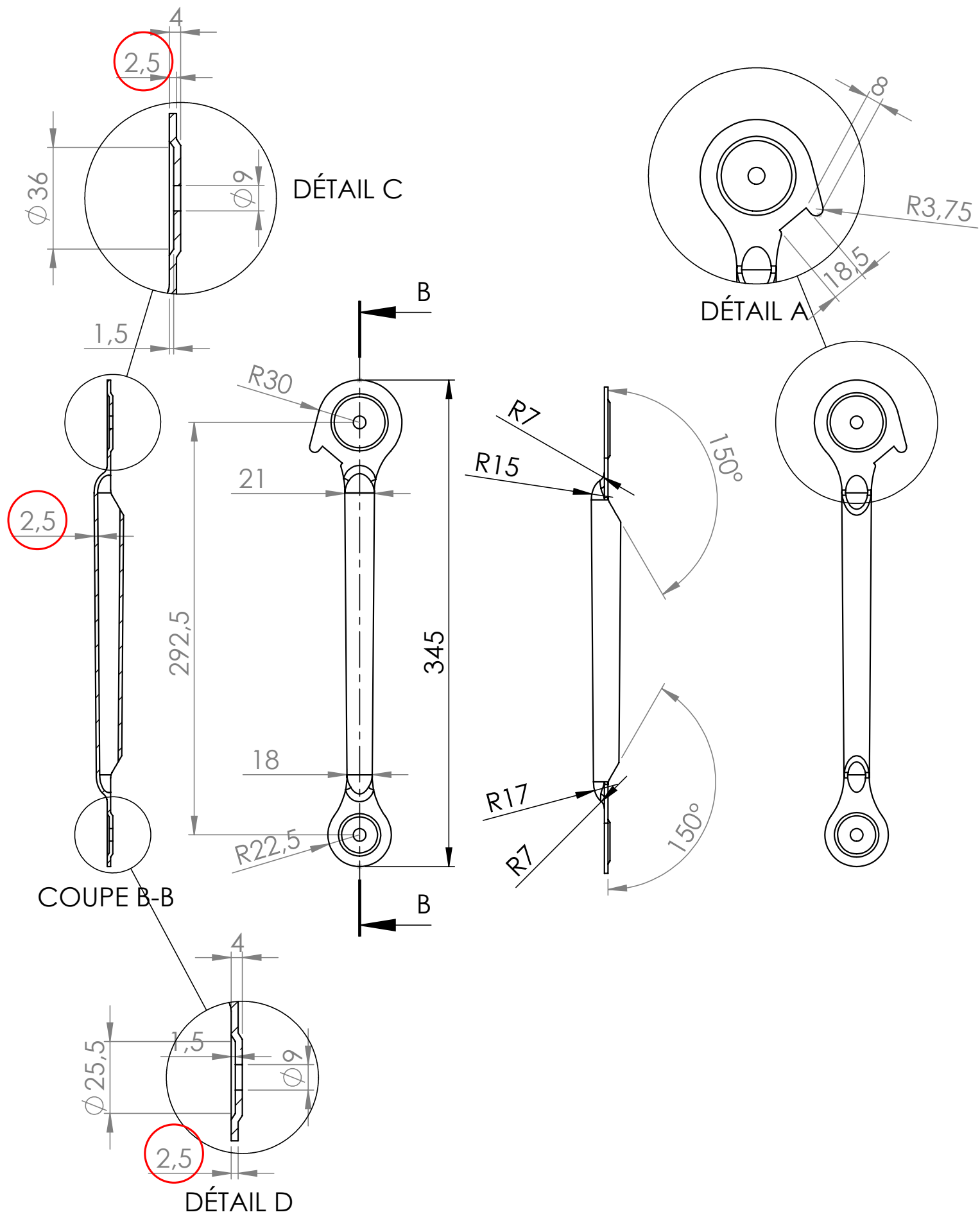
Matérials : RED PVC

Part : PLASTIC WASHER Ø60

Date :

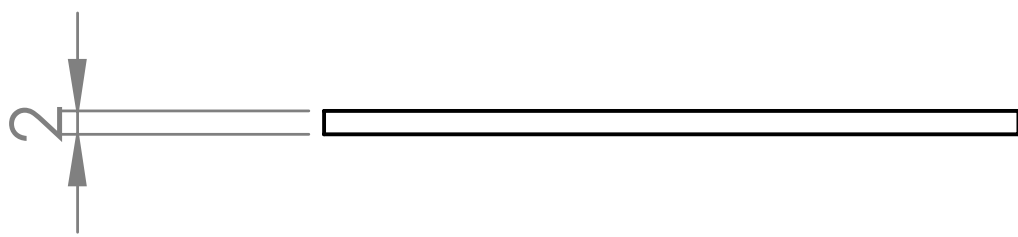
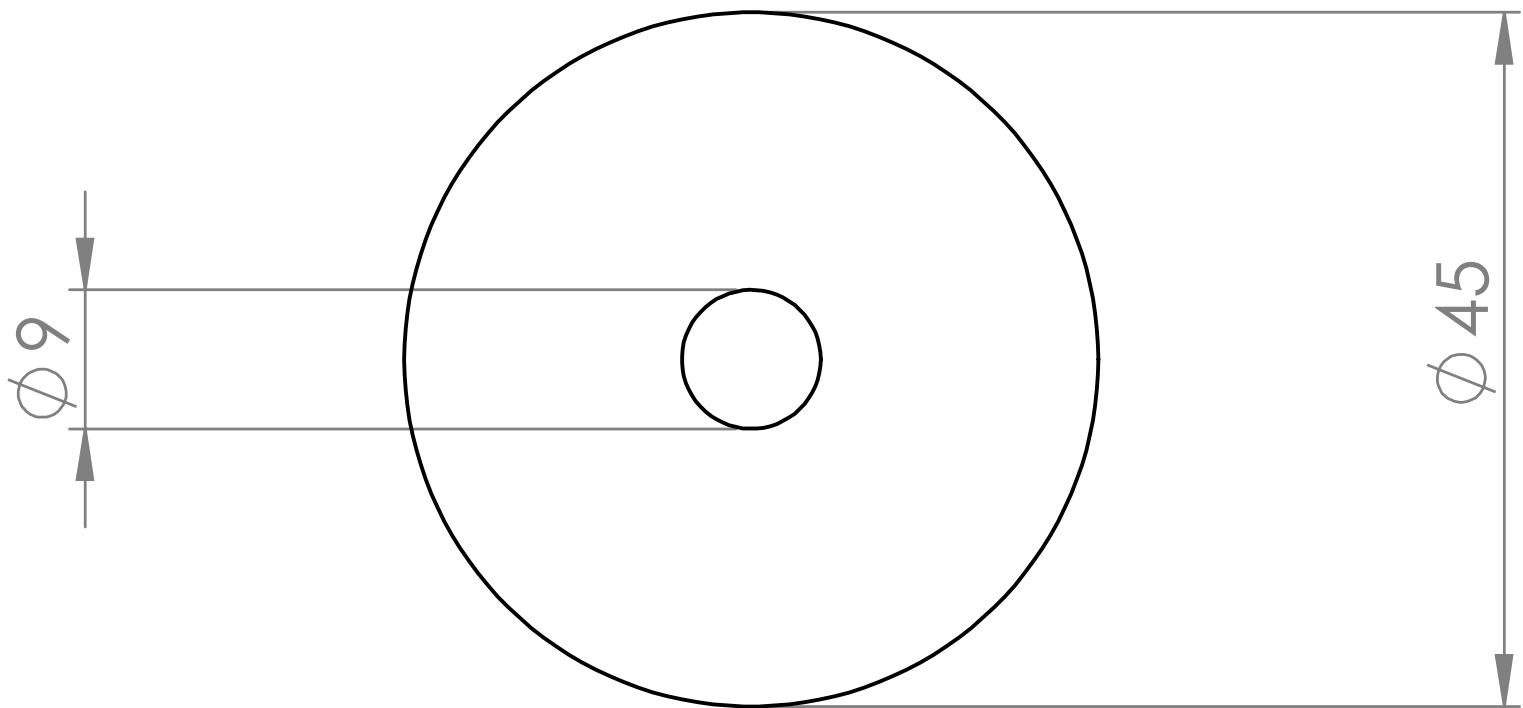
Rev : 1

Details : E27 ; Neopren black wire



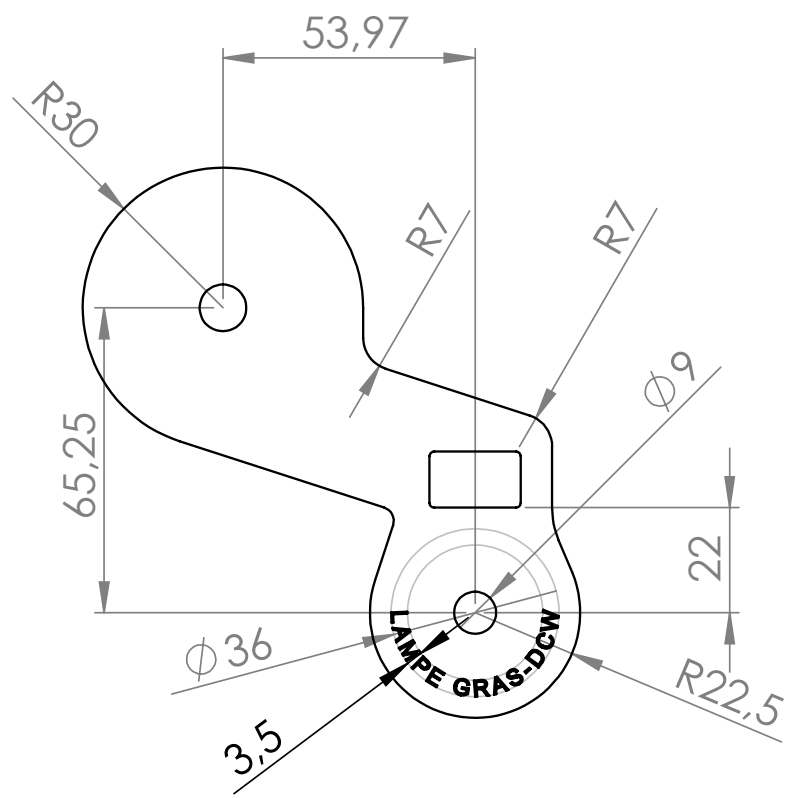
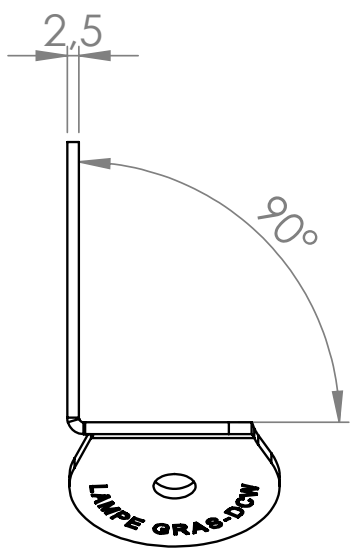
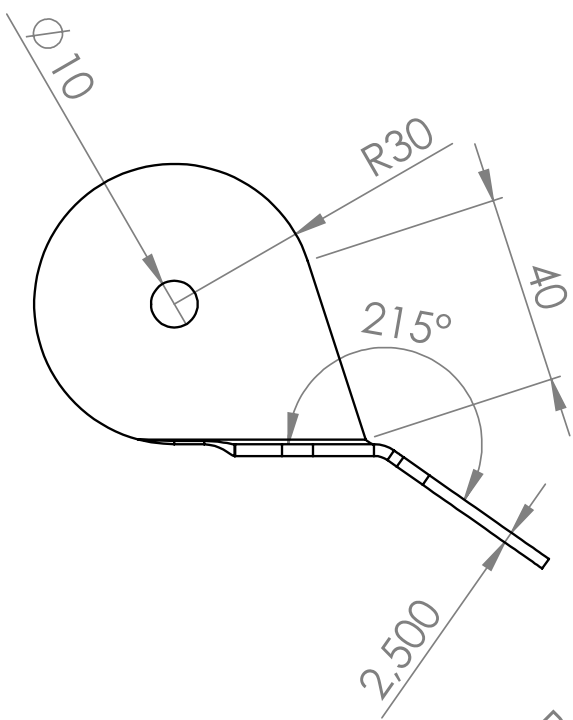
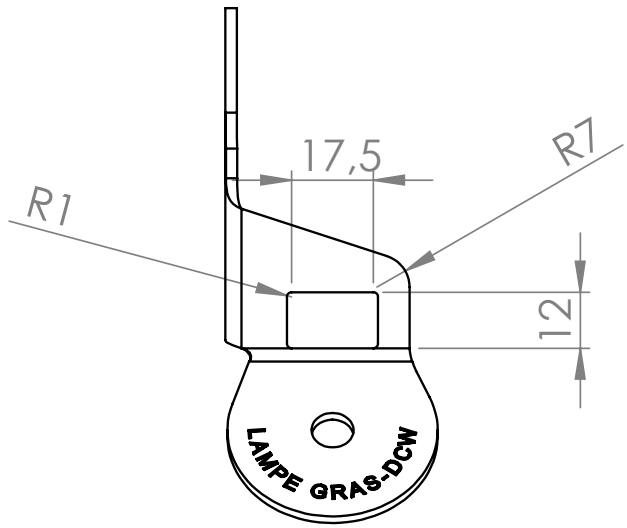
dcw.

Name : LAMP GRAS N°213 XL		Matériaux : GALVANIZED STEEL OUTDOOR PAINTING
Part : TUBE 2		
Date :	Rev : 1	Details : E27 ; Neopren black wire



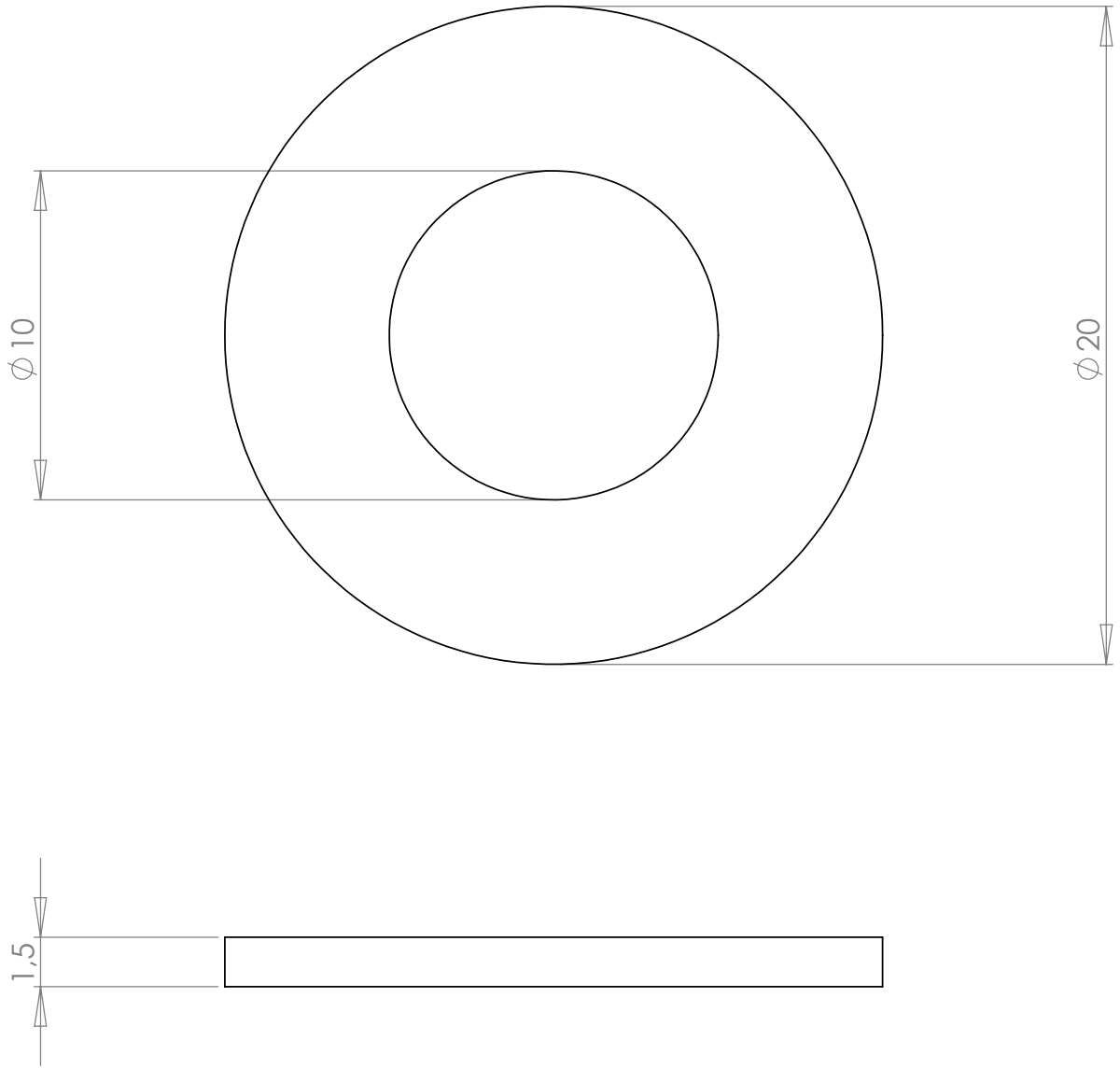
dcw.

Name : LAMP GRAS XL	Matérials : RED PVC
Part : PLASTIC WASHER Ø45	
Date :	Rev : 1
	Details : E27 ; Neopren black wire



dcw.

Name : LAMP GRAS XL		Matérials : GALVANIZED STEEL OUTDOOR PAINTING
Part : JUNCTION PIECE		
Date :	Rev : 1	Details : E27 ; Neopren black wire



dcw.

Name : LAMP GRAS XL

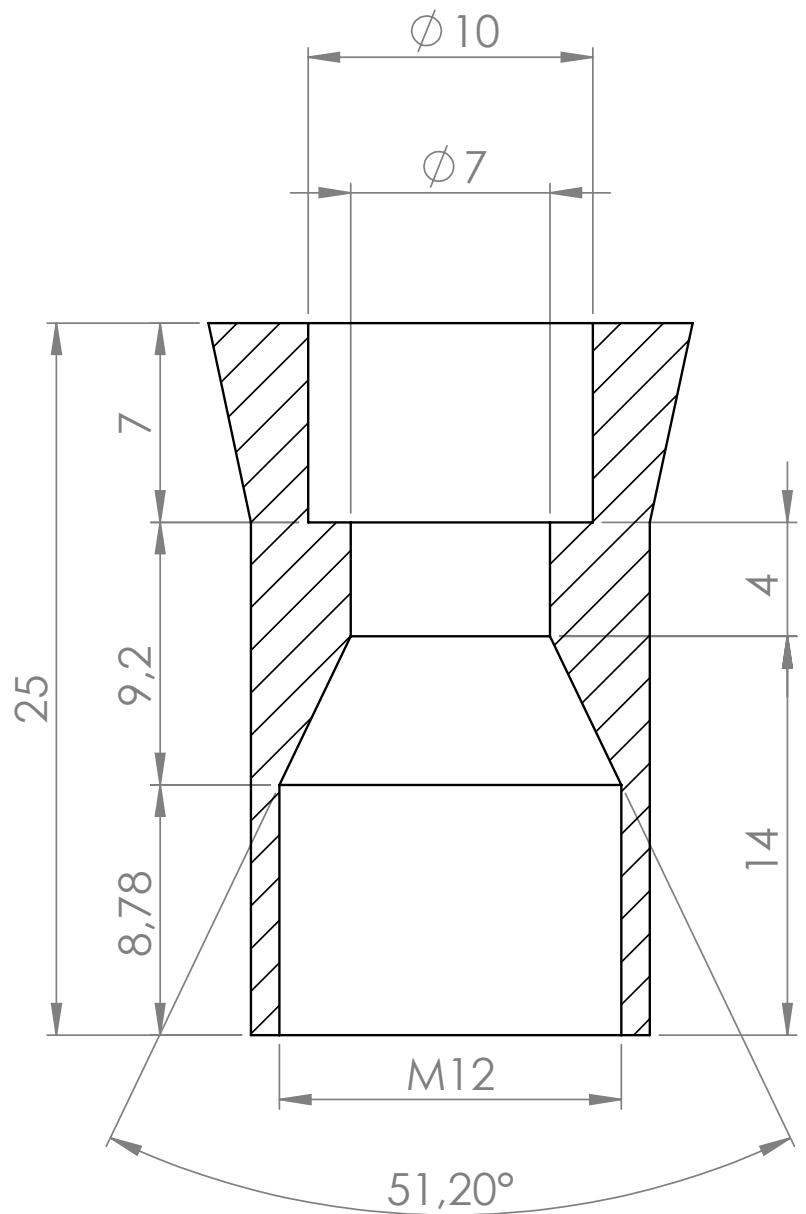
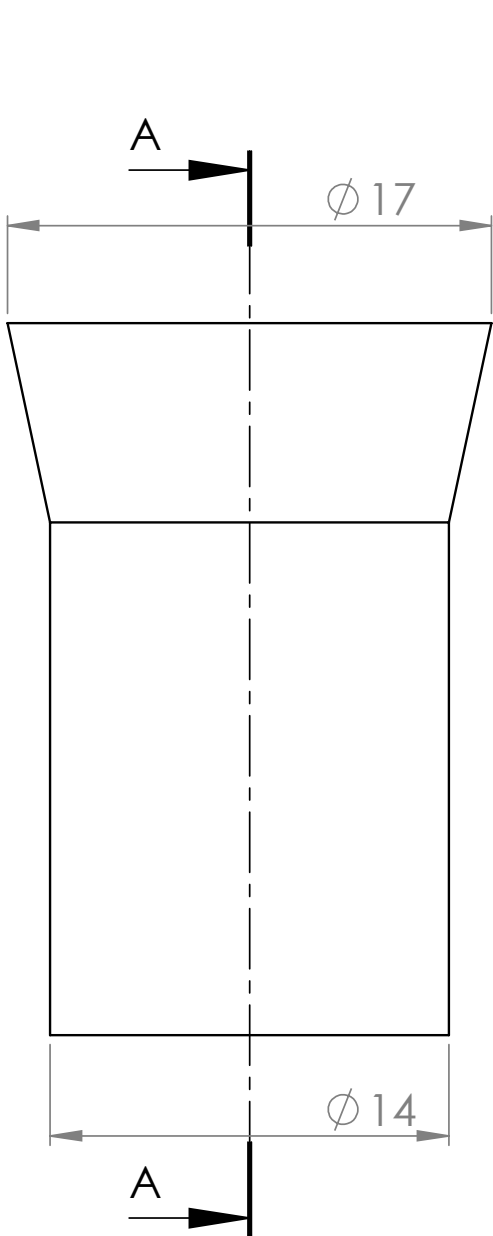
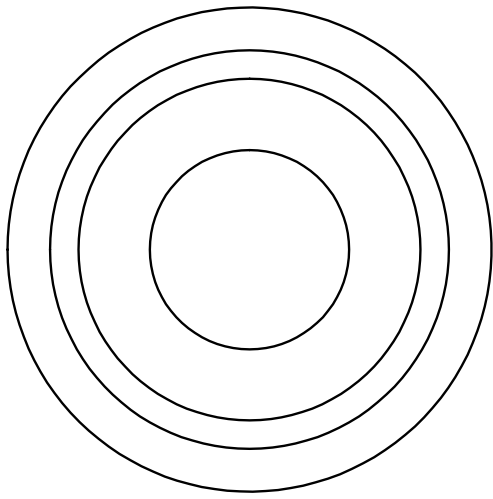
Matériaux : RUBBER

Part : SHADE JOINT 2

Date :

Rev : 1

Details : E27 ; Neopren black wire



COUPE A-A

dcw.

Name : LAMP GRAS XL

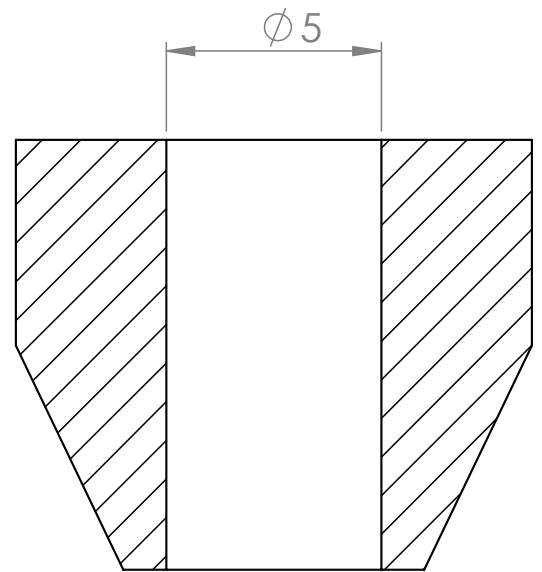
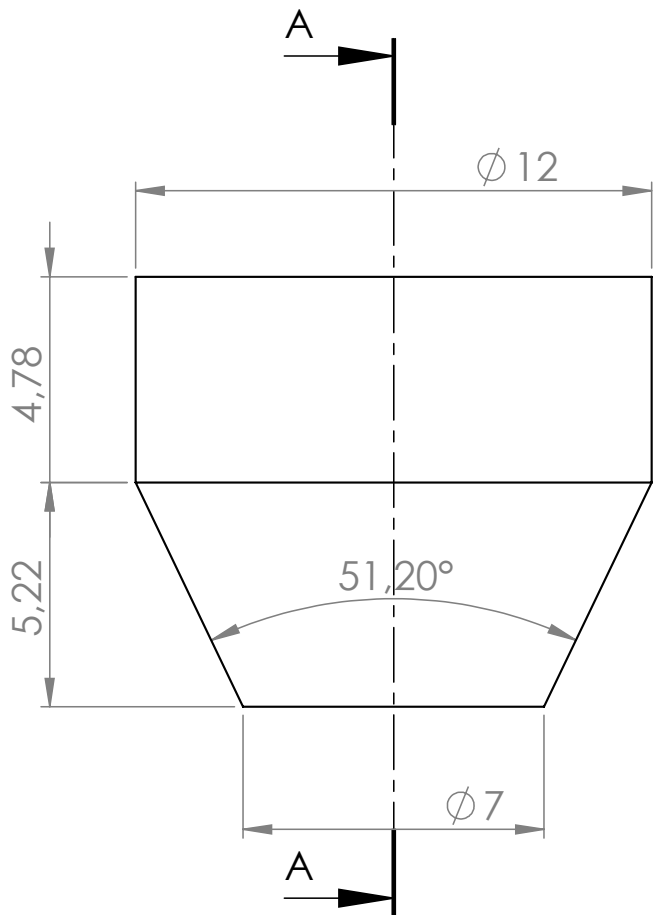
Matériaux : ALUMINIUM

Part : FIXATION 2

Date :

Rev : 1

Details : E27 ; Neopren black wire



COUPE A-A

dcw.

Name : LAMP GRAS XL

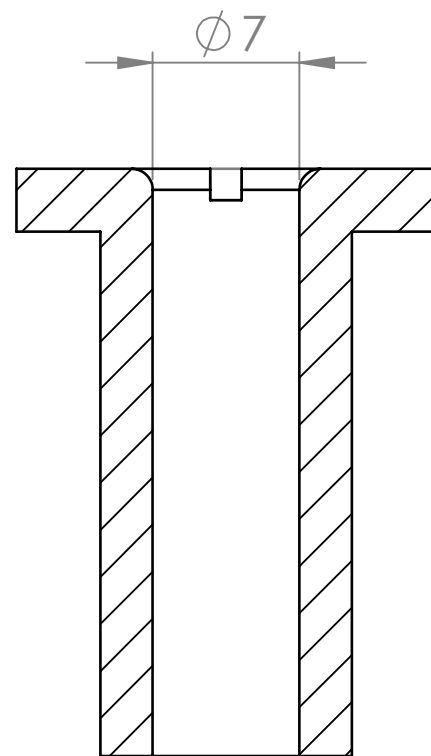
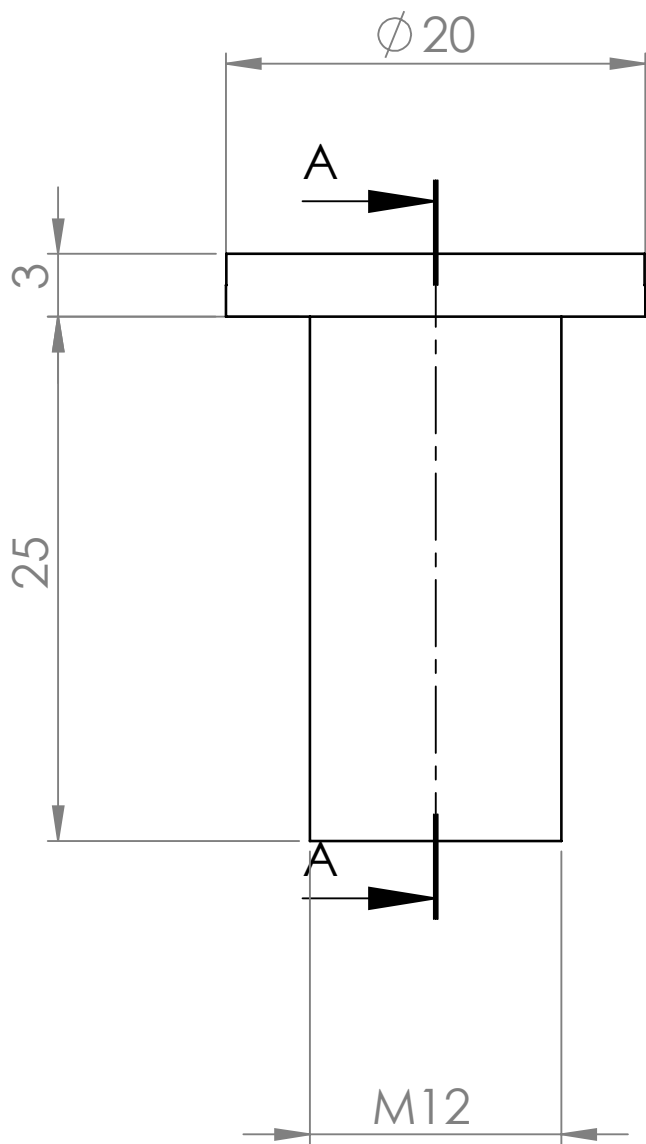
Matériaux : RUBBER

Part : JOINT FIXATION

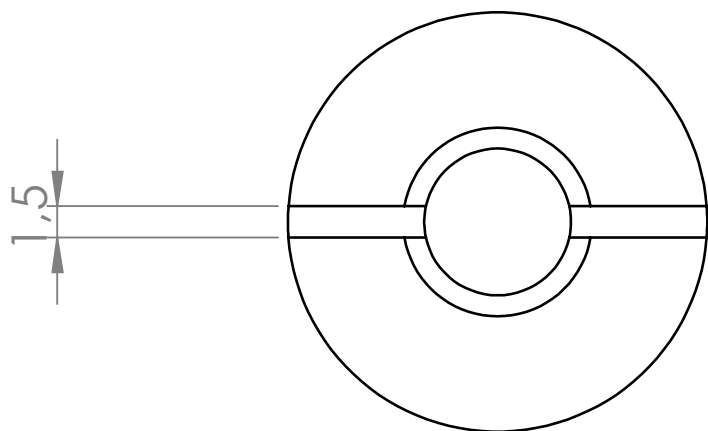
Date :

Rev : 1

Details : E27 ; Neopren black wire



COUPE A-A



dcw.

Name : LAMP GRAS XL

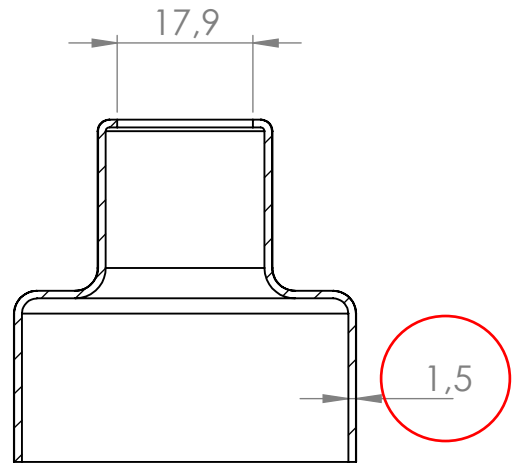
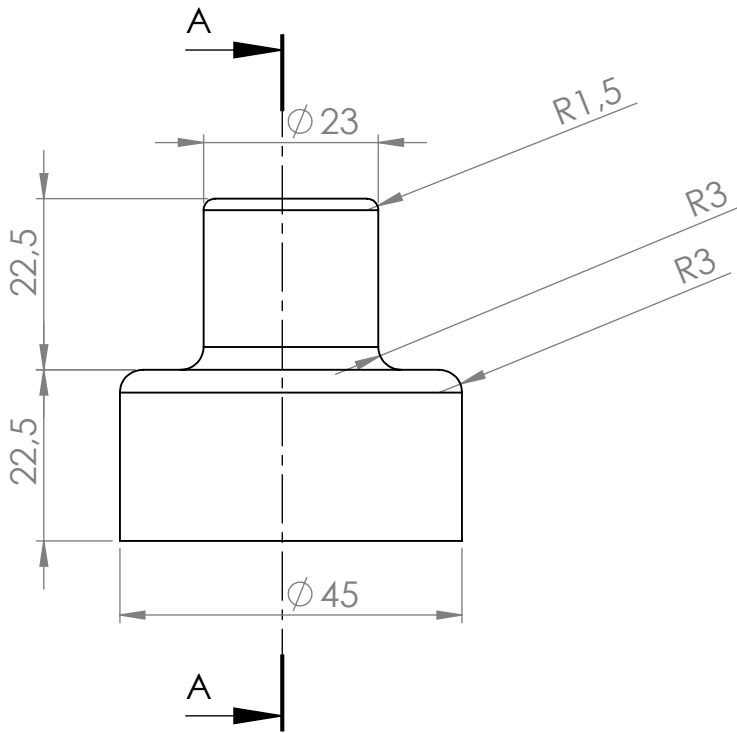
Matériaux : POLISHED STAINLESS STEEL

Part : FIXATION PIECE

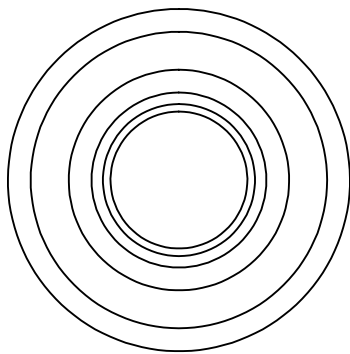
Date :

Rev : 1

Details : E27 ; Neopren black wire



COUPE A-A



dcw.

Name : LAMP GRAS XL

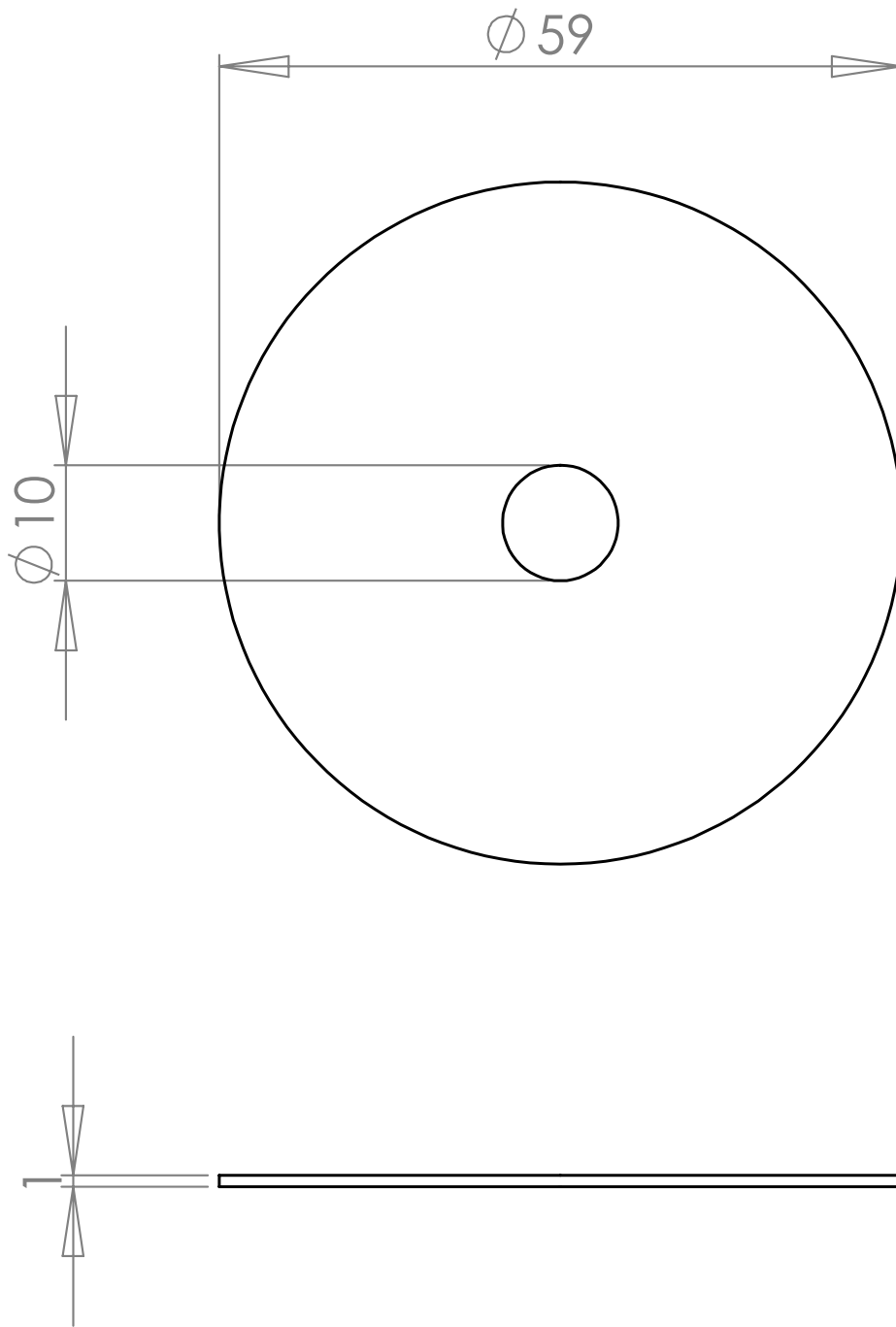
Matériaux : ALUMINIUM OUTDOOR PAINTING

Part : COVERING PIECE

Date :

Rev : 1

Details : E27 ; Neopren black wire



dcw.

Name : LAMP GRAS XL

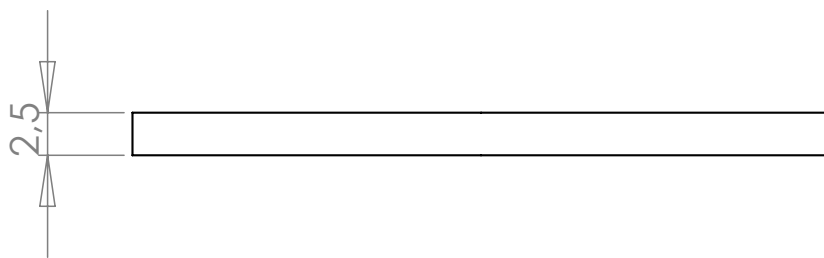
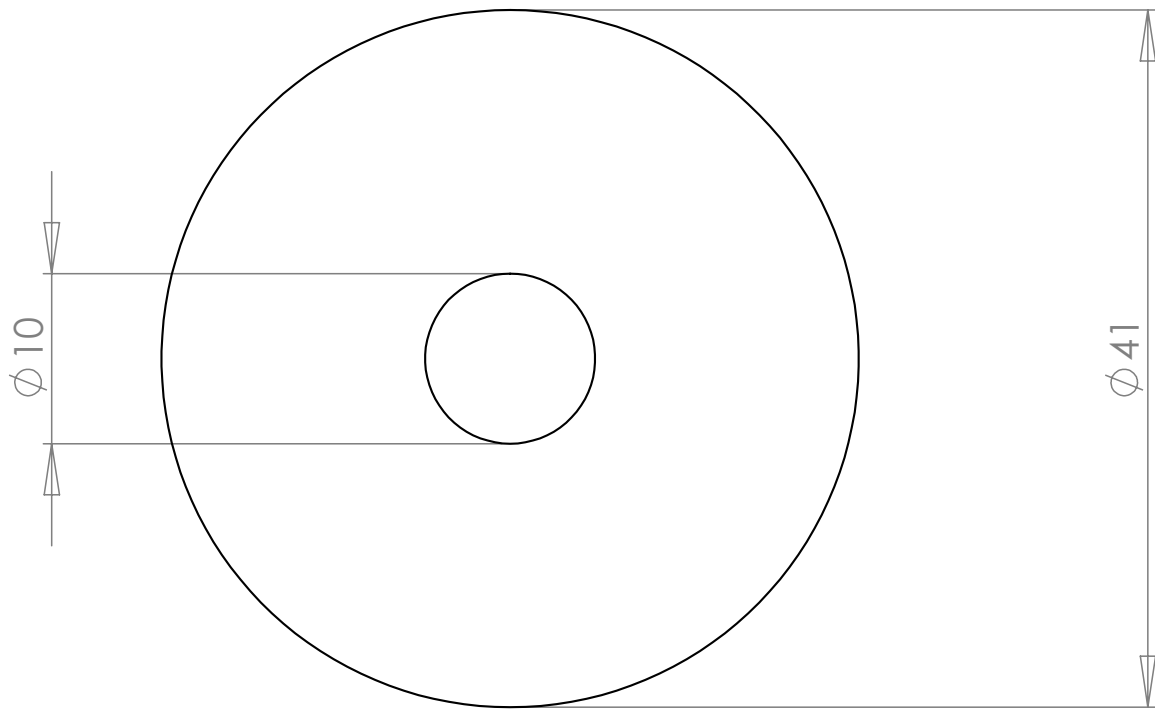
Matériaux : RUBBER

Part : SHADE JOINT

Date :

Rev : 1

Details : E27 ; Neopren black wire



dcw.

Name : LAMP GRAS XL

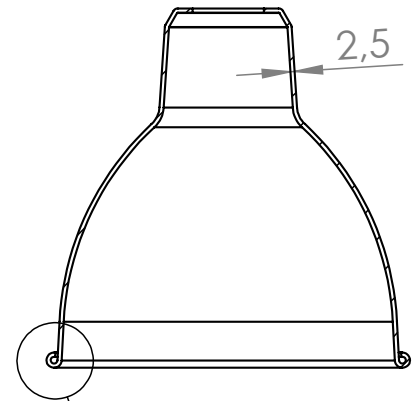
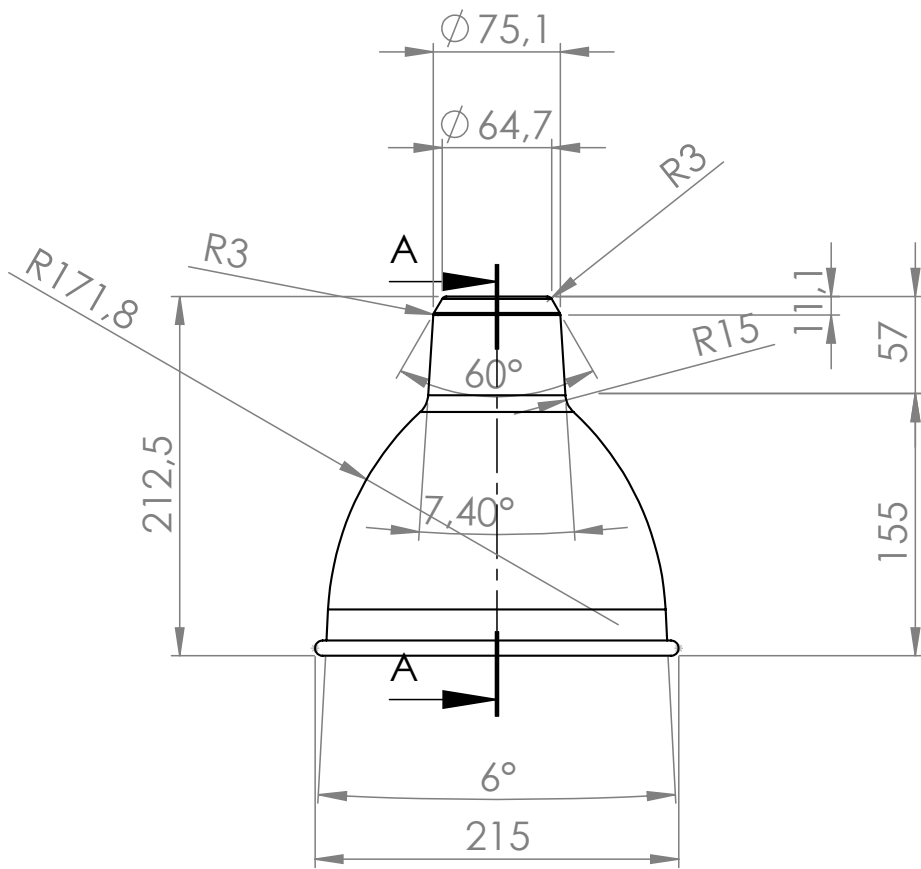
Matérials : WHITE PAINTED ALUMINIUM

Part : CENTRING WASHER

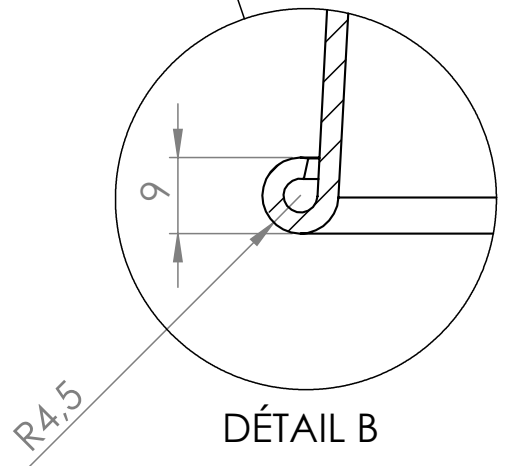
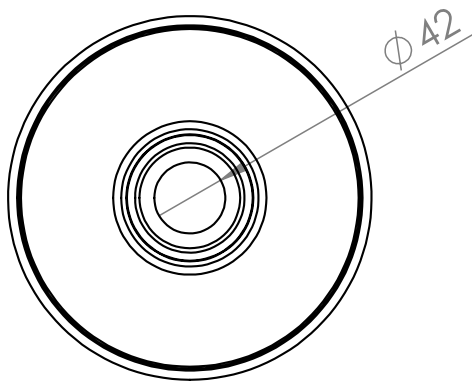
Date :

Rev : 1

Details : E27 ; Neopren black wire



COUPE A-A



DÉTAIL B

dcw.

Name : LAMP GRAS XL

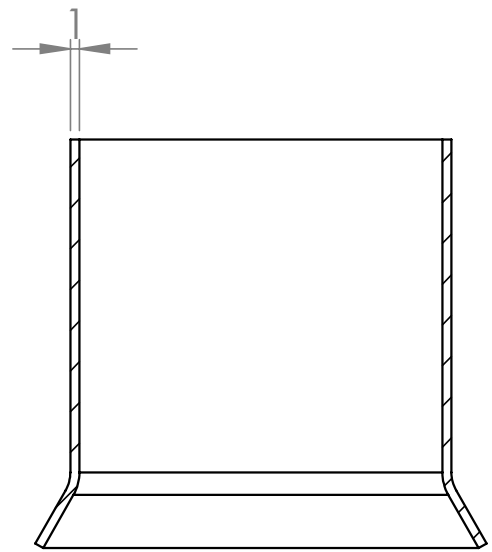
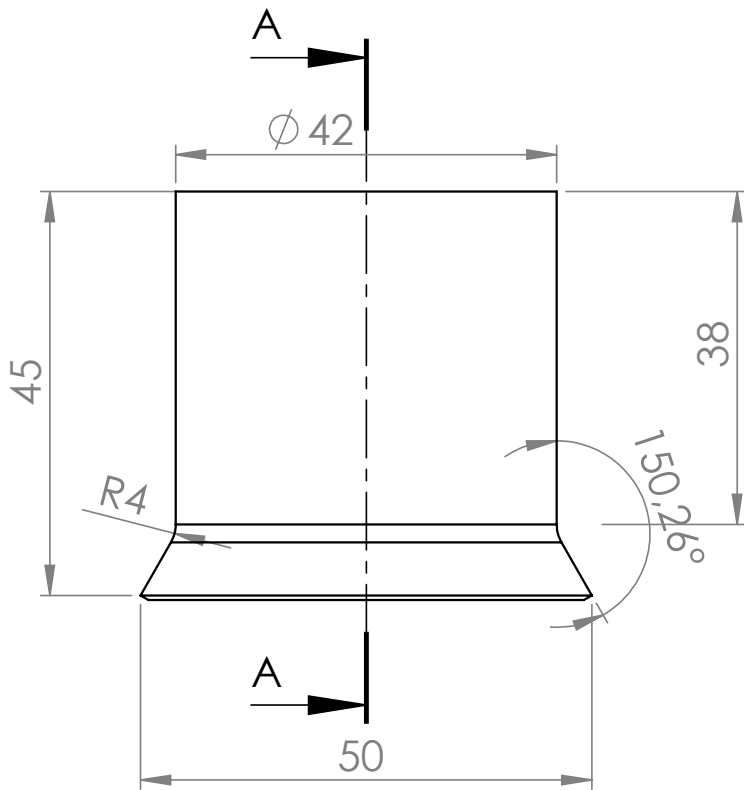
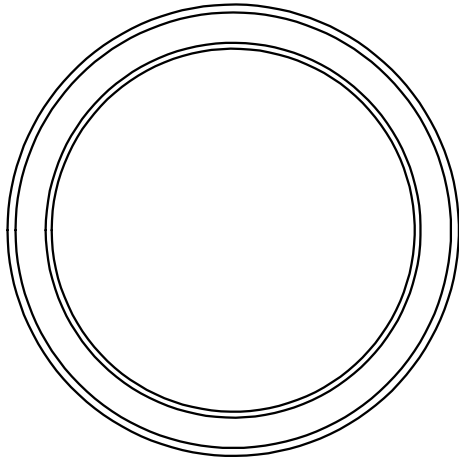
Matériaux : ALUMINIUM OUTDOOR PAINTING

Part : ROUND SHADE

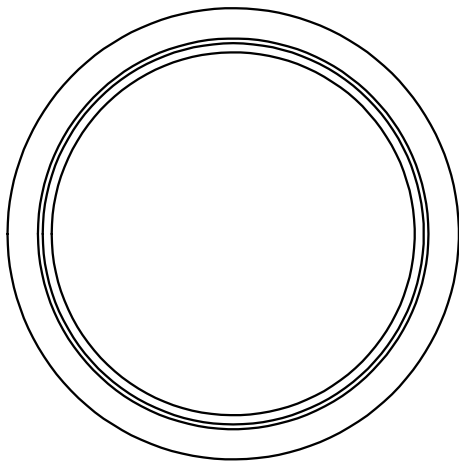
Date :

Rev : 1

Details : E27 ; Neopren black wire



COUPE A-A



dcw.

Name : LAMP GRAS XL

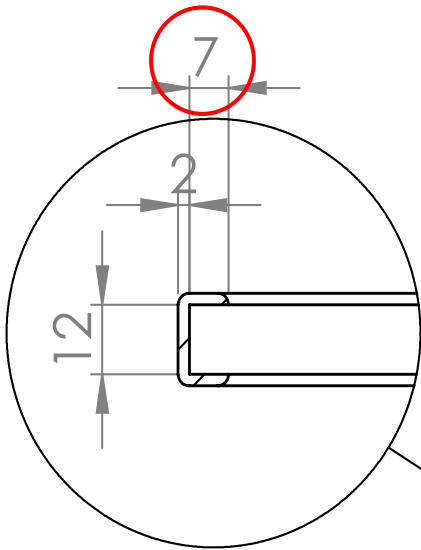
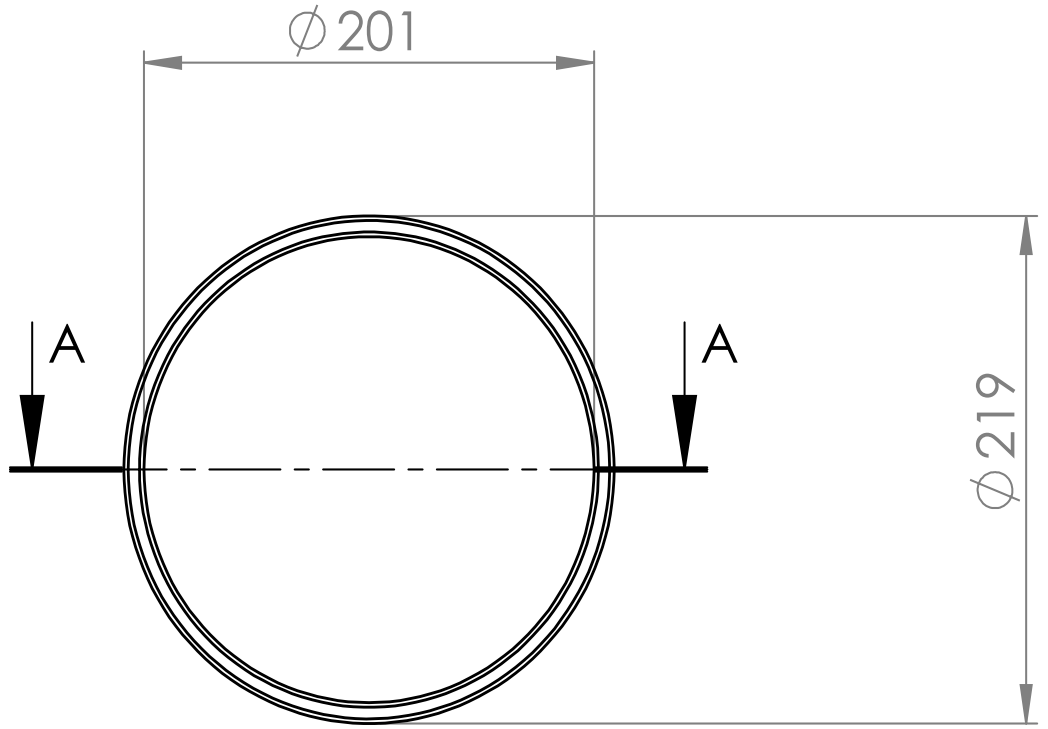
Matériaux : CHROMED STEEL

Part : BULBHOLDER SPACER

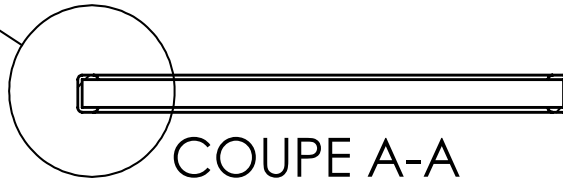
Date :

Rev : 1

Details : E27 ; Neopren black wire



DÉTAIL B



COUPE A-A

dcw.

Name : LAMP GRAS XL

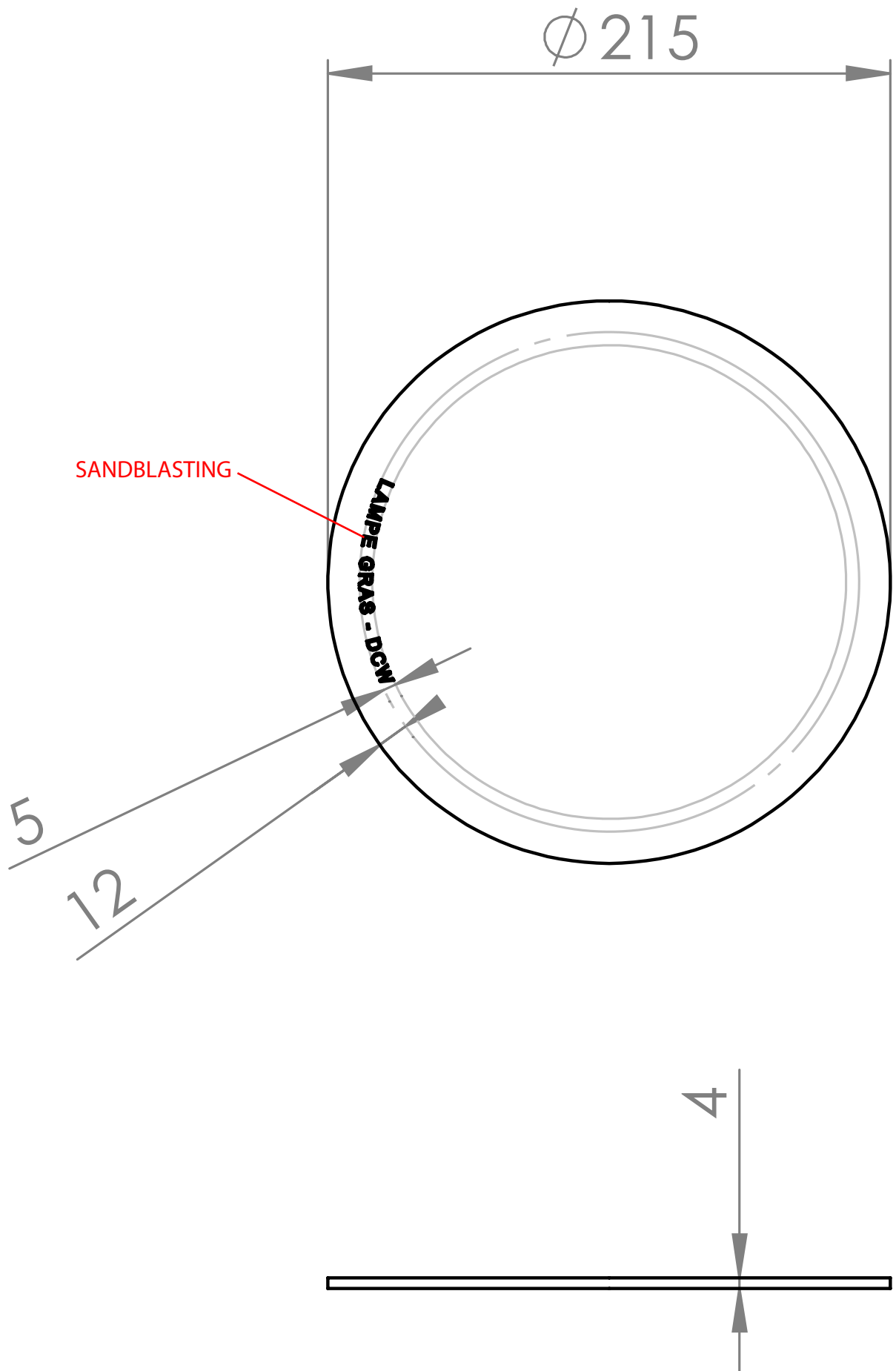
Matériaux : RUBBER

Part : ROUND STRAPPING JOINT

Date :

Rev : 1

Details : E27 ; Neopren black wire



dcw.

Name : LAMP GRAS XL

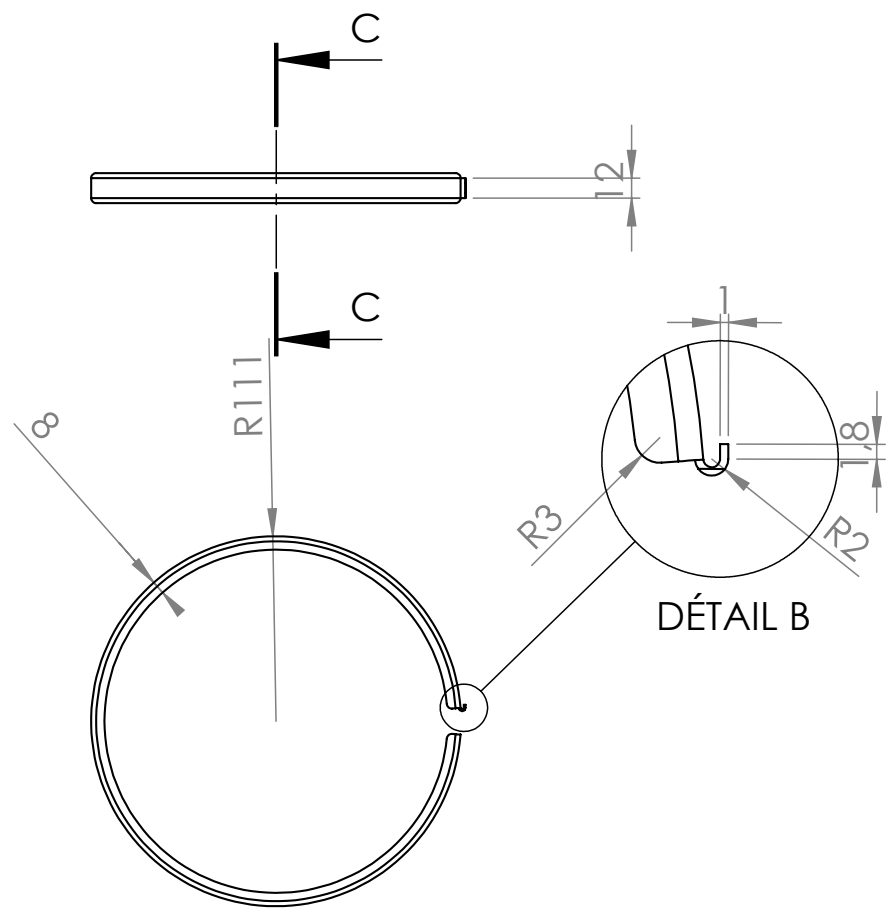
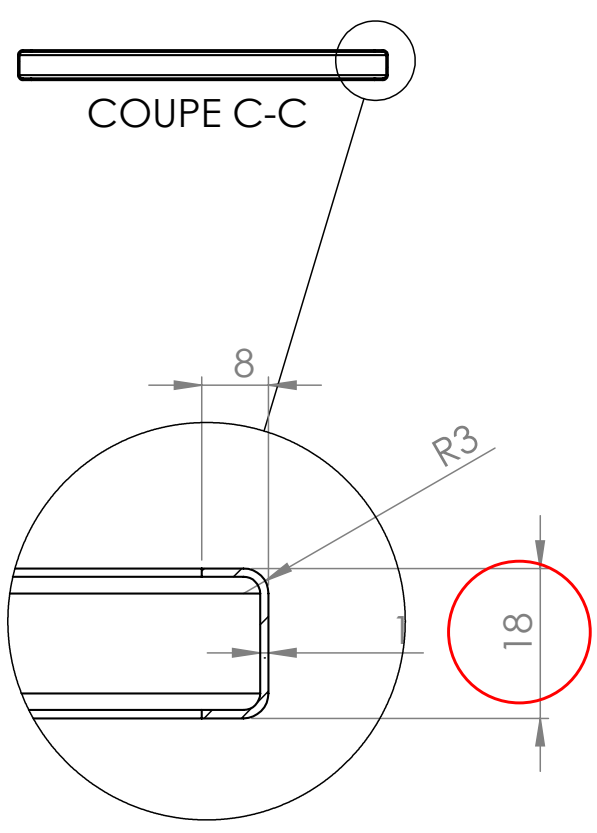
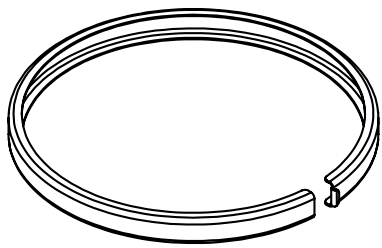
Matériaux : BOROSILICATE GLASS

Part : GLASS ROUNDSCREEN

Date :

Rev : 1

Details : E27 ; Neopren black wire



dcw.

Name : LAMP GRAS XL

Matériaux : GALVANIZED STEEL OUTDOOR PAINTING

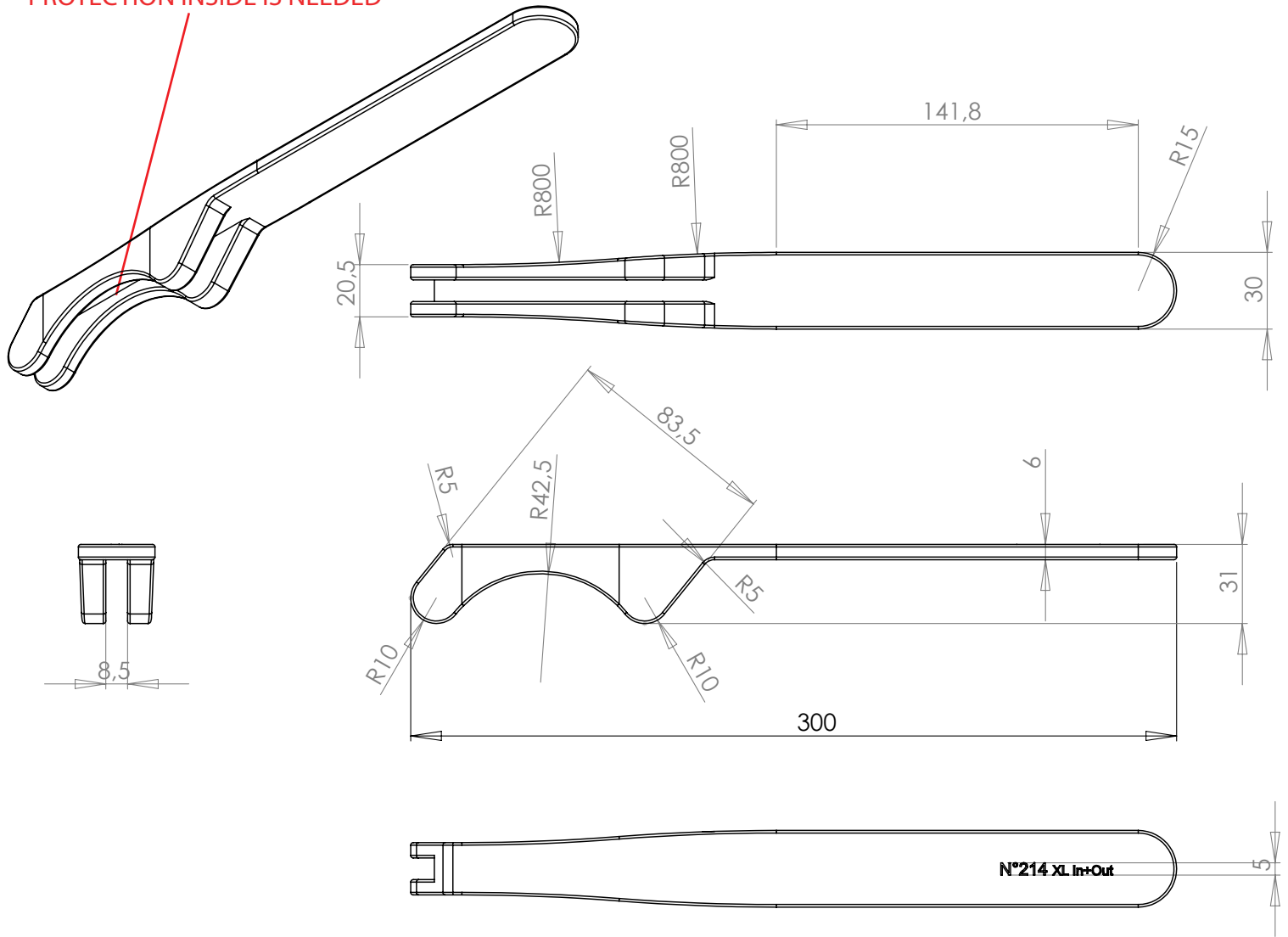
Part : ROUND STRAPPING

Date :

Rev : 1

Details : E27 ; Neopren black wire

PROTECTION INSIDE IS NEEDED



dcw.

Name : LAMPE GRAS N°214/222 XL

Part : TOOL

Date :

Rev : 1

Materials :

Details :